

113°7'30"W

113°7'0"W

113°6'30"W

113°6'0"W

46°1'30"N

**Twelve Mile
MT-BDF-006412**

Infrared Map - for 9/22/2021

Interpreted Acres: 21

IRIN: Trish Boll(t)

Imagery Acquired: 9/21/2021 @ 2200 MDT

UTM Zone 12N NAD83



46°1'0"N

46°1'0"N

46°0'30"N

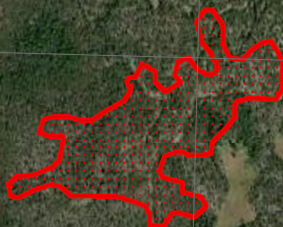
46°0'30"N

46°0'0"N

46°0'0"N

45°59'30"N

45°59'30"N



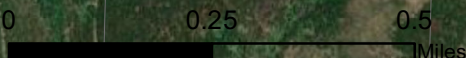
Possible IR Heat Source



IR Heat Perimeter



IR Scattered Heat



Source: Esri, Maxar, GeoEye, Earthstar Geographics, CNES/Airbus DS, USDA, USGS, AeroGRID, IGN, and the GIS User Community

113°7'30"W

113°7'0"W

113°6'30"W

113°6'0"W

113°5'30"W