

# Incident Action Plan



**Day Operational Period**  
Saturday 08/14/2021 0600 - 2100

**Night Operational Period**  
Saturday 08/14/2021 1600 - Sunday 08/15/2021 0800

West Lolo Complex  
MT-LNF-000893  
P1N5AN (0116)


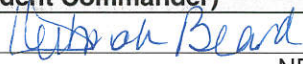
[2021.westlolo.finance@firenet.gov](mailto:2021.westlolo.finance@firenet.gov)

Check-in



Maps



|  |   |  |                          |
|--|---|--|--------------------------|
| <b>INCIDENT OBJECTIVES</b>   | 1. Incident Name<br><b>West Lolo Complex</b>  | 2. Date Prepared<br>8/13/2021  | 3. Time Prepared<br>1500 |
|  | <b>4. Operational Period</b><br>DAY/NIGHT SHIFT Saturday August 14, 2021 0600 - Sunday August 15, 2021 0800 |  |                          |
| <b>5. Leader's Intent</b>  |   |  |                          |
| <ul style="list-style-type: none"> <li>Protect the identified values at risk utilizing full suppression strategies identified by Agency Administrators in alignment with their prioritization of specific values. Risk management tools will be used to evaluate tactics in order to provide for firefighter and public safety while implementing actions that have a high probability of success.</li> <li>The highest priority on this incident is to protect the safety of fire personnel and to protect human life followed by the protection of structures. Ensure LCES is known and understood by everyone, and contingencies and trigger points for disengagement are developed and followed.</li> <li>Maintain a positive and inclusive workplace where all employees are valued and treated with respect.</li> </ul>  |   |  |                          |
| <b>6. Incident Objectives</b>  |   |  |                          |
| <ul style="list-style-type: none"> <li>Address the safety of firefighters, aviation and public through clear communication. Ensure an understanding of strategies and tactics, including a clearly defined and obtainable end state, in order to facilitate sound risk mitigation decision making.</li> <li>Infrastructure Values at Risk: Minimize fire threat and impacts to local communities, the Ashley Creek Municipal water supply, highway corridors, recreation improvements, commercial timberlands, BPA and Northwestern Energy transmission lines, Phillips 66 facilities, communication and SNOTEL sites, Lolo Visitor Center, commercial hot springs, private property, and private structures. This will be achieved by coordinating suppression actions with cooperators responsible for structure protection, implementing indirect primary and contingency lines and strategic aerial ignition operations.</li> <li>Natural and Cultural Resource Values at Risk: Weigh potential suppression actions in consideration of heritage resources, waterways and riparian areas, and bull trout and anadromous fish habitat in order to minimize fire effects and undesirable suppression related effects to these values.</li> <li>Continue to develop and implement the long-term plan for fires in the complex that incorporate management actions in alignment with the protection of identified values, based on current and expected weather and fire behavior. The long-term plan will incorporate primary, alternate, contingency, and emergency plans identifying opportunities for both direct and indirect suppression actions.</li> <li>Maintain and strengthen relationships with the Lolo National Forest; MT DNRC; Sanders, Emergency Managers, and VFD's; community leaders; cooperators; local government and agencies; and private landowners utilizing the most effective platforms available.</li> <li>Provide timely, accurate, and consistent incident information through the press, community meetings, trap lines, briefings and social media. Incident information shall be coordinated between the team and the Forest Service Line Officers, MT DNRC Unit Manager, and the Sanders, Missoula, Clearwater, and Idaho County Sheriff Offices.</li> <li>Continue to monitor costs and implement cost effective methods for accomplishing operational objectives.</li> <li>Ensure adherence to current guidance regarding COVID-19 to provide for the health and safety of all incident personnel by implementing the module-of-one concept, social distancing, and masking up as appropriate.</li> </ul> |   |  |                          |
| <b>7. Attachments (X - if attached)</b>  |   |  |                          |
| <input checked="" type="checkbox"/> Organization List - ICS 203  | <input checked="" type="checkbox"/> Medical Plan - ICS 206  | <input type="checkbox"/>   | <input type="checkbox"/> |
| <input checked="" type="checkbox"/> Division Assignment Lists - ICS 204  | <input checked="" type="checkbox"/> Unit Log 214  | <input type="checkbox"/>   | <input type="checkbox"/> |
|  | <input checked="" type="checkbox"/> WF206 8 Line  | <input type="checkbox"/>   | <input type="checkbox"/> |
| <b>8. Prepared By (Planning Section Chief)</b>   |   | <b>9. Approved By (Incident Commander)</b>   |                          |
| Kelly Russell, PSC2 (t)   |   | Debbie Beard, IC  |                          |
| ICS 202  |   | NFES 1326  |                          |

| ORGANIZATION ASSIGNMENT LIST                                  |   |                          |      |
|---|---|--------------------------|------|
| 1. Incident Name  |   | <b>West Lolo Complex</b> |      |
| 2. Date Prepared  | 8/13/2021   | 3. Time Prepared         | 1800 |
| 4. Operational Period   |   |                          |      |
| Saturday August 14, 2021 06:00 – Sunday August 15, 2021 08:00 |   |                          |      |
| <b>Incident Commander and Staff</b>                           |   |                          |      |
| Incident Commander  | Debbie Beard  |                          |      |
| Safety Officer  | Paul Churchill<br>Richard Kelley<br>Shawn Duggar<br>Larry Holsomback<br>Brandon Hughes (t)<br>Jeffery Henderson (t)<br>Steve Gray (t)   |                          |      |
| Information Officer   | Michelle Burnett<br>Andrew Gray - v<br>Cathryn Dowd (t) -v<br>Emily Cleaver (t) -v<br>Brook Smith (t)<br>Tricia Boles (t)<br>Ray Butler (t)<br>Kari Hines (t)<br>Ginelle Heller (t) |                          |      |
| Liaison Officer   | Michael Wright<br>Jeffrey Gardner (t)<br>Bradley Cooper (t)   |                          |      |
| COVID Coordinator   | Robert Claybrook (t)  |                          |      |
| <b>Agency Representative</b>                                  |   |                          |      |
| LNF AA  | Jen Hensiek / Carolyn Upton (t)   |                          |      |
| West Lolo AREP  | Eric Tomasik / Dave Wroblewski  |                          |      |
| LNF COVID Support   | Amy Carmichael  |                          |      |
| READ  | Ann Hadlow<br>Mike Mueller / Max Kalina<br>Kris Richardson  |                          |      |
| IBA   | Debby Wesselius / Erin Lally (t)  |                          |      |
| <b>Planning Section</b>                                       |   |                          |      |
| Section Chief   | Jessica Hollingsworth<br>Carol O'Bryan<br>Thomas Barret -v<br>Kelly Russell (t)   |                          |      |
| Situation Unit  | Terry Bowerman  |                          |      |
| Demobilization Unit   | Jeff DeMatteis  |                          |      |
| Resources Unit Leader   | Melonie Sellers<br>Aerin Land   |                          |      |
| Status Check-in   | Kenneth Parker (t)  |                          |      |
| Fire Behavior Analyst   | Kelly Cagle   |                          |      |
| Meteorologist   | Ryan Leach  |                          |      |
| GIS Specialist  | Ethan Robertson<br>Zachary "Clayton" Cooley (t)<br>Matt Murphey   |                          |      |
| Computer Specialist   | Kevin Curry -v<br>Earl "Rusty" Brown -v<br>Joshua Skidmore (t)  |                          |      |
| Training Specialist   | Robbie Hollingsworth -v   |                          |      |
| Documentation   | Jocelyn Howell (t)  |                          |      |
| <b>Logistics Section</b>                                      |   |                          |      |
| Section Chief   | Cameron Crisp<br>Tom Philipps<br>Mark Eaton (t)<br>Carl Bauer (t)   |                          |      |
| Ordering Manager  | Leigh Ostin<br>Sherri Kite - v  |                          |      |
| Supply Unit   | Lemuel Cooksey  |                          |      |
| Receiving/Distribution Manager                                | Alaric Vince Mullins<br>Randall Hamilton (t)  |                          |      |
| Facilities Unit   | John Dunlap (t)<br>Steve Weherley   |                          |      |
| Base Camp Manager   | Carty Carson  |                          |      |
| Ground Support Unit   | Todd Waller   |                          |      |
| Communications Unit   | George Rosenthal<br>Shannon Herring (t)   |                          |      |
| Medical Unit  | Jeff Cummings<br>Sherri McDougal (t)  |                          |      |
| Equipment Manager   | Matt Hancock<br>Keely Benson (t)  |                          |      |
| <b>Operations Section</b>                                     |   |                          |      |
| Operations Chief  | Jeffrey Schardt<br>Steve Gray   |                          |      |
| Field Operations  | Josh Graham<br>Bert Plante (t)  |                          |      |
| Planning Operations   | Shawn Nagle<br>Matt Johnson (t)   |                          |      |
| Night Operations Chief  | Brian Elam  |                          |      |
| Structure Protection Specialist                               | Kevin Grodi (t)   |                          |      |
| <b>Branch Thorn</b>   |   |                          |      |
| Division Charlie / Zulu                                       | Greg Salansky<br>Dave McClay-Schultz (t)  |                          |      |
| Division Echo   | Dan Helderline  |                          |      |
| Division Juliet   | Heath Thomas<br>Matt Hundt (t)  |                          |      |
| Division November   | Jason Klawinsky<br>Matthew Moe (t)  |                          |      |
| Structure Group   | Jared Nobles<br>Brenton Holt (t)  |                          |      |
| Night Group   | Danny Gore  |                          |      |
| <b>Security</b>   |   |                          |      |
| Security Manager  | Greg Blanks   |                          |      |
| National Guard  | Sgt. 1 <sup>st</sup> Class Knowles 406-461-0028   |                          |      |
| National Guard  | Sgt. 1 <sup>st</sup> Class Feight 406-438-6068  |                          |      |
| <b>Air Operations Branch</b>                                  |   |                          |      |
| Air Operations Branch Director                                | Larry Trapp   |                          |      |
| Air Support Group Supervisor                                  | Charles Barclay (t)   |                          |      |
| Air Tactical Group Supervisor                                 | Steve Little  |                          |      |
| <b>Finance Section</b>  |   |                          |      |
| Section Chief   | Jason Gillis<br>Laura Wilson (t)  |                          |      |
| Time Unit   | Colleen Gadd -v<br>Brandon Brown (t)  |                          |      |
| Personnel Time  | Kara Altmiller (t)  |                          |      |
| Cost Unit   | Tom Steele<br>Stacey Eaton (t)  |                          |      |
| Comps / Claims  | Terri McDonald -v   |                          |      |
| <b>Prepared by:</b>   | <b>Aerin Land - RESL</b>  |                          |      |





# Fire Weather Forecast

FORECAST NO: 35  
 PREDICTION FOR: Saturday Day Shift  
 SHIFT DATE: August 14, 2021  
 FORECAST ISSUED: 2030 August 13, 2021

NAME OF FIRE: West Lolo Complex  
 UNIT: MT-LNF / NR Team 1  
 Phone Number: (240) 778-5312  
 Incident Meteorologist: Ryan Leach

## VERY SMOKY CONDITIONS

**WEATHER DISCUSSION:** Today will be hot and dry with a big change coming the next few days. Smoke will be a major factor in the forecast today, and recent forecasts have trended down in wind speeds for today because of the increasing smoke from wildfires in CA, OR, WA, and British Columbia, Canada. The next big change is a dry cold front. Southwest winds will increase on Sunday and peak overnight Sunday into Monday. The front will pass late Monday causing a cool down and a few days with cooler, moister weather.

### WEATHER FORECAST TODAY (SATURDAY):

|                        | Thorne (3,700 ft)   | ICP (2,600 ft)  |
|------------------------|---|---|
| <b>Max/Min Temp.</b>   | 88-93F / 66-71F   | 97-102F / 57-62F  |
| <b>Min/Max RH</b>      | 19-24% / 30-40%   | 13-18% / 55-65%   |
| <b>Winds (20 foot)</b> | Peak ridge winds W 8-11 mph around 1800.<br>Valleys and mid-slope winds terrain driven.<br>Terrain driven winds after 2100. | Light and variable winds through the day as the up valley winds battle with the light easterly winds. |
| <b>Notes</b>           |   |   |

**WEATHER:** Partly cloudy, very smoky.

**LAL:** 1 **CWR:** 0% **HAINES:** 4

**STABILITY / INVERSION:** Inversion break around 1400, then mixing height up to 7,500 ft AGL.

**SMOKE TRANSPORT WIND:** W 9 mph.

**OUTLOOK FOR SUNDAY:** Mostly clear. Max Temps: 86 - 91F. Min RH: 20 - 25%. Max RH: 35 - 45%. Ridge Wind: W 13-16 mph gusts 27 mph. LAL 1. CWR 0%. Haines 4.

### THREE DAY EXTENDED (MONDAY – WEDNESDAY 3,700 FT)

|     | <u>Max T</u> | <u>Min RH</u> | <u>Max RH</u> | <u>Ridge Winds, Afternoon</u> | <u>WX</u> |
|-----|--------------|---------------|---------------|-------------------------------|-----------|
| MON | 78           | 31%           | 60%           | WSW 15 mph gust 28            |           |
| TUE | 71           | 50%           | 65%           | SW 12 mph gust 18             |           |
| WED | 73           | 34%           | 52%           | E 12 mph gust 17              |           |



**FIRE BEHAVIOR FORECAST**

|                                     |  |
|-------------------------------------|--|
| <b>FORECAST NUMBER:</b> #29         | <b>TYPE OF FIRE:</b> Wildland                                  |
| <b>FIRE NAME:</b> West Lolo Complex | <b>OPERATIONAL PERIOD:</b> 8/14/2021 Day Shift and Night Shift |
| <b>DATE ISSUED:</b> 08/13/2021      | <b>TIME ISSUED:</b> 2000                                       |
| <b>UNIT:</b> Lolo National Forest   | <b>WRITTEN:</b> <i>Kelly Eagle</i> - FBAN                      |

**FUEL ASSUMPTIONS:** The major fuel type found on the Lolo Peak Fire is fuel model 10 (mixed conifer with heavy dead/down). There are also areas of TU 5 – which is timber with a shrub component underneath. Fuel arrangement may be a blend of these 2 conditions. There are areas of fuel model 2 (grass with timber overstory) in the lowest elevations. Heavy fuels are very dry and are the primary driver of fire spread. Live fuels will contribute anywhere that wind and slope align.

**WEATHER SUMMARY: Reference fire weather forecast for specifics.**

Today will be hot and dry with a big change coming the next few days. Smoke will be a major factor in the forecast today as well.

**General Fire Behavior Forecast:** Expect fire to be active and continue to back and flank on the southeastern side of the fire. With warmer conditions today, expect more intense fire behavior than recent days with probable torching and high smoke production as the fire backs/flanks around Mt. Silcox. Roll out or aerial ignition could cause torching or short crown runs today. Any wind/slope/fuel alignment could produce canopy fire as well.

**Night Shift:** Fire may remain moderately active until well after dark. Expect diurnal winds as a rule. Fire may move at moderate rates of spread downhill if RH's stay below 40%.

**Critical fire behavior thresholds:**

**RH below 25%      Winds greater than 10      1000 hr FM less than 12%      Haines 5 or 6**

**Specific:**

**Division November** – Expect this division to remain most active with continued backing/flanking in the Mt Silcox/Goat Creek drainage. Spot fire established in Goat Creek drainage may display extremely active fire behavior if it gets across the bottom of the drainage. Slope and fuel will be favorable to do so.

**Division Echo/Juliet** – Spot fire established in Goat Creek drainage will likely move east. Fuels and slope appear favorable for significant growth if fire gets on the east side of Goat Creek drainage. Fire could display intense fire behavior mid to late afternoon if aviation is ineffective or unavailable.

Divisions **Charlie/Zulu** -These divisions have remained quiet for the last few days. Expect that to continue today but with warmer temps, expect more smokes to be visible. Other than rollout – low threat to containment lines.

**Initial Attack** –Expect any new starts to organize and begin to move, especially in the lower elevation fuels where grass component is high. Rates of spread will likely be high in these fuels. Potential does exist for challenges to control efforts.

\*\*\*\*\*

Fine fuel moisture today is -      4%      Rates of Spread in Timber- 5 to 8 chains per hour

Probability of Ignition today -      77%      Rates of Spread in Grass- 35 chains per hour

Max Spotting Distance Today-      ¼ to ½ mile      Flame Lengths- 3 to 7 feet on the surface

**AIR OPERATIONS :** Strong likelihood of smoke impacts to aviation today. Poor visibility expected.

**FIRE BEHAVIOR SAFETY:** A strong uptick in fire weather is predicted today and it is also a transition day. Make sure new resources and leadership are informed about escape routes and safety zones.

| DIVISION ASSIGNMENT LIST  |         |                              |                          | Branch                    |                      | Division/Group                           |         |          |          |
|---|---------|------------------------------|--------------------------|---------------------------|----------------------|--|---------|----------|----------|
| Incident Name   |         |                              |                          | Thorne                    |                      | C / Z                                    |         |          |          |
| West Lolo Complex   |         |                              |                          | Operational Period        |                      |  |         |          |          |
|   |         |                              |                          | Date: 8/14/2021           |                      | Time: 0600-2100                          |         |          |          |
| Operations Personnel  |         |                              |                          |                           |                      |  |         |          |          |
| Operations Chief  |         | Jeff Schardt                 |                          | Branch Director           |                      |  |         |          |          |
| Safety Officer  |         | Buddy Kelley, Steve Gray (t) |                          | Division/Group Supervisor |                      | Greg Salansky<br>Dave Maclay-Schulte (t) |         |          |          |
| Resources Assigned This Period  |         |                              |                          |                           |                      |  |         |          |          |
| Strike Team/Task Force/<br>Resource Designator  | Req#    | Last Shift                   | Leader                   | # Persons                 | Drop Off Point /Time | Pick Up Point / Time                     |         |          |          |
| HC2 National Guard #2   | C-37    | 8/21                         | Dan McGlone/Bryan Vesce  | 24                        | 0600 ICP             | 2100 ICP                                 |         |          |          |
| HC2 National Guard #3   | C-38    | 8/21                         | Chris Young/Zak Munk (t) | 24                        | 0600 ICP             | 2100 ICP                                 |         |          |          |
| TFLD  | O-439   | 8/20                         | Dave Tingley             | 1                         | 0600 ICP             | 2100 ICP                                 |         |          |          |
| TFLD (t)*   | --      | --                           | Dustin Wagoner           | 1                         | 0600 ICP             | 2100 ICP                                 |         |          |          |
| ENG3 J3 Contracting   | E-143   | 8/26                         | Wyatt Lawrence           | 3                         | 0600 ICP             | 2100 ICP                                 |         |          |          |
| ENG3 Hart Ventures  | E-174   | 8/25                         | Joe Wetzel Sr.           | 3                         | 0600 ICP             | 2100 ICP                                 |         |          |          |
| ENG6 COF 684*   | --      | --                           | Brad Williams            | 7                         | 0600 ICP             | 2100 ICP                                 |         |          |          |
| ENG6 AZ 1935  | E-128   | 8/15                         | Colin Port               | 3                         | 0600 ICP             | 2100 ICP                                 |         |          |          |
| ENG6 Global Frontline   | E-176   | 8/19                         | Steven Brouillette       | 2                         | 0600 ICP             | 2100 ICP                                 |         |          |          |
| WTS2 PHR Enterprise   | E-183   | 8/24                         | Paul Hendren             | 1                         | 0600 ICP             | 2100 ICP                                 |         |          |          |
| <b>Safety / Medical</b>   |         |                              |                          |                           |                      |  |         |          |          |
| EMPF  | O-326   | 8/16                         | Skyler Wiemokly          | 1                         | 0600 ICP             | 2100 ICP                                 |         |          |          |
| EMTF  | O-426   | 8/19                         | Tim Higeons              | 1                         | 0600 ICP             | 2100 ICP                                 |         |          |          |
| <b>Work Assignments</b>   |         |                              |                          |                           |                      |  |         |          |          |
| <p><b>Task:</b> Patrol slop-over along Cougar Peak Road in Charlie. Continue patrolling along the indirect fireline in Zulu. Maintain coordination with private inholdings as suppression activities take place. Backhaul all trash and dispose of it properly.</p> <p><b>Purpose:</b> To have control features in place that have the highest probability of success for incident resources. Maintain positive relationships with private landowners and cooperators during suppression operations.</p>  |         |                              |                          |                           |                      |  |         |          |          |
| <b>End State</b>  |         |                              |                          |                           |                      |  |         |          |          |
| The fire is contained at the established control features with minimal impacts to private property, natural resources and values at risk. Local relationships are strengthened through timely communication, cooperation and coordination.  |         |                              |                          |                           |                      |  |         |          |          |
| <b>Special Instructions</b>   |         |                              |                          |                           |                      |  |         |          |          |
| <p>Be bear aware.</p> <p><i>Prioritization of all control or containment actions taken during the operational period in this Division will be at the discretion of the DIVS. Actions may have to be taken by the DIVS that are not enumerated in today's IAP. These actions would be a result of a significant change in actual or expected fire behavior over and above that anticipated at the time the IAP was prepared. These actions will be coordinated with and approved by the OSC whenever possible.</i></p> <p>Assigned resources for respective divisions will monitor Channel 13/Channel Name: Eddy for any initial attack needs. Additionally, Local Duty Officer will contact Day Field Operations Section Chief Josh Graham via cell phone (501-545-3088)</p> <p>*Indicates a local lent resource.</p> |         |                              |                          |                           |                      |  |         |          |          |
| <b>Division/Group Communication Summary</b>   |         |                              |                          |                           |                      |  |         |          |          |
| Function  | Channel | Freq RX                      | Tone RX                  | Freq TX                   | Tone RX              | Function                                 | Channel | Freq RX  | Freq TX  |
| CMD 36  | 9       | 171.0625                     | 136.5                    | 163.8250                  | 136.5                | A/G Pri                                  | 11      | 167.9000 | 167.9000 |
| TAC 6   | 6       | 168.2500                     | 136.5                    | 168.2500                  | 136.5                | A/G Sec                                  |         |          |          |
| Prepared by   |         | Approved By                  |                          |                           |                      | Date                                     |         | Time     |          |
| Jocelyn Howell- RESL(t)   |         | Carol O'Bryan - PSC          |                          |                           |                      | 8/13/2021                                |         | 18:00    |          |





| DIVISION ASSIGNMENT LIST   |         |                                   |         | Branch                    |           | Division/Group       |                              |                      |               |  |
|--|---------|-----------------------------------|---------|---------------------------|-----------|----------------------|------------------------------|----------------------|---------------|--|
| Incident Name  |         |                                   |         | Thorne                    |           | J                    |                              |                      |               |  |
| West Lolo Complex  |         |                                   |         | Operational Period        |           |                      |                              |                      |               |  |
|  |         |                                   |         | Date: 8/14/2021           |           |                      | Time: 0600-2100              |                      |               |  |
| Operations Personnel   |         |                                   |         |                           |           |                      |                              |                      |               |  |
| Operations Chief   |         | Jeff Schardt                      |         | Branch Director           |           |                      |                              |                      |               |  |
| Safety Officer   |         | Shawn Duggar, Brandon Hughes (t)  |         | Division/Group Supervisor |           |                      | Heath Thomas, Matt Hundt (t) |                      |               |  |
| Resources Assigned This Period   |         |                                   |         |                           |           |                      |                              |                      |               |  |
| Strike Team/Task Force/<br>Resource Designator   | Req#    | Last Shift                        | Leader  |                           | # Persons | Drop Off Point /Time |                              | Pick Up Point / Time |               |  |
| UNSTAFFED  |         |                                   |         |                           |           |                      |                              |                      |               |  |
|  |         |                                   |         |                           |           |                      |                              |                      |               |  |
|  |         |                                   |         |                           |           |                      |                              |                      |               |  |
|  |         |                                   |         |                           |           |                      |                              |                      |               |  |
|  |         |                                   |         |                           |           |                      |                              |                      |               |  |
|  |         |                                   |         |                           |           |                      |                              |                      |               |  |
|  |         |                                   |         |                           |           |                      |                              |                      |               |  |
|  |         |                                   |         |                           |           |                      |                              |                      |               |  |
|  |         |                                   |         |                           |           |                      |                              |                      |               |  |
|  |         |                                   |         |                           |           |                      |                              |                      |               |  |
|  |         |                                   |         |                           |           |                      |                              |                      |               |  |
|  |         |                                   |         |                           |           |                      |                              |                      |               |  |
|  |         |                                   |         |                           |           |                      |                              |                      |               |  |
|  |         |                                   |         |                           |           |                      |                              |                      |               |  |
|  |         |                                   |         |                           |           |                      |                              |                      |               |  |
|  |         |                                   |         |                           |           |                      |                              |                      |               |  |
|  |         |                                   |         |                           |           |                      |                              |                      |               |  |
|  |         |                                   |         |                           |           |                      |                              |                      |               |  |
|  |         |                                   |         |                           |           |                      |                              |                      |               |  |
|  |         |                                   |         |                           |           |                      |                              |                      |               |  |
| Work Assignments   |         |                                   |         |                           |           |                      |                              |                      |               |  |
| <b>Task:</b> Continue scouting for alternate line locations and control features that could check/slow the fires spread north of the Liver Ridge road system. Monitor fire behavior and movement as needed. Coordinate all line construction activities with assigned READ.  |         |                                   |         |                           |           |                      |                              |                      |               |  |
| <b>Purpose:</b> Have continuous fuel break from Thompson River Road to Fishtrap to slow eastward progression of fire onto state and private lands. To establish indirect control features, with minimum impact to natural resources, that will be used to stop fire progression.   |         |                                   |         |                           |           |                      |                              |                      |               |  |
| End State  |         |                                   |         |                           |           |                      |                              |                      |               |  |
| Fire spread is limited and does not impact state/private lands. Values at risk are not impacted by fire.   |         |                                   |         |                           |           |                      |                              |                      |               |  |
| Special Instructions   |         |                                   |         |                           |           |                      |                              |                      |               |  |
| <i>Prioritization of all control or containment actions taken during the operational period in this Division will be at the discretion of the DIVS. Actions may have to be taken by the DIVS that are not enumerated in today's IAP. These actions would be a result of a significant change in actual or expected fire behavior over and above that anticipated at the time the IAP was prepared. These actions will be coordinated with and approved by the OSC whenever possible.</i> |         |                                   |         |                           |           |                      |                              |                      |               |  |
| Assigned resources for respective divisions will monitor Channel 13/Channel Name: Eddy for any initial attack needs. Additionally, Local Duty Officer will contact Day Field Operations Section Chief Josh Graham via cell phone (501-545-3088)  |         |                                   |         |                           |           |                      |                              |                      |               |  |
| *Indicates a local lent resource.  |         |                                   |         |                           |           |                      |                              |                      |               |  |
| Division/Group Communication Summary   |         |                                   |         |                           |           |                      |                              |                      |               |  |
| Function   | Channel | Freq RX                           | Tone RX | Freq TX                   | Tone RX   | Function             | Channel                      | Freq RX              | Freq TX       |  |
| CMD 11   | 8       | 170.6875                          | 136.5   | 166.5750                  | 136.5     | A/G Pri              | 11                           | 167.9000             | 167.9000      |  |
| TAC 4  | 4       | 166.7250                          | 136.5   | 166.7250                  | 136.5     | A/G Sec              |                              |                      |               |  |
| Prepared by<br>Jocelyn Howell- RESL(t)   |         | Approved By<br>Carol O'Bryan- PSC |         |                           |           | Date<br>8/13/2021    |                              |                      | Time<br>18:00 |  |

| DIVISION ASSIGNMENT LIST   |         |                                  |               | Branch                    |                      | Division/Group                |         |          |          |
|--|---------|----------------------------------|---------------|---------------------------|----------------------|-------------------------------|---------|----------|----------|
| Incident Name  |         |                                  |               | Thorne                    |                      | N                             |         |          |          |
| West Lolo Complex  |         |                                  |               | Operational Period        |                      |                               |         |          |          |
|  |         |                                  |               | Date: 8/14/2021           |                      | Time: 0600-2100               |         |          |          |
| Operations Personnel   |         |                                  |               |                           |                      |                               |         |          |          |
| Operations Chief   |         | Jeff Schardt                     |               | Branch Director           |                      |                               |         |          |          |
| Safety Officer   |         | Shawn Duggar, Brandon Hughes (t) |               | Division/Group Supervisor |                      | Jason Klawinsky, Matt Moe (t) |         |          |          |
| Resources Assigned This Period   |         |                                  |               |                           |                      |                               |         |          |          |
| Strike Team/Task Force/<br>Resource Designator   | Req#    | Last Shift                       | Leader        | # Persons                 | Drop Off Point /Time | Pick Up Point / Time          |         |          |          |
| HC1 Lolo***  | --      | 8/20                             | Shawn Faiella | 20                        | 0600 ICP             | 2100 ICP                      |         |          |          |
| T2IA Gannett Glacier***  | --      | --                               | Bryan Quimby  | 21                        | 0600 ICP             | 2100 ICP                      |         |          |          |
| HC2 R&R Contracting  | C-25    | 8/17                             | Jamie Lopez   | 20                        | 0600 ICP             | 2100 ICP                      |         |          |          |
| PTF Mod #2*  | --      | --                               | Jess Thompson | 5                         | 0600 ICP             | 2100 ICP                      |         |          |          |
| FMOD Miller Creek  | O-32    | 8/16                             | Pete Clifford | 2                         | 0600 ICP             | 2100 ICP                      |         |          |          |
| FMOD Swedberg  | O-33    | 8/18                             | Elijah Shown  | 2                         | 0600 ICP             | 2100 ICP                      |         |          |          |
| TFLD   | O-332   | 8/14                             | Tony Maciel   | 1                         | 0600 ICP             | 2100 ICP                      |         |          |          |
| TFLD (t)   | O-275   | 8/18                             | Dan Poole     | 1                         | 0600 ICP             | 2100 ICP                      |         |          |          |
| TFLD (t)*  | --      | 8/18                             | Cody Ishler   | 1                         | 0600 ICP             | 2100 ICP                      |         |          |          |
| ENG4 KNF 472**   | --      | 8/14                             | Nathan Donner | 7                         | 0600 ICP             | 2100 ICP                      |         |          |          |
| ENG6 Mississippi 643*  | --      | --                               | Chris Haines  | 3                         | 0600 ICP             | 2100 ICP                      |         |          |          |
| ENG6 East Missoula   | E-187   | 8/17                             | Ryan Sedgley  | 2                         | 0600 ICP             | 2100 ICP                      |         |          |          |
| <b>Work Assignments</b>  |         |                                  |               |                           |                      |                               |         |          |          |
| <p><b>Task:</b> Coordinate aerial and ground ignitions in the Ashley Creek area as directed by Operations. Secure and cool fires edge as it is received on indirect fireline. Utilize aircraft to keep fire in check in the Ashley Creek Drainage. Maintain coordination with private inholdings as conditions change. Monitor fire spread as needed.</p> <p><b>Purpose:</b> To have control features in place that have the highest probability of success for incident resources. Maintain positive relationships with private landowners and cooperators during suppression operations.</p>   |         |                                  |               |                           |                      |                               |         |          |          |
| <b>End State</b>   |         |                                  |               |                           |                      |                               |         |          |          |
| The fire is contained at the established control features with minimal impacts to private property, natural resources and values at risk. Local relationships are strengthened through timely communication, cooperation and coordination.   |         |                                  |               |                           |                      |                               |         |          |          |
| <b>Special Instructions</b>  |         |                                  |               |                           |                      |                               |         |          |          |
| <p><i>Prioritization of all control or containment actions taken during the operational period in this Division will be at the discretion of the DIVS. Actions may have to be taken by the DIVS that are not enumerated in today's IAP. These actions would be a result of a significant change in actual or expected fire behavior over and above that anticipated at the time the IAP was prepared. These actions will be coordinated with and approved by the OSC whenever possible.</i></p> <p>Assigned resources for respective divisions will monitor Channel 13/Channel Name: Eddy for any initial attack needs. Additionally, Local Duty Officer will contact Day Field Operations Section Chief Josh Graham via cell phone (501-545-3088)</p> <p>*Indicates a local lent resource.<br/> **Denotes a lend lease resource.<br/> ***Denotes a mission critical resource.</p> |         |                                  |               |                           |                      |                               |         |          |          |
| <b>Division/Group Communication Summary</b>  |         |                                  |               |                           |                      |                               |         |          |          |
| Function   | Channel | Freq RX                          | Tone RX       | Freq TX                   | Tone RX              | Function                      | Channel | Freq RX  | Freq TX  |
| CMD 4  | 7       | 170.0000                         | 136.5         | 166.6750                  | 136.5                | A/G Pri                       | 11      | 167.9000 | 167.9000 |
| TAC 5  | 5       | 166.7750                         | 136.5         | 166.7750                  | 136.5                | A/G Sec                       |         |          |          |
| Prepared by  |         | Approved By                      |               |                           |                      | Date                          |         | Time     |          |
| Jocelyn Howell- RESL(t)  |         | Carol O'Bryan- PSC               |               |                           |                      | 8/13/2021                     |         | 18:00    |          |

| DIVISION ASSIGNMENT LIST   |         |                                 |                   | Branch                    |                         | Division/Group                |         |          |          |
|--|---------|---------------------------------|-------------------|---------------------------|-------------------------|-------------------------------|---------|----------|----------|
| Incident Name  |         |                                 |                   | Thorne                    |                         | N                             |         |          |          |
| West Lolo Complex  |         |                                 |                   | Operational Period        |                         |                               |         |          |          |
|  |         |                                 |                   | Date: 8/14/2021           |                         | Time: 0600-2100               |         |          |          |
| Operations Personnel   |         |                                 |                   |                           |                         |                               |         |          |          |
| Operations Chief   |         | Jeff Schardt                    |                   | Branch Director           |                         |                               |         |          |          |
| Safety Officer   |         | Shawn Duggar, Brandon Hughes(t) |                   | Division/Group Supervisor |                         | Jason Klawinsky, Matt Moe (t) |         |          |          |
| Resources Assigned This Period   |         |                                 |                   |                           |                         |                               |         |          |          |
| Strike Team/Task Force/<br>Resource Designator   | Req#    | Last Shift                      | Leader            | #<br>Persons              | Drop Off Point<br>/Time | Pick Up Point / Time          |         |          |          |
| SKG2 Wildfire Services   | E-40    | 8/19                            | Dave Fish         | 1                         | 0600 ICP                | 2100 ICP                      |         |          |          |
| WTS2 Ivanoff   | E-79    | 8/14                            | Brad Ivanoff      | 1                         | 0600 ICP                | 2100 ICP                      |         |          |          |
| WTS2 Wildland Cont.  | E-137   | 8/26                            | Shelton Bollinger | 1                         | 0600 ICP                | 2100 ICP                      |         |          |          |
| WTS2 Cahoon  | E-138   | 8/24                            | Carson Chisholm   | 1                         | 0600 ICP                | 2100 ICP                      |         |          |          |
| WTS2 Moore<br>Earthmover   | E-173   | 8/19                            | Buddy Remstetter  | 1                         | 0600 ICP                | 2100 ICP                      |         |          |          |
| WTS2 Taylor Services   | E-181   | 8/25                            | Bob Taylor        | 1                         | 0600 ICP                | 2100 ICP                      |         |          |          |
| WTS2 Taylor Services   | E-185   | 8/25                            | Mike Grzechowiak  | 1                         | 0600 ICP                | 2100 ICP                      |         |          |          |
| DOZ3 Traver's Dozer  | E-55    | 8/20                            | Ben Traver        | 1                         | 0600 ICP                | 2100 ICP                      |         |          |          |
| <b>Safety / Medical</b>  |         |                                 |                   |                           |                         |                               |         |          |          |
| REMS1  | O-63    | 8/27                            | Ray Storm         | 2                         | 0600 ICP                | 2100 ICP                      |         |          |          |
| REMS1  | O-63    | 8/21                            | Cody Bennett      | 1                         | 0600 ICP                | 2100 ICP                      |         |          |          |
| REMS1  | O-63    | 8/24                            | Kylee Wiser       | 1                         | 0600 ICP                | 2100 ICP                      |         |          |          |
| REMS1  | O-63    | 8/26                            | Devon Pulvion     | 1                         | 0600 ICP                | 2100 ICP                      |         |          |          |
| Work Assignments   |         |                                 |                   |                           |                         |                               |         |          |          |
| <p><b>Task:</b> Coordinate aerial and ground ignitions in the Ashley Creek area as directed by Operations. Secure and cool fires edge as it is received on indirect fireline. Utilize aircraft to keep fire in check in the Ashley Creek Drainage. Install progressive hoselay between Ashley Creek and the Game Range on the indirect fireline. Maintain coordination with private inholdings as conditions change. Monitor fire spread as needed.</p> <p><b>Purpose:</b> To have control features in place that have the highest probability of success for incident resources. Maintain positive relationships with private landowners and cooperators during suppression operations.</p>   |         |                                 |                   |                           |                         |                               |         |          |          |
| <b>End State</b>   |         |                                 |                   |                           |                         |                               |         |          |          |
| The fire is contained at the established control features with minimal impacts to private property, natural resources and values at risk. Local relationships are strengthened through timely communication, cooperation and coordination.   |         |                                 |                   |                           |                         |                               |         |          |          |
| <b>Special Instructions</b>  |         |                                 |                   |                           |                         |                               |         |          |          |
| <p><i>Prioritization of all control or containment actions taken during the operational period in this Division will be at the discretion of the DIVS. Actions may have to be taken by the DIVS that are not enumerated in today's IAP. These actions would be a result of a significant change in actual or expected fire behavior over and above that anticipated at the time the IAP was prepared. These actions will be coordinated with and approved by the OSC whenever possible.</i></p> <p>Assigned resources for respective divisions will monitor Channel 13/Channel Name: Eddy for any initial attack needs. Additionally, Local Duty Officer will contact Day Field Operations Section Chief Josh Graham via cell phone (501-545-3088)</p> |         |                                 |                   |                           |                         |                               |         |          |          |
| <b>Division/Group Communication Summary</b>  |         |                                 |                   |                           |                         |                               |         |          |          |
| Function   | Channel | Freq RX                         | Tone RX           | Freq TX                   | Tone RX                 | Function                      | Channel | Freq RX  | Freq TX  |
| CMD 4  | 7       | 170.0000                        | 136.5             | 166.6750                  | 136.5                   | A/G Pri                       | 11      | 167.9000 | 167.9000 |
| TAC 5  | 5       | 166.7750                        | 136.5             | 166.7750                  | 136.5                   | A/G Sec                       |         |          |          |
| Prepared by  |         | Approved By                     |                   |                           |                         | Date                          |         | Time     |          |
| Jocelyn Howell- RESL(t)  |         | Carol O'Bryan- PSC              |                   |                           |                         | 8/13/2021                     |         | 18:00    |          |



| <b>DIVISION ASSIGNMENT LIST</b> |                              |  | Branch                    | Division/Group   |                                |
|---------------------------------|------------------------------|--|---------------------------|------------------|--------------------------------|
| <b>Incident Name</b>            |                              |  | <b>Thorne</b>             | <b>Structure</b> |                                |
| <b>West Lolo Complex</b>        |                              |  | Operational Period        |                  |                                |
|                                 |                              |  | Date: 8/14/2021           |                  | Time: 0600-2100                |
| <b>Operations Personnel</b>     |                              |  |                           |                  |                                |
| Operations Chief                | Jeff Schardt                 |  | Branch Director           |                  |                                |
| Safety Officer                  | Buddy Kelley, Steve Gray (t) |  | Division/Group Supervisor |                  | Jared Nobles, Brenton Holt (t) |

| <b>Resources Assigned This Period</b>          |          |            |                |              |                      |                      |
|--|----------|------------|----------------|--------------|----------------------|----------------------|
| Strike Team/Task Force/<br>Resource Designator | Req#     | Last Shift | Leader         | #<br>Persons | Drop Off Point /Time | Pick Up Point / Time |
| TFLD   | O-464    | 8/25       | Stephan Osmond | 1            | 0600 ICP             | 2100 ICP             |
| ENG3 Rocky Mountain                            | E-188    | 8/17       | Trevor Scott   | 3            | 0600 ICP             | 2100 ICP             |
| ENG6 LNF 612                                   | E-155    | 8/15       | Angel Montoya  | 4            | 0600 ICP             | 2100 ICP             |
| ENG6 Brush 13                                  | E-156    | 8/21       | Damian Trow    | 3            | 0600 ICP             | 2100 ICP             |
| ENG6 Wellington                                | E-157    | 8/14       | David Cropp    | 3            | 0600 ICP             | 2100 ICP             |
| ENG6 Red Dog Wildfire                          | E-180    | 8/19       | Tim England    | 4            | 0600 ICP             | 2100 ICP             |
| WTT1 Leviathan                                 | E-192    | 8/18       | James Burr     | 1            | 0600 ICP             | 2100 ICP             |
| WTS2 Metal Works of MT                         | E-184    | 8/24       | Charles Webber | 1            | 0600 ICP             | 2100 ICP             |
| STPS   | O-469.50 | 8/25       | Kevin Grodi    | 1            | 0600 ICP             | 2100 ICP             |
|  |          |            |                |              |                      |                      |
|  |          |            |                |              |                      |                      |
|  |          |            |                |              |                      |                      |
|  |          |            |                |              |                      |                      |
|  |          |            |                |              |                      |                      |
|  |          |            |                |              |                      |                      |
|  |          |            |                |              |                      |                      |

**Work Assignments**  
**Task:** Be prepared to assist other divisions and support firing operations as requested. Begin brushing around homes in the Thompson River Evacuation Zone. Make contact with home owners prior to beginning any work on private property. Continue backhaul of unused pumps and water handling supplies.

**Purpose:** Determine appropriate defensive actions to be taken and resources required for a timely response.

**End State**  
All affected identified values at risk remain in their discovered condition and property owners restored to their place of residence. A solid response framework is turned over to Operations of Emergency Services.

**Special Instructions**  
*Prioritization of all control or containment actions taken during the operational period in this Division will be at the discretion of the DIVS. Actions may have to be taken by the DIVS that are not enumerated in today's IAP. These actions would be a result of a significant change in actual or expected fire behavior over and above that anticipated at the time the IAP was prepared. These actions will be coordinated with and approved by the OSC whenever possible.*

Assigned resources for respective divisions will monitor Channel 13/Channel Name: Eddy for any initial attack needs. Additionally, Local Duty Officer will contact Day Field Operations Section Chief Josh Graham via cell phone (501-545-3088)

| <b>Division/Group Communication Summary</b> |         |                                   |         |          |         |                   |         |              |              |  |
|---|---------|-----------------------------------|---------|----------|---------|-------------------|---------|--------------|--------------|--|
| Function                                    | Channel | Freq RX                           | Tone RX | Freq TX  | TONE TX | Function          | Channel | Frequency RX | Frequency TX |  |
| CMD 4                                       | 7       | 170.0000                          | 136.5   | 166.6750 | 136.5   | A/G Pri           | 11      | 167.9000     | 167.9000     |  |
| TAC 2                                       | 2       | 168.2000                          | 136.5   | 168.2000 | 136.5   | A/G Sec           |         |              |              |  |
| Prepared by<br>Jocelyn Howell- RESL(t)      |         | Approved By<br>Carol O'Bryan- PSC |         |          |         | Date<br>8/13/2021 |         |              | Time<br>1800 |  |

|                                 |                  |   |                |
|---------------------------------|------------------|---|----------------|
| <b>DIVISION ASSIGNMENT LIST</b> |                  | Branch                                      | Division/Group |
| Incident Name                   |                  | Thorne                                      | Night          |
| West Lolo Complex               |                  | Operational Period                          |                |
|                                 |                  | Date: 8/14/2021 – 8/15/2021 Time: 1600-0800 |                |
| Operations Personnel            |                  |   |                |
| Operations Chief                | Brian Elam       | Branch Director                             |                |
| Safety Officer                  | Larry Holsomback | Division/Group Supervisor                   | Daniel Gore    |

**Resources Assigned This Period**

| Strike Team/Task Force/<br>Resource Designator | Req#  | Last Shift | Leader        | # Persons | Drop Off Point /Time | Pick Up Point / Time |
|--|-------|------------|---------------|-----------|----------------------|----------------------|
| HC1 Lewis & Clark***                           | --    | --         | Nick Wydra    | 20        | 1600 ICP             | 0800 ICP             |
| TFLD   | O-465 | 8/25       | Theo Johnson  | 1         | 1600 ICP             | 0800 ICP             |
| ENG6 Wolf Rock                                 | E-186 | 8/17       | Ken Spacht    | 3         | 1600 ICP             | 0800 ICP             |
| ENG6 CO River Fire                             | E-189 | 8/18       | Tim Nix       | 3         | 1600 ICP             | 0800 ICP             |
| ENG6 Hart Ventures                             | E-126 | 8/17       | Eugene Weasel | 3         | 1600 ICP             | 0800 ICP             |
| ENG6 Cahoon                                    | E-130 | 8/24       | Robert Snow   | 3         | 1600 ICP             | 0800 ICP             |
| ENG6 Dillon                                    | E-141 | 8/27       | Rob Dillon    | 3         | 1600 ICP             | 0800 ICP             |
| WTS3 Mission Mtn.                              | E-148 | 8/24       | Gordan Dann   | 1         | 1600 ICP             | 0800 ICP             |
| WTT2 Wildfire Resources and Service            | E-153 | 8/25       | James Hieb    | 1         | 1600 ICP             | 0800 ICP             |
| SKG1 Bigfoot                                   | E-39  | 8/24       | Kurt Spencer  | 1         | 1600 ICP             | 0800 ICP             |
| EMTF   | O-440 | 8/22       | Carl Joyce    | 1         | 1600 ICP             | 0800 ICP             |
|  |       |            |               |           |                      |                      |
|  |       |            |               |           |                      |                      |
|  |       |            |               |           |                      |                      |
|  |       |            |               |           |                      |                      |

**Work Assignments**

**Task:** Be prepared to take over firing/holding operations from November. Resources will conduct ground firing operations if needed. Utilize hoselay and other group resources to hold and cool fires edge. Patrol slop-over from Graves Creek along the machine line located on Cougar Peak in Charlie.

**Purpose:** To use established control features that will prevent further fire movement outside Forest Service boundaries.

**End State**

The fire is contained at the established control lines and values at risk are protected.

**Special Instructions**

*Prioritization of all control or containment actions taken during the operational period in this Division will be at the discretion of the DIVS. Actions may have to be taken by the DIVS that are not enumerated in today's IAP. These actions would be a result of a significant change in actual or expected fire behavior over and above that anticipated at the time the IAP was prepared. These actions will be coordinated with and approved by the OSC whenever possible.*

Assigned resources will monitor Channel 13/Channel Name: Eddy for any initial attack needs. Additionally, Local Duty Officer will contact Night Field Operations Section Chief Brian Elam via cell phone (336-467-7254)

\*\*\*Denotes a mission critical resource.

**Division/Group Communication Summary**

| Function | Channel | Freq RX  | Tone RX | Freq TX  | Tone TX | Function | Channel | Freq RX  | Freq TX  |
|----------|---------|----------|---------|----------|---------|----------|---------|----------|----------|
| CMD 36   | 9       | 171.0625 | 136.5   | 163.8250 | 136.5   | A/G Pri  | 11      | 167.9000 | 167.9000 |
| TAC 1    | 1       | 168.0500 | 136.5   | 168.0500 | 136.5   | A/G Sec  |         |          |          |
|          |         |          |         |          |         |          |         |          |          |

|                         |                    |           |       |
|-------------------------|--------------------|-----------|-------|
| Prepared by             | Approved By        | Date      | Time  |
| Jocelyn Howell- RESL(t) | Carol O'Bryan- PSC | 8/13/2021 | 18:00 |

| DIVISION ASSIGNMENT LIST  |                                   |               |                                    | Branch                    | Division/Group       |                      |  |
|---|-----------------------------------|---------------|------------------------------------|---------------------------|----------------------|----------------------|--|
| Incident Name   |                                   |               |                                    | Thorne                    | Security             |                      |  |
| West Lolo Complex   |                                   |               |                                    | Operational Period        |                      |                      |  |
|   |                                   |               |                                    | Date: 8/14/2021           | 24-Hours             |                      |  |
| Operations Personnel  |                                   |               |                                    |                           |                      |                      |  |
| Operations Chief  |                                   |               |                                    | Branch Director           |                      |                      |  |
| Safety Officer  |                                   |               |                                    | Division/Group Supervisor |                      | Greg Blanks          |  |
| Resources Assigned This Period  |                                   |               |                                    |                           |                      |                      |  |
| Strike Team/Task Force/<br>Resource Designator  | Req#                              | Last<br>Shift | Leader                             | #<br>Persons              | Drop Off Point /Time | Pick Up Point / Time |  |
| <b>Day Shift</b>  |                                   |               |                                    |                           |                      |                      |  |
| SEC1  | O-387                             | 8/17          | Branden Kieffer                    | 1                         | 0530 ICP             | 2200 ICP             |  |
| SEC1  | O-438                             | 8/26          | Josh Hindman                       | 1                         | 0530 ICP             | 2200 ICP             |  |
| <b>Night Shift</b>  |                                   |               |                                    |                           |                      |                      |  |
| SEC1  | O-321                             | 8/17          | Eric Briske                        | 1                         | 1700 ICP             | 0930 ICP             |  |
| SEC1  | O-397                             | 8/17          | Armando Ariga                      | 1                         | 1700 ICP             | 0930 ICP             |  |
| <b>24-Hour Rotation</b>   |                                   |               |                                    |                           |                      |                      |  |
| National Guard  | O-367                             |               | Sgt. 1 <sup>st</sup> Class Knowles | 1                         | 24-Hour Rotation     | 24-Hour Rotation     |  |
| National Guard  | O-367                             |               | Sgt. 1 <sup>st</sup> Class Feight  | 1                         | 24-Hour Rotation     | 24-Hour Rotation     |  |
|   |                                   |               |                                    |                           |                      |                      |  |
|   |                                   |               |                                    |                           |                      |                      |  |
|   |                                   |               |                                    |                           |                      |                      |  |
|   |                                   |               |                                    |                           |                      |                      |  |
|   |                                   |               |                                    |                           |                      |                      |  |
|   |                                   |               |                                    |                           |                      |                      |  |
|   |                                   |               |                                    |                           |                      |                      |  |
|   |                                   |               |                                    |                           |                      |                      |  |
|   |                                   |               |                                    |                           |                      |                      |  |
|   |                                   |               |                                    |                           |                      |                      |  |
|   |                                   |               |                                    |                           |                      |                      |  |
|   |                                   |               |                                    |                           |                      |                      |  |
|   |                                   |               |                                    |                           |                      |                      |  |
|   |                                   |               |                                    |                           |                      |                      |  |
| <b>Work Assignments</b>   |                                   |               |                                    |                           |                      |                      |  |
| <b>Task:</b> Staff stationary control points and conduct law enforcement patrol of operational areas.   |                                   |               |                                    |                           |                      |                      |  |
| <b>Purpose:</b> To control ingress and egress points to operational area and provide federal law enforcement patrol of operational area to enforce closures and respond to law enforcement incidents.   |                                   |               |                                    |                           |                      |                      |  |
| <b>End State:</b>   |                                   |               |                                    |                           |                      |                      |  |
| Maintain public and firefighter safety and security of assets assigned to the fire.   |                                   |               |                                    |                           |                      |                      |  |
| <b>Special Instructions</b>   |                                   |               |                                    |                           |                      |                      |  |
| <ul style="list-style-type: none"> <li>Graves Roadblock – Staffed 24 hours.</li> <li>Weber Roadblock – Staffed 24 hours. <ul style="list-style-type: none"> <li>Weber is closed to the public, open only to the firefighters.</li> <li>Silcox is open to the public.</li> </ul> </li> <li>Ashley Roadblock – Staffed 24 hours. <ul style="list-style-type: none"> <li>Closed to the public.</li> </ul> </li> <li>Airport – Staffed 1900 – 0700</li> </ul> |                                   |               |                                    |                           |                      |                      |  |
| For further information regarding road closures please contact the local Sheriff.   |                                   |               |                                    |                           |                      |                      |  |
| <b>Division/Group Communication Summary</b>   |                                   |               |                                    |                           |                      |                      |  |
| Prepared by<br>Jocelyn Howell– RESL(t)  | Approved By<br>Carol O'Bryan– PSC |               |                                    | Date<br>8/13/2021         | Time<br>1800         |                      |  |



**AIR OPERATIONS SUMMARY 220** Prepared By: Larry M. Trap Prepared: **08/13/21** Prepared Time: 19:00 hrs.

**1. INCIDENT NAME: WEST LOLO COMPLEX** **2. OPERATIONAL PERIOD** **08/14/21** **START TIME:** 0700 **END TIME:** 2100 **SUNRISE:** 0635 **SUNSET:** 2054

**3. REMARKS** (Safety Notes, Hazards, Air Operations Special Equipment, etc.):

**Monitor 118.6750 (Thorne TFR) when operating in or near the area from Plains to the Thorne Fire!! Plains Helibase will also monitor this frequency.**


- Assess mission complexity and the Benefit vs Risk of the mission.
- Ensure visibility and winds are adequate to safely conduct flight operations.
- Ensure safe vertical & horizontal separation between aircraft in smoky conditions.
- Utilize check points and call in and out of the dips.
- If you see a UAS on your division report it up the chain of command to Air Operations, it may or may not be a friendly!
- Smoky conditions can hamper our aviation operations adhere to visibility limitations, and DO NOT be pressured into accepting a mission that you know, or feel is unsafe!

**4. READY ALERT AIRCRAFT:**  
Not assigned

**Air Ambulance:**  
Life Flight - Missoula  
Order through Communications  
Tan 155.3400 (TT 156.7)  
See Medical Plan in the IAP  
Hospital Communications  
White 155.2800 (TT 156.7)

**5. TFRs: West Lolo Complex**  
Thorne: 1/3680  
118.6750, 10,500' MSL

Southern Team Gold TFR Map




| 6. PERSONNEL      | NAME            | PHONE #      | 7. FREQUENCIES         | AM       | FM                       | 8. FIXED-WING Avail/ Type/ Make-Model/ N#/ Base  |
|-------------------|-----------------|--------------|------------------------|----------|--------------------------|--|
| Team AOB          | Larry Trapp     | 307-320-6566 | A/A Thorne (TFR) A-3   | 118.6750 |                          | AIRTANKERS: ORDER THRU ATGS OR AIR OPS   |
| ASGS (T)          | Charles Barclay | 703-447-1231 | Secondary A/A A-7      | 118.225  |                          |  |
| HEBM (T)          | Justin Gilbert  | 307-840-3030 | Primary A/G A-16       |          | 167.900                  | PLAINS RETARDANT BASE RAMP FREQ: 123.975   |
| ATGS              | Steve Little    | 828-778-2077 | Secondary A/G A-17     |          | 168.2875                 | TOLC FOR SEAT's 163.100  |
|                   |                 |              | Rotorwing A-55         | 124.500  |                          | ATGS Platforms:<br>N24HD King air 200 (Little)   |
|                   |                 |              | Plains CTAF            | 122.900  |                          |  |
|                   |                 |              | White                  |          | 155.2800<br>(156.7 Tx)   |  |
| Plains Helibase   |                 | 720-326-2773 | Missoula Flight Follow |          | 166.500<br>(127.3 Tx/Rx) | <b>Email daily Helicopter costs to:</b><br>westlolohelibase@gmail.com  |
| Missoula Aircraft |                 | 406-829-7060 | Tan                    |          | 155.3400<br>(156.7 Tx)   | <b>All others mail to:</b><br>2021.westlolo.finance@firenet.gov<br>West Lolo Charge code: MT-LNF-000893<br>P1N5AN (0116)<br>Granite Pass Complex: MT-LNF-000962<br>P1N5N5 (0116) |
|                   |                 |              | Air Guard              |          | 168.6250<br>(110.9 Tx)   |  |

**9. HELICOPTERS**

| FAA N# | TY | MAKE/ MODEL | BASE   | START | AVAIL | REMARKS            | FAA N# | TY | MAKE/ MODEL | BASE | START | AVAIL | REMARKS |
|--------|----|-------------|--------|-------|-------|--------------------|--------|----|-------------|------|-------|-------|---------|
| N46HX  | 3  | Bell 407    | Plains | 0800  | 0830  | Recon/PSD          |        |    |             |      |       |       |         |
| N617AC | 3  | Bell 407    | Plains | 0800  | 0830  | Recon/IR           |        |    |             |      |       |       |         |
| N1215F | 2  | Bell UH-1H  | Plains |       |       | Days Off           |        |    |             |      |       |       |         |
| N160NW | 1  | UH-60A      | Plains | 0800  | 0830  | Restricted/Buckets |        |    |             |      |       |       |         |
| N716HT | 1  | CH-54B      | Plains | 0800  | 0830  | Restricted/Tanked  |        |    |             |      |       |       |         |

| 10. TASK/ MISSION/ ASSIGNMENT (Type/ function includes: Air Tactical, Retardant, Recon, Personnel Transport, Bucket Operations, SAR, etc.) |                                |   |          |
|--|--------------------------------|---|----------|
| TYPE/FUNCTION  | PRIORITY                       | NAME OF PERSONNEL OR CARGO (if applicable)<br>or instructions for tactical aircraft | FLY FROM |
| Buckets  | 1                              |   | Helibase |
| Recon/PSD  | 2                              |   | Helibase |
| Slings   | 3                              |   | Helibase |
| <b>Fires</b>   |                                |   |          |
| Thorne:  | N 47° 42.137' X W 115° 18.384' | <b>Helibase, Dip Sites, Pick Up Sites, etc.</b>                                     |          |
|  |                                | <b>Plains Helibase(S34):</b> N 47° 28.51' X W 114° 53.96' Elevation: 2470'          |          |
|  |                                | For a complete list see Ops Map:  |          |
|  |                                |   |          |
|  |                                |   |          |
|  |                                |   |          |
|  |                                |   |          |
|  |                                |   |          |
|  |                                |   |          |

**Other Assigned Support Equipment**

|   |  |                  |       |
|---|--|------------------|-------|
| <p><b>REMINDER!!</b><br/>A flight risk assessment (GAR) needs to be completed prior to daily missions</p> <p><b>Region 1 CWN Helicopter GAR</b></p> |  | Helibase Trailer | E-81  |
|   |  | Plains           |       |
|   |  | Hotsy            | S-27  |
|   |  | Water Tender     | E-122 |
|   |  | LUA Plains       | S-66  |

**Wind Restrictions**

| Flights above ground level | Flight Permitted in Winds<br>Less than / Maximum Gust Spread |                                 |
|----------------------------|--|---------------------------------|
|                            | Type 1 Helicopters   | Type 2 Helicopters              |
| More than 500' AGL         | <50kts / Gusts: N/A  | <50kts / Gusts: N/A             |
| Less than 500' AGL         | <40kts / Max Gust Spread: 15kts                              | <30kts / Max Gust Spread: 15kts |

Approved by: /s/ *Larry M. Trapp* AOB





**HEALTH AND SAFETY MESSAGE**

***SAFETY** starts with **YOU***

We are **ALL** accountable for **SAFE** behaviors

|                                    |                                       |
|------------------------------------|---------------------------------------|
| <b>INCIDENT:</b> West Lolo Complex | <b>DATE:</b> Saturday August 14, 2021 |
|------------------------------------|---------------------------------------|

**Major Hazards & Risks:** Fire Behavior, Driving & Hazard Trees

**Driving:** *Weekend tourism will continue to increase traffic on roads around the fire. Deer are numerous and may be moving into new areas around active fire. Mitigate these hazards through slower speeds and alert driving. Be courteous to other motorists, bikers and pedestrians. Smoke and night operations both result in lower visibility. Reduce your speed as needed for these conditions.*

**Hazard Trees:** *Work is shifting into new areas of the fire. **Check these new areas for snags and mitigate them before engaging in work.** Some of these snags are not visible from roads but could easily reach you if they fall. Flag and communicate snag locations to incoming personnel.*

**Hydration:** *Hot temperatures are predicted for today. Remember to pre-hydrate in the morning hours. Drink plenty of water and mix in a sports drink throughout the day. Take breaks as needed in the shade. Watch for heat related illness (IRPG page 109 and 110).*

**Watch Out**

7. NO COMMUNICATION LINK WITH CREW MEMBERS/SUPERVISOR

- Bees, Wasps & Yellow Jackets**
- Find out who has allergies to bees and who might need epi-pens.
  - Watch for bees and yellow jackets in nests above and below the ground.
  - If stung, alert medical personnel.
  - If an allergic reaction occurs, treat this as a medical emergency.
- Medical Emergency**
- Follow the IAP medical plan
  - The incident medical response plan is also in the IRPG on pages 118-119.
  - Identify IC for the emergency and contact communications.
  - Make sure everyone understands the IWI process.

**Safety Officers:** Safety Officers: Paul Churchill, Buddy Kelley, Jeff Henderson (T), Shawn Duggar, Larry Holsomback, and Brandon Hughes (T), Steve Gray



## INCIDENT SAFETY ANALYSIS 215a

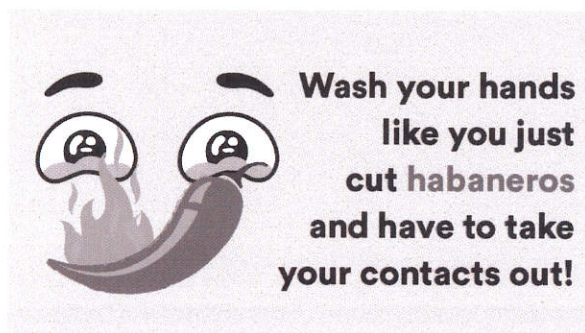
West Lolo Complex- Saturday, August 14, 2021

| 8. Location | 9. Hazard                   | 6. Control or Abatement Action (Engineering, Administrative, PPE, Avoidance, Education, etc)  |
|-------------|-----------------------------|---|
| Incident    | Air Operations              | <ul style="list-style-type: none"> <li>~ Avoid transfer of risk from ground to aviation resources.</li> <li>~ Utilize safe and effective strategy and tactics. Involve pilot in mission planning. Conduct thorough risk assessment prior to mission.</li> <li>~ Stress to managers and pilots the need to slow down and ensure appropriate tempo.</li> <li>~ Performance planning is completed for environmental conditions. Ensure pilot is trained, experienced and qualified/carded for mission.</li> <li>~ Ensure All aviation operations are integrated and coordinated into incident aviation operations</li> <li>~ Build in contingencies to aircraft limitations. Extended medivac times etc.</li> <li>~ Ensure positive communication with all air resources.</li> </ul> |
| Fireline    | Firing Operations & Devices | <ul style="list-style-type: none"> <li>~ Only personnel trained in the use of each device will be authorized to use firing equipment.</li> <li>~ Ensure all personnel are aware of firing operation that may affect them.</li> <li>~ Wear appropriate PPE.</li> <li>~ Ensure aerial/ground ignition plans have been developed and personnel are briefed.</li> </ul>   |
| Incident    | Fatigue & Over Exertion     | <ul style="list-style-type: none"> <li>~ Drink 1 quart of water each hour during and after work.</li> <li>~ Rotate crews out of smoky areas.</li> <li>~ Set a reasonable work pace and allow adequate rest breaks while on the project.</li> <li>~ Stagger work crews start time to limit fatigue.</li> <li>~ Use buddy system to monitor personnel of heat related and fatigue issues.</li> <li>~ Follow work / rest guidelines.</li> </ul>  |
| Fireline    | Heavy Equipment Operations  | <ul style="list-style-type: none"> <li>~ Provide daily safety briefings to remind about heavy equipment hazards. Always maintain working space.</li> <li>~ Establish traffic control along roadways. Ensure communications are established with operators.</li> <li>~ Identify and communicate hazards in the working area (traffic, power lines, culverts, etc)</li> <li>~ Maintain awareness of specific roadway hazards for heavy equipment</li> </ul>   |
| Incident    | Personal Hygiene / Covid 19 | <ul style="list-style-type: none"> <li>~ Adhere to local, agency and IMT policy and direction to prevent spread of virus. Educate incident personnel in policy and practices.</li> <li>~ Obtain proper care for those effected and ensure proper reporting procedures of illness are followed.</li> <li>~ Ensure self assessments, social distancing, face coverings and personal hygiene.</li> <li>~ Encourage anyone with potential symptoms notifies supervisor immediately.</li> <li>~ Don't share personal items such as water bottles communication devices and utensils.</li> <li>~ Wash hands before meals, and after use of rest room facilities. Follow with handsanitizer.</li> </ul>  |
| Incident    | Wildlife & Livestock        | <ul style="list-style-type: none"> <li>~ Provide training on wildlife hazards to all fireline personnel (Moose / Bear/ Buffalo)</li> <li>~ Provide daily reminders of wildlife hazards to all personnel to maintain awareness.</li> <li>~ Ensure personnel are comfortable with use of bear spray (if available) and other deterrents</li> <li>~ Provide guards and other precautions as conditions warrant.</li> </ul>   |
| Fireline    | Night Operations            | <ul style="list-style-type: none"> <li>~ Maintain high visibility in work area and wear vest while in roadway.</li> <li>~ Use glow sticks to mark hazards.</li> <li>~ Ensure personnel have a personal light (headlamp).</li> <li>~ Watch for signs of fatigue.</li> <li>~ Take breaks away from areas of known hazard.</li> </ul>  |

## INCIDENT SAFETY ANALYSIS 215a

|          |  |  |
|----------|--|--|
| Incident | Incident Camp                            | <ul style="list-style-type: none"> <li>~ Be aware of camp medical and evacuation plans</li> <li>~ Wear closed toe footwear with acceptable support. Be aware of potential for uneven footing and loose rocks. Wear PPE as required for assigned tasks.</li> <li>~ Loading and carrying: lift with legs, not back. Ask for assistance or use cart / dolly if needed.</li> <li>~ Drive slowly. Max 5 MPH. Signal, watch for pedestrian traffic.</li> <li>~ When Backing: Use a Spotter.</li> <li>~ Use chock blocks, especially if parked on uneven ground. DO NOT drive or park in sleeping areas.</li> <li>~ Guy ropes and stakes: flag / mark with fluorescent lighting.</li> <li>~ Be Aware of "Widow Makers" in camp and sleeping area. Do not camp under hazards</li> <li>~ Personal Hygiene: Wear Masks, Distance, Wash hands after toilet use and prior to eating.</li> <li>~ Stay active, stretch and walk around often. DO NOT set all shift. Remember Ergonomics.</li> <li>~ Be Aware there may be Snakes, Insects and other live hazards in camp.</li> <li>~ Alcohol and / or Illegal drugs are prohibited in camp.</li> </ul> |
| Incident | Heat Related Illness (HRI) & Dehydration | <ul style="list-style-type: none"> <li>~ Refer to Heat Related Illness information, IRPG Pg 109</li> <li>~ Drink Fluids throughout operational period (6-8 qts/shift).</li> <li>~ Maintain water/electrolyte ratio of 3 to 1.</li> <li>~ Carry extra water on line and cache water at drop points.</li> <li>~ Take Frequent breaks, minimum of 10 minutes every hour.</li> <li>~ Allow out of area resources time to acclimatize before expecting peak performance.</li> <li>~ Recognize symptoms of HEAT RELATED ILLNESS which include:               <ul style="list-style-type: none"> <li>o Lack of energy</li> <li>o Headaches, dizziness</li> <li>o Lack of rest</li> <li>o No hunger, poor eating habits</li> <li>o Hot skin, and lack of sweating</li> </ul> </li> </ul>   |
| Fireline | Indirect Fireline                        | <ul style="list-style-type: none"> <li>~ Post lookouts, identify escape routes and safety zones IRPG Pg. 7</li> <li>~ Review "Strategy Direct/Indirect Attack" IRPG Pg. 82-83</li> <li>~ Refer to "Line Location" IRPG Pg 84</li> </ul>  |
| Incident | Severe Weather                           | <ul style="list-style-type: none"> <li>~ Through daily safety briefings remind of "Thunderstorm Safety" guidelines</li> <li>~ Establish "Trigger Points" to withdraw, and ensure all know rally site.</li> <li>~ Communicate "Risk Management" process to determine retreat criteria and actions</li> <li>~ Develop strategy and tactics based on predictions to limit hazards and personnel exposure to hazard</li> <li>~ Work with Logistics to find locations to stage resources to prevent exposure to elements to reduce health issues.</li> <li>~ Ensure all personnel are aware of deference between Weather Watch and Warning</li> </ul>   |
| Incident | Bees, Ticks, Mosquitoes                  | <ul style="list-style-type: none"> <li>~ Identify personnel with known allergic reactions to stings.</li> <li>~ Provide repellants and nets to prevent stings</li> <li>~ Ensure crew members have medication / EPI pens if needed and others on crew are aware of storage location(s) and how to use.</li> <li>~ Establish inter-crew Incident within Incident process to expedite medical response to allergic fireline personnel.</li> </ul>   |
| Incident | Firefighter & Public Smoke Exposure      | <ul style="list-style-type: none"> <li>~ Refer to "Smoke Hazards and Mitigation" IRPG Pg 30</li> <li>~ Use warning lights and provide traffic control on roadways during smoky and night operations.</li> <li>~ Rotate crews out of smoky areas during firing and mop-up operations.</li> <li>~ Contact Communications when firing operations are initiated.</li> </ul>  |
| Fireline | Structure Protection & HAZMAT            | <ul style="list-style-type: none"> <li>~ Review "Wildland Urban Interface Firefighting" considerations, IRPG Pg 12-16</li> <li>~ Use "Structure Assessment" checklist, IRPG Pg 13</li> <li>~ Refer to "Structure Hazard Marking System" IRPG Pg 41</li> <li>~ Follow "HAZMAT Incident Operations" IRPG Pg 36</li> </ul>  |
| Fireline | ATV/UTV use                              | <ul style="list-style-type: none"> <li>~ Ensure equipment is inspected and safe to use.</li> <li>~ Restrict UTV's to max width of 50" on ATV trails due to width and severe out sloped conditions.</li> <li>~ Ensure operator is trained and certified to operate.</li> <li>~ Ensure operator has proper PPE according to the Redbook and/or RMA.</li> <li>~ Question if it is mission critical.</li> </ul>  |

# COVID Mitigations and Screening Tool



## **Maintain Situational Awareness of The Fire Environment: 10 & 18, LCES**

- Monitor each other, watch for symptoms (Firefighter Health Screening Tool).
- Never share PPE, UTV & flight helmets, radios, or other equipment
- Implement daily decontamination procedures of apparatus and equipment
- Adjust operational periods to allow for additional COVID-19 logistics.
- Plan for overnight lodging/camping/feeding scenarios that maintain separation from other fire personnel and community

## **WILDLAND FIRE COVID-19 SCREENING TOOL**

---

Today or in the past 24 hours, have you had any of the following symptoms<sup>1</sup>?

| Symptom   |
|---|
| Cough more than expected?   |
| Shortness of breath or difficulty breathing?                        |
| Fever? Chills?  |
| Muscle pain, outside your normal for firefighting?                  |
| Sore throat?  |
| New loss of taste or smell?   |
| Fatigue, outside your normal for firefighting?                      |
| Headache, outside your normal for firefighting?                     |
| Congestion or runny nose, outside your normal for firefighting?     |
| Nausea or vomiting  |
| Diarrhea  |
| <i>* Take temperature with no-touch thermometer, if available *</i> |



## MEDICAL PLAN (ICS 206)

| <b>1. Incident Name:</b> West Lolo Complex  |  | <b>2. Operational Period:</b> Date:08-14-21 Time: 0630-2130 |   |                                  |  |   |   |
|---|--|---|---|----------------------------------|--|---|---|
| <b>3. Medical Aid Stations:</b>   |  |   |   |                                  |  |   |   |
| <b>Name</b>   | <b>Location</b>                            | <b>Contact Number(s)/Frequency</b>                          | <b>Paramedics on Site?</b>                                |                                  |  |   |   |
| Jeff Cummings (EMTB\MEDL)   | ICP  | 317-730-6653  | <input type="checkbox"/> Yes <input type="checkbox"/> No  |                                  |  |   |   |
| Scott Phillips (EMPF\MEDL)  | ICP  | 602-300-2156  | <input type="checkbox"/> Yes <input type="checkbox"/> No  |                                  |  |   |   |
| Sherri McDougal (AEMTF\MEDL (t))  | ICP  | 715-783-0075  | <input type="checkbox"/> Yes <input type="checkbox"/> No  |                                  |  |   |   |
| Tim Higeons (EMTF)  | C/Z  | 918-230-8844  | <input type="checkbox"/> Yes <input type="checkbox"/> No  |                                  |  |   |   |
| Skyler Wiemokly (EMTPF)   | C/Z  | 406-546-1622  | <input type="checkbox"/> Yes <input type="checkbox"/> No  |                                  |  |   |   |
| Carl Joyce, (EMTF)  | Div/Night                                  | 303-717-8249  | <input type="checkbox"/> Yes <input type="checkbox"/> No  |                                  |  |   |   |
| REMS-1 EMS Team   | N  | 415-637-0591  | <input type="checkbox"/> Yes <input type="checkbox"/> No  |                                  |  |   |   |
| <b>4. Transportation:</b> (indicate air or ground):   |  |   |   |                                  |  |   |   |
| <b>ON SCENE AMBULANCE</b>   |  |   |   |                                  |  |   |   |
| <b>Ambulance Service</b>  | <b>Location</b>                            | <b>Phone Number(s)/Frequency</b>                            | <b>EMS Level</b>  |                                  |  |   |   |
| Fireline Ambulance  | ICP  | 205-764-8466  | <input type="checkbox"/> ALS <input type="checkbox"/> BLS |                                  |  |   |   |
| In-Area Ambulance Services  |  |   |   |                                  |  |   |   |
| <b>Air Ambulance Service</b>  | <b>Location</b>                            | <b>Number(s)/Frequency</b>                                  | <b>EMS Level</b>  |                                  |  |   |   |
| Two Bears Air   | Flathead, Mt                               | 406-758-5610  | <input type="checkbox"/> ALS <input type="checkbox"/> BLS |                                  |  |   |   |
| Life Flight Network   | Missoula, Mt                               | 911 or through the MIDC                                     | <input type="checkbox"/> ALS <input type="checkbox"/> BLS |                                  |  |   |   |
| <b>5. Hospitals:</b>  |  |   |   |                                  |  |   |   |
| <u>Hospital Name</u>  | <u>Address</u>                             | <u>Contact Number</u>                                       | <u>Travel Time</u>  |                                  | <u>Trauma Center</u>                     | <u>Burn Center</u>  | <u>Helipad</u>  |
|   |  |   | Air   | Ground                           |  |   |   |
| Clark Fork Valley   | 10 Kruger Rd, Plains Mt 59859              | 406-826-4875  | n/a   | 5 min                            | <input type="checkbox"/> Yes<br>Level: 4 | <input type="checkbox"/> Yes<br><input type="checkbox"/> No | <input type="checkbox"/> Yes <input type="checkbox"/> No    |
| St. Patrick's Hospital  | 500 W Broadway, Missoula, Mt 59859         | 406-543-7271  | 25 min  | 90 min                           | <input type="checkbox"/> Yes<br>Level: 2 | <input type="checkbox"/> Yes<br><input type="checkbox"/> No | <input type="checkbox"/> Yes<br><input type="checkbox"/> No |
| Sacred Heart Hospital   | 101 W 5 <sup>th</sup> , Spokane, WA, 99204 | 509-474-3131  | 50 min  | 150 min                          | <input type="checkbox"/> Yes<br>Level: 1 | <input type="checkbox"/> Yes<br><input type="checkbox"/> No | <input type="checkbox"/> Yes <input type="checkbox"/> No    |
| University of Utah Burn Center  | 50 N Medical Dr, Salt Lake City, UT        | 801-581-2700  | 300 min   | 540 min                          | <input type="checkbox"/> Yes<br>Level: 1 | <input type="checkbox"/> Yes<br><input type="checkbox"/> No | <input type="checkbox"/> Yes <input type="checkbox"/> No    |
| <b>6. Special Medical Emergency Procedures:</b>   |  |   |   |                                  |  |   |   |
| <ul style="list-style-type: none"> <li>• Patient or nearest responder notifies Group Supervisor who will respond to the scene and become the "incident within an incident" (IWI) commander.</li> <li>• Group Supervisor will notify nearest medical responder and ICP-Communications of the incident</li> <li>• <b>Use the "8 Line" report attached to the back of this IAP or page 108 of the IRPG.</b></li> <li>• <b>ER Only! Urgent Care</b> is for <b>non-Life-threatening</b> medical care, can only be reached by ground transport. <b>Hours of operations: 24/7</b></li> </ul> |  |   |   |                                  |  |   |   |
| <b>7. Prepared by (MEDL):</b> Sherri McDougal, MEDL(t) Signature: <i>Sherri McDougal</i> Jeff Cummings, MEDL Signature: <i>Jeff Cummings</i>  |  |   |   |                                  |  |   |   |
| <b>8. Approved by (SOF2Paul Churchill</b> Signature: <i>/s/ Paul Churchill</i>  |  |   |   |                                  |  |   |   |
| <b>ICS 206</b>  |  | <b>IAP Page</b>   |   | <b>Date/Time:</b> 8/13/21 @ 1700 |  |   |   |
| <b>Aviation Response Plan</b>   |  |   |   |                                  |  |   |   |
| <ol style="list-style-type: none"> <li>1. Evaluate patient for Code Green-Yellow-Red per Medical Incident Report 8 Line</li> <li>2. Contact Two Bears Air for hoist capable mission</li> <li>3. Move patient to extraction point for extraction</li> <li>4. If necessary, ground-transport patient off fire-line to airport in Plains Mt for intercept with LifeFlight</li> </ol>   |  |   |   |                                  |  |   |   |

### Helicopter Landing Zones

| Landing Zone: | Coordinates:                    | Landing Zone: | Coordinates: |
|---------------|---------------------------------|---------------|--------------|
| H5/DP16 Zulu  | Lat 47°36.338' Long 155°18.675' |               |              |
|               |                                 |               |              |

| INCIDENT RADIO COMMUNICATIONS PLAN |               | Incident Name<br>WEST LOLO COMPLEX          |             | Date/Time Prepared<br>8/13/21 | Operational Period Date/Time<br>8/14/21 0600 - 8/15/21 0600 |             |          |        |             |                   |                         |
|------------------------------------|---------------|---|-------------|-------------------------------|---|-------------|----------|--------|-------------|-------------------|-------------------------|
| Ch #                               | Function      | Channel Name/Trunked Radio System Talkgroup | Assignment  | RX Freq                       | N or W  | RX Tone/NAC | TX Freq  | N or W | TX Tone/NAC | Mode<br>A, D or M | Remarks                 |
| 1                                  | TACTICAL CHNL | TAC 1                                       | W LOLO FIRE | 168.0500                      |   | 136.5       | 168.0500 |        | 136.5       | A                 | NIGHT                   |
| 2                                  | TACTICAL CHNL | TAC 2                                       | W LOLO FIRE | 168.2000                      |   | 136.5       | 168.2000 |        | 136.5       | A                 | STRUCTURE               |
| 3                                  | TACTICAL CHNL | TAC 3                                       | W LOLO FIRE | 168.6000                      |   | 136.5       | 168.6000 |        | 136.5       | A                 | THORNE ECHO             |
| 4                                  | TACTICAL CHNL | TAC 4                                       | W LOLO FIRE | 166.7250                      |   | 136.5       | 166.7250 |        | 136.5       | A                 | THORNE JULIET           |
| 5                                  | TACTICAL CHNL | TAC 5                                       | W LOLO FIRE | 166.7750                      |   | 136.5       | 166.7750 |        | 136.5       | A                 | THORNE NOVEMBER         |
| 6                                  | TACTICAL CHNL | TAC 6                                       | W LOLO FIRE | 168.2500                      |   | 136.5       | 168.2500 |        | 136.5       | A                 | THORNE CHARLIE / ZULU   |
| 7                                  | NIFC CMD RPT  | CMD 4                                       | W LOLO FIRE | 170.0000                      |   | 136.5       | 166.6750 |        | 136.5       | A                 | EDDY PEAK / THORNE RPT  |
| 8                                  | NIFC CMD RPT  | CMD 11                                      | W LOLO FIRE | 170.6875                      |   | 136.5       | 166.5750 |        | 136.5       | A                 | PRISCILLA PEAK / THORNE |
| 9                                  | NIFC CMD RPT  | C 36  | W LOLO FIRE | 171.0625                      |   | 136.5       | 163.8250 |        | 136.5       | A                 | COUGAR PEAK / THORNE    |
| 10                                 | NIFC CMD RPT  | C 41  | W LOLO FIRE | 171.8375                      |   | 136.5       | 165.3875 |        | 136.5       | A                 | RICHARDS PEAK / THORNE  |
| 11                                 | AIR/GND PRI   | A/G PRI                                     | W LOLO FIRE | 167.9000                      |   |             | 167.9000 |        |             | A                 | AIR/GROUND PRIMARY      |
| 12                                 | A/GND SEC     | A/G SEC                                     | W LOLO FIRE | 168.2875                      |   |             | 168.2875 |        |             | A                 | AIR/GROUND SECONDARY    |
| 13                                 | FS REPEATER   | EDDY  |             | 172.3875                      |   | \$F7E       | 164.1750 |        | \$526       | D                 | LINKED TO MSO DISPATCH  |
| 14                                 | RED           | RED   |             | 154.0700                      |   |             | 154.0700 |        | 156.7       | A                 | MUTUAL AID              |
| 15                                 | TAN           | VMED 28                                     |             | 155.3400                      |   |             | 155.3400 |        | 156.7       | A                 | MED A/G PRI             |
| 16                                 | AIR GUARD     | AIR GUARD                                   |             | 168.6250                      |   |             | 168.6250 |        | 110.9       | A                 | AIR GUARD               |

Prepared by (Communications Unit)  
**W LOLO COMMS 720-428-0546 / COM1-T HERRING 505-328-3896**

Incident Location LOLO NF, CONTROLLED UNCLASSIFIED INFORMATION//BASIC  
 County State MT Latitude Longitude N W

The convention calls for frequency lists to show four digits after the decimal place, followed by either an "N" or a "W", depending on whether the frequency is narrow or wide band. Mode refers to either "A" or "D" indicating analog or digital (e.g. Project 25) or "M" indicating mixed mode. All channels are shown as if programmed in a control station, mobile or portable radio. Repeater and base stations must be programmed with the Rx and Tx reversed.

## Finance Message

CTRs/Shift Ticket – Please use the QR code below for Shift tickets, CTRs, Emergency Fuel and Oil, and General Messages for finance. You can also take a photo of a signed hard copy shift ticket or CTR. Make sure your photos are legible and the supervisor signature is visible. Include your phone number in the comments in case we have questions.

Document the reason for Hazardous Pay in the comments on the CTR.

Last working day – please contact finance two days prior to your demob day.

Send your CTRs and Shift Tickets to the finance email below. Please label all finance emails with your resource number.

[2021.westlolo.finance@firenet.gov](mailto:2021.westlolo.finance@firenet.gov)

If you are an AD please send your casual hire form to the email address above.



# Finance Remote Processing Procedures

To the right is access to electronic Finance forms. You can access them via the QR code or the URL. On each form are four buttons PRINT, RESET, SAVE and EMAIL. You can complete these forms on your cell phone, tablet or laptop. They are Adobe PDF forms so you will need a PDF reader app on your device. The forms were created on a laptop so the commands in your cell phone and tablet do not allow for the Save and Print functions to work. You will need to use your app's functionality to Save or Print.

Once you have completed the appropriate form for your resource please email to your supervisor for approval.

Supervisors can use their app to apply a signature or just type /s/ your name on the approval line. After approving please email the approved form back to the resource for their record and to the finance email with your resource number in the subject line:  
[2021.westlolo.finance@firenet.gov](mailto:2021.westlolo.finance@firenet.gov)

Resources: Please send photos or electronic copies of Casual hire forms, contracts, Cooperative agreements, Vehicle inspection, Manifests and resource orders to the finance email with your resource number in the subject line:  
[2021.westlolo.finance@firenet.gov](mailto:2021.westlolo.finance@firenet.gov)

Crew Time  
Report



Shift Ticket



Emergency Fuel  
and Oil Ticket



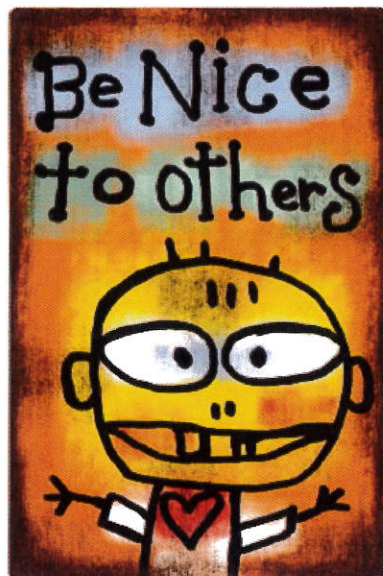
General  
Message





# HUMAN RESOURCE MESSAGE

*There is zero tolerance for drugs or alcohol on this fire incident.*



Hello!

I am Debby Hassel, the Northern Rockies HRSP GAC Coordinator. I will be your HRSP (*virtual*) on this fire.

If you have any issues, problems, or just want to talk, please call, or text, or email me. I will be glad to talk with you!

**And remember... *Be nice to others!***

\*\*\*\*\*

Debby Hassel, HRSP (979) 255-5513

[hrrspfire@gmail.com](mailto:hrrspfire@gmail.com)



## Southern Area Incident Management Gold Team Fire Information



<https://inciweb.nwcg.gov/incident/7620>



<https://www.facebook.com/WestLoloComplex/>

Web: <https://www.fs.usda.gov/main/lolo/home>

Fire Information Line: 208-274-9674 (8 a.m. – 8 p.m.)

**We are guests in this area.** Be aware that photos posted to personnel accounts may contain sensitive information. Send all photos through Information Officer to ensure they are appropriate and represent the Gold Team and our partners well. Personal protective equipment is required in any photos that will be used to tell the story of the fire.



## 5 DAY DEMOB PLANNER

If you are on this list or not on this list in error, or a date is wrong, please ask your incident supervisor to get in touch with Demob.

| DEMOB DATE | REQ # | RESOURCE NAME                 | KIND | TRV | CITY          | STATE |
|------------|-------|-------------------------------|------|-----|---------------|-------|
| 08/14/2021 | C-51  | LAVA RIVER FOR. LAVA 5        | HC2  | POV | ONTARIO       | OR    |
| 08/14/2021 | E-163 | SUPERIOR VFD                  | WTS2 | AOV | SUPERIOR      | MT    |
| 08/14/2021 | O-268 | CRAFT, KASEY                  | LSC3 | AOV | PLAINS        | MT    |
| 08/14/2021 | O-339 | HEPPNER, STEVE                | SOF1 | REN | HELENA        | MT    |
| 08/14/2021 | O-345 | FERRUCCI, MARGIE              | PIO2 |     | WILHOIT       | AZ    |
| 08/14/2021 | O-347 | MOLINE, ANYA                  | RESL | POV | BUTTE         | MT    |
| 08/14/2021 | O-348 | HEISELMANN, ERIN              | GISS | POV | MISSOULA      | MT    |
| 08/14/2021 | O-351 | ECK III, ROBERT C             | ITSS | POV | KALISPELL     | MT    |
| 08/15/2021 | E-39  | BIGFOOT SKG1                  | SKG1 | POV | LIBBY         | MT    |
| 08/15/2021 | E-79  | IVANOFF CONTRACTIN            | WTS2 | POV | ARLEE         | MT    |
| 08/15/2021 | E-153 | WILDFIRE RESOURCES            | WTS2 | POV | HAMILTON      | MT    |
| 08/15/2021 | E-157 | WELLINGTON FPD                | ENG6 | AOV | WELLINGTON    | CO    |
| 08/15/2021 | O-277 | MCCORMICK, AIDAN              | EQPM | AIR | LARAMIE       | WY    |
| 08/15/2021 | O-278 | OTTERNESS, STEVE R            | FDUL | POV | SEDALIA       | CO    |
| 08/15/2021 | O-296 | MAXWELL, SCOTT FREDRICK       | TFLD | AOV | CARLSBAD      | NM    |
| 08/15/2021 | O-332 | MACIEL, ANTHONY E             | TFLD | AOV | SONORA        | CA    |
| 08/15/2021 | O-337 | BEMELN, MARK ANTHONY          | COMT | REN | DENVER        | CO    |
| 08/15/2021 | O-340 | COMBS, BRIAN                  | RADO | POV | LAKEWOOD      | CA    |
| 08/15/2021 | O-342 | DITOLLA, MICHAEL ALLEN        | INCM | REN | DENVER        | CO    |
| 08/15/2021 | O-361 | PASKI, SARAH THERESA          | RCDM | AR  | ATLANTA       | GA    |
| 08/15/2021 | O-370 | REUSE, RICHARD D              | PIO2 |     | RICHMOND      | VA    |
| 08/16/2021 | E-5   | TRUELINE MECHANIC             | MEC  | POV | PLAINS        | MT    |
| 08/16/2021 | E-16  | VIC RONCK                     | PU   | POV | MISSOULA      | MT    |
| 08/16/2021 | E-122 | PLAINS RFD WT-196             | WTS2 | OTH | PLAINS        | MT    |
| 08/16/2021 | E-128 | GOLDER RANCH FIRE DISTRICT    | ENG6 | AOV | TUCSON        | AZ    |
| 08/16/2021 | E-155 | SMOKEY BEAR RD                | ENG6 | AOV | CAPITAN       | NM    |
| 08/16/2021 | O-336 | DUFFY, BRYAN                  | DIVS | AOV | TULARE        | CA    |
| 08/16/2021 | O-393 | GILBERT, JUSTIN               | HEBM | REN | GRANGEVILLE   | ID    |
| 08/16/2021 | O-470 | HOPKINS JR, MARK THOMAS       | HMGB | AR  | PENSACOLA     | FL    |
| 08/17/2021 | E-17  | ROBERT CHITTY - 19 DODGE      | PU   | POV | MISSOULA      | MT    |
| 08/17/2021 | E-27  | MATT KENWORTHY                | PU   | POV | DILLON        | MT    |
| 08/17/2021 | E-30  | RAYMOND BROSSMAN              | PU   | POV | LIBBY         | MT    |
| 08/17/2021 | E-134 | DARIN SMITH                   | PU   | POV | SEELEY LAKE   | MT    |
| 08/17/2021 | O-19  | ALTMILLER, KARA CHRISTINE     | PTRC | POV | PLAINS        | MT    |
| 08/17/2021 | O-27  | HASSEL, DEBRA M               | HRSP | POV | HAMILTON      | MT    |
| 08/17/2021 | O-32  | MILLER CREEK<br>REFORESTATION | FMOD | POV | MISSOULA      | MT    |
| 08/17/2021 | O-287 | WHITENER, DAVID L             | HMGB | AOV | DAYTONA BEACH | FL    |
| 08/17/2021 | O-320 | PHILLIPS, SCOTT W             | EMPF | REN | PHOENIX       | AZ    |
| 08/17/2021 | O-326 | WIEMOKLY, SKYLER              | EMPF | POV | MISSOULA      | MT    |
| 08/17/2021 | O-328 | JUDY, DANIEL                  | EMTF | POV | MISSOULA      | MT    |
| 08/17/2021 | O-354 | VIENGHAM, KHON                | COST | AR  | WASHINGTON DC | DC    |
| 08/17/2021 | O-367 | MONTANA NATIONAL              | SEC1 | AOV | HELENA        | MT    |
| 08/17/2021 | O-385 | BEDBURY, ROYCE MICHAEL        | HECM | AR  | ROANOKE       | VA    |
| 08/17/2021 | O-392 | BROWN, DANIEL SCOTT           | INCM | POV | EMIGRANT      | MT    |
| 08/17/2021 | O-415 | DRENNAN, CHARLES R            | COMT | REN | DENVER        | CO    |
| 08/18/2021 | C-25  | R & R CONTRACTING             | HC2  | POV | WENATCHEE     | WA    |
| 08/18/2021 | E-19  | WALTER MANULA                 | PU   | POV | DILLON        | MT    |
| 08/18/2021 | E-26  | MATT KENWORTHY                | PU   | POV | REXBURG       | ID    |
| 08/18/2021 | E-126 | HART VENTURES, INC.           | ENG6 | POV | LOLO          | MT    |
| 08/18/2021 | E-164 | ST. REGIS VOL. FD             | WTS3 | AOV | ST REGIS      | MT    |
| 08/18/2021 | E-186 | WOLF ROCK                     | ENG6 | POV | MASON         | NH    |
| 08/18/2021 | E-187 | EAST MISSOULA VFD - E 516     | ENG6 | AOV | MISSOULA      | MT    |
| 08/18/2021 | E-188 | ROCKY MOUNTAIN FIRE           | ENG3 | POV | CHARLO        | MT    |
| 08/18/2021 | O-250 | CAVILL, TATE W                | DIVS | AOV | PLAINS        | MT    |
| 08/18/2021 | O-321 | BRISKE, ERIK                  | SEC1 | AOV | LAS CRUCES    | NM    |
| 08/18/2021 | O-359 | BURKHALTER, JAMES WILLIAM     | INCM | REN | ARVADA        | CO    |
| 08/18/2021 | O-387 | KIEFFER, BRANDEN S            | SEC1 | AOV | SEARCY        | AK    |
| 08/18/2021 | O-397 | ARTIGA, ARMANDO               | SEC1 | AOV | LOS ANGELES   | CA    |
| 08/18/2021 | O-414 | ELMORE, BRENT                 | SPUL | POV | CAMP CROOK    | SD    |
| 08/18/2021 | O-419 | SENE, DUSTIN S                | COML | POV | GARDINER      | MT    |
| 08/18/2021 | O-432 | KALINA, MAX STEVEN            | ARCH | AOV | TROY          | MT    |

## Steps in the Demob process

- **Note your demob date listed in the IAP and inform your incident supervisor if that date is wrong so they can contact demob to update.**
- **If you need an airline flight, USE THE QR code below and call or email demob to schedule a flight at least 3 days before your demob date. You will likely need to demob on your last work day to drive to Missoula or other departure cities to fly on your demob date.**
- Return all accountable property to the Supply Unit, and/or Communications.
- Have equipment inspected at Ground Support and go through Weed Wash.
- Submit CTRs/Shift Tickets and FINALIZE your OF-288/OF-286 .
- Scan the QR code below to provide travel info if Driving. **We need you to provide your ETD/ETA, and RON city, if taking more than one day to drive home.**

**Demob Contact:** Jeff DeMatteis, 720-441-8211

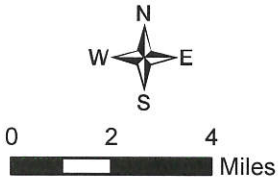
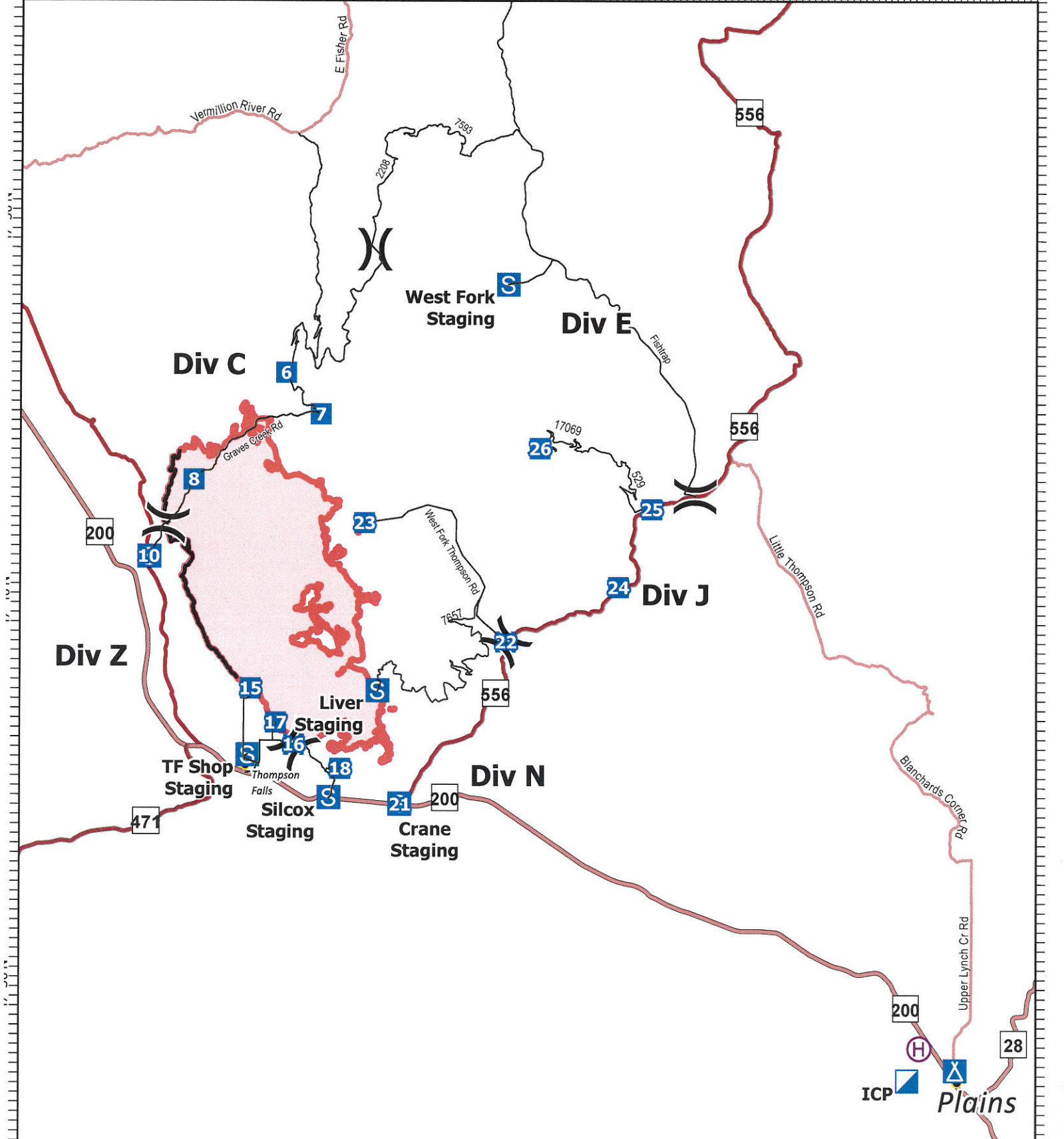
Email: [2021.westlolo.demob@firenet.gov](mailto:2021.westlolo.demob@firenet.gov)

QR Code for Air Travel



QR Code for Driving





Created by: SA Gold Team  
 8/13/2021 1655  
 North American 1983 Datum, LatLong Grid

# IAP Map

West Lolo Complex  
 MT-LNF-000893  
 8/14/2021 Day

23734 acres at 8/12/21 @ 2300

- Wildfire Daily Fire Perimeter
- Contained Line
- Helibase
- Division Break
- Incident Command Post
- Drop Point
- Camp
- Staging Area



**Gold Team Phone List - 8/14/2021**

| Position                       | Name              | Phone        | Position                           | Name                    |
|--------------------------------|-------------------|--------------|------------------------------------|-------------------------|
| <b>COMMAND</b>                 |                   |              |                                    |                         |
| Incident Commander             | Debbie Beard      | 850-524-9966 | Chief                              | Jessica Hollingsworth   |
| Liaison Officer                | Michael Wright    | 970-819-2890 | Chief                              | Carol O'Bryan           |
| Liaison Officer (t)            | Robert Claybrook  | 859-490-0653 | Chief                              | Thomas Barrett - v      |
| Liaison Officer (t)            | Jeffrey Gardner   | 706-260-6296 | Chief (t)                          | Kelly Russell           |
| Covid Coordinator (t)          | Bradley Cooper    | 318-451-5074 | Resource Unit Leader               | Melonie Sellers         |
| Public Information Officer     | Michelle Burnett  | 803-920-6167 | Resource Unit Leader               | Aerin Land              |
| Public Information Officer     | Andrew Gray - v   | 850-797-4824 | Resource Unit Leader (t)           | Jocelyn Howell          |
| Public Information Officer (t) | Cathryn Dowd -v   | 828-412-1521 | Status Check-In Recorder (t)       | Kenneth Parker          |
| Public Information Officer (t) | Emily Cleaver - v | 931-436-0080 | Situation Unit Leader              | Terry Bowerman          |
| Public Information Officer (t) | Brook Smith       | 865-603-5217 | Incident Technology Supt Splst     | Rusty Brown - v         |
| Public Information Officer (t) | Tricia Boles      | 606-627-5398 | Incident Technology Supt Splst     | Kevin Curry - v         |
| Public Information Officer (t) | Ray Butler        | 865-250-8980 | Incident Technology Supt Splst (t) | Joshua Skidmore         |
| Public Information Officer (t) | Kari Hines        | 512-375-0354 | GIS Specialist                     | Ethan Robertson         |
| Public Information Officer (t) | Ginelle Heller    | 404-782-9894 | GIS Specialist (t)                 | Clayton Cooley          |
| Safety Officer                 | Paul Churchill    | 843-259-9884 | Fire Behavior Analyst              | Kelly Cagle             |
| Safety Officer                 | Richard Kelley    | 850-447-1344 | Demobilization Unit Leader         | Jeff DeMatteis          |
| Safety Officer                 | Shawn Dugger      | 850-508-7736 | Training Specialist                | Robbie Hollingsworth -v |
| Safety Officer (t)             | Jeffery Henderson | 479-518-3162 |                                    | 601-300-1396            |
| <b>OPERATIONS</b>              |                   |              |                                    |                         |
| Chief                          | Jeffrey Schardt   | 706 280-5498 | Chief                              | Cameron Crisp           |
| Chief                          | Steve Gray        | 770-655-8002 | Chief                              | Thomas Philipps         |
| Chief/plannint                 | Shawn Nagle       | 662-231-4024 | Chief (t)                          | Mark Eaton              |
| Chief                          | Loy Elam          | 336-467-7254 | Supply Unit Leader                 | Lemuel Cooksey          |
| Chief field                    | Josh Graham       | 501-545-3088 | Communications Unit Leader         | George Rosenthal        |
| Chief                          | C Bertram Plante  | 252-475-4662 | Communications Unit Leader (t)     | Shannon Herring         |
| Chief (t)                      | Kevin Grodi       | 775-385-0098 | Ordering Manager                   | Sherrri Kite - v        |
| Chief (t) field                | Matthew Johnson   | 870-415-0185 | Ordering Manager                   | Leigh Ostin             |
| DIVS                           | Greg Salansky     | 865-414-6461 | Ground Support Unit Leader         | Todd Waller             |
| DIVS                           | Jason Klawinsky   | 936-520-8827 | Medical Unit Leader                | Jeff Cummings           |
| DIVS                           | Heath Thomas      | 479-667-2191 | Medical Unit Leader (t)            | Sherrri McDougal        |
| DIVS                           | Jared Nobles      | 352-625-2520 | Facilities Unit Leader (t)         | John Dunlap             |
| DIVS                           | Daniel Gore       | 478-456-8516 | Receiving/Distribution Manager     | Alaric Vince Mullins    |
| DIVS (t)                       | Matthew Moe       | 928-220-0043 | Receiving/Distribution Manager (t) | Randall Hamilton        |
| DIVS (t)                       | Brenton Holt      |              | Security Manager                   | Greg Blanks             |
| <b>AIR OPERATIONS</b>          |                   |              |                                    |                         |
| Air Operations Branch Dir      | Larry Trapp       | 307-320-6566 | Chief                              | Jason Gillis            |
| Air Tactical Group Supervisor  |                   |              | Chief (t)                          | Laura Wilson            |
| Helibase Manager               |                   |              | Time Unit Leader (t)               | Brandon Brown           |
| Helibase Manager (t)           |                   |              | Cost Unit Leader                   | Tom Steele              |
|                                |                   |              | Cost Unit Leader (t)               | Stacey Eaton            |
|                                |                   |              | Comps/Claims                       | Terri McDonald -v       |
|                                |                   |              |                                    | 912-314-9233            |
|                                |                   |              |                                    | 765-427-7564            |
|                                |                   |              |                                    | 270-855-1019            |
|                                |                   |              |                                    | 770-363-3583            |
|                                |                   |              |                                    | 850-375-9464            |
|                                |                   |              |                                    | 352-454-5385            |

|                                     |                                    |                  |                       |
|-------------------------------------|------------------------------------|------------------|-----------------------|
| <b>UNIT LOG</b>                     | 1. Incident Name                   | 2. Date Prepared | 3. Time Prepared      |
| 4. Unit Name/Designators            | 5. Unit Leader (Name and Position) |                  | 6. Operational Period |
| <b>7. Personnel Roster Assigned</b> |                                    |                  |                       |
| Name                                | ICS Position                       | Home Base        |                       |
|                                     |                                    |                  |                       |
|                                     |                                    |                  |                       |
|                                     |                                    |                  |                       |
|                                     |                                    |                  |                       |
|                                     |                                    |                  |                       |
|                                     |                                    |                  |                       |
|                                     |                                    |                  |                       |
|                                     |                                    |                  |                       |
|                                     |                                    |                  |                       |
|                                     |                                    |                  |                       |
|                                     |                                    |                  |                       |
|                                     |                                    |                  |                       |
|                                     |                                    |                  |                       |
|                                     |                                    |                  |                       |
|                                     |                                    |                  |                       |
|                                     |                                    |                  |                       |
|                                     |                                    |                  |                       |
|                                     |                                    |                  |                       |
|                                     |                                    |                  |                       |
|                                     |                                    |                  |                       |
|                                     |                                    |                  |                       |
| <b>8. Activity Log</b>              |                                    |                  |                       |
| Time                                | Major Events                       |                  |                       |
|                                     |                                    |                  |                       |
|                                     |                                    |                  |                       |
|                                     |                                    |                  |                       |
|                                     |                                    |                  |                       |
|                                     |                                    |                  |                       |
|                                     |                                    |                  |                       |
|                                     |                                    |                  |                       |
|                                     |                                    |                  |                       |
|                                     |                                    |                  |                       |
|                                     |                                    |                  |                       |
|                                     |                                    |                  |                       |
|                                     |                                    |                  |                       |
|                                     |                                    |                  |                       |
|                                     |                                    |                  |                       |
|                                     |                                    |                  |                       |
|                                     |                                    |                  |                       |
|                                     |                                    |                  |                       |
|                                     |                                    |                  |                       |
|                                     |                                    |                  |                       |
|                                     |                                    |                  |                       |
|                                     |                                    |                  |                       |
|                                     |                                    |                  |                       |
|                                     |                                    |                  |                       |
|                                     |                                    |                  |                       |
|                                     |                                    |                  |                       |
| 9. Prepared by (Name and Position)  |                                    |                  |                       |

# MEDICAL PLAN (ICS 206 WF)

Controlled Unclassified Information//Basic

## Medical Incident Report

**FOR A NON-EMERGENCY INCIDENT, WORK THROUGH CHAIN OF COMMAND TO REPORT AND TRANSPORT INJURED PERSONNEL AS NECESSARY.**

**FOR A MEDICAL EMERGENCY: IDENTIFY ON SCENE INCIDENT COMMANDER BY NAME AND POSITION AND ANNOUNCE "MEDICAL EMERGENCY" TO INITIATE RESPONSE FROM IMT COMMUNICATIONS/DISPATCH.**

**Use the following items to communicate situation to communications/dispatch.**

**1. CONTACT COMMUNICATIONS / DISPATCH** (Verify correct frequency prior to starting report)

*Ex: "Communications, Div. Alpha. Stand-by for Emergency Traffic."*

**2. INCIDENT STATUS:** Provide incident summary (including number of patients) and command structure.

*Ex: "Communications, I have a Red priority patient, unconscious, struck by a falling tree. Requesting air ambulance to Forest Road 1 at (Lat./Long.) This will be the Trout Meadow Medical, IC is TFLD Jones. EMT Smith is providing medical care."*

|   |  |  |
|---|--|--|
| Severity of Emergency / Transport Priority        | <input type="checkbox"/> <b>RED / PRIORITY 1 Life or limb threatening injury or illness. Evacuation need is IMMEDIATE</b><br><i>Ex: Unconscious, difficulty breathing, bleeding severely, 2<sup>o</sup> - 3<sup>o</sup> burns more than 4 palm sizes, heat stroke, disoriented.</i><br><input type="checkbox"/> <b>YELLOW / PRIORITY 2 Serious Injury or illness. Evacuation may be DELAYED if necessary.</b><br><i>Ex: Significant trauma, unable to walk, 2<sup>o</sup> - 3<sup>o</sup> burns not more than 1-3 palm sizes.</i><br><input type="checkbox"/> <b>GREEN / PRIORITY 3 Minor Injury or illness. Non-Emergency transport</b><br><i>Ex: Sprains, strains, minor heat-related illness.</i> |  |
| Nature of Injury or Illness & Mechanism of Injury |  | Brief Summary of Injury or Illness<br><i>(Ex: Unconscious, Struck by Falling Tree)</i> |
| Transport Request                                 |  | Air Ambulance / Short Haul/Hoist<br>Ground Ambulance / Other                           |
| Patient Location                                  |  | Descriptive Location & Lat. / Long. (WGS84)  |
| Incident Name                                     |  | Geographic Name + "Medical"<br><i>(Ex: Trout Meadow Medical)</i>                       |
| On-Scene Incident Commander                       |  | Name of on-scene IC of Incident within an Incident<br><i>(Ex: TFLD Jones)</i>          |
| Patient Care                                      |  | Name of Care Provider<br><i>(Ex: EMT Smith)</i>  |

**3. INITIAL PATIENT ASSESSMENT:** Complete this section for each patient as applicable (start with the most severe patient)

Patient Assessment: See IRPG page 106

Treatment:

**4. TRANSPORT PLAN:**

Evacuation Location (if different): (Descriptive Location (drop point, intersection, etc.) or Lat. / Long.) Patient's ETA to Evacuation Location:

Helispot / Extraction Site Size and Hazards:

**5. ADDITIONAL RESOURCES / EQUIPMENT NEEDS:**

*Example: Paramedic/EMT, Crews, Immobilization Devices, AED, Oxygen, Trauma Bag, IV/Fluid(s), Splints, Rope rescue, Wheeled litter, HAZMAT, Extrication*

**6. COMMUNICATIONS: Identify State Air/Ground EMS Frequencies and Hospital Contacts as applicable**

| Function    | Channel Name/Number | Receive (RX) | Tone/NAC * | Transmit (TX) | Tone/NAC * |
|-------------|---------------------|--------------|------------|---------------|------------|
| COMMAND     |                     |              |            |               |            |
| AIR-TO-GRND |                     |              |            |               |            |
| TACTICAL    |                     |              |            |               |            |

**7. CONTINGENCY: Considerations:** If primary options fail, what actions can be implemented in conjunction with primary evacuation method? Be thinking ahead.

**8. ADDITIONAL INFORMATION:** Updates/Changes, etc.

**REMEMBER:** Confirm ETA's of resources ordered. Act according to your level of training. Be Alert. Keep Calm. Think Clearly. Act Decisively.