

Incident Action Plan



Day Operational Period

Thursday 08/19/2021 0600 - 2100

Swing Shift Period

Thursday 08/19/2021 1200 – Friday 08/20/2021 0300

West Lolo Complex MT-LNF-000893 P1N5AN (0116)

2021.westlolo.finance@firenet.gov

Incident Information



INCIDENT OBJECTIVES	1. Incident Name West Lolo Complex	2. Date Prepared 8/18/2021	3. Time Prepared 1500
	4. Operational Period Thursday August 19, 2021 0600 - Friday August 20, 2021 0300		
5. Leader's Intent			
<ul style="list-style-type: none"> Protect the identified values at risk utilizing full suppression strategies identified by Agency Administrators in alignment with their prioritization of specific values. Risk management tools will be used to evaluate tactics in order to provide for firefighter and public safety while implementing actions that have a high probability of success. The highest priority on this incident is to protect the safety of fire personnel and to protect human life followed by the protection of structures. Ensure LCES is known and understood by everyone, and contingencies and trigger points for disengagement are developed and followed. Maintain a positive and inclusive workplace where all employees are valued and treated with respect. 			
6. Incident Objectives			
<ul style="list-style-type: none"> Address the safety of firefighters, aviation and public through clear communication. Ensure an understanding of strategies and tactics, including a clearly defined and obtainable end state, in order to facilitate sound risk mitigation decision making. Infrastructure Values at Risk: Minimize fire threat and impacts to local communities, the Ashley Creek Municipal water supply, highway corridors, recreation improvements, commercial timberlands, BPA and Northwestern Energy transmission lines, Phillips 66 facilities, communication and SNOTEL sites, private property, and private structures. This will be achieved by coordinating suppression actions with cooperators responsible for structure protection, implementing indirect primary and contingency lines and strategic aerial ignition operations. Natural and Cultural Resource Values at Risk: Weigh potential suppression actions in consideration of heritage resources, waterways and riparian areas, and bull trout and anadromous fish habitat in order to minimize fire effects and undesirable suppression related effects to these values. Continue to develop and implement the long-term plan for fires in the complex that incorporate management actions in alignment with the protection of identified values, based on current and expected weather and fire behavior. The long-term plan will incorporate primary, alternate, contingency, and emergency plans identifying opportunities for both direct and indirect suppression actions. Maintain and strengthen relationships with the Lolo and Kootenai National Forests; MT DNRC; Sanders County Sheriff, Emergency Managers, and VFD's; community leaders; cooperators; local government and agencies; and private landowners utilizing the most effective platforms available. Provide timely, accurate, and consistent incident information through the press, community meetings, trap lines, briefings and social media. Incident information shall be coordinated between the team and Forest Service Line Officers, MT DNRC Unit Manager, and the Sanders, Missoula, and Clearwater Sheriff Offices. Continue to monitor costs and implement cost effective methods for accomplishing operational objectives. Ensure adherence to current guidance regarding COVID-19 to provide for the health and safety of all incident personnel by implementing the module-of-one concept, social distancing, and masking up as appropriate. 			
7. Attachments (X – if attached)			
[X] Organization List - ICS 203		[X] Medical Plan - ICS 206	[] _____
[X] Division Assignment Lists - ICS 204		[X] Unit Log 214	[] _____
		[X] WF206 8 Line	[] _____
8. Prepared By (Planning Section Chief)		9. Approved By (Incident Commander)	
Kelly Russell, PSC2 (t) <i>Kelly Russell</i>		Debbie Beard, IC <i>Debbie Beard</i>	
ICS 202		NFES 1326	

ORGANIZATION ASSIGNMENT LIST (ICS 203)

1. Incident Name:		2. Operational Period:	
WEST LOLO COMPLEX		Date/Time From: 08/19/2021 0600	THU Date/Time To: 08/20/2021 0300 FRI
3. Incident Commander(s) and Command Staff:		ORDERING MANAGER	LEIGH OSTIN, SHERRI KITE
IC/UC	DEBORAH BEARD, MARTY BENTLEY	SUPPLY UNIT	LEMUEL COOKSEY
INFORMATION OFFICER	MICHELLE BURNETT, A. GRAY -V, R. BIBLE, C. DOWD (T) -V, E. CLEAVER (T) -V, B. SMITH (T), T. BOLES (T), R. BUTLER(T), K. HINES (T), G. HELLER (T),	RECEIVING/DISTRIBUTION MANAGER	VINCE MULLINS, RANDALL HAMILTON (T)
		FACILITIES UNIT	STEVE WEHERLEY, JOHN DUNLAP (T)
LIAISON OFFICER	MICHAEL WRIGHT, JEFFREY GARDNER (T), BRADLEY COOPER (T)	BASE CAMP MANAGER	CARTY CARSON
SAFETY OFFICER	PAUL CHURCHILL, B. KELLEY, S. DUGGAR, L. HOLSOMBACK, B. HOGGE, J. HENDERSON (T), S. GRAY (T)	GROUND SUPPORT UNIT	TODD WALLER, WILLARD STANLEY
		EQUIPMENT MANAGER	MATT HANCOCK, KEELY BENSON (T) BRIAN TRUSS (T)
COVID COORDINATOR	ROBERT CLAYBROOK (T)	FOOD UNIT	TOM PHILIPPS, CARL BAUER (T)
4. Agency/Organization Representative(s):		COMMUNICATIONS UNIT	GEORGE ROSENTHAL, SHANNON HERRING (T)
Agency/Organization	Name	MEDICAL UNIT	JEFF CUMMINGS, SCOTT PHILLIPS, SHERRI MCDUGAL (T)
LNF AA	CAROLYN UPTON	7. Operations Section:	
WEST LOLO AREP	ERIC TOMASIK, DAVE WROBLESKI, MIKE FEIGER	DAY OPS CHIEF	JEFFREY SCHARDT
LNF COVID SUPPORT	AMY CARMICHAEL	FIELD OPS	JOSH GRAHAM, BERT PLANTE (T)
READ	ANN HADLOW, M. MUELLER, M. KALINA, K. RICHARDSON, E. VANDERBEEK	PLANNING OPS	SHAWN NAGLE, MATT JOHNSON (T)
IBA	DEBBY WESSELIUS, ERIN LALLY (T)	SWING OPS CHIEF	BRIAN ELAM
5. Planning Section:		STRUCTURE PROTECTION	KEVIN GRODI (T)
CHIEF	JESSICA HOLLINGSWORTH, CAROL O'BRYAN, THOMAS BARRETT -V, KELLY RUSSELL (T)	DIVISION/GROUP	CHARLIE/ZULU/PAPA
SITUATION UNIT	TERRY BOWERMAN, E. ROBERTSON (T)		GREG SALANSKY, DAVE MCCLAY-SCHULTE(T)
FIRE BEHAVIOR ANALYST	KELLY CAGLE	DIVISION/GROUP	ECHO
GIS SPECIALIST	CLAY COOLEY (T)		DANIEL HELTERLINE
DEMOBILIZATION UNIT	JEFF DEMATTEIS	DIVISION/GROUP	JULIET/HOTEL
RESOURCES UNIT	M. SELLERS, A. LAND, J. HOWELL (T)		HEATH THOMAS, MATT HUNDT (T)
STATUS CHECK-IN	KEN PARKER (T), PAULA HENSLEY (T)	DIVISION/GROUP	NOVEMBER
ITSS	KEVIN CURRY -V, JOSH SKIDMORE (T)		JASON KLAWINSKY, MATTHEW MOE (T)
HR SPECIALIST	DEBBY HASSEL	DIVISION/GROUP	STRUCTURE
TRAINING SPECIALIST	ROBBIE HOLLINGSWORTH -V		JARED NOBLES, BRENTON HOLT (T)
INCIDENT METEOROLOGIST	MIKE OTTENWELLER	DIVISION/GROUP	SWING
AIR RESOURCE ADVISOR	JOY MARTIN		DANNY GORE
6. Logistics Section:		DIVISION/GROUP	SECURITY
CHIEF	CAMERON CRISP, TOM PHILIPPS, MARK EATON (T), CARL BAUER (T)	7b. Air Operations Branch:	
		AOBD	LARRY TRAPP
		AIR SUPPORT SUPERVISOR	CHARLES BARCLAY (T)
		AIR SUPPORT SUPERVISOR	ALBERT FARIA
9. Prepared By:		8. Finance/Administration Section:	
Name:	AERIN LAND	CHIEF	JASON GILLIS, LAURA WILSON (T)
Position/Title:	RESL	TIME UNIT	COLLEEN GADD -V, DONNA BENTLEY -V
Signature:		COMPENSATION UNIT	TERRI MCDONALD -V
ICS 203	IAP Page	COST UNIT	TOM STEELE, STACEY EATON (T)
Date/Time:	08/18/2021 0839	EQ TIME	KELLEY REEVES-V



Fire Weather Forecast



FORECAST NO: 40
 PREDICTION FOR: Thursday Day Shift
 SHIFT DATE: August 19, 2021
 FORECAST ISSUED: 1800 August 18, 2021

NAME OF FIRE: West Lolo Complex
 UNIT: MT-LNF / Srn. Area Gold Team
 Phone Number: (616) 450-5002
 Incident Meteorologist: Mike Ottenweller

WEATHER DISCUSSION: After a cool start to the day, partly cloudy skies will allow for some warming and drying to begin. Temperatures will slowly rebound as the airmass dries out some. Winds will remain relatively light. Friday will be very similar to Thursday with a slight chance of thunderstorms in the afternoon. Another system will bring another chance of wetting rains to the area late Friday night into Saturday morning.

WEATHER FORECAST TODAY (THURSDAY):

	Thorne (3,700 ft)	ICP (2,600 ft)
Max / Min Temp.	68-73F / 49-54F	72-77F / 47-52F
Min / Max RH	40-50% / 55-65%	30-40% / 90-100%
Winds (20 foot)	W Winds 5-10 mph on the ridges. Down canyon in the Thompson river drainage 4-7 mph. DIV-Z WNW winds 6-9 mph.	Variable winds 5-7 mph
Notes		

WEATHER: Cool and partly cloudy.

LAL: 1 **CWR:** 0% **HAINES:** 2

STABILITY / INVERSION: Inversion break around 1200, then mixing height up to 6,000 ft AGL.

SMOKE TRANSPORT WIND: N-NW 10 mph.

OUTLOOK FOR FRIDAY: Partly Cloudy, slight chance of thunderstorms. Rain possible by late evening. Max Temps: 70 - 75F. Min RH: 40 - 50%. Max RH: 70 - 80%. Ridge Wind: W 5-10 mph. LAL 2. CWR 20%. Haines 2.

THREE DAY EXTENDED (SATURDAY – MONDAY 3,700 FT)

	Max T	Min RH	Max RH	Ridge Winds, Afternoon	WX
SAT	66	48%	80%	ENE 10 mph gust 14	Rain
SUN	68	35%	75%	SW 13 mph gust 22	
MON	68	27%	70%	SW 12 mph gust 18	

FIRE BEHAVIOR FORECAST

FORECAST NUMBER: #34	TYPE OF FIRE: Wildland
FIRE NAME: West Lolo Complex	OPERATIONAL PERIOD: 8/19/2021
DATE ISSUED: 08/18/2021	TIME ISSUED: 2000
UNIT: Lolo National Forest	WRITTEN: <i>Kelly Cagle</i> - FBAN

FUEL ASSUMPTIONS: The major fuel type found on the West Lolo Complex is fuel model 10 (mixed conifer with heavy dead/down). There are also areas of TU 5 – which is timber with a shrub component underneath. Fuel arrangement may be a blend of these 2 conditions. There are areas of fuel model 2 (grass with timber overstory) in the lowest elevations. Heavy fuels are very dry and are the primary driver of fire spread. Live fuels will contribute anywhere that wind and slope align.

WEATHER SUMMARY: Reference fire weather forecast for specifics. After a cool start to the day, partly cloudy skies will allow for some warming and drying to begin. Temperatures will slowly rebound as the airmass dries out some. Winds will remain relatively light.

General Fire Behavior Forecast: Expect minimal fire behavior today. Fuels are wet and will remain wet most of the day. Heavy fuels may continue to smolder and consume, but little forward movement or growth will occur today. A few visible smokes possible. An open sunny area with grass fuel might support minimal fire spread.

Swing Shift: Fuels are wet and expected to remain wet during the evening and overnight. Some smoldering in heavy fuels will be ongoing. No forward movement or growth expected.

Critical fire behavior thresholds:

RH below 25% Winds greater than 10 1000 hr FM less than 12% Haines 5 or 6

Specific:

Division November – Expect minimal fire behavior. Heavy fuels likely to continue to smolder and consume – especially along the Thompson River, but little forward movement or growth expected today. A few visible smokes possible.

Division Echo/Hotel/Juliet– Minimal fire behavior expected today. A few smokes visible from dead/down heavies – but little to no fire spread will occur today.

Divisions **Charlie/Papa/Zulu** – A few smokes may be visible. Expect heavy fuels to continue to smolder and consume. Little fire spread or growth expected today.

Initial Attack – Low potential for IA activity today. If IA occurs, expect minimal fire behavior.

Fine fuel moisture today is - Damp Rates of Spread in Timber- Creeping

Probability of Ignition today - Low Rates of Spread in Grass- 1 to 2

Max Spotting Distance Today- Low Flame Lengths- Low

AIR OPERATIONS : Weak inversion early, but is expected to lift by early afternoon. Suitable skies rest of day.

FIRE BEHAVIOR SAFETY: Crews are now working in fire damaged and weakened timber. Snags will begin to burn thru and fall over. Make sure to Look Up, Look Down and Look All Around.

Division/Group Assignment List (ICS 204 WF)
Controlled Unclassified Information//Basic

1. Incident Name:			3.			
WEST LOLO COMPLEX			Branch:		Division/Group	
2. Operational Period:			THORNE		C/Z/P	
Date/Time From: 08/19/2021 0600	THU	Date/Time To: 08/19/2021 2100				
4. Operations Personnel						
OPERATIONS CHIEF		JEFF SCHARDT		BRANCH DIRECTOR		
DIVISION/GROUP SUPERVISOR		GREG SALANSKY DAVE MACLAY-SCHULTE (T)		AIR ATTACK SUPERVISOR		
5. Resources Assigned this Period						
Strike Team / Task Force / Resource Designator		LWD	Leader	Number Persons	Drop Off PT./Time	Pick Up PT./Time
TFLD *		08/31	CODY JERMYN	1	ICP/0600	ICP/2100
E-143 ENG3 J3 CONTRACTING		08/26	WYATT LAWRENCE	3	ICP/0600	ICP/2100
E-174 ENG3 HART VENTURES		08/25	JOE WETZEL SR.	3	ICP/0600	ICP/2100
E-176 ENG6 GLOBAL FRONTLINE IA		08/19	STEVEN BROUILLETTE	2	ICP/0600	ICP/2100
E-183 WTS2 PHR ENTERPRISE		08/24	PAUL HENDREN	1	ICP/0600	ICP/2100
E-185 WTS2 TAYLOR SERVICES		08/25	MIKE GRZECHOWIAK	1	ICP/0600	ICP/2100
E-173 WTS2 MOORE EARTHMOVER		08/19	BUDDY REMSTETTER	1	ICP/0600	ICP/2100
O-508 SOF2		09/01	BARRY HOGGE	1	ICP/0600	ICP/2100
O-426 EMTF		08/19	TIM HIGEONS	1	ICP/0600	ICP/2100
AMBO #2 BLS		08/28	GREG DAVIS	2	ICP/0600	ICP/2100
6. Control Operations/Work Assignments:						
<p>TASK: Monitor fire activity and spread north of Cougar Peak Road. Continue patrolling and mop up along fireline in Charlie, Zulu and Papa divisions. Maintain coordination and public relations with private landowners in fire impacted area. Backhaul all trash and unneeded equipment.</p> <p>PURPOSE: To have control features in place that have the highest probability of success for incident resources. Maintain positive relationships with private landowners and cooperators during suppression operations.</p> <p>END STATE: The fire is contained at the established control features with minimal impacts to private property, natural resources and values at risk. Local relationships are strengthened through timely communications, cooperation and coordination.</p>						
7. Special Instructions:						
<p>Josh Graham (Day-Field Operations Section Chief) will monitor Channel 13/Channel Name: Eddy for any initial attack needs within the Thorne Creek Fire Temporary Flight Restriction (TFR). Additionally, local USFS Duty Officer will contact Josh Graham via cell phone (501-545-3088) for any initial attack needs within or outside of the TFR. Resources pre-identified for Initial Attack response are noted with an "IA" on this 204.</p> <p>*Indicates a local lent resource.</p>						
8. Division/Group Communication Summary						
Function	Channel	RX Frequency N/W	RX Tone/NAC	TX Frequency N/W	TX Tone/NAC	Mode
COMMAND	9	171.0625	136.5	163.8250	136.5	
TACTICAL	6	168.2500	136.5	168.2500	136.5	
AIR TO GROUND	11	167.9000		167.9000		
9. Prepared By (Resource Unit Leader)			Approved By (Planning Section Chief)		Date	Time
JOCELYN HOWELL RESL (T)			KELLY RUSSELL - PSC2(T)		08/18/2021	0839

Division/Group Assignment List (ICS 204 WF)
Controlled Unclassified Information//Basic

1. Incident Name:			3.			
WEST LOLO COMPLEX			Branch:		Division/Group	
2. Operational Period:			THORNE		E	
Date/Time From: 08/19/2021 0600 THU	Date/Time To: 08/19/2021 2100 THU					
4. Operations Personnel						
OPERATIONS CHIEF		JEFF SCHARDT		BRANCH DIRECTOR		
DIVISION/GROUP SUPERVISOR		DAN HELTERLINE		AIR ATTACK SUPERVISOR		
5. Resources Assigned this Period						
Strike Team / Task Force / Resource Designator	LWD	Leader	Number Persons	Drop Off PT./Time	Pick Up PT./Time	
HEQB*		DUSTIN WAGONER	1	ICP/0600	ICP/2100	
O-520 HEQB	09/01	DAN CASTILLO	1	ICP/0600	ICP/2100	
HC2 NATIONAL GUARD #3	08/21	CHRIS YOUNG/ZAK MUNK(T)	1	ICP/0600	ICP/2100	
O-32 FMOD MILLER CREEK	08/23	PETE CLIFFORD	2	ICP/0600	ICP/2100	
E-55 DOZ3 TRAVER'S DOZER	08/20	BEN TRAVER	1	ICP/0600	ICP/2100	
O-469.7 SOF2	08/25	SHAWN DUGGAR	1	ICP/0600	ICP/2100	
O-63 REMS 1	08/26	MATT FOX	4	ICP/0600	ICP/2100	
6. Control Operations/Work Assignments:						
<p>TASK: Continue "road as line" improvement along 7685 road system to Fishtrap road. Continue scouting for alternate line location and control features that can check / slow fire spread north and east of Marmot Peak. Remove hoselay and sprinkler system west of 2014 Spruce 2 fire footprint. Monitor fire behavior and movement. Coordinate any line construction with incident READ.</p> <p>PURPOSE: Have continuous fuel break from Thompson River Road to Fishtrap to slow eastward progression of fire onto state and private lands. To establish indirect control features, with minimum impact to natural resources, that will be used to stop fire progression.</p> <p>END STATE: Fire spread is limited and does not impact state/private lands. Values at risk are not impacted by fire.</p>						
7. Special Instructions:						
<p>Josh Graham (Day-Field Operations Section Chief) will monitor Channel 13/Channel Name: Eddy for any initial attack needs within the Thorne Creek Fire Temporary Flight Restriction (TFR). Additionally, local USFS Duty Officer will contact Josh Graham via cell phone (501-545-3088) for any initial attack needs within or outside of the TFR. Resources pre-identified for Initial Attack response are noted with an "IA" on this 204.</p> <p>*Indicates a local lent resource.</p>						
8. Division/Group Communication Summary						
Function	Channel	RX Frequency N/W	RX Tone/NAC	TX Frequency N/W	TX Tone/NAC	Mode
COMMAND 41	10	171.8375	136.5	165.3875	136.5	
TACTICAL	3	168.6000	136.5	168.6000	136.5	
AIR TO GROUND	11	167.9000		167.9000		
9. Prepared By (Resource Unit Leader)		Approved By (Planning Section Chief)		Date		Time
JOCELYN HOWELL RESL (T)		KELLY RUSSELL - PSC2(T)		08/18/2021		0839

Division/Group Assignment List (ICS 204 WF)
Controlled Unclassified Information//Basic

1. Incident Name:			3.			
WEST LOLO COMPLEX			Branch:		Division/Group	
2. Operational Period:			THORNE		J/H	
Date/Time From: 08/19/2021 0600	THU	Date/Time To: 08/19/2021 2100				
4. Operations Personnel						
OPERATIONS CHIEF		JEFF SCHARDT		BRANCH DIRECTOR		
DIVISION/GROUP SUPERVISOR		HEATH THOMAS MATT HUNDT (T)		AIR ATTACK SUPERVISOR		
5. Resources Assigned this Period						
Strike Team / Task Force / Resource Designator		LWD	Leader	Number Persons	Drop Off PT./Time	Pick Up PT./Time
PTF MOD*			BRITTNEY ALLESTAD	6	ICP/0600	ICP/2100
O-469.5 SOF2		08/25	BUDDY KELLEY	1	ICP/0600	ICP/2100
O-469.11 SOF2 (T)		08/25	STEVE GRAY	1	ICP/0600	ICP/2100
6. Control Operations/Work Assignments:						
<p>TASK: Continue scouting for alternate line location and control features that could check / slow fire spread north and east of Priscilla Peak. Monitor fire behavior and movement. Coordinate any line construction activities with incident READ. Plan for and anticipate potential strategic firing operations along Thompson River Road and Fishtrap Road. Work with Structure Group for assessment and improvement in Fishtrap community. Utilize mechanical fuel reduction techniques along Fishtrap road, within Forest boundaries.</p> <p>PURPOSE: Have continuous fuel break from Thompson River Road to Fishtrap to slow eastward progression of fire onto state and private lands. To establish indirect control features, with minimum impact to natural resources, that will be used to stop fire progression.</p> <p>END STATE: Fire spread is limited and does not impact state/private lands. Values at risk are not impacted by fire.</p>						
7. Special Instructions:						
<p>Josh Graham (Day-Field Operations Section Chief) will monitor Channel 13/Channel Name: Eddy for any initial attack needs within the Thorne Creek Fire Temporary Flight Restriction (TFR). Additionally, local USFS Duty Officer will contact Josh Graham via cell phone (501-545-3088) for any initial attack needs within or outside of the TFR. Resources pre-identified for Initial Attack response are noted with an "IA" on this 204.</p> <p>*Indicates a local lent resource.</p>						
8. Division/Group Communication Summary						
Function	Channel	RX Frequency N/W	RX Tone/NAC	TX Frequency N/W	TX Tone/NAC	Mode
COMMAND	8	170.6875	136.5	166.5750	136.5	
TACTICAL	4	166.7250	136.5	166.7250	136.5	
AIR TO GROUND	11	167.9000		167.9000		
9. Prepared By (Resource Unit Leader)			Approved By (Planning Section Chief)		Date	Time
JOCELYN HOWELL RESL (T)			KELLY RUSSELL - PSC2(T)		08/18/2021	0839

Division/Group Assignment List (ICS 204 WF)
Controlled Unclassified Information//Basic

1. Incident Name:			3.			
WEST LOLO COMPLEX			Branch:		Division/Group	
2. Operational Period:			THORNE		N	
Date/Time From: 08/19/2021 0600 THU	Date/Time To: 08/19/2021 2100 THU					
4. Operations Personnel						
OPERATIONS CHIEF JEFF SCHARDT		BRANCH DIRECTOR				
DIVISION/GROUP SUPERVISOR JASON KLAWINSKY MATT MOE (T)		AIR ATTACK SUPERVISOR				
5. Resources Assigned this Period						
Strike Team / Task Force / Resource Designator	LWD	Leader	Number Persons	Drop Off PT./Time	Pick Up PT./Time	
TFLD (T)*		CODY ISHLER	1	ICP /0600	ICP/2100	
O-33 FMOD SWEDBERG	08/25	ELIJAH SHOWN	2	ICP /0600	ICP/2100	
E-9004 ENG6 MISSISSIPPI 643* IA	09/02	CHRIS HAINES	3	ICP /0600	ICP/2100	
ENG6 MT-KNF-E673*	08/28	MURRAY	6	ICP /0600	ICP/2100	
E-177 ENG6 GILA 621	08/23	DUSTIN ROGER	6	ICP /0600	ICP/2100	
E-40 SKG2 WILDFIRE SERVICES	08/22	DAVE FISH	1	ICP /0600	ICP/2100	
E-138 WTS2 CAHOON *	08/31	QUIRT CORNETT	1	ICP /0600	ICP/2100	
E-181 WTS2 TAYLOR SERVICES	08/28	HOLGAND	1	ICP /0600	ICP/2100	
E-137 WTS2 WILDLAND CONT.	08/29	JAMES BURR	1	ICP /0600	ICP/2100	
E-79 WTS2 IVANOFF	08/30	BRAD IVANOFF	1	ICP /0600	ICP/2100	
E-2 WTS2 A-1 FIRE SERVICE	08/25	ALFRED BLAIR	1	ICP /0600	ICP/2100	
O-469.7 SOF2	08/25	SHAWN DUGGAR	1	ICP /0600	ICP/2100	
O-508 SOF2	09/01	BARRY HOGGE	1	ICP /0600	ICP/2100	
AMBO #1 ALS *	08/29	KARI TOMLINSON	2	ICP /0600	ICP/2100	
6. Control Operations/Work Assignments:						
<p>TASK: Plan for and coordinate future, potential ignition operations in Thompson River Corridor and Copper King community. Utilize aircraft to slow fire spread when spotting / running potential exist. Secure, cool and mop up fire edge that has been progressed to containment lines. Maintain coordination and public relations with private landowners and cooperators. Monitor fire spread.</p> <p>PURPOSE: To have control features in place that have the highest probability of success for incident resources. Maintain positive relationships with private landowners and cooperators during suppression operations.</p> <p>END STATE: The fire is contained at the established control features with minimal impacts to private property,</p>						
8. Division/Group Communication Summary						
Function	Channel	RX Frequency N/W	RX Tone/NAC	TX Frequency N/W	TX Tone/NAC	Mode
COMMAND	7	170.0000	136.5	166.6750	136.5	
TACTICAL	5	166.7750	136.5	166.7750	136.5	
AIR TO GROUND	11	167.9000		167.9000		
9. Prepared By (Resource Unit Leader)		Approved By (Planning Section Chief)		Date	Time	
JOCELYN HOWELL RESL (T)		KELLY RUSSELL - PSC2(T)		08/18/2021	0839	

Division/Group Assignment List (ICS 204 WF)
Controlled Unclassified Information//Basic

1. Incident Name:				3.			
WEST LOLO COMPLEX				Branch:		Division/Group	
2. Operational Period:				THORNE		N	
Date/Time From: 08/19/2021 0600 THU		Date/Time To: 08/19/2021 2100 THU					
4. Operations Personnel							
OPERATIONS CHIEF		JEFF SCHARDT		BRANCH DIRECTOR			
DIVISION/GROUP SUPERVISOR		JASON KLAWINSKY MATT MOE (T)		AIR ATTACK SUPERVISOR			
6. Control Operations/Work Assignments:							
natural resources and values at risk. Local relationships are strengthened through timely communication, cooperation and coordination.							
7. Special Instructions:							
Josh Graham (Day-Field Operations Section Chief) will monitor Channel 13/Channel Name: Eddy for any initial attack needs within the Thorne Creek Fire Temporary Flight Restriction (TFR). Additionally, local USFS Duty Officer will contact Josh Graham via cell phone (501-545-3088) for any initial attack needs within or outside of the TFR. Resources pre-identified for Initial Attack response are noted with an "IA" on this 204.							
*Indicates a local lent resource. **Denotes a lend lease resource. ***Denotes a mission critical resource.							
8. Division/Group Communication Summary							
Function	Channel	RX Frequency N/W	RX Tone/NAC	TX Frequency N/W	TX Tone/NAC	Mode	
COMMAND	7	170.0000	136.5	166.6750	136.5		
TACTICAL	5	166.7750	136.5	166.7750	136.5		
AIR TO GROUND	11	167.9000		167.9000			
9. Prepared By (Resource Unit Leader)			Approved By (Planning Section Chief)			Date	Time
JOCELYN HOWELL RESL (T)			KELLY RUSSELL - PSC2(T)			08/18/2021	0839

Division/Group Assignment List (ICS 204 WF)
Controlled Unclassified Information//Basic

1. Incident Name:			3.			
WEST LOLO COMPLEX			Branch:		Division/Group	
2. Operational Period:			THORNE		STRUCTURE	
Date/Time From: 08/19/2021 0600	THU	Date/Time To: 08/19/2021 2100				
4. Operations Personnel						
OPERATIONS CHIEF		JEFF SCHARDT		BRANCH DIRECTOR/STSP		KEVIN GRODI
DIVISION/GROUP SUPERVISOR		JARED NOBLES BRENTON HOLT (T)		AIR ATTACK SUPERVISOR		
5. Resources Assigned this Period						
Strike Team / Task Force / Resource Designator		LWD	Leader	Number Persons	Drop Off PT./Time	Pick Up PT./Time
O-464 TFLD		08/25	STEPHAN OSMOND	1	ICP/0600	ICP/2100
E-188 ENG3 ROCKY MOUNTAIN FIRE		09/03	BRIAN CAHOON	3	ICP/0600	ICP/2100
E-206 ENG3 HART VENTURES		08/30	RHYS VAN ANDERSON	3	ICP/0600	ICP/2100
E-201 ENG3 MISSOULA CITY FIRE		08/31	STEVE FINNERTY	3	ICP/0600	ICP/2100
E-156 ENG6 BRUSH 13 * IA		08/21	DAMIAN TROW	3	ICP/0600	ICP/2100
E-180 ENG6 RED DOG WILDFIRE * IA		08/19	TIM ENGLAND	4	ICP/0600	ICP/2100
E-199 ENG6 HART VENTURES		08/28	KYLE COLTON	3	ICP/0600	ICP/2100
E-192 WTT1 LEVIATHAN		08/26	TRACEY SCOTT	1	ICP/0600	ICP/2100
E-184 WTS2 METAL WORKS		08/24	CHARLES WEBBER	1	ICP/0600	ICP/2100
E-147 WTT2 GREEN TEAM FIRE SERVICE		08/30	JOCKO HENDRICKSON	2	ICP/0600	ICP/2100
O-469.7 SOF2		08/25	SHAWN DUGGAR	1	ICP/0600	ICP/2100
O-490 EMTF		08/31	JONAH MEYER	1	ICP/0600	ICP/2100
6. Control Operations/Work Assignments:						
<p>TASK: Continue structure protection along Thompson River Road corridor and Copper King community. Remove any excess, unneeded water handling equipment and trash. Scout and plan future structure protection needs in Fishtrap and Big Prairie community. Maintain coordination and public relations with private landowners and cooperators. Contact homeowners before beginning any work on private property.</p> <p>PURPOSE: Determine appropriate defensive actions to be taken and resources required for a timely response.</p> <p>END STATE: All affected identified values at risk remain in their discovered condition and property owners restored to their place of residence. A solid response framework is turned over to Operations of Emergency Services.</p>						
7. Special Instructions:						
<p>Josh Graham (Day-Field Operations Section Chief) will monitor Channel 13/Channel Name: Eddy for any initial attack needs within the Thorne Creek Fire Temporary Flight Restriction (TFR). Additionally, local USFS Duty Officer will contact Josh Graham via cell phone (501-545-3088) for any initial attack needs within or outside of</p>						
8. Division/Group Communication Summary						
Function	Channel	RX Frequency N/W	RX Tone/NAC	TX Frequency N/W	TX Tone/NAC	Mode
COMMAND 4	7	170.000	136.5	166.6750	136.5	
TACTICAL	2	168.2000	136.5	168.2000	136.5	
AIR TO GROUND	11	167.9000		167.9000		
9. Prepared By (Resource Unit Leader)			Approved By (Planning Section Chief)		Date	Time
AERIN LAND - RESL			KELLY RUSSELL - PSC(T)		08/18/2021	0839

Division/Group Assignment List (ICS 204 WF)
Controlled Unclassified Information//Basic

1. Incident Name:		3.	
WEST LOLO COMPLEX		Branch: THORNE	Division/Group STRUCTURE
2. Operational Period:			
Date/Time From: 08/19/2021 0600 THU	Date/Time To: 08/19/2021 2100 THU		
4. Operations Personnel			
OPERATIONS CHIEF	JEFF SCHARDT	BRANCH DIRECTOR/STSP	KEVIN GRODI
DIVISION/GROUP SUPERVISOR	JARED NOBLES BRENTON HOLT (T)	AIR ATTACK SUPERVISOR	

7. Special Instructions:
the TFR. Resources pre-identified for Initial Attack response are noted with an "IA" on this 204.

8. Division/Group Communication Summary						
Function	Channel	RX Frequency N/W	RX Tone/NAC	TX Frequency N/W	TX Tone/NAC	Mode
COMMAND 4	7	170.000	136.5	166.6750	136.5	
TACTICAL	2	168.2000	136.5	168.2000	136.5	
AIR TO GROUND	11	167.9000		167.9000		

9. Prepared By (Resource Unit Leader)		Approved By (Planning Section Chief)		Date	Time
AERIN LAND - RESL		KELLY RUSSELL - PSC(T)		08/18/2021	0839

Division/Group Assignment List (ICS 204 WF)
Controlled Unclassified Information//Basic

1. Incident Name:			3.			
WEST LOLO COMPLEX			Branch:		Division/Group	
2. Operational Period:			THORNE		SWING	
Date/Time From: 08/19/2021 1200 THU	Date/Time To: 08/20/2021 0300 FRI					
4. Operations Personnel						
OPERATIONS CHIEF		BRIAN ELAM		BRANCH DIRECTOR		
DIVISION/GROUP SUPERVISOR		DANNY GORE		AIR ATTACK SUPERVISOR		
5. Resources Assigned this Period						
Strike Team / Task Force / Resource Designator	LWD	Leader	Number Persons	Drop Off PT./Time	Pick Up PT./Time	
O-465 TFLD	08/25	THEO JOHNSON	1	ICP/1200	ICP/0300	
E-126 ENG6 HART VENTURES	08/31	EUGENE WEASEL	3	ICP/1200	ICP/0300	
E-130 ENG6 CAHOON	08/24	ROBERT SNOW	3	ICP/1200	ICP/0300	
E-141 ENG6 DILLON	08/27	ROB DILLON	3	ICP/1200	ICP/0300	
E-148 WTS3 MISSION MTN	08/24	GORDAN DANN	1	ICP/1200	ICP/0300	
E-153 WTT2 WF RESOURCES & TENDER	08/25	JAMES HIEB	1	ICP/1200	ICP/0300	
E-39 SKG1 BIGFOOT	08/24	KURT SPENCER	1	ICP/1200	ICP/0300	
O-475 SOF2	08/27	LARRY HOLSOMBACK	1	ICP/1200	ICP/0300	
O-440 EMTF	08/22	CARL JOYCE	1	ICP/1200	ICP/0300	
6. Control Operations/Work Assignments:						
<u>TASK:</u> Provide assistance and extended coverage for strategic firing, holding and mop up from day shift operations. Patrol C/Z/P and N.						
<u>PURPOSE:</u> To use established control features that will prevent further fire movement outside Forest Service boundaries.						
<u>END STATE:</u> The fire is contained at the established control lines and values at risk are protected.						
7. Special Instructions:						
Brian Elam (Night-Field Ops Chief) will monitor Channel 13/Channel Name: Eddy for any IA needs within the Thorne Creek Fire Temporary Flight Restriction (TFR). Additionally, local USFS Duty Officer will contact Brian Elam via cell phone (336-467-7254) for any initial attack needs within or outside of the TFR. ***Denotes a mission critical resource.						
8. Division/Group Communication Summary						
Function	Channel	RX Frequency N/W	RX Tone/NAC	TX Frequency N/W	TX Tone/NAC	Mode
COMMAND	9	171.0625	136.5	163.8250	136.5	
TACTICAL	5	166.7750	136.5	166.7750	136.5	
AIR TO GROUND	11	167.9000		167.9000		
9. Prepared By (Resource Unit Leader)			Approved By (Planning Section Chief)		Date	Time
AERIN LAND - RESL			KELLY RUSSELL - PSC2(T)		08/18/2021	0839


Division/Group Assignment List (ICS 204 WF)
Controlled Unclassified Information//Basic

1. Incident Name:			3.			
WEST LOLO COMPLEX			Branch:		Division/Group	
2. Operational Period:			THORNE		SECURITY	
Date/Time From: 08/19/2021 0600 THU	Date/Time To: 08/19/2021 2100 THU					
4. Operations Personnel						
OPERATIONS CHIEF		BRANCH DIRECTOR				
DIVISION/GROUP SUPERVISOR		JOSHUA HINDMAN		AIR ATTACK SUPERVISOR		
5. Resources Assigned this Period						
Strike Team / Task Force / Resource Designator		LWD	Leader	Number Persons	Drop Off PT./Time	Pick Up PT./Time
O-472 SEC 1 DAY		08/30	JERALD FLOYD	1	ICP/0530	ICP/2200
24-HOUR ROTATION						
O-367 NATIONAL GUARD			LT. WIDHALM	1	24-HOUR ROTATION/	24-HOUR ROTATION/
O-367 NATIONAL GUARD NIGHT LEAD			SGT 1ST CLASS COFFMAN	1	24-HOUR ROTATION/	24-HOUR ROTATION/
6. Control Operations/Work Assignments:						
<p>TASK: Staff stationary control points and conduct law enforcement patrol of operational areas. PURPOSE: To control ingress and egress points to operational area and provide federal law enforcement patrol of operational area to enforce closures and respond to law enforcement incidents. END STATE: Maintain public and firefighter safety and security of assets assigned to the fire.</p>						
7. Special Instructions:						
<ul style="list-style-type: none"> Graves Roadblock - Staffed 24 hours. Weber Roadblock - Soft closure. Silcox- Soft closure West Fork Staging Rd-Soft closure Airport - Staffed 1900 - 0700 North end of ACM Rd- Closed by locked gate Fishtrap & 556 Rd-Staffed 24HR <p>For further information regarding road closures please contact the local Sheriff.</p>						
8. Division/Group Communication Summary						
Function	Channel	RX Frequency N/W	RX Tone/NAC	TX Frequency N/W	TX Tone/NAC	Mode
COMMAND						
TACTICAL						
LOGISTICS						
AIR TO GROUND						
9. Prepared By (Resource Unit Leader)			Approved By (Planning Section Chief)		Date	Time
AERIN LAND - RESL			KELLY RUSSELL - PSC2(T)		08/18/2021	0839

10. TASK/ MISSION/ ASSIGNMENT (Type/ function includes: Air Tactical, Retardant, Recon, Personnel Transport, Bucket Operations, SAR, etc.)					
TYPE/FUNCTION	PRIORITY	NAME OF PERSONNEL OR CARGO (If applicable) or instructions for tactical aircraft	MISSION START	FLY FROM	FLY TO
Buckets	1		As requested	Helibase	Fire
ReconPSD	2		As requested	Helibase	Fire
Slings	3		As requested	Helibase	Fire

Fires	Helibase, Dip Sites, Pick Up Sites, etc.
Thorne: N 47° 42.137' X W 115° 18.384'	Plains Helibase(S34): N 47° 28.51' X W 114° 53.96' Elevation: 2470'
	For a complete list see Ops Map:

Other Assigned Support Equipment

<p><u>REMINDER!!</u> A flight risk assessment (GAR) needs to be completed prior to daily missions</p> <p>Region 1 CWN Helicopter GAR</p>		Helibase Trailer Plains	E-81	
		Hotsy	S-27	
		Water Tender	E-122	
		LUA Plains	S-66	

Wind Restrictions

Flights above ground level	Flight Permitted in Winds Less than / Maximum Gust Spread		
	Type 1 Helicopters	Type 2 Helicopters	Type 3 Helicopters
More than 500' AGL	<50kts / Gusts: N/A	<50kts / Gusts: N/A	<50kts / Gusts: N/A
Less than 500' AGL	<40kts / Max Gust Spread: 15kts	<40 kts / Max Gust Spread: 15kts	<30kts / Max Gust Spread: 15kts



HEALTH AND SAFETY MESSAGE

SAFETY starts with **YOU**

We are **ALL** accountable for **SAFE** behaviors

INCIDENT: **West Lolo Complex**

DATE: August 19, 2021

Major Hazards and Risks: Structure Protection, and Driving

Structure Protection: Wildland Urban Interface (WUI): Structure firefighting is inherently dangerous because it involves indirect firefighting. Refer to page 12 of your IRPG for additional information. The primary consideration of any operation is to assure firefighter and public safety. It is a must to assess potential fire behavior, ingress/egress routes, nature of the threat, hazardous materials, and available water supplies before engaging in the protection of any structure.

Do not commit to stay and protect a structure unless a safety zone for firefighters and equipment has been identified at the structure during size-up and triage. Move to the nearest safety zone, let the fire front pass, and return as soon as conditions allow.

Driving: The roads near the fire line will continue to be muddy and slick for today. Drive defensively and slow down as needed to maintain safe driving. Remember to watch for wildlife, especially in the twilight hours.



Medical Incident Report (IWI)

For a non-emergency incident (green priority), work through the chain of command to provide needed care to patient.

For a medical emergency (yellow or orange priority), the incident commander (IC) of the medical emergency, will contact Divide Communications by radio.

The medical incident IC will announce they have a “medical emergency”.

Use the 8 Line Medical Incident Report found on the last page of the IAP (IRPG page 118) to relay your information to West Lolo Communications.

6. INSTRUCTIONS AND ASSIGNMENTS NOT CLEAR

Safety Officers: Paul Churchill, Buddy Kelley, Jeff Henderson (T), Shawn Duggar, Larry Holsomback, Barry Hogge, and Steve Gray (T)

INCIDENT SAFETY ANALYSIS 215a

West Lolo Complex - Thursday, August 19, 2021

8. Location	9. Hazard	6. Control or Abatement Action (Engineering, Administrative, PPE, Avoidance, Education, etc)
Incident	Air Operations	<ul style="list-style-type: none"> ~ Avoid transfer of risk from ground to aviation resources. ~ Utilize safe and effective strategy and tactics. Involve pilot in mission planning. Conduct thorough risk assessment prior to mission. ~ As of 8/15/21 flight time will be limited to Civil Twilight per Forest and Regional policy. ~ Ensure All aviation operations are integrated and coordinated into incident aviation operations ~ Build in contingencies to aircraft limitations. Extended medivac times etc. ~ Ensure positive communication with all air resources.
Fireline	Steep Terrain & Rolling Debris	<ul style="list-style-type: none"> ~ Maintain 8'-10' spacing when working & walking. ~ Avoid working above personnel when rolling material may impact those below. ~ Be on the lookout for rolling rocks, debris, or burning material. ~ Evaluate necessity to send personnel in areas with limited access. ~ Post lookouts IRPG Pg 7
Fireline	Hazard Trees	<ul style="list-style-type: none"> ~ Through daily briefings remind resources about established "Hazard Tree Safety" guidelines. ~ Inform resources on shallow rooted trees in fire area. Weakened root systems from drought and fire strain are more receptive to wind fall. ~ Establish trigger points for disengagement during high wind events. ~ Limit firefighter exposure in areas with potential weakened trees. ~ Utilize heavy equipment to remove / reduce hazard tree exposure.
Incident	Fatigue & Over Exertion	<ul style="list-style-type: none"> ~ Drink 1 quart of water each hour during and after work. ~ Rotate crews out of smoky areas. ~ Set a reasonable work pace and allow adequate rest breaks while on the project. ~ Stagger work crews start time to limit fatigue. ~ Use buddy system to monitor personnel of heat related and fatigue issues. ~ Follow work / rest guidelines.
Fireline	Firing Operations & Devices	<ul style="list-style-type: none"> ~ Only personnel trained in the use of each device will be authorized to use firing equipment. ~ Ensure all personnel are aware of firing operation that may affect them. ~ Wear appropriate PPE. ~ Ensure aerial/ground ignition plans have been developed and personnel are briefed.
Incident	Driving & Traffic	<ul style="list-style-type: none"> ~ Schedule shifts that promote travel during daylight hours to reduce driver fatigue and provide for increased reaction time. ~ Prepare drivers for fog/smokey/wet road conditions, wildlife and other unexpected hazards. ~ Establish incident tempo that reduces urgent operations and operational rush. Promote "Slow and Steady" pace. ~ Ensure drivers are with familiar vehicle operations (rental vehicles).
Fireline	Heavy Equipment Operations	<ul style="list-style-type: none"> ~ Provide daily safety briefings to remind about heavy equipment hazards. Always maintain working space. ~ Establish traffic control along roadways. Ensure communications are established with operators. ~ Identify and communicate hazards in the working area (traffic, power lines, culverts, etc) ~ Maintain awareness of specific roadway hazards for heavy equipment.
Incident	Personal Hygiene / Covid 19	<ul style="list-style-type: none"> ~ Adhere to local, agency and IMT policy and direction to prevent spread of virus. Educate incident personnel in policy and practices. ~ Ensure self assessments, social distancing, face coverings and personal hygiene. ~ Encourage anyone with potential symptoms notifies supervisor immediately. ~ Don't share personal items such as water bottles communication devices and utensils. ~ Wash hands before meals, and after use of rest room facilities. Follow with hand sanitizer.
Incident	Severe Weather	<ul style="list-style-type: none"> ~ Through daily safety briefings remind of "Thunderstorm Safety" guidelines ~ Establish "Trigger Points" to withdraw, and ensure all know rally site. ~ Develop strategy and tactics based on predictions to limit hazards and personnel exposure to hazard ~ Work with Logistics to find locations to stage resources to prevent exposure to elements to reduce health issues. ~ Ensure all personnel are aware of difference between Weather Watch and Warning.
Div N/J	Aerial Ignition	<ul style="list-style-type: none"> ~ Follow Aerial Ignition Plan and the RMA for aerial ignition. ~ Follow "Aviation Watch-Out Situations" IRPG Pg 46.
Incident	Wildlife & Livestock	<ul style="list-style-type: none"> ~ Provide training on wildlife hazards to all fireline personnel (Moose / Bear/ Buffalo). ~ Provide daily reminders of wildlife hazards to all personnel to maintain awareness. ~ Ensure personnel are comfortable with use of bear spray (if available) and other deterrents ~ Provide guards and other precautions as conditions warrant.

INCIDENT SAFETY ANALYSIS 215a

Fireline	Night Operations	<ul style="list-style-type: none"> ~ Maintain high visibility in work area and wear vest while in roadway. ~ Use glow sticks to mark hazards. ~ Ensure personnel have a personal light (headlamp). ~ Watch for signs of fatigue. ~ Take breaks away from areas of known hazard.
Incident	Incident Camp	<ul style="list-style-type: none"> ~ Be aware of camp medical and evacuation plans ~ Wear closed toe footwear with acceptable support. Be aware of potential for uneven footing and loose rocks. ~ Wear PPE as required for assigned tasks. ~ Loading and carrying: lift with legs, not back. ~ Drive slowly. Max 5 MPH. Watch for pedestrian traffic. ~ When Backing: Use a Spotter. ~ DO NOT drive or park in sleeping areas. ~ Personal Hygiene: Wear Masks, Distance, Wash hands after toilet use and prior to eating. ~ Stay active, stretch and walk around often. ~ Be Aware there may be Snakes, Insects and other live hazards in camp. ~ Alcohol and / or Illegal drugs are prohibited in camp.
Fireline	Indirect Fireline	<ul style="list-style-type: none"> ~ Post lookouts, identify escape routes and safety zones IRPG Pg. 7 ~ Review "Strategy Direct/Indirect Attack" IRPG Pg. 82-83 ~ Refer to "Line Location" IRPG Pg 84
Incident	Bees, Ticks, Mosquitoes	<ul style="list-style-type: none"> ~ Identify personnel with known allergic reactions to stings. ~ Provide repellants and nets to prevent stings ~ Ensure crew members have medication / EPI pens if needed and others on crew are aware of storage location(s) and how to use. ~ Establish inter-crew Incident within Incident process to expedite medical response to allergic fireline personnel.
Incident	Firefighter & Public Smoke Exposure	<ul style="list-style-type: none"> ~ Refer to "Smoke Hazards and Mitigation" IRPG Pg 30 ~ Use warning lights and provide traffic control on roadways during smoky and night operations. ~ Rotate crews out of smoky areas during firing and mop-up operations. ~ Contact Communications when firing operations are initiated.
Fireline	Structure Protection & HAZMAT	<ul style="list-style-type: none"> ~ Review "Wildland Urban Interface Firefighting" considerations, IRPG Pg 12-16 ~ Use "Structure Assessment" checklist, IRPG Pg 13 ~ Refer to "Structure Hazard Marking System" IRPG Pg 41 ~ Follow "HAZMAT Incident Operations" IRPG Pg 36
Incident	Foot Travel	<ul style="list-style-type: none"> ~ Take short steps in potentially slick or slippery areas. ~ Use caution on uneven surfaces. While traversing steep terrain on fireline move across slope when possible to travel up or down. ~ Place your full attention on walking. Focusing on cell phone while walking is unsafe. ~ If you do fall protect your head and back. Brace yourself if possible.
Fireline	ATV/UTV use	<ul style="list-style-type: none"> ~ Ensure equipment is inspected and safe to use. ~ Restrict UTV's to max width of 50" on ATV trails due to width and severe out sloped conditions. ~ Ensure operator is trained and certified to operate. ~ Ensure operator has proper PPE according to the Redbook and/or RMA. ~ Question if it is mission critical.

COVID Mitigations and Screening Tool



Maintain Situational Awareness of The Fire Environment: 10 & 18, LCES

- Monitor each other, watch for symptoms (Firefighter Health Screening Tool).
- Never share PPE, UTV & flight helmets, radios, or other equipment
- Implement daily decontamination procedures of apparatus and equipment
- Adjust operational periods to allow for additional COVID-19 logistics.
- Plan for overnight lodging/camping/feeding scenarios that maintain separation from other fire personnel and community

WILDLAND FIRE COVID-19 SCREENING TOOL

Today or in the past 24 hours, have you had any of the following symptoms¹?

Symptom
Cough more than expected?
Shortness of breath or difficulty breathing?
Fever? Chills?
Muscle pain, outside your normal for firefighting?
Sore throat?
New loss of taste or smell?
Fatigue, outside your normal for firefighting?
Headache, outside your normal for firefighting?
Congestion or runny nose, outside your normal for firefighting?
Nausea or vomiting
Diarrhea
<i>* Take temperature with no-touch thermometer, if available *</i>

MEDICAL PLAN (ICS 206)

1. Incident Name: West Lolo Complex		2. Operational Period: Date: 08-19-21 Time: 0630-0300					
3. Medical Aid Stations:							
Name	Location	Contact Number/Frequency	Paramedics on Site?				
Jeff Cummings (EMTB/MEDL)	ICP	317-730-6653	<input type="checkbox"/> Yes	<input checked="" type="checkbox"/> No			
Scott Phillips (EMPF/MEDL)	ICP	602-300-2156	<input checked="" type="checkbox"/> Yes	<input type="checkbox"/> No			
Sherri McDougal (AEMF/MEDL) (t)	ICP	715-783-0075	<input type="checkbox"/> Yes	<input checked="" type="checkbox"/> No			
Tim Higeons (EMTF)	C/P/Z	918-230-8844	<input type="checkbox"/> Yes	<input checked="" type="checkbox"/> No			
Ambulance 2 (BLS)	C/P/Z	406-360-8022	<input type="checkbox"/> Yes	<input checked="" type="checkbox"/> No			
REMS-1 EMS Team (ALS)	E	503-803-8107	<input checked="" type="checkbox"/> Yes	<input type="checkbox"/> No			
Ambulance 1 (ALS)	N	208-630-4589	<input checked="" type="checkbox"/> Yes	<input type="checkbox"/> No			
Joanah Meyer (EMTF)	Structure	413-695-5224	<input type="checkbox"/> Yes	<input checked="" type="checkbox"/> No			
Carl Joyce (EMTF)	Swing	303-717-8249	<input type="checkbox"/> Yes	<input checked="" type="checkbox"/> No			
Ambulance 3 (ALS)	ICP	503-515-8530	<input checked="" type="checkbox"/> Yes	<input type="checkbox"/> No			
4. Transportation: (indicate air or ground):							
In-Area Ambulance Services							
Ground Ambulance Service		Location	Number/Frequency	EMS Level			
Plains Ambulance		Plains, MT	911 (office 406-826-3670)	<input checked="" type="checkbox"/> ALS	<input checked="" type="checkbox"/> BLS		
Thompson Falls Ambulance		Thompson Falls, MT	911 or through the MIDC	<input type="checkbox"/> ALS	<input checked="" type="checkbox"/> BLS		
Air Ambulance Service		Location	Number/Frequency	EMS Level			
Two Bears Air (45 min response time)		Flathead, MT	406-758-5610	<input checked="" type="checkbox"/> ALS	<input type="checkbox"/> BLS		
Life Flight Network (32 min response time)		Missoula, MT	911 or through the MIDC	<input checked="" type="checkbox"/> ALS	<input type="checkbox"/> BLS		
5. Hospitals:							
Hospital Name	Address	Contact Number	Travel Time		Trauma Center	Burn Center	Helipad
			Air	Ground			
Clark Fork Valley	10 Kruger Rd, Plains MT 59859	406-826-4875	N/A	5 min	<input checked="" type="checkbox"/> Yes Level: 4	<input type="checkbox"/> Yes <input checked="" type="checkbox"/> No	<input checked="" type="checkbox"/> Yes <input type="checkbox"/> No
St. Patrick's Hospital	500 W Broadway, Missoula, MT 59859	406-543-7271	25 min	90 min	<input checked="" type="checkbox"/> Yes Level: 2	<input type="checkbox"/> Yes <input checked="" type="checkbox"/> No	<input checked="" type="checkbox"/> Yes <input type="checkbox"/> No
Sacred Heart Hospital	101 W 5 th , Spokane, WA, 99204	509-474-3344	50 min	150 min	<input checked="" type="checkbox"/> Yes Level: 1	<input type="checkbox"/> Yes <input checked="" type="checkbox"/> No	<input checked="" type="checkbox"/> Yes <input type="checkbox"/> No
Harbor View Medical Ct.	325 Ave., Seattle, WA 98104	206-744-3074	90 min	390 min	<input checked="" type="checkbox"/> Yes Level: 1	<input checked="" type="checkbox"/> Yes <input type="checkbox"/> No	<input checked="" type="checkbox"/> Yes <input type="checkbox"/> No
6. Special Medical Emergency Procedures:							
<ul style="list-style-type: none"> • Identify on scene IWI commander by name and position. Announce "Medical Emergency". • Patient or nearest responder notifies Group Supervisor who will respond to the scene and become the "incident within an incident" (IWI) commander. • Group Supervisor will notify nearest medical responder and ICP-Communications of the incident • Use the "8 Line" report attached to the back of this IAP or page 118 of the IRPG. • Urgent Care is for non-Life-threatening medical care. 							
7. Prepared by (MEDL): Sherri McDougal, MEDL(t) Signature: <i>Sherri McDougal</i> Jeff Cummings, MEDL Signature: <i>Jeff Cummings</i>							
8. Approved by (SOF2): Paul Churchill Signature: <i>/s/ Paul Churchill</i>							
ICS 206	IAP Page _____	Date/Time: 8/18/21 @ 1600					
Aviation Response Plan							
<ol style="list-style-type: none"> 1. Evaluate patient for Code Green-Yellow-Red per Medical Incident Report 8 Line 2. Contact Two Bears Air for hoist capable mission 3. Move patient to extraction point for extraction 4. If necessary, ground-transport patient off fire-line to airport in Plains Mt for intercept with LifeFlight 							
Helicopter Landing Zones							
Landing Zone:	Coordinates:		Landing Zone:	Coordinates:			
H-5/DP16 Zulu	Lat 47°36.338'	Long 155°18.675'					
Plains Airport	Lat 47°47.4742'	Long 114° 90.859'					

Logistics Schedule

Food

- Coffee – (0500-0900)
- Breakfast – (0600-0900)
- Lunch – Sack available
- Dinner – (1800-2100)

Shower Schedule

- 0500-1200 and 1400-2300

Laundry Options *“The Wash Tub, 202 Willis Street, Plains, MT”*

- Coin Laundry service 0700 – 2000 (406-210-8873)



Quiet Time Schedule

- 2100 – 0500 (8 hour work rest timeframe)

Ordering Process

- 0600-1900 daily

** If you are ordering Overhead, Equipment, Crews and Local Purchases make sure to submit through the Ordering Manager and if you have NFES Supply orders make sure you run those over to the supply unit to be filled or ordered.



West Lolo Finance Procedure

Finance Email: 2021.westlolo.finance@firenet.gov

Directions for emailing Documents:

<p>Contract Resources Send To: 2021.westlolo.finance@firenet.gov SUBJECT: Include Key Word: Equipment</p>	<p>Overhead, Crews, and Cooperator Resources Send To: 2021.westlolo.finance@firenet.gov SUBJECT: Include Key Word: Time</p>
--	---

DOCUMENTS TO EMAIL TO FINANCE

	<p>Overhead, Crews, and Cooperator Resources</p>	<p>Regular Government Personnel & ADs / Cooperator attachments: Check-In: Crew Manifests, MOUs, or Cooperative Agreement (if applies), AD Single Hire Sheet/RO Daily: Crew Time Report (CTR), Shift Ticket (<i>when applies</i>), receipts(fuel issues, TV receipts, etc.) @Demob: Signed OF288, Final Equipment Use Invoice (Cooperator), Demob Sheet</p>
	<p>Contract Resources</p>	<p>Private: Contractor Attachments: @Check-In: Resource Oder, Full Contract/Agreement, Certifications (<i>if required</i>), Pre-Inspection Daily: <u>SHIFT Tickets</u>, receipts (fuel issues, claims, etc.) @Demob: Contractor Evaluations, Final Shift Tickets and receipt for Addition/Deductions, Post-Inspection, Final Signed Invoices, DemobCheckout Sheet (<i>ICS 221</i>)</p>

FINANCE DEMOB PROCEDURES

All Resource will be sent their **DRAFT OF-288/OF-286's** via the Finance email. 12 hours will be provided to allow the resource to review their document and reply back to Finance with the statement "No Corrections Necessary" or a description of any issues. After Finance receives the email, any discrepancies will be resolved. Next, the resource is sent the **FINAL DOCUMENT** for signature. They will then email the signed document back to Finance, if able. If you are unable to sign, respond to that effect and we will digitally sign on your behalf. Finance will then sign the **FINAL DOCUMENT** and email it back to the resource. This completes the process.



HUMAN RESOURCE MESSAGE



Choose Kindness!

Today you could be standing next to someone who is trying their best not to fall apart.

So, whatever you do today, do it with kindness in your heart.

Debby Hassel - HRSP

(979) 255-5513

hrspfire@gmail.com



Training Message

Check In – If you have a position task book (PTB), scan the Master QR code to get to the training QR code. There you initiate the check in process with the Incident Training Specialist. Don't forget to email a copy of your qualification card and position task book cover to Robbie Hollingsworth at 2021.westlolo.plans@firenet.gov

Trainee Demob - In order to receive credit for your assignment, you must close out with the Incident Training Specialist prior to departure.

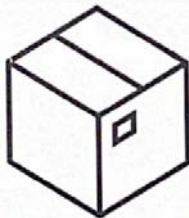
Close out requirements include:

1. Ensure your trainer(s)/evaluator(s) has/have initialed completed tasks in your PTB.
2. Obtain an Incident Performance Rating (please sign in the appropriate block at the bottom of the form)
3. Obtain an Evaluation record
4. If evaluator initialed #1 on your Evaluation Record, ensure he/she signs as final evaluator (located on the backside of your PTB cover page)
5. Close out with TNSP and email all documentation (including item #4, When appropriate) to 2021.westlolo.plans@firenet.gov



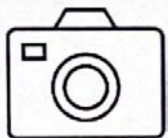
Southern Area Incident Management Gold Team Fire Information

Need something shipped to firecamp? Use the following address only:



Attention: West Lolo Complex Fire Camp
[Your Name]
83 Helterline Road
Plains, Montana 59859

Lost and Found: Turn in lost items and claim items lost at the Information Officer tent!



Photos can be texted to Public Information Officer Brook Smith at: 865-603-5217

<https://inciweb.nwcg.gov/incident/7620>

<https://www.facebook.com/WestLoloComplex/>

OR [scan the QR code with your phone's camera!]

OR [scan the QR code with your phone's camera!]



Steps in the Demob process

- **Note of your demob date listed in the IAP, inform your incident supervisor if that date is wrong, so they can contact demob to update.**
- If you have relief operators replacing timing out operators, use the QR code below and we will adjust the demob date for that equipment.
- If you need an airline flight, USE THE QR code below, call or email demob to schedule a flight at least 3 days before your demob date. You will likely need to demob on your last work day to drive to Missoula or other departure cities to fly on your demob date.
- Return all accountable property to the Supply Unit, and/or Communications.
- Have equipment inspected at Ground Support and go through Weed Wash.
- Submit CTRs/Shift Tickets and FINALIZE your OF-288/OF-286.
- Scan the QR code below to provide travel info if Driving. **We need you to provide your ETD/ETA, and RON city, if taking more than one day to drive home.**

Demob Contact: Jeff DeMatteis, 720-441-8211

Email: 2021.westlolo.demob@firenet.gov

QR Code for Air Travel



QR Code for Driving



QR Code for Operator Swaps



5 DAY DEMOB PLANNER

If you are on this list or not on this list in error, or a date is wrong, please ask your incident supervisor to get in touch with Demob.

DEMOB DATE	REQ #	RESOURCE NAME	KIND	TRV	CITY	STATE
08/19/2021	E-189	COLORADO RIVER FIRE	ENG6	AOV	RIFLE	CO
08/19/2021	E-192	LEVIATHAN, INC.	WTS1	POV	BONNER	MT
08/19/2021	O-287	WHITENER, DAVID L	HMGB	AOV	DAYTONA BEACH	FL
08/19/2021	O-388	HUGHES, BRANDON C	SOF2	AR	BLACKSBURG	VA
08/19/2021	O-415	DRENNAN, CHARLES R	COMT	REN	DENVER	CO
08/19/2021	O-423	ASHFORD, JONATHAN DAVID	PIO2	AOV	LITTLETON	CO
08/19/2021	O-469.46	BLANKS, GREGORY	SECM	AR	SAVANNA	GA
08/19/2021	O-519	POOLE, DAN	TFLD	AOV		MT
08/20/2021	E-180	RED DOG WILDFIRE SERVICES	ENG6	POV	HAMILTON	MT
08/20/2021	E-9004	ENG6 - MS E-643	ENG6			
08/20/2021	O-424	HICKMAN, GREGORY D	ABRO	REN	NEOSHO	MO
08/20/2021	O-426	HIGEONS, TIM A	EMTF	AR	TULSA	OK
08/20/2021	O-433	HANCOCK, MATTHEW GARRETT	EQPM	AIR	SMITHVILLE	TN
08/20/2021	O-441	ANDERSON, JOEL	HMGB	POV	KALISPELL	MT
08/20/2021	O-446	MACLAY-SCHULTE, DAVE	DIVS	AOV	MISSOULA	MT
08/21/2021	O-482	WEBSTER, JILL ANNETTE	THSP	REN	MISSOULA	MT
08/22/2021	C-37	MONTANA NATIONAL GUARD #2	HC2	BUS	HELENA	MT
08/22/2021	C-38	MONTANA NATIONAL GUARD #3	HC2	BUS	HELENA	MT
08/22/2021	E-39	BIGFOOT SKG1	SKG1	POV	LIBBY	MT
08/22/2021	E-156	GYP SUM FPD	ENG6	AOV	GYP SUM	CO
08/22/2021	O-289	MURPHY, MCINTYRE	GISS	AOV	PLAINS	MT
08/22/2021	O-337	BEMELLEN, MARK ANTHONY	COMT	REN	DENVER	CO
08/22/2021	O-399	YOUNG, CHRISTOPHER CURTIS	CRWB	BUS	HELENA	MT
08/22/2021	O-401	MCGLONE, DANIEL P	CRWB	REN	HELENA	MT
08/22/2021	O-404	VESCE, BRYAN MATHEW	CRWB			MT
08/22/2021	O-405	MUNK, ZAKARY TY	CRWB			UT
08/22/2021	O-406	FLICK, JUSTICE JERRY WILLIAM	FFT1	REN	HELENA	MT
08/22/2021	O-407	CHARLESWORTH, WIATT	FFT1			UT
08/22/2021	O-431	DIAMOND, COLE J	FFT1			UT
08/22/2021	O-442	HELFRICH, TRAVIS	HECM	AOV	TUSAYAN	AZ
08/22/2021	O-447	BARCLAY, CHARLES S	HEBM	POV	TOBACCOVILLE	NC
08/22/2021	O-468	STEVENS, SETH THOMAS	FFT1		HELENA	MT
08/22/2021	O-495	DEROCHE, RONALD CHARLES	HECM	AR	WINNIE	TX
08/23/2021	E-40	A-1 FIRE SVC	SKG2	POV	LOLO	MT
08/23/2021	E-55	TRAVERS	DOZ3	POV	THOMPSON FALLS	MT
08/23/2021	O-280	CASTRO JR, RAYMOND NO	RADO	AOV	YUMA	AZ
08/23/2021	O-421	CARSON, CARTY J	BCMG	AOV	LAS CRUCES	NM
08/23/2021	O-440	RESCUE 286 JOYCE, CARL WESLEY	EMTF	AOV	LITTLETON	CO

West Lolo Complex Documentation Process

1. Name files in accordance with the standardized NWCG naming conventions:

{DocType}_{Version}_{Date}_{IncidentNumber}

EXAMPLE: UNIT DAILY LOGS – ICS 214

214_HowellJocelyn_20210814_000893

2. File your docs in the "eDoc Box". Pick 1 of the following methods:

A. Drop them daily into the 'eDoc Box' in the General Channel under 'INBOX for Documentation'.

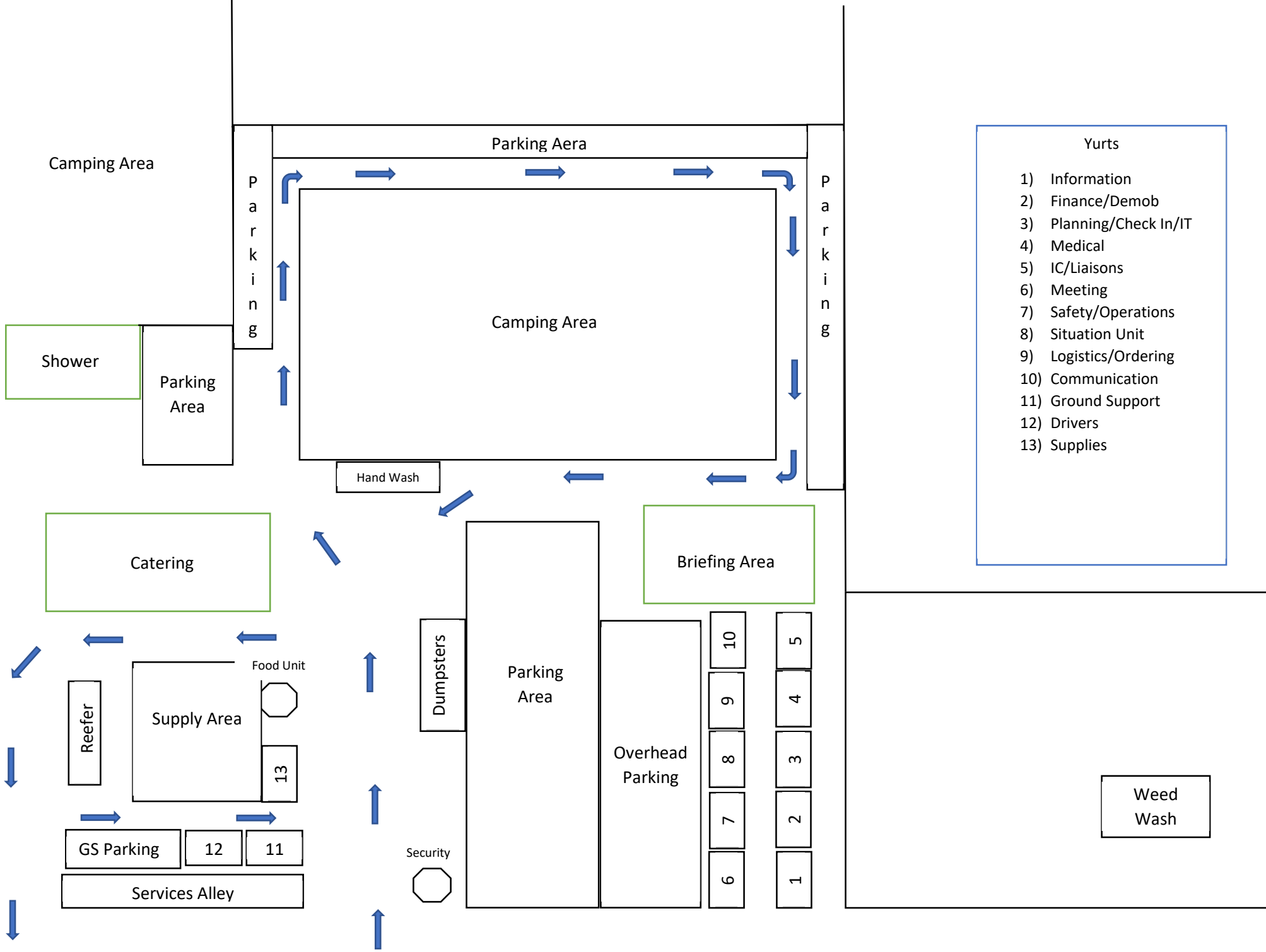
B. Email them daily to jocelyn_howell@firenet.gov

All documentation will be filed electronically in TEAMS for the West Lolo Complex. There are no paper copies or paper doc boxes. If you need to scan files, there is one available in the Plans room at ICP. If you have questions about what to file or how, please reach out!

Questions about the process? Need help?

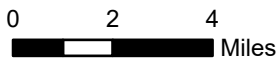
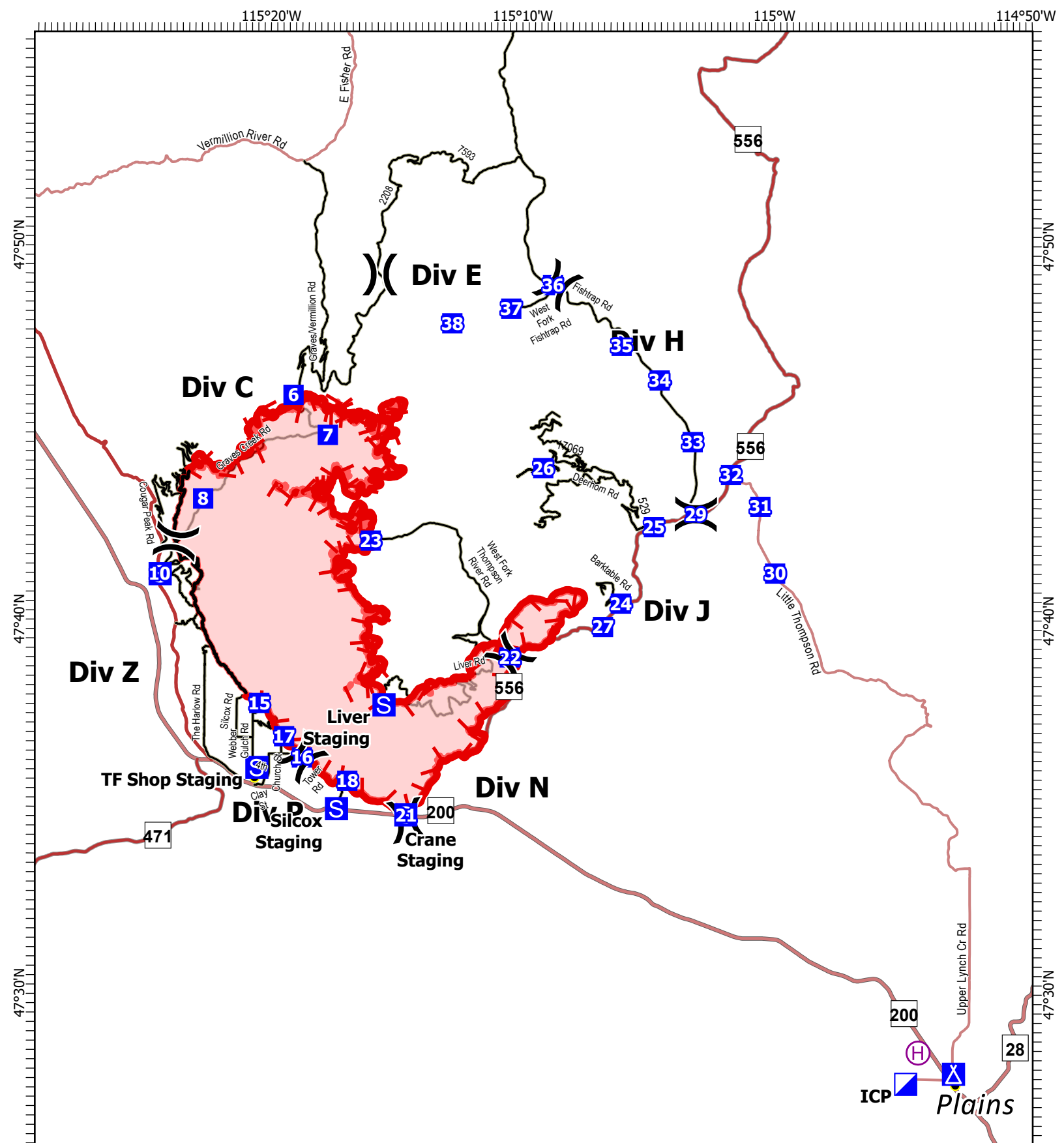
Jocelyn Howell- DOCL(t)

jocelyn_howell@firenet.gov or 214-934-0138



- Yurts**
- 1) Information
 - 2) Finance/Demob
 - 3) Planning/Check In/IT
 - 4) Medical
 - 5) IC/Liaisons
 - 6) Meeting
 - 7) Safety/Operations
 - 8) Situation Unit
 - 9) Logistics/Ordering
 - 10) Communication
 - 11) Ground Support
 - 12) Drivers
 - 13) Supplies

Weed Wash



Created by: SA Gold Team
 8/18/2021 1646
 North American 1983 Datum. Lat/Long Grid

IAP Map

West Lolo Complex
 MT-LNF-000893
 8/19/2021 Day

38688 acres at 8/17/21 @ 1600

Gold Team Phone List

Position	Name	Phone	Position	Name	
COMMAND			Chief	Thomas Barrett - v	478-550-6372
Incident Commander	Debbie Beard	850-524-9966	Chief (t)	Kelly Russell	850-294-8400
Deputy Incident Commander	Marty Bentley	423-584-1682	Resource Unit Leader	Aerin Land	305-432-6695
Liaison Officer	Michael Wright	970-819-2890	Resource Unit Leader (t)	Jocelyn Howell	214-934-0138
Liaison Officer (t)	Robert Claybrook	859-490-0653	Status Check-In Recorder (t)	Paula Hensley	606-275-2140
Liaison Officer (t)	Jeffrey Gardner	706-260-6296	Status Check-In Recorder (t)	Kenneth Parker	770-468-5459
Covid Coordinator (t)	Bradley Cooper	318-451-5074	Situation Unit Leader	Terry Bowerman	423-552-3323
Public Information Officer	Michelle Burnett	803-920-6167	Incident Technology Supt Splst	Kevin Curry - v	732-684-2999
Public Information Officer	Andrew Gray - v	850-797-4824	Incident Technology Supt Splst (t)	Joshua Skidmore	662-891-3533
Public Information Officer (t)	Cathryn Dowd -v	828-412-1521	GIS Specialist	Ethan Robertson	912-512-3496
Public Information Officer (t)	Emily Cleaver -v	931-436-0080	GIS Specialist (t)	Clayton Cooley	601-270-8562
Public Information Officer (t)	Brook Smith	865-603-5217	Fire Behavior Analyst	Kelly Cagle	336-302-0343
Public Information Officer (t)	Tricia Boles	606-627-5398	Demobilization Unit Leader	Jeff DeMatteis	720-441-8211
Public Information Officer (t)	Ray Butler	865-250-8980	Training Specialist	Robbie Hollingsworth -v	601-300-1396
Public Information Officer (t)	Kari Hines	512-375-0354	LOGISTICS		
Public Information Officer (t)	Ginelle Heller	404-782-9894	Chief	Cameron Crisp	304-635-2035
Safety Officer	Paul Churchill	843-259-9884	Chief	Thomas Philipps	936-404-8451
Safety Officer	Richard Kelley	850-447-1344	Chief (t)	Carl Bauer	719-431-2905
Safety Officer	Shawn Dugger	850-508-7736	Chief (t)	Mark Eaton	850-570-9091
Safety Officer (t)	Jeffery Henderson	479-518-3162	Supply Unit Leader	Lemuel Cooksey	850-508-9097
Safety Officer (t)	Steve Gray	770-655-8002	Communications Unit Leader	George Rosenthal	936-707-1832
OPERATIONS			Communications Unit Leader (t)	Shannon Herring	470-201-9582
Chief	Jeffrey Schardt	706 280-5498	Ordering Manager	Sherri Kite	850-209-2150
Chief	Shawn Nagle	662-231-4024	Ordering Manager	Leigh Ostin	352-445-1366
Chief	Loy Elam	336-467-7254	Ground Support Unit Leader	Todd Waller	501-337-6308
Chief Field	Josh Graham	501-545-3088	Ground Support Unit Leader	Willard Stanley	850-635-1035
Chief	C Bertram Plante	252-475-4662	Equipment Manager (t)	Brian Truss	936-5464338
Chief (t)	Kevin Grodi	321-408-2728	Medical Unit Leader	Jeff Cummings	317-730-6653
Chief (t) Field	Matthew Johnson	870-415-0185	Medical Unit Leader	Scott Phillips	602-300-2156
DIVS	Greg Salansky	865-414-6461	Medical Unit Leader (t)	Sherri McDougal	715-783-0075
DIVS	Jason Klawinsky	936-520-8827	Facilities Unit Leader (t)	John Dunlap	850-545-8573
DIVS	Heath Thomas	479-667-2191	Receiving/Distribution Manager	Vince Mullins	850-694-8680
DIVS	Jared Nobles	352-625-2520	Receiving/Distribution Manager (t)	Randall Hamilton	606-864-4163
DIVS	Daniel Gore	478-456-8516	Security Manager	Joshua Hindman	509-366-8975
DIVS (t)	Matthew Moe	928-220-0043	FINANCE		
DIVS (t)	Brenton Holt	870-715-0402	Chief	Jason Gillis	912-314-9233
AIR OPERATIONS			Chief (t)	Laura Wilson	765-427-7564
Air Operations Branch Dir	Larry Trapp	307-320-6566	Cost Unit Leader	Tom Steele	770-363-3583
PLANNING			Cost Unit Leader (t)	Stacey Eaton	850-375-9464
Chief	Jessica Hollingsworth	601-966-0331	Comps/Claims	Terri McDonald -v	352-454-5385
Chief	Carol O'Bryan	903-263-8704	Time	Donna Bentley	706-474-3216

MEDICAL PLAN (ICS 206 WF)

Controlled Unclassified Information//Basic

Medical Incident Report

FOR A NON-EMERGENCY INCIDENT, WORK THROUGH CHAIN OF COMMAND TO REPORT AND TRANSPORT INJURED PERSONNEL AS NECESSARY.

FOR A MEDICAL EMERGENCY: IDENTIFY ON SCENE INCIDENT COMMANDER BY NAME AND POSITION AND ANNOUNCE "MEDICAL EMERGENCY" TO INITIATE RESPONSE FROM IMT COMMUNICATIONS/DISPATCH.

Use the following items to communicate situation to communications/dispatch.

1. CONTACT COMMUNICATIONS / DISPATCH (**Verify correct frequency prior to starting report**)

Ex: "Communications, Div. Alpha. Stand-by for Emergency Traffic."

2. INCIDENT STATUS: *Provide incident summary (including number of patients) and command structure.*

Ex: "Communications, I have a Red priority patient, unconscious, struck by a falling tree. Requesting air ambulance to Forest Road 1 at (Lat./Long.) This will be the Trout Meadow Medical, IC is TFLD Jones. EMT Smith is providing medical care."

Severity of Emergency / Transport Priority	<input type="checkbox"/> RED / PRIORITY 1 Life or limb threatening injury or illness. Evacuation need is IMMEDIATE <i>Ex: Unconscious, difficulty breathing, bleeding severely, 2° – 3° burns more than 4 palm sizes, heat stroke, disoriented.</i> <input type="checkbox"/> YELLOW / PRIORITY 2 Serious Injury or illness. Evacuation may be DELAYED if necessary. <i>Ex: Significant trauma, unable to walk, 2° – 3° burns not more than 1-3 palm sizes.</i> <input type="checkbox"/> GREEN / PRIORITY 3 Minor Injury or illness. Non-Emergency transport <i>Ex: Sprains, strains, minor heat-related illness.</i>	
Nature of Injury or Illness & Mechanism of Injury		<i>Brief Summary of Injury or Illness (Ex: Unconscious, Struck by Falling Tree)</i>
Transport Request		<i>Air Ambulance / Short Haul/Hoist Ground Ambulance / Other</i>
Patient Location		<i>Descriptive Location & Lat. / Long. (WGS84)</i>
Incident Name		<i>Geographic Name + "Medical" (Ex: Trout Meadow Medical)</i>
On-Scene Incident Commander		<i>Name of on-scene IC of Incident within an Incident (Ex: TFLD Jones)</i>
Patient Care		<i>Name of Care Provider (Ex: EMT Smith)</i>

3. INITIAL PATIENT ASSESSMENT: *Complete this section for each patient as applicable (start with the most severe patient)*

Patient Assessment: See IRPG page 106

Treatment:

4. TRANSPORT PLAN:

Evacuation Location (if different): *(Descriptive Location (drop point, intersection, etc.) or Lat. / Long.)* Patient's ETA to Evacuation Location:

Helispot / Extraction Site Size and Hazards:

5. ADDITIONAL RESOURCES / EQUIPMENT NEEDS:

Example: Paramedic/EMT, Crews, Immobilization Devices, AED, Oxygen, Trauma Bag, IV/Fluid(s), Splints, Rope rescue, Wheeled litter, HAZMAT, Extrication

6. COMMUNICATIONS: Identify State Air/Ground EMS Frequencies and Hospital Contacts as applicable

Function	Channel Name/Number	Receive (RX)	Tone/NAC *	Transmit (TX)	Tone/NAC *
COMMAND					
AIR-TO-GRND					
TACTICAL					

7. CONTINGENCY: **Considerations:** *If primary options fail, what actions can be implemented in conjunction with primary evacuation method? Be thinking ahead.*

8. ADDITIONAL INFORMATION: *Updates/Changes, etc.*

REMEMBER: Confirm ETA's of resources ordered. Act according to your level of training. Be Alert. Keep Calm. Think Clearly. Act Decisively.