

# Incident Action Plan



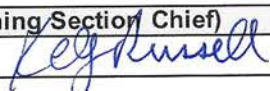
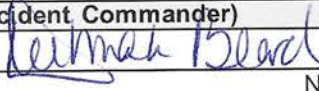
Operational Period  
Sunday 08/22/2021 0600 - 2100

West Lolo Complex  
MT-LNF-000893  
P1N5AN (0116)

[2021.westlolo.finance@firenet.gov](mailto:2021.westlolo.finance@firenet.gov)

Incident Information



<b>INCIDENT OBJECTIVES</b>	1. Incident Name <b>West Lolo Complex</b>	2. Date Prepared 8/2/2021	3. Time Prepared 1500
	<b>4. Operational Period</b> Sunday August 22, 2021 0600 - Sunday August 22, 2021 2100		
<b>5. Leader's Intent</b>			
<ul style="list-style-type: none"> <li>Protect the identified values at risk utilizing full suppression strategies identified by Agency Administrators in alignment with their prioritization of specific values. Risk management tools will be used to evaluate tactics in order to provide for firefighter and public safety while implementing actions that have a high probability of success.</li> <li>The highest priority on this incident is to protect the safety of fire personnel and to protect human life followed by the protection of structures. Ensure LCES is known and understood by everyone, and contingencies and trigger points for disengagement are developed and followed.</li> <li>Maintain a positive and inclusive workplace where all employees are valued and treated with respect.</li> </ul>			
<b>6. Incident Objectives</b>			
<ul style="list-style-type: none"> <li>Address the safety of firefighters, aviation and public through clear communication. Ensure an understanding of strategies and tactics, including a clearly defined and obtainable end state, in order to facilitate sound risk mitigation decision making.</li> <li>Natural and Cultural Resource Values at Risk: Weigh potential suppression actions in consideration of heritage resources, waterways and riparian areas, and bull trout and anadromous fish habitat in order to minimize fire effects and undesirable suppression related effects to these values.</li> <li>Continue to develop and implement the long-term plan for fires in the complex that incorporate management actions in alignment with the protection of identified values, based on current and expected weather and fire behavior. The long-term plan will incorporate primary, alternate, contingency, and emergency plans identifying opportunities for both direct and indirect suppression actions.</li> <li>Maintain and strengthen relationships with the Lolo and Kootenai National Forests; MT DNRC; Sanders County Sheriff, Emergency Managers, and VFD's; community leaders; cooperators; local government and agencies; and private landowners utilizing the most effective platforms available.</li> <li>Provide timely, accurate, and consistent incident information through the press, community meetings, trap lines, briefings and social media. Incident information shall be coordinated between the team and Forest Service Line Officers, MT DNRC Unit Manager, and the Sanders, Missoula, and Clearwater Sheriff Offices.</li> <li>Continue to monitor costs and implement cost effective methods for accomplishing operational objectives.</li> <li>Ensure adherence to current guidance regarding COVID-19 to provide for the health and safety of all incident personnel by implementing the module-of-one concept, social distancing, and masking up as appropriate.</li> </ul>			
<b>7. Attachments</b> (X – if attached)			
<input checked="" type="checkbox"/> Organization List - ICS 203	<input checked="" type="checkbox"/> Medical Plan - ICS 206	<input type="checkbox"/>	_____
<input checked="" type="checkbox"/> Division Assignment Lists - ICS 204	<input checked="" type="checkbox"/> Unit Log 214	<input type="checkbox"/>	_____
	<input checked="" type="checkbox"/> WF206 8 Line	<input type="checkbox"/>	_____
<b>8. Prepared By (Planning Section Chief)</b>		<b>9. Approved By (Incident Commander)</b>	
Kelly Russell, PSC2 (t) 		Debbie Beard, IC 	
ICS 202		NFES 1326	

## ORGANIZATION ASSIGNMENT LIST (ICS 203)

<b>1. Incident Name:</b>		<b>2. Operational Period:</b>	
WEST LOLO COMPLEX		Date/Time From: 08/22/2021 0600      SUN	Date/Time To: 08/22/2021 2100      SUN
<b>3. Incident Commander(s) and Command Staff:</b>		RCDM	
IC/UC	DEBORAH BEARD, MARTY BENTLEY	VINCE MULLINS, R. HAMILTON (T)	
INFORMATION OFFICER	MICHELLE BURNETT, A. GRAY -V, R. BIBLE, C. DOWD (T) -V, E. CLEAVER (T) -V, B. SMITH (T), T. BOLES (T), R. BUTLER(T), K. HINES (T), G. HELLER (T),	FACILITIES UNIT	STEVE WEHERLEY, JOHN DUNLAP (T)
LIAISON OFFICER	MICHAEL WRIGHT, JEFFREY GARDNER (T), BRADLEY COOPER (T)	BASE CAMP MANAGER	CARTY CARSON
SAFETY OFFICER	PAUL CHURCHILL, B. KELLEY, S. DUGGAR, L. HOLSOMBACK, B. HOGGE, J. HENDERSON (T), S. GRAY (T)	GROUND SUPPORT UNIT	TODD WALLER, WILLARD STANLEY
COVID COORDINATOR	ROBERT CLAYBROOK (T)	EQUIPMENT MANAGER	LANTON CHUMLEY, KEELY BENSON(T),BRIAN TRUSS (T)
<b>4. Agency/Organization Representative(s):</b>		FOOD UNIT	TOM PHILIPPS, CARL BAUER (T)
<b>Agency/Organization</b>	<b>Name</b>	COMMUNICATIONS UNIT	GEORGE ROSENTHAL, SHANNON HERRING (T)
LNF AA	CAROLYN UPTON	MEDICAL UNIT	JEFF CUMMINGS, JEFF HATCH, SHERRI MCDUGAL (T)
WEST LOLO AREP	DAVE WROBLESKI, MIKE FEIGER	<b>7. Operations Section:</b>	
LNF COVID SUPPORT	AMY CARMICHAEL	DAY OPS CHIEF	JEFFREY SCHARDT
READ	ANN HADLOW, M. MUELLER, M. KALINA, K. RICHARDSON, E. VANDERBEEK	FIELD OPS	JOSH GRAHAM, BERT PLANTE (T)
IBA	DEBBY WESSELIUS, ERIN LALLY (T)	PLANNING OPS	SHAWN NAGLE, MATT JOHNSON (T)
<b>5. Planning Section:</b>		SWING OPS CHIEF	BRIAN ELAM
CHIEF	JESSICA HOLLINGSWORTH, CAROL O'BRYAN, THOMAS BARRETT -V, KELLY RUSSELL (T)	STRUCTURE PROTECTION	KEVIN GRODI (T)
SITUATION UNIT	TERRY BOWERMAN, E. ROBERTSON (T), LAILA LIENESCH (T)	DIVISION/GROUP	CHARLIE/ZULU/PAPA      GREG SALANSKY
FIRE BEHAVIOR ANALYST	KELLY CAGLE	DIVISION/GROUP	ECHO      DANIEL HELTERLINE
GIS SPECIALIST	CLAY COOLEY (T)	DIVISION/GROUP	HOTEL      JEFF MUENSTER
DEMOBILIZATION UNIT	JEFF DEMATTEIS	DIVISION/GROUP	JULIET      HEATH THOMAS, MATT HUNDT (T)
RESOURCES UNIT	M. SELLERS, A. LAND, J. HOWELL (T)	DIVISION/GROUP	NOVEMBER      JASON KLAWINSKY, MATTHEW MOE (T)
STATUS CHECK-IN	KEN PARKER (T), PAULA HENSLEY (T)	DIVISION/GROUP	IA      JARED NOBLES, BRENTON HOLT (T)
ITSS	KEVIN CURRY -V, JOSH SKIDMORE (T)	DIVISION/GROUP	REPAIR      DANNY GORE
HR SPECIALIST	DEBBY HASSEL	DIVISION/GROUP	SECURITY      JOSHUA HINDMAN
TRAINING SPECIALIST	ROBBIE HOLLINGSWORTH -V	<b>7b. Air Operations Branch:</b>	
INCIDENT METEOROLOGIST	MIKE OTTENWELLER	AOBD	LARRY TRAPP
<b>6. Logistics Section:</b>		AIR SUPPORT SUPERVISOR	CHARLES BARCLAY (T)
CHIEF	CAMERON CRISP, T. PHILIPPS, M. EATON (T), C. BAUER (T)	AIR SUPPORT SUPERVISOR	ALBERT FARIA
ORDERING MANAGER	LEIGH OSTIN, SHERRI KITE	<b>8. Finance/Administration Section:</b>	
SUPPLY UNIT	LEMUEL COOKSEY	CHIEF	JASON GILLIS, LAURA WILSON (T)
<b>9. Prepared By:</b>		TIME UNIT	COLLEEN GADD -V, D. BENTLEY -V
<b>Name:</b>	AERIN LAND	COMPENSATION UNIT	TERRI MCDONALD -V
<b>Position/Title:</b>	RESL	COST UNIT	TOM STEELE, STACEY EATON (T)
<b>Signature:</b>		EQ TIME	KELLEY REEVES-V
<b>ICS 203</b>	<b>IAP Page</b>	<b>Date/Time:</b>	08/21/2021 0816



## Fire Weather Forecast

FORECAST NO: 43  
PREDICTION FOR: Sunday Day Shift  
SHIFT DATE: August 22, 2021  
FORECAST ISSUED: 1800 August 21, 2021

NAME OF FIRE: West Lolo Complex  
UNIT: MT-LNF / Srn. Area Gold Team  
Phone Number: (616) 450-5002  
Incident Meteorologist: Mike Ottenweller

---

**WEATHER DISCUSSION:** Some patchy fog in the morning will quickly burn off and allow for increasing sunshine. This will allow for temperatures to quickly climb into the 70s and RHs to drop to some of the lowest values in days. West winds will be breezy, with the ridges gusting as high as 30 mph and gusts to 15 mph down in the lower portions of DIVs J and N. The warming and drying trend will continue on Monday. The winds could potentially be even gustier on Monday. Temperatures will remain mild with mostly dry conditions to start the week.

**WEATHER FORECAST FOR TODAY (SUNDAY):**

**SKY/WEATHER:** Drying, warming, and breezy. Partly cloudy becoming mostly sunny.

**Max Temperature:** 70-75 in valleys. 63 to 68 higher elevations.

**Min RH:** Lower elevations 25-35%. Ridges 35-45%.

**WINDS:**

**-20 ft Level-WINDS**

**Lower Valleys/Lower Slopes:** W 4-8 mph increasing to 6-11 mph. Gusts to 15 mph in the afternoon.

**Upper Ridges:** SW 12-22 mph. Gusts to 30 mph, diminishing in the afternoon.

**-TRANSPORT WINDS:** SW 25 mph. **Mixing Height:** 8,000 ft.

**Haines:** 2    **LAL:** 1    **CWR:** 0

**TONIGHT:**

**SKY/WEATHER:** Clear.

**Min Temperature:** Lower elevations 47 to 52. Ridges 51 to 55.

**Max RH:** Lower elevations: 70-80%. Ridges: 55-65%.

**WINDS:**

**-20 ft Level-**

**Valleys/Lower Slopes:** W 6-11 mph with gusts to 15 in the evening becoming light/terrain driven.

**Upper Ridges:** SW 10-20 mph.

**MONDAY:**

**SKY/WEATHER:** Drying and windy.

**Max Temperature:** 73-78 in valleys. 64 to 69 higher elevations.

**Min RH:** Lower elevations 20-30%. Ridges 28-37%.

**WINDS:**

**-20 ft Level-WINDS**

**Lower Valleys/Lower Slopes:** W 4-8 mph increasing to 6-11 mph. Gusts to 18 mph in the afternoon.

**Upper Ridges:** SW 10 to 15 mph increasing to 12-22 mph. Gusts to 30 mph.

**-TRANSPORT WINDS:** SW 20 mph. **Mixing Height:** 8,000 ft.

**Haines:** 2    **LAL:** 1    **CWR:** 0%.

**Outlook Tuesday through Thursday:** Fairly dry and seasonable fair is in store for the week ahead. Temperatures will slowly climb back into the 80s with periods of gusty winds. The next chance for any substantial rainfall does not look to be until at least late in the week.

**FIRE BEHAVIOR FORECAST**

<b>FORECAST NUMBER:</b> #37	<b>TYPE OF FIRE:</b> Wildland
<b>FIRE NAME:</b> West Lolo Complex	<b>OPERATIONAL PERIOD:</b> 8/22/2021 Day Shift
<b>DATE ISSUED:</b> 08/21/2021	<b>TIME ISSUED:</b> 2000
<b>UNIT:</b> Lolo National Forest	<b>WRITTEN:</b> <i>Kelly Cagle</i> - FBAN

**FUEL ASSUMPTIONS:** The major fuel type found on the West Lolo Complex is fuel model 10 (mixed conifer with heavy dead/down). There are also areas of TU 5 – which is timber with a shrub component underneath. Fuel arrangement may be a blend of these 2 conditions. There are areas of fuel model 2 (grass with timber overstory) in the lowest elevations.

**WEATHER SUMMARY: Reference fire weather forecast for specifics:** Some patchy fog in the morning will quickly burn off and allow for increasing sunshine. This will allow for temperatures to quickly climb into the 70s and RHs to drop to some of the lowest values in days. West winds will be breezy, with the ridges gusting as high as 30 mph with gusts to 15 mph down in the lower portions of DIVs J and N.

**General Fire Behavior Forecast:** Expect minimal fire behavior today. Fuels remain very wet from yesterday's precipitation. Isolated smokes are possible around the fire area today – especially during the afternoon as things begin to dry out. Heavy fuels will likely continue to smolder. Grass fuels on a sunny slope could dry to the point of minimally carrying fire. Little in the way of forward spread is expected. A torching tree might be possible.

**Critical fire behavior thresholds:**

**RH below 25%      Winds greater than 10      1000 hr FM less than 12%      Haines 5 or 6**

**Specific:**

**Division November** – Expect minimal fire behavior. Most fuels will be wet and will not carry fire. Some heavies are still consuming and may produce light smoke. Grass fuels might minimally carry fire on a sunny slope late in the day. A torching tree might be possible.

**Division Echo/Hotel/Juliet**– Expect minimal fire behavior. Timber fuels will be too wet to carry fire. Grass fuels on a sunny slope could minimally carry fire late shift. Heavies will continue to produce isolated smokes. A torching tree might be possible.

Divisions **Charlie/Papa/Zulu** – Expect minimal fire behavior. This division had the most precipitation and likely will not carry fire of any kind today. Heavies might continue to produce a minor amount of smoke. A torching tree might be possible.

**Initial Attack** – Low potential for IA activity today. If IA occurs, expect minimal fire behavior.

\*\*\*\*\*

Fine fuel moisture today is -	Damp	Rates of Spread in Timber-	None expected
Probability of Ignition today -	Low	Rates of Spread in Grass-	1 to 3 chains/hour
Max Spotting Distance Today-	Low potential/short	Flame Lengths-	Low

**AIR OPERATIONS** : Fog possible early. Skies should be clear and suitable for aviation activities once fog clears.

**FIRE BEHAVIOR SAFETY:** Breezy conditions return today. If working in fire damaged timber, monitor for snags and assess their condition before working near one. Snag fall is more likely on a breezy day.

**Division/Group Assignment List (ICS 204 WF)**  
**Controlled Unclassified Information//Basic**

<b>1. Incident Name:</b>			<b>3.</b>			
WEST LOLO COMPLEX			<b>Branch:</b>		<b>Division/Group</b>	
<b>2. Operational Period:</b>			<b>THORNE</b>		<b>C/Z/P</b>	
Date/Time From: 08/22/2021 0600      SUN	Date/Time To: 08/22/2021 2100      SUN					
<b>4. Operations Personnel</b>						
<b>OPERATIONS CHIEF</b>		JEFF SCHARDT		<b>BRANCH DIRECTOR</b>		
<b>DIVISION/GROUP SUPERVISOR</b>		GREG SALANSKY		<b>AIR ATTACK SUPERVISOR</b>		
<b>5. Resources Assigned this Period</b>						
Strike Team / Task Force / Resource Designator		LWD	Leader	Number Persons	Drop Off PT./Time	Pick Up PT./Time
UNSTAFFED						
<b>6. Control Operations/Work Assignments:</b>						
<p><u>TASK:</u> Monitor fire activity and spread. Maintain coordination and public relations with private landowners in fire impacted area. Assess suppression repair. Backhaul trash and unneeded equipment .</p> <p><u>PURPOSE:</u> To have control features in place that have the highest probability of success for incident resources. Maintain positive relationships with private landowners and cooperators during suppression operations.</p> <p><u>END STATE:</u> The fire is contained at the established control features with minimal impacts to private property, natural resources and values at risk. Local relationships are strengthened through timely communications, cooperation and coordination.</p>						
<b>7. Special Instructions:</b>						
Bert Plante (Day-Field Operations Section Chief Trainee) will be compiling and coordinating all Suppression Repair Plan taskings. Please contact Bert at 252-475-4662.						
<b>8. Division/Group Communication Summary</b>						
Function	Channel	RX Frequency N/W	RX Tone/NAC	TX Frequency N/W	TX Tone/NAC	Mode
COMMAND	9	171.0625	136.5	163.8250	136.5	
TACTICAL	6	168.2500	136.5	168.2500	136.5	
AIR TO GROUND	11	167.9000		167.9000		
<b>9. Prepared By (Resource Unit Leader)</b>			<b>Approved By (Planning Section Chief)</b>		<b>Date</b>	<b>Time</b>
JOCELYN HOWELL RESL (T)			KELLY RUSSELL - PSC2(T)		08/21/2021	0816

**Division/Group Assignment List (ICS 204 WF)**  
**Controlled Unclassified Information//Basic**

<b>1. Incident Name:</b>			<b>3.</b>			
WEST LOLO COMPLEX			<b>Branch:</b>		<b>Division/Group</b>	
<b>2. Operational Period:</b>			<b>THORNE</b>		<b>E</b>	
Date/Time From: 08/22/2021 0600      SUN	Date/Time To: 08/22/2021 2100      SUN					
<b>4. Operations Personnel</b>						
<b>OPERATIONS CHIEF</b>		JEFF SCHARDT		<b>BRANCH DIRECTOR</b>		
<b>DIVISION/GROUP SUPERVISOR</b>		DAN HELTERLINE		<b>AIR ATTACK SUPERVISOR</b>		
<b>5. Resources Assigned this Period</b>						
Strike Team / Task Force / Resource Designator	LWD	Leader	Number Persons	Drop Off PT./Time	Pick Up PT./Time	
HEQB		DUSTIN WAGONER	1	ICP/0600	ICP/2100	
O-520 HEQB	09/01	DAN CASTILLO	1	ICP/0600	ICP/2100	
O-32 FMOD MILLER CREEK	08/23	PETE CLIFFORD	2	ICP/0600	ICP/2100	
E-55 DOZ3 TRAVER'S DOZER	08/23	BEN TRAVER	1	ICP/0600	ICP/2100	
E-223 EXCA2 TAYLOR SERVICES	09/03	JEFF MILLER	2	ICP/0600	ICP/2100	
E-217 MAST J G ENTERPRISE	09/02	TONY LAPKA	2	ICP/0600	ICP/2100	
O-469.6 SOF2	08/25	PAUL CHURCHILL	1	ICP/0600	ICP/2100	
O-469.54 SOF2 (T)	08/25	JEFF HENDERSON	1	ICP/0600	ICP/2100	
O-488 EMPF	09/02	ANDY BELCHER	1	ICP/0600	ICP/2100	
EMPF/UTV2	09/03	SMITH/AUGUSTIN	2	ICP/0600	ICP/2100	
<b>6. Control Operations/Work Assignments:</b>						
<p><b>TASK:</b> Continue "road as line" improvement along 7685 road system to Fishtrap Road. Continue scouting for control features that can check / slow fire spread north of Marmot Peak. Monitor fire behavior and movement. Coordinate line construction or improvement with incident READ</p> <p><b>PURPOSE:</b> Have continuous fuel break from Thompson River Road to Fishtrap to slow eastward progression of fire onto state and private lands. To establish indirect control features, with minimum impact to natural resources, that will be used to stop fire progression.</p> <p><b>END STATE:</b> Fire spread is limited and does not impact state/private lands. Values at risk are not impacted by fire.</p>						
<b>7. Special Instructions:</b>						
Bert Plante (Day-Field Operations Section Chief Trainee) will be compiling and coordinating all Suppression Repair Plan taskings. Please contact Bert at 252-475-4662.						
<b>8. Division/Group Communication Summary</b>						
Function	Channel	RX Frequency N/W	RX Tone/NAC	TX Frequency N/W	TX Tone/NAC	Mode
COMMAND	C41	171.8375	136.5	165.3875	136.5	
TACTICAL	3	168.6000	136.5	168.6000	136.5	
AIR TO GROUND	11	167.9000		167.9000		
<b>9. Prepared By (Resource Unit Leader)</b>		<b>Approved By (Planning Section Chief)</b>		<b>Date</b>		<b>Time</b>
JOCELYN HOWELL RESL (T)		KELLY RUSSELL - PSC2(T)		08/21/2021		0816

**Division/Group Assignment List (ICS 204 WF)**  
**Controlled Unclassified Information//Basic**

<b>1. Incident Name:</b>			<b>3.</b>			
WEST LOLO COMPLEX			<b>Branch:</b>		<b>Division/Group</b>	
<b>2. Operational Period:</b>			<b>THORNE</b>		<b>H</b>	
Date/Time From: 08/22/2021 0600      SUN	Date/Time To: 08/22/2021 2100      SUN					
<b>4. Operations Personnel</b>						
<b>OPERATIONS CHIEF</b>		JEFF SCHARDT		<b>BRANCH DIRECTOR</b>		
<b>DIVISION/GROUP SUPERVISOR</b>		JEFF MUENSTER		<b>AIR ATTACK SUPERVISOR</b>		
<b>5. Resources Assigned this Period</b>						
Strike Team / Task Force / Resource Designator	LWD	Leader		Number Persons	Drop Off PT./Time	Pick Up PT./Time
HC2IA LONESTAR STATE #1	09/02	LUKE KANCLERZ		19	ICP/0600	ICP/2100
C-55 NATIONAL GUARD #8	09/03				ICP/0600	ICP/2100
PTF MOD		BRITTNEY ALLESTAD		11	ICP/0600	ICP/2100
O-508 SOF2	08/25	BARRY HOGGE		1	ICP/0600	ICP/2100
O-528 EMPF	09/03	WALLACE		1	ICP/0600	ICP/2100
EMTF	09/03	GARCIA		1	ICP/0600	ICP/2100
<b>6. Control Operations/Work Assignments:</b>						
<p><u>TASK:</u>Continue scouting for alternate line location and control features that could check / slow fire spread north of Priscilla Peak. Monitor fire behavior and movement. Coordinate all line construction activities with incident READ. Utilize mechanical fuel reduction techniques along Fishtrap Road, within Forest Boundaries and Fishtrap Road right-of-way.</p> <p><u>PURPOSE:</u> Have continuous fuel break from Thompson River Road to Fishtrap to slow eastward progression of fire onto state and private lands. To establish indirect control features, with minimum impact to natural resources, that will be used to stop fire progression.</p> <p><u>END STATE:</u> Fire spread is limited and does not impact state/private lands. Values at risk are not impacted by fire.</p>						
<b>7. Special Instructions:</b>						
Bert Plante (Day-Field Operations Section Chief Trainee) will be compiling and coordinating all Suppression Repair Plan taskings. Please contact Bert at 252-475-4662.						
<b>8. Division/Group Communication Summary</b>						
Function	Channel	RX Frequency N/W	RX Tone/NAC	TX Frequency N/W	TX Tone/NAC	Mode
COMMAND	8	170.6875	136.5	166.5750	136.5	
TACTICAL	1	168.0500	136.5	168.0500	136.5	
AIR TO GROUND	11	167.9000		167.9000		
<b>9. Prepared By (Resource Unit Leader)</b>			<b>Approved By (Planning Section Chief)</b>		<b>Date</b>	<b>Time</b>
JOCELYN HOWELL RESL (T)			KELLY RUSSELL-PSC2(T)		08/21/2021	0816



**Division/Group Assignment List (ICS 204 WF)**  
**Controlled Unclassified Information//Basic**

<b>1. Incident Name:</b>			<b>3.</b>			
WEST LOLO COMPLEX			<b>Branch:</b>		<b>Division/Group</b>	
<b>2. Operational Period:</b>			<b>THORNE</b>		<b>J</b>	
Date/Time From: 08/22/2021 0600	SUN	Date/Time To: 08/22/2021 2100				
<b>4. Operations Personnel</b>						
<b>OPERATIONS CHIEF</b>		JEFF SCHARDT		<b>BRANCH DIRECTOR</b>		
<b>DIVISION/GROUP SUPERVISOR</b>		HEATH THOMAS MATT HUNDT (T)		<b>AIR ATTACK SUPERVISOR</b>		
<b>5. Resources Assigned this Period</b>						
Strike Team / Task Force / Resource Designator	LWD	Leader	Number Persons	Drop Off PT./Time	Pick Up PT./Time	
HC1 MT TAYLOR	09/01	VERNON JACKSON	14	ICP/0600	ICP/2100	
E-216 MAST AUKER BUILDING	09/02	JAMES AUKER	2			
E-40 SKG2 WILDFIRE SERVICES	09/03	WILLIAM CLAUSSEN	1	ICP/0600	ICP/2100	
O-469.5 SOF2	08/25	BUDDY KELLEY	1	ICP/0600	ICP/2100	
O-63 REMS1	08/26	MATT FOX	4	ICP/0600	ICP/2100	
E-200 AMBO#1 ALS	08/29	KARI TOMLINSON	2	ICP/0600	ICP/2100	
<b>6. Control Operations/Work Assignments:</b>						
<p><b>TASK:</b> Continue scouting for alternate line location and control features that could check / slow fire spread east of Priscilla Peak. Monitor fire behavior and movement. Coordinate any line construction activities with incident READ. Utilize mechanical fuel reduction techniques along Fishtrap Road, within Forest Boundaries and Fishtrap Road right-of-way. Mop up the slop over on mechanical line.</p> <p><b>PURPOSE:</b> Have continuous fuel break from Thompson River Road to Fishtrap to slow eastward progression of fire onto state and private lands. To establish indirect control features, with minimum impact to natural resources, that will be used to stop fire progression.</p> <p><b>END STATE:</b> Fire spread is limited and does not impact state/private lands. Values at risk are not impacted by fire.</p>						
<b>7. Special Instructions:</b>						
Bert Plante (Day-Field Operations Section Chief Trainee) will be compiling and coordinating all Suppression Repair Plan taskings. Please contact Bert at 252-475-4662.						
<b>8. Division/Group Communication Summary</b>						
Function	Channel	RX Frequency N/W	RX Tone/NAC	TX Frequency N/W	TX Tone/NAC	Mode
COMMAND	8	170.6875	136.5	166.5750	136.5	
TACTICAL	4	166.7250	136.5	166.7250	136.5	
AIR TO GROUND	11	167.9000		167.9000		
<b>9. Prepared By (Resource Unit Leader)</b>		<b>Approved By (Planning Section Chief)</b>		<b>Date</b>	<b>Time</b>	
JOCELYN HOWELL RESL (T)		KELLY RUSSELL - PSC2(T)		08/21/2021	0816	

**Division/Group Assignment List (ICS 204 WF)**  
**Controlled Unclassified Information//Basic**

<b>1. Incident Name:</b>			<b>3.</b>			
WEST LOLO COMPLEX			<b>Branch:</b>		<b>Division/Group</b>	
<b>2. Operational Period:</b>			<b>THORNE</b>		<b>N</b>	
Date/Time From: 08/22/2021 0600      SUN	Date/Time To: 08/22/2021 2100      SUN					
<b>4. Operations Personnel</b>						
<b>OPERATIONS CHIEF</b>		JEFF SCHARDT		<b>BRANCH DIRECTOR</b>		
<b>DIVISION/GROUP SUPERVISOR</b>		JASON KLAWINSKY MATT MOE (T)		<b>AIR ATTACK SUPERVISOR</b>		
<b>5. Resources Assigned this Period</b>						
Strike Team / Task Force / Resource Designator		LWD	Leader	Number Persons	Drop Off PT./Time	Pick Up PT./Time
TFLD (T)			CASEY CRAFT	1	ICP /0600	ICP/2100
TFLD		08/31	CODY JERMYN	1	ICP/0600	ICP/2100
O-33 FMOD SWEDBERG		08/25	ELIJAH SHOWN	2	ICP /0600	ICP/2100
E-9004 ENG6 MISSISSIPPI 643		09/02	JASON LEASER	3	ICP /0600	ICP/2100
E-227 ENG6 MT-KNF-E673		08/28	MURRAY	6	ICP /0600	ICP/2100
E-177 ENG6 GILA 621		08/28	DUSTIN ROGER	6	ICP /0600	ICP/2100
E-202 ENG6 WILDFIRE RESOURCES		09/03	GARY PALMER	2	ICP/0600	ICP/2100
E-226 DZ3 SORLIE		09/02	RICK SORLIE	2	ICP/0600	ICP/2100
E-138 WTS2 CAHOON		08/22	QUIRT CORNETT	1	ICP/0600	ICP/2100
O-475 SOF2		09/27	LARRY HOLSOMBACK	1	ICP /0600	ICP/2100
E-34 AMBO #3 ALS		08/31	SOPHIE HILL	2	ICP/0600	ICP/2100
<b>6. Control Operations/Work Assignments:</b>						
<p><b>TASK:</b> Monitor fire activity. Secure, cool and mop up fires edge at containment lines. Back haul excess water handling equipment. Maintain coordination and public relations with private landowners and cooperators.</p> <p><b>PURPOSE:</b> To have control features in place that have the highest probability of success for incident resources. Maintain positive relationships with private landowners and cooperators during suppression operations.</p> <p><b>END STATE:</b> The fire is contained at the established control features with minimal impacts to private property, natural resources and values at risk. Local relationships are strengthened through timely communication, cooperation and coordination.</p>						
<b>7. Special Instructions:</b>						
Bert Plante (Day-Field Operations Section Chief Trainee) will be compiling and coordinating all Suppression Repair Plan taskings. Please contact Bert at 252-475-4662.						
<b>8. Division/Group Communication Summary</b>						
Function	Channel	RX Frequency N/W	RX Tone/NAC	TX Frequency N/W	TX Tone/NAC	Mode
COMMAND	7	170.0000	136.5	166.6750	136.5	
TACTICAL	3	168.6000	136.5	168.6000	136.5	
AIR TO GROUND	11	167.9000		167.9000		
<b>9. Prepared By (Resource Unit Leader)</b>			<b>Approved By (Planning Section Chief)</b>		<b>Date</b>	<b>Time</b>
JOCELYN HOWELL RESL (T)			KELLY RUSSELL - PSC2(T)		08/21/2021	0816

**Division/Group Assignment List (ICS 204 WF)**  
**Controlled Unclassified Information//Basic**

<b>1. Incident Name:</b>			<b>3.</b>			
WEST LOLO COMPLEX			<b>Branch:</b>		<b>Division/Group</b>	
<b>2. Operational Period:</b>			<b>THORNE</b>		<b>IA</b>	
Date/Time From: 08/22/2021 0600	SUN	Date/Time To: 08/22/2021 2100				
<b>4. Operations Personnel</b>						
<b>OPERATIONS CHIEF</b>		JEFF SCHARDT		<b>BRANCH DIRECTOR/STSP</b>		KEVIN GRODI
<b>DIVISION/GROUP SUPERVISOR</b>		JARED NOBLES BRENTON HOLT (T)		<b>AIR ATTACK SUPERVISOR</b>		
<b>5. Resources Assigned this Period</b>						
Strike Team / Task Force / Resource Designator	LWD	Leader	Number Persons	Drop Off PT./Time	Pick Up PT./Time	
O-464 TFLD	08/25	STEPHAN OSMOND	1	ICP/0600	ICP/2100	
E-206 ENG3 HART VENTURES	08/30	RHYS VAN ANDERSON	3	ICP/0600	ICP/2100	
E-201 ENG3 MISSOULA CITY FIRE	08/31	STEVE FINNERTY	3	ICP/0600	ICP/2100	
E-156 ENG6 BRUSH	08/21	DAMIAN TROW	3	ICP/0600	ICP/2100	
E-199 ENG6 HART VENTURES	08/28	KYLE COLTON	3	ICP/0600	ICP/2100	
E-192 WTT1 LEVIATHAN	08/26	TRACEY SCOTT	1	ICP/0600	ICP/2100	
O-469.6 SOF2	08/25	PAUL CHURCHILL	1	ICP/0600	ICP/2100	
O-469.54 SOF2(T)	08/25	JEFF HENDERSON	1	ICP/0600	ICP/2100	
O-490 EMTF	08/31	JONAH MEYER	1	ICP/0600	ICP/2100	
<b>6. Control Operations/Work Assignments:</b>						
<p>Task: Serve as the primary responding suppression resources to any initial attack fires within the Temporary Flight Restrictions (TFR) as identified in the Delegation of Authority</p> <p>Purpose: Keep fire activity within the perimeter of initial attack fires</p> <p>End State: Fire is at least 90% contained and has not grown in size for one operational period</p>						
<b>7. Special Instructions:</b>						
<p>Kevin Grodi (Initial Attack Group Supervisor) will monitor Channel 13/Channel Name: Eddy for any initial attack needs within the Thorne Creek Fire Temporary Flight Restriction (TFR). Additionally, local USFS Duty Officer will contact Kevin Grodi via cell phone (321-408-2728) for any initial attack needs within or outside of the TFR. Kevin Grodi will notify Josh Graham (Day-Field Operations Section Chief) and Brian Elam (Swing-Field Operations Section Chief) of any initial attack activity.</p> <p>Bert Plante (Day-Field Operations Section Chief Trainee) will be compiling and coordinating all Suppression Repair Plan taskings. Please contact Bert at 252-475-4662.</p>						
<b>8. Division/Group Communication Summary</b>						
Function	Channel	RX Frequency N/W	RX Tone/NAC	TX Frequency N/W	TX Tone/NAC	Mode
COMMAND	7	170.000	136.5	166.6750	136.5	
TACTICAL	2	168.2000	136.5	168.2000	136.5	
AIR TO GROUND	11	167.9000		167.9000		
<b>9. Prepared By (Resource Unit Leader)</b>		<b>Approved By (Planning Section Chief)</b>		<b>Date</b>		<b>Time</b>
AERIN LAND - RESL		KELLY RUSSELL - PSC(T)		08/21/2021		0816

**Division/Group Assignment List (ICS 204 WF)**  
**Controlled Unclassified Information//Basic**

<b>1. Incident Name:</b>			<b>3.</b>			
WEST LOLO COMPLEX			<b>Branch:</b>		<b>Division/Group</b>	
<b>2. Operational Period:</b>			<b>THORNE</b>		<b>REPAIR GROUP</b>	
Date/Time From: 08/22/2021 0600      SUN	Date/Time To: 08/22/2021 2100      SUN					
<b>4. Operations Personnel</b>						
<b>OPERATIONS CHIEF</b>			<b>BRANCH DIRECTOR</b>			
<b>DIVISION/GROUP SUPERVISOR</b> DANNY GORE			<b>AIR ATTACK SUPERVISOR</b>			
<b>5. Resources Assigned this Period</b>						
Strike Team / Task Force / Resource Designator		LWD	Leader	Number Persons	Drop Off PT./Time	Pick Up PT./Time
O-465 TFLD		08/25	THEO JOHNSON	1	ICP/0600	ICP/2100
C-54 NATIONAL GUARD #7					ICP/0600	ICP/2100
O-440 EMTF		08/22	CARL JOYCE	1	ICP/0600	ICP/2100
E-214 AMBO #4 ALS		09/03	KEVIN MCMAHON	2	ICP/0600	ICP/2100
<b>6. Control Operations/Work Assignments:</b>						
<p>Task:Conduct: Repair operations on Federal and State lands to the standards set forth in the Repair delegation and follow the guidance provided across private lands.</p> <p>Purpose: To repair damage caused by fire suppression activities during the response to the wildfire.</p> <p>End State: As far as possible, return the landscape, to the state it was in, prior to the wildfire occurrence.</p>						
<b>7. Special Instructions:</b>						
<p>Bert Plante (Day-Field Operations Section Chief Trainee) will be compiling and coordinating all Suppression Repair Plan taskings. Please contact Bert at 252-475-4662.</p>						
<b>8. Division/Group Communication Summary</b>						
Function	Channel	RX Frequency N/W	RX Tone/NAC	TX Frequency N/W	TX Tone/NAC	Mode
COMMAND	7	170.0000	136.5	166.6750	136.5	
COMMAND	8	170.6875	136.5	166.5750	136.5	
COMMAND	9	171.0625	136.5	163.8250	136.5	
COMMAND	10	171.8375	136.5	165.3875	136.5	
TACTICAL	5	166.7750	136.5	166.7750	136.5	
AIR TO GROUND	11	167.9000		167.9000		
<b>9. Prepared By (Resource Unit Leader)</b>			<b>Approved By (Planning Section Chief)</b>		<b>Date</b>	<b>Time</b>
AERIN LAND - RESL			KELLY RUSSELL - PSC2(T)		08/21/2021	0816

**Division/Group Assignment List (ICS 204 WF)**  
**Controlled Unclassified Information//Basic**

<b>1. Incident Name:</b>			<b>3.</b>			
WEST LOLO COMPLEX			<b>Branch:</b>		<b>Division/Group</b>	
<b>2. Operational Period:</b>			<b>THORNE</b>		<b>SECURITY</b>	
Date/Time From: 08/22/2021 0600      SUN	Date/Time To: 08/22/2021 2100      SUN					
<b>4. Operations Personnel</b>						
<b>OPERATIONS CHIEF</b>				<b>BRANCH DIRECTOR</b>		
<b>DIVISION/GROUP SUPERVISOR</b>		JOSHUA HINDMAN		<b>AIR ATTACK SUPERVISOR</b>		
<b>5. Resources Assigned this Period</b>						
Strike Team / Task Force / Resource Designator	LWD	Leader	Number Persons	Drop Off PT./Time	Pick Up PT./Time	
O-472 SEC 1 DAY	09/06	JERALD FLOYD	1	ICP/0530	ICP/2200	
SEC1 - NIGHT	09/03	DARRIN SPEEGLE	1	ICP/0530	ICP/2200	
24-HOUR ROTATION						
O-367 NATIONAL GUARD		LT. WIDHALM	1	24-HOUR ROTATION/	24-HOUR ROTATION/	
O-367 NATIONAL GUARD NIGHT LEAD		SGT 1ST CLASS COFFMAN	1	24-HOUR ROTATION/	24-HOUR ROTATION/	
<b>6. Control Operations/Work Assignments:</b>						
<p><b>TASK:</b> Staff stationary control points and conduct law enforcement patrol of operational areas.  <b>PURPOSE:</b> To control ingress and egress points to operational area and provide federal law enforcement patrol of operational area to enforce closures and respond to law enforcement incidents.  <b>END STATE:</b> Maintain public and firefighter safety and security of assets assigned to the fire.</p>						
<b>7. Special Instructions:</b>						
<ul style="list-style-type: none"> <li>• Graves Roadblock - Soft closure</li> <li>• Weber Roadblock - Soft closure</li> <li>• Silcox- Soft closure</li> <li>• West Fork Staging Rd-Soft closure</li> <li>• Airport - Staffed 1900 - 0700</li> <li>• Fishtrap &amp; 556 Rd-Staffed 24HR with National Guard</li> <li>• 556 Rd at ACM RD staff 24 HR with National Guard</li> </ul> <p>For further information regarding road closures please contact the local Sheriff.</p>						
<b>8. Division/Group Communication Summary</b>						
Function	Channel	RX Frequency N/W	RX Tone/NAC	TX Frequency N/W	TX Tone/NAC	Mode
COMMAND						
TACTICAL						
LOGISTICS						
AIR TO GROUND						
<b>9. Prepared By (Resource Unit Leader)</b>			<b>Approved By (Planning Section Chief)</b>		<b>Date</b>	<b>Time</b>
AERIN LAND - RESL			KELLY RUSSELL - PSC2(T)		08/21/2021	0816



10. TASK/ MISSION/ ASSIGNMENT (Type/ function includes: Air Tactical, Retardant, Recon, Personnel Transport, Bucket Operations, SAR, etc.)					
TYPE/FUNCTION	PRIORITY	NAME OF PERSONNEL OR CARGO (If applicable) or instructions for tactical aircraft	MISSION START	FLY FROM	FLY TO
Buckets	1		As requested	Helibase	Fire
Recon/PSD/IR	2		As requested	Helibase	Fire
Slings	3		As requested	Helibase	Fire

Fires	Helibase, Dip Sites, Pick Up Sites, etc.
Thorne: N 47° 42.137' X W 115° 18.384'	Plains Helibase(S34): N 47° 28.51' X W 114° 53.96' Elevation: 2470'
	For a complete list see Ops Map:

**Other Assigned Support Equipment**

<p><b><u>REMINDER!!</u></b> A flight risk assessment (GAR) needs to be completed prior to daily missions</p> <p><b>Region 1 CWN Helicopter GAR</b></p>		Helibase Trailer Plains	E-81	
		Hotsy	S-27	
		Water Tender	E-122	
		LUA Plains	S-66	

**Wind Restrictions**

Flights above ground level	Flight Permitted in Winds Less than / Maximum Gust Spread		
	Type 1 Helicopters	Type 2 Helicopters	Type 3 Helicopters
More than 500' AGL	<50kts / Gusts: N/A	<50kts / Gusts: N/A	<50kts / Gusts: N/A
Less than 500' AGL	<40kts / Max Gust Spread: 15kts	<40 kts / Max Gust Spread: 15kts	<30kts / Max Gust Spread: 15kts



**HEALTH AND SAFETY MESSAGE**

***SAFETY is YOU & ME***

We are **ALL** accountable for **SAFE** behaviors

<b>INCIDENT:</b> West Lolo Complex	<b>DATE:</b> August 22, 2021
------------------------------------	------------------------------

**Major Hazards and Risks:** Driving, Snags, Demob, and Complacency

**Driving-** Drive defensively. Be alert to your surroundings. Lights on make you visible. Know your route of travel. Be alert for wildlife. When wildlife (deer, goat, etc.) crosses the road in front of you, expect others to follow.

**Snags/Fire Weakened Trees-** Trees have been through fire and multiple rain showers. Trees with weakened root systems may come down at any moment. Look up; Look down; and Look around.

**Demob-** Your assignment doesn't stop when you walk away from demob. Your final assignment is to arrive safely at home. The 2-to-1 work-rest policy applies.

**Complacency-** Keep your head in the game. There is still a lot of work to be done. There are still many hazards that we need to watch out for.

**SNAG SAFETY**

Environmental conditions that increase snag hazards:

- STRONG WINDS
- STEEP SLOPES
- DISEASED OR BUG-KILLED AREAS.

Hazard Tree indicators:

- TREES HAVE BEEN BURNING FOR EXTENDED PERIOD.
- HIGH RISK TREE SPECIES (rot and shallow root system)
- NUMEROUS DOWN TREES.
- DEAD OR BROKEN TOPS AND LIMBS OVERHEAD.
- ACCUMULATION OF DOWN LIMBS.
- ABSENCE OF NEEDLES, BARK OR LIMBS.
- LEANING OR HUNG-UP TREES.

**Heading Home**

- Drive defensively. Human nature ensures we are less patient when driving home; don't let impatience cause unsafe behavior.
- No driver will drive more than 10 hours within any duty-day.
- Multiple drivers in a single vehicle may drive up to 16 hours limitation provided no driver exceeds the individual driving time of 10 hours.
- Do not drive past 2200 hours. Do not eat and drive at the same time.
- Don't use cell phones while driving; pull off the road or call during your stretch breaks.

**Safety Officers:** Paul Churchill, Buddy Kelley, Shawn Duggar, Larry Holsomback, Barry Hogge, Steve Gray (T), and Jeff Henderson (T)



## INCIDENT SAFETY ANALYSIS 215a

West Lolo Complex - Sunday, August 22, 2021

8. Location	9. Hazard	6. Control or Abatement Action (Engineering, Administrative, PPE, Avoidance, Education, etc)
Incident	Air Operations	<ul style="list-style-type: none"> <li>~ Avoid transfer of risk from ground to aviation resources.</li> <li>~ Utilize safe and effective strategy and tactics. Involve pilot in mission planning. Conduct thorough risk assessment prior to mission.</li> <li>~As of 8/15/21 flight time will be limited to Civil Twilight per Forest and Regional policy.</li> <li>~ Ensure All aviation operations are integrated and coordinated into incident aviation operations</li> <li>~ Build in contingencies to aircraft limitations. Extended medivac times etc.</li> <li>~ Ensure positive communication with all air resources.</li> </ul>
Incident	Chain Saw Operations	<ul style="list-style-type: none"> <li>~ Follow "Hazard Tree Safety" guidelines, IRPG Pg 22</li> <li>~ Follow "Procedural Felling Operations" IRPG Pg 85.</li> <li>~ Look up, Look down, Look around for hazard tree indicators.</li> <li>~ Only fell and buck trees within your expertise, and training.</li> <li>~ Do not fall trees during high wind events.</li> <li>~ Ensure proper use of all required PPE.</li> </ul>
Fireline	Steep Terrain & Rolling Debris	<ul style="list-style-type: none"> <li>~ Maintain 8'-10' spacing when working &amp; walking.</li> <li>~ Avoid working above personnel when rolling material may impact those below.</li> <li>~ Be on the lookout for rolling rocks, debris, or burning material.</li> <li>~ Evaluate necessity to send personnel in areas with limited access.</li> <li>~ Post lookouts IRPG Pg 7</li> </ul>
Fireline	Hazard Trees	<ul style="list-style-type: none"> <li>~ Through daily briefings remind resources about established "Hazard Tree Safety" guidelines.</li> <li>~ Inform resources on shallow rooted trees in fire area. Weakened root systems from drought and fire strain are more receptive to wind fall.</li> <li>~ Establish trigger points for disengagement during high wind events.</li> <li>~ Limit firefighter exposure in areas with potential weakened trees.</li> <li>~ Utilize heavy equipment to remove / reduce hazard tree exposure.</li> </ul>
Incident	Fatigue & Over Exertion	<ul style="list-style-type: none"> <li>~ Drink 1 quart of water each hour during and after work.</li> <li>~ Set a reasonable work pace and allow adequate rest breaks while on the project.</li> <li>~ Stagger work crews start time to limit fatigue.</li> <li>~ Use buddy system to monitor personnel of heat related and fatigue issues.</li> <li>~ Follow work / rest guidelines.</li> </ul>
Incident	Driving & Traffic	<ul style="list-style-type: none"> <li>~ Schedule shifts that promote travel during daylight hours to reduce driver fatigue and provide for increased reaction time.</li> <li>~ Prepare drivers for fog/smokey/wet road conditions, wildlife and other unexpected hazards.</li> <li>~ Establish incident tempo that reduces urgent operations and operational rush. Promote "Slow and Steady" pace.</li> <li>~ Ensure drivers are with familiar vehicle operations (rental vehicles).</li> </ul>
Fireline	Heavy Equipment Operations	<ul style="list-style-type: none"> <li>~ Provide daily safety briefings to remind about heavy equipment hazards. Always maintain working space.</li> <li>~ Establish traffic control along roadways. Ensure communications are established with operators.</li> <li>~ Identify and communicate hazards in the working area (traffic, power lines, culverts, etc)</li> <li>~ Maintain awareness of specific roadway hazards for heavy equipment.</li> </ul>
Incident	Personal Hygiene / Covid 19	<ul style="list-style-type: none"> <li>~ Adhere to local, agency and IMT policy and direction to prevent spread of virus. Educate incident personnel in policy and practices.</li> <li>~ Ensure self assessments, social distancing, face coverings and personal hygiene.</li> <li>~ Encourage anyone with potential symptoms notifies supervisor immediately.</li> <li>~ Don't share personal items such as water bottles communication devices and utensils.</li> <li>~ Wash hands before meals, and after use of rest room facilities. Follow with hand sanitizer.</li> </ul>

## INCIDENT SAFETY ANALYSIS 215a

Incident	Wildlife & Livestock	<ul style="list-style-type: none"> <li>~ Provide training on wildlife hazards to all fireline personnel (Moose / Bear/ Buffalo).</li> <li>~ Provide daily reminders of wildlife hazards to all personnel to maintain awareness.</li> <li>~ Ensure personnel are comfortable with use of bear spray (if available) and other deterrents</li> <li>~ Provide guards and other precautions as conditions warrant.</li> </ul>
Incident	Incident Camp	<ul style="list-style-type: none"> <li>~ Be aware of camp medical and evacuation plans</li> <li>~ Wear closed toe footwear with acceptable support. Be aware of potential for uneven footing and loose rocks.                             <ul style="list-style-type: none"> <li>~ Wear PPE as required for assigned</li> </ul> </li> <li>~ Loading and carrying: lift with legs, not back.</li> <li>~ Drive slowly. Max 5 MPH. Watch for pedestrian traffic.</li> <li>~ When Backing: Use a Spotter.</li> <li>~ DO NOT drive or park in sleeping areas.</li> <li>~ Personal Hygiene: Wear Masks, Distance, Wash hands after toilet use and prior to eating.</li> <li>~ Stay active, stretch and walk around often.</li> <li>~ Be Aware there may be Snakes, Insects and other live hazards in camp.</li> <li>~ Alcohol and / or Illegal drugs are prohibited in camp.</li> </ul>
Fireline	Indirect Fireline	<ul style="list-style-type: none"> <li>~ Post lookouts, identify escape routes and safety zones IRPG Pg. 7</li> <li>~ Review "Strategy Direct/Indirect Attack" IRPG Pg. 82-83</li> <li>~ Refer to "Line Location" IRPG Pg 84</li> </ul>
Incident	Bees, Ticks, Mosquitoes	<ul style="list-style-type: none"> <li>~ Identify personnel with known allergic reactions to stings.</li> <li>~ Provide repellants and nets to prevent stings</li> <li>~ Ensure crew members have medication / EPI pens if needed and others on crew are aware of storage location(s) and how to use.</li> <li>~ Establish inter-crew Incident within Incident process to expedite medical response to allergic fireline personnel.</li> </ul>
Incident	Firefighter & Public Smoke Exposure	<ul style="list-style-type: none"> <li>~ Refer to "Smoke Hazards and Mitigation" IRPG Pg 30</li> <li>~ Use warning lights and provide traffic control on roadways during smoky and night operations.</li> <li>~ Rotate crews out of smoky areas during firing and mop-up operations.</li> <li>~ Contact Communications when firing operations are initiated.</li> </ul>
Fireline	Structure Protection & HAZMAT	<ul style="list-style-type: none"> <li>~ Review "Wildland Urban Interface Firefighting" considerations, IRPG Pg 12-16</li> <li>~ Use "Structure Assessment" checklist, IRPG Pg 13</li> <li>~ Refer to "Structure Hazard Marking System" IRPG Pg 41</li> <li>~ Follow "HAZMAT Incident Operations" IRPG Pg 36</li> </ul>
Incident	Foot Travel	<ul style="list-style-type: none"> <li>~ Take short steps in potentially slick or slippery areas.</li> <li>~ Use caution on uneven surfaces. While traversing steep terrain on fireline move across slope when possible to travel up or down.</li> <li>~ Place your full attention on walking. Focusing on cell phone while walking is unsafe.</li> <li>~ If you do fall protect your head and back. Brace yourself if possible.</li> </ul>
Fireline	ATV/UTV use	<ul style="list-style-type: none"> <li>~ Ensure equipment is inspected and safe to use.</li> <li>~ Restrict UTV's to max width of 50" on ATV trails due to width and severe out sloped conditions.</li> <li>~ Ensure operator is trained and certified to operate.</li> <li>~ Ensure operator has proper PPE according to the Redbook and/or RMA.</li> <li>~ Question if it is mission critical.</li> </ul>

# COVID Mitigations and Screening Tool



## **Maintain Situational Awareness of The Fire Environment: 10 & 18, LCES**

- Monitor each other, watch for symptoms (Firefighter Health Screening Tool).
- Never share PPE, UTV & flight helmets, radios, or other equipment
- Implement daily decontamination procedures of apparatus and equipment
- Adjust operational periods to allow for additional COVID-19 logistics.
- Plan for overnight lodging/camping/feeding scenarios that maintain separation from other fire personnel and community

## **WILDLAND FIRE COVID-19 SCREENING TOOL**

Today or in the past 24 hours, have you had any of the following symptoms<sup>1</sup>?

Symptom
Cough more than expected?
Shortness of breath or difficulty breathing?
Fever? Chills?
Muscle pain, outside your normal for firefighting?
Sore throat?
New loss of taste or smell?
Fatigue, outside your normal for firefighting?
Headache, outside your normal for firefighting?
Congestion or runny nose, outside your normal for firefighting?
Nausea or vomiting
Diarrhea
<i>* Take temperature with no-touch thermometer, if available *</i>

**MEDICAL PLAN (ICS 206)**

<b>1. Incident Name:</b> West Lolo Complex	<b>2. Operational Period:</b> Date: 08-22-21 Time: 0630-2130
--	--

3. Medical Aid Stations:					
Name	LWD	Location	Contact Number/Frequency	Paramedics on Site?	
Jeff Cummings (EMTB/MEDL)	8/25	ICP	317-730-6653	<input type="checkbox"/> Yes	<input checked="" type="checkbox"/> No
Jeff Hatch (EMPF/MEDL)	9/2	ICP	602-300-2156	<input checked="" type="checkbox"/> Yes	<input type="checkbox"/> No
Sherri McDougal (AEMF/MEDL) (t)	8/25	ICP	715-783-0075	<input type="checkbox"/> Yes	<input checked="" type="checkbox"/> No
Joanah Meyer (EMTF)	8/31	IA	413-695-5224	<input type="checkbox"/> Yes	<input checked="" type="checkbox"/> No
Ambo 2 (BLS)	8/31	ICP	406-890-9967	<input type="checkbox"/> Yes	<input checked="" type="checkbox"/> No
REMS-1 EMS Team	8/26	J	503-803-8107	<input checked="" type="checkbox"/> Yes	<input type="checkbox"/> No
Ambo 1 (ALS)	8/29	J	503-515-8530	<input checked="" type="checkbox"/> Yes	<input type="checkbox"/> No
Ambo 3 (ALS)	8/31	N	541-844-9033	<input checked="" type="checkbox"/> Yes	<input type="checkbox"/> No
Carl Joyce (EMTF)	8/22	Repair	303-717-8249	<input type="checkbox"/> Yes	<input checked="" type="checkbox"/> No
Ambo 4 (ALS)	9/3	Repair	623-326-4635	<input checked="" type="checkbox"/> Yes	<input type="checkbox"/> No
UTV 1	9/3	E	570-241-7757	<input checked="" type="checkbox"/> Yes	<input type="checkbox"/> No
UTV 2	9/4	E	541-285-8890	<input checked="" type="checkbox"/> Yes	<input type="checkbox"/> No
Tracia Garcia (EMTF)	9/4	H	602-819-1334	<input type="checkbox"/> Yes	<input checked="" type="checkbox"/> No

**4. Transportation:** (indicate air or ground):

In-Area Ambulance Services				
Ground Ambulance Service	Location	Number/Frequency	EMS Level	
Plains Ambulance	Plains, MT	911 (office 406-826-3670)	<input checked="" type="checkbox"/> ALS	<input checked="" type="checkbox"/> BLS
Thompson Falls Ambulance	Thompson Falls, MT	911 or through the MIDC	<input type="checkbox"/> ALS	<input checked="" type="checkbox"/> BLS
Air Ambulance Service	Location	Number/Frequency	EMS Level	
Two Bears Air (45 min response time)	Flathead, MT	406-758-5610	<input checked="" type="checkbox"/> ALS	<input type="checkbox"/> BLS
Life Flight Network (32 min response time)	Missoula, MT	911 or through the MIDC	<input checked="" type="checkbox"/> ALS	<input type="checkbox"/> BLS

**5. Hospitals:**

Hospital Name	Address	Contact Number	Travel Time		Trauma Center	Burn Center	Helipad
			Air	Ground			
Clark Fork Valley	10 Kruger Rd, Plains MT 59859	406-826-4875	N/A	5 min	<input checked="" type="checkbox"/> Yes Level: 4	<input type="checkbox"/> Yes <input checked="" type="checkbox"/> No	<input checked="" type="checkbox"/> Yes <input type="checkbox"/> No
St. Patrick's Hospital	500 W Broadway, Missoula, MT 59859	406-543-7271	25 min	90 min	<input checked="" type="checkbox"/> Yes Level: 2	<input type="checkbox"/> Yes <input checked="" type="checkbox"/> No	<input checked="" type="checkbox"/> Yes <input type="checkbox"/> No
Sacred Heart Hospital	101 W 5 <sup>th</sup> , Spokane, WA, 99204	509-474-3344	50 min	150 min	<input checked="" type="checkbox"/> Yes Level: 1	<input type="checkbox"/> Yes <input checked="" type="checkbox"/> No	<input checked="" type="checkbox"/> Yes <input type="checkbox"/> No
Harborview Medical Ct.	325 Ave., Seattle, WA 98104	206-744-3074	90 min	390 min	<input checked="" type="checkbox"/> Yes Level: 1	<input checked="" type="checkbox"/> Yes <input type="checkbox"/> No	<input checked="" type="checkbox"/> Yes <input type="checkbox"/> No

- 6. Special Medical Emergency Procedures:**
- Identify on scene IWI commander by name and position. Announce "Medical Emergency".
  - Patient or nearest responder notifies Group Supervisor who will respond to the scene and become the "incident within an incident" (IWI) commander.
  - Group Supervisor will notify nearest medical responder and ICP-Communications of the incident
  - **Use the "8 Line" report attached to the back of this IAP or page 118 of the IRPG.**
  - Urgent Care is for non-Life-threatening medical care.

**7. Prepared by (MEDL):** Sherri McDougal, MEDL(t) Signature: *Sherri McDougal* Jeff Cummings, MEDL Signature: *Jeff Cummings*

**8. Approved by (SOF2):** Paul Churchill Signature: */s/ Paul Churchill*

ICS 206	IAP Page ____	Date/Time: 8/21/21 @ 1600
---------	---------------	---------------------------

**Aviation Response Plan**

1. Evaluate patient for Code Green-Yellow-Red per Medical Incident Report 8 Line
2. Contact Two Bears Air for hoist capable mission
3. Move patient to extraction point for extraction
4. If necessary, ground-transport patient off fire-line to airport in Plains Mt for intercept with LifeFlight

**Helicopter Landing Zones**

Landing Zone:	Coordinates:	Landing Zone:	Coordinates:
H-5/DP16 Zulu	Lat 47°36.338' Long 155°18.675'		
Plains Airport	Lat 47°47.4742' Long 114° 90.859'		

INCIDENT RADIO COMMUNICATIONS PLAN			Incident Name WEST LOLO COMPLEX			Date/Time Prepared 8/21/21			Operational Period Date/Time 8/22/21 0600 - 8/23/21 0600		
Ch #	Function	Channel Name/Trunked Radio System Talkgroup	Assignment	RX Freq	N or W	RX Tone/NAC	TX Freq	N or W	Tx Tone/NAC	Mode A, D or M	Remarks
1	TACTICAL CHNL	TAC 1	W LOLO FIRE	168.0500		136.5	168.0500		136.5	A	HOTEL
2	TACTICAL CHNL	TAC 2	W LOLO FIRE	168.2000		136.5	168.2000		136.5	A	IA
3	TACTICAL CHNL	TAC 3	W LOLO FIRE	168.6000		136.5	168.6000		136.5	A	ECHO / NOVEMBER
4	TACTICAL CHNL	TAC 4	W LOLO FIRE	166.7250		136.5	166.7250		136.5	A	JULIET
5	TACTICAL CHNL	TAC 5	W LOLO FIRE	166.7750		136.5	166.7750		136.5	A	REPAIR GROUP
6	TACTICAL CHNL	TAC 6	W LOLO FIRE	168.2500		136.5	168.2500		136.5	A	CHARLIE / ZULU / PAPA
7	NIFC CMD RPT	CMD 4	W LOLO FIRE	170.0000		136.5	166.6750		136.5	A	EDDY PEAK / CMD 4
8	NIFC CMD RPT	CMD 11	W LOLO FIRE	170.6875		136.5	166.5750		136.5	A	PRISCILLA PEAK / CMD 11
9	NIFC CMD RPT	C 36	W LOLO FIRE	171.0625		136.5	163.8250		136.5	A	COUGAR PEAK / CMD 36
10	NIFC CMD RPT	C 41	W LOLO FIRE	171.8375		136.5	165.3875		136.5	A	RICHARDS PEAK / CMD 41
11	AIR/GND PRI	A/G PRI	W LOLO FIRE	167.9000			167.9000			A	AIR/GROUND PRIMARY
12	A/GND SEC	A/G SEC	W LOLO FIRE	168.2875			168.2875			A	AIR/GROUND SECONDARY
13	FS REPEATER	EDDY		172.3875		\$F7E	164.1750		\$526	D	LINKED TO MSO DISPATCH
14	RED	RED		154.0700			154.0700		156.7	A	MUTUAL AID
15	TAN	VMED 28		155.3400			155.3400		156.7	A	MED A/G PRI
16	AIR GUARD	AIR GUARD		168.6250			168.6250		110.9	A	AIR GUARD
Prepared by (Communications Unit) W LOLO COMMS 720-428-0546 / COML-T HERRING 505-328-3896						Incident Location LOLO NF, CONTROLLED UNCLASSIFIED INFORMATION//BASIC County _____ State MT Latitude _____ N Longitude _____ W					

The convention calls for frequency lists to show four digits after the decimal place, followed by either an "N" or a "W", depending on whether the frequency is narrow or wide band. Mode refers to either "A" or "D" indicating analog or digital (e.g. Project 25) or "M" indicating mixed mode. All channels are shown as if programmed in a control station, mobile or portable radio. Repeater and base stations must be programmed with the Rx and Tx reversed.

# Logistics Schedule

## Food

- Coffee – (0500-0900)
- Breakfast – (0600-0900)
- Lunch – Sack available
- Dinner – (1800-2100)

## Shower Schedule

- 0500-1200 and 1400-2300

## Laundry Options *“The Wash Tub, 202 Willis Street, Plains, MT”*

- Coin Laundry service 0700 – 2000 (406-210-8873)



## Quiet Time Schedule

- 2100 – 0500 (8 hour work rest timeframe)

## Ordering Process

- 0600-1900 daily

\*\* If you are ordering Overhead, Equipment, Crews and Local Purchases make sure to submit through the Ordering Manager and if you have NFES Supply orders make sure you run those over to the supply unit to be filled or ordered.



# West Lolo Finance Procedure

Finance Email: [2021.westlolo.finance@firenet.gov](mailto:2021.westlolo.finance@firenet.gov)

## Directions for emailing Documents:

<p><b>Contract Resources</b>                  Send To: <a href="mailto:2021.westlolo.finance@firenet.gov">2021.westlolo.finance@firenet.gov</a>                  SUBJECT: Include Key Word: <b>Equipment</b></p>	<p><b>Overhead, Crews, and Cooperator Resources</b>                  Send To:  <a href="mailto:2021.westlolo.finance@firenet.gov">2021.westlolo.finance@firenet.gov</a>                  SUBJECT: Include Key Word: <b>Time</b></p>
--	---

## DOCUMENTS TO EMAIL TO FINANCE

	<p><b>Overhead, Crews, and Cooperator Resources</b></p>	<p>Regular Government Personnel &amp; ADs / Cooperator attachments: <b>Check-In:</b> Crew Manifests, MOUs, or Cooperative Agreement (if applies), AD Single Hire Sheet/RO  <b>Daily:</b> Crew Time Report (CTR), Shift Ticket (<i>when applies</i>), receipts(fuel issues, TV receipts, etc.)  <b>@Demob:</b> Signed OF288, Final Equipment Use Invoice (Cooperator), Demob Sheet</p>
	<p><b>Contract Resources</b></p>	<p>Private: Contractor Attachments:  <b>@Check-In:</b> Resource Oder, Full Contract/Agreement, Certifications (<i>if required</i>), Pre-Inspection  <b>Daily:</b> <u>SHIFT Tickets</u>, receipts (fuel issues, claims, etc.)  <b>@Demob:</b> Contractor Evaluations, Final Shift Tickets and receipt for Addition/Deductions, Post-Inspection, Final Signed Invoices, DemobCheckout Sheet (<i>ICS 221</i>)</p>

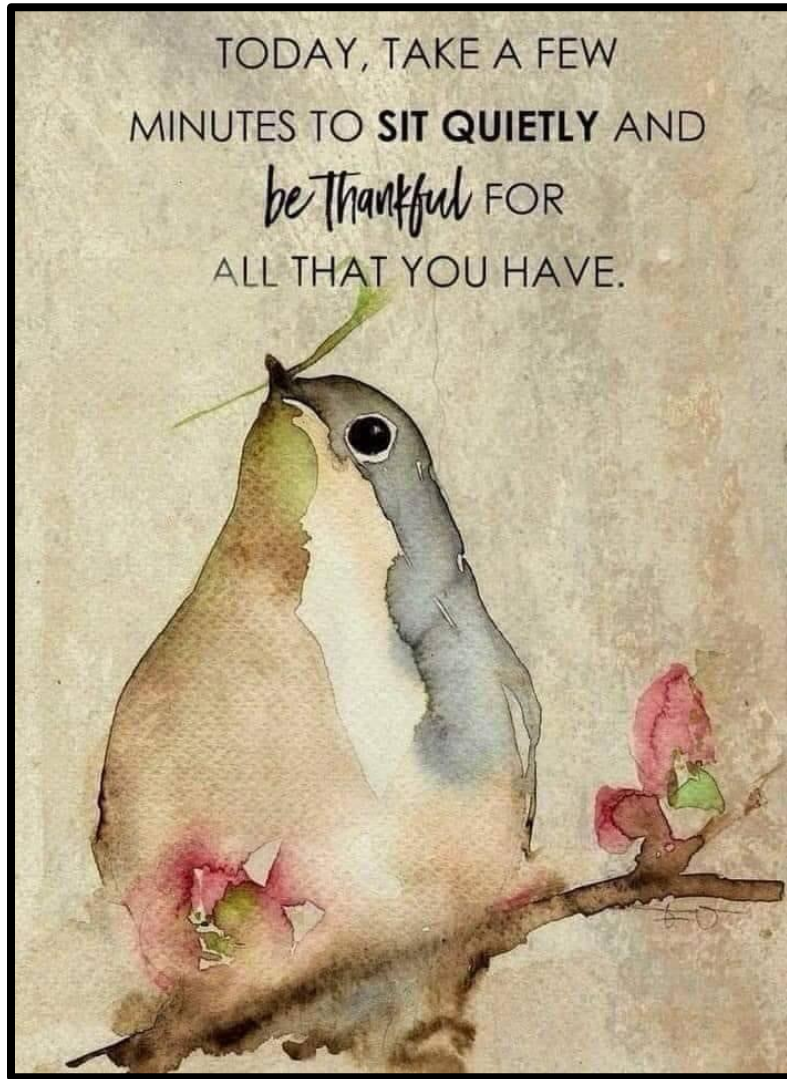
## FINANCE DEMOB PROCEDURES

All Resource will be sent their **DRAFT OF-288/OF-286's** via the Finance email. 12 hours will be provided to allow the resource to review their document and reply back to Finance with the statement "No Corrections Necessary" or a description of any issues. After Finance receives the email, any discrepancies will be resolved. Next, the resource is sent the **FINAL DOCUMENT** for signature. They will then email the signed document back to Finance, if able. If you are unable to sign, respond to that effect and we will digitally sign on your behalf. Finance will then sign the **FINAL DOCUMENT** and email it back to the resource. This completes the process.



# HUMAN RESOURCE MESSAGE

*There is zero tolerance for drugs or alcohol on this fire incident.*



*The more you are thankful, the more you attract things to be thankful for.*

\*\*\*\*\*

Debby Hassel, HRSP (979) 255-5513

[hrspfire@gmail.com](mailto:hrspfire@gmail.com)





# Training Message

Check In – If you have a position task book (PTB), scan the Master QR code to get to the training QR code. There you initiate the check in process with the Incident Training Specialist. Don't forget to email a copy of your qualification card and position task book cover to Robbie Hollingsworth at [2021.westlolo.plans@firenet.gov](mailto:2021.westlolo.plans@firenet.gov)

Trainee Demob - In order to receive credit for your assignment, you must close out with the Incident Training Specialist prior to departure.

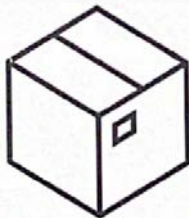
Close out requirements include:

1. Ensure your trainer(s)/evaluator(s) has/have initialed completed tasks in your PTB.
2. Obtain an Incident Performance Rating (please sign in the appropriate block at the bottom of the form)
3. Obtain an Evaluation record
4. If evaluator initialed #1 on your Evaluation Record, ensure he/she signs as final evaluator (located on the backside of your PTB cover page)
5. Close out with TNSP and email all documentation (including item #4, When appropriate) to [2021.westlolo.plans@firenet.gov](mailto:2021.westlolo.plans@firenet.gov)



## Southern Area Incident Management Gold Team Fire Information

*Need something shipped to firecamp? Use the following address only:*



Attention: West Lolo Complex Fire Camp  
[Your Name]  
83 Helterline Road  
Plains, Montana 59859

Lost and Found: Turn in lost items and claim items lost at the Information Officer tent!



Photos can be texted to Public Information Officer Brook Smith at: 865-603-5217

<https://inciweb.nwcg.gov/incident/7620>

OR [scan the QR code with your phone's camera!]



<https://www.facebook.com/WestLoloComplex/>

OR [scan the QR code with your phone's camera!]



# Steps in the Demob process

- **Note of your demob date listed in the IAP, inform your incident supervisor if that date is wrong, so they can contact demob to update.**
- If you have relief operators replacing timing out operators, use the QR code below or stop by Check in or Demob and we will adjust the demob date for that equipment.
- If you are overhead try to close out virtually by following the process on the Finance Page.
- Return all accountable property to the Supply Unit, and/or Communications.
- Have equipment inspected at Ground Support and go through Weed Wash.
- Submit CTRs/Shift Tickets and FINALIZE your OF-288/OF-286, read Finance Procedure page for more instructions.
- Scan the QR code below to provide travel info if Driving. **We need you to provide your ETD/ETA, and RON city, if taking more than one day to drive home.**

**Demob Contact:** Jeff DeMatteis, 720-441-8211

Email: [2021.westlolo.demob@firenet.gov](mailto:2021.westlolo.demob@firenet.gov)

QR Code for Air Travel



QR Code for Driving



QR Code for Operator Swaps



# DEMOB LIST for August 22, 2021

The following resources are Scheduled for Demob Today, You may close out virtually by following the Finance Procedures described on the Finance Page, otherwise closeout inperson at the time listed.

DATE	DEMOB TIME	REQ.#	ITEM CODE	RESOURCE NAME	UNIT ID
08/22/2021	07:30	O-337	COMT	BEMELEN, MARK ANTHONY	CO-DENX
08/22/2021	07:30	E-174	ENG3	HART VENTURES, INC.	MT-R01
08/22/2021	07:30	E-143	ENG6	J3 CONTRACTING, LLC	NM-R03
08/22/2021	07:30	E-176	ENG6	GLOBAL FRONT LINE	NM-R03
08/22/2021	08:00	O-405	CRWB	MUNK, ZAKARY TY	ID-PAF
08/22/2021	08:00	E-203	ENG6	METAL WORKS OF MONTANA, INC.	MT-R01
08/22/2021	08:00	E-204.1	FFT1	DOCKTER, JERRY	MT-SWS
08/22/2021	08:00	E-204.2	ENGB	KITTRIDGE, KAT	MT-SWS
08/22/2021	08:00	C-60	HC2I	LONE STAR STATE #1	TX-TXS
08/22/2021	08:30	E-130	ENG6	CAHOON, FRANCIS C	MT-R01
08/22/2021	08:30	E-219	ENG6	FIREBRAND FORESTRY LLC	MT-R01
08/22/2021	09:00	E-141	ENG6	ROBERT DILLON TREE SERVICE LLC -	MT-R01
08/22/2021	09:00	E-148	WTS3	MISSION MOUNTAIN STAR	MT-R01
08/22/2021	09:00	E-153	WTS2	WILDFIRE RESOURCES , JAMES HIEB	MT-R01
08/22/2021	09:30	E-156	ENG6	GYP SUM FPD	CO-CDFS
08/22/2021	09:30	E-156.1	ENGB	TROW, DAMIAN SEAN	CO-GYPX
08/22/2021	09:30	E-156.2	FFT1	ANSON, ERIC U	CO-GYPX
08/22/2021	09:30	E-156.3	FFT1	BLACK, BILL P	CO-GYPX
08/22/2021	09:30	O-399	CRWB	YOUNG, CHRISTOPHER CURTIS	MT-CGF
08/22/2021	09:30	O-401	CRWB	MCGLONE, DANIEL P	MT-CGF
08/22/2021	09:30	O-404	CRWB	VESCE, BRYAN MATHEW	MT-CGF
08/22/2021	09:30	O-406	FFT1	FLICK, JUSTICE JERRY WILLIAM	SD-BKF
08/22/2021	09:30	O-407	FFT1	CHARLESWORTH, WIATT	UT-UWF
08/22/2021	09:30	O-431	FFT1	DIAMOND, COLE J	UT-UWF
08/22/2021	09:30	O-468	FFT1	STEVENS, SETH THOMAS	SD-BKF
08/22/2021	10:00	O-442	HECM	HELFRICH, TRAVIS	AZ-KNF
08/22/2021	10:00	O-440	EMTF	RESCUE 286 JOYCE, CARL WESLEY	CO-HRTY
08/22/2021	10:00	O-440.1	EMTF	CARL WESTON, JOYCE	CO-HRTY
08/22/2021	10:00	O-465	TFLD	JOHNSON, THEODEN	MT-LNF
08/22/2021	10:00	E-214	AMBU	FIRE LINE MEDICS	MT-LNF
08/22/2021	10:00	O-508	SOF2	HOGGE, BARRY	OR-WIF
08/22/2021	10:30	E-217	MAST	JG ENTERPRISE,	ID-FCF
08/22/2021	10:30	E-216	MAST	AUKER BUILDERS,	ID-FCF

# West Lolo Complex Documentation Process

1. Name files in accordance with the standardized NWCG naming conventions:  
{DocType}\_{Version}\_{Date}\_{IncidentNumber}

EXAMPLE: UNIT DAILY LOGS – ICS 214

214\_HowellJocelyn\_20210814\_000893

2. File your docs in the "eDoc Box". Pick 1 of the following methods:

A. Drop them daily into the 'eDoc Box' in the General Channel under 'INBOX for Documentation'.

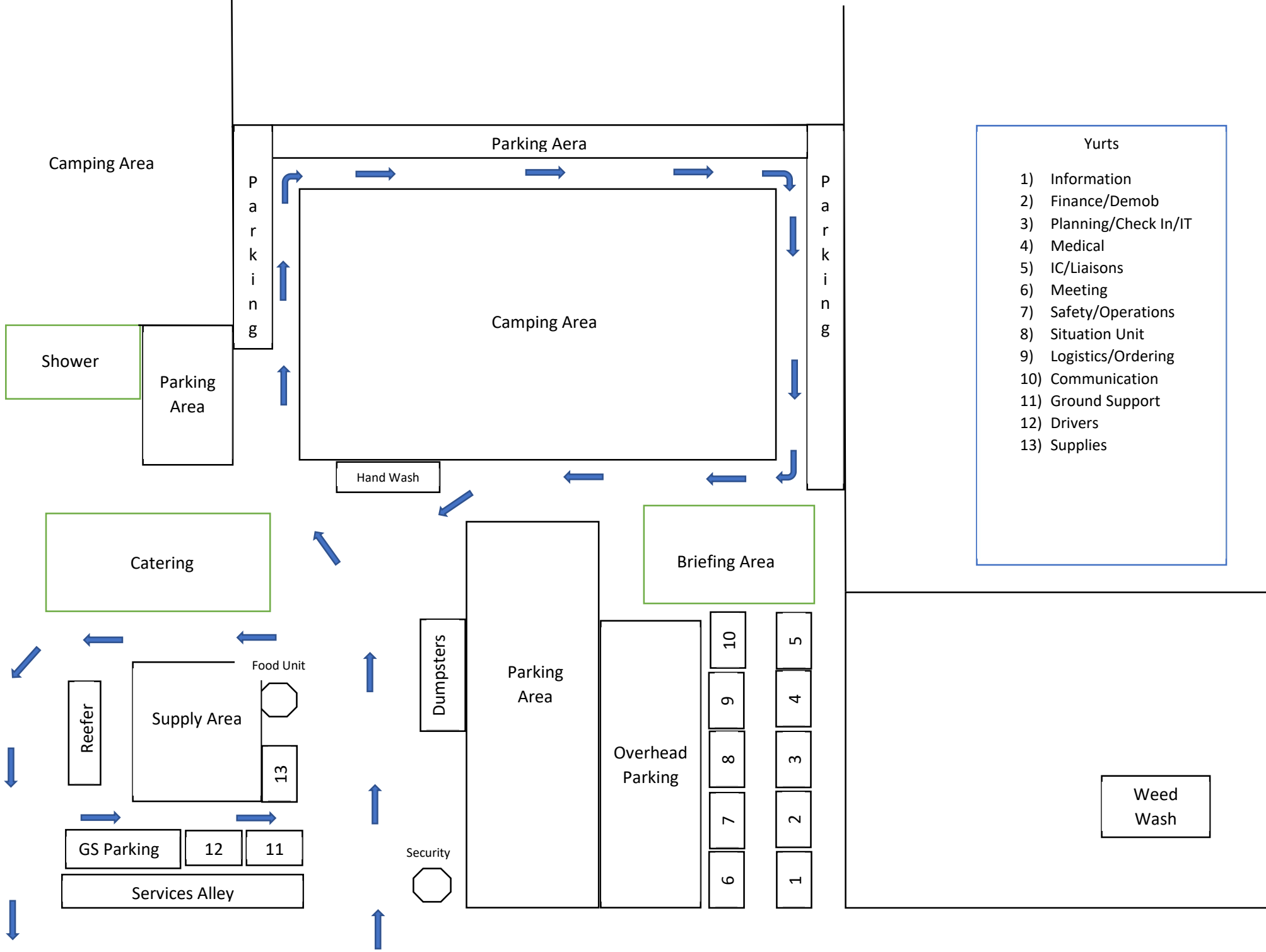
B. Email them daily to [jocelyn\\_howell@firenet.gov](mailto:jocelyn_howell@firenet.gov)

All documentation will be filed electronically in TEAMS for the West Lolo Complex. There are no paper copies or paper doc boxes. If you need to scan files, there is one available in the Plans room at ICP. If you have questions about what to file or how, please reach out!

Questions about the process? Need help?

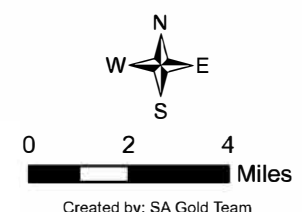
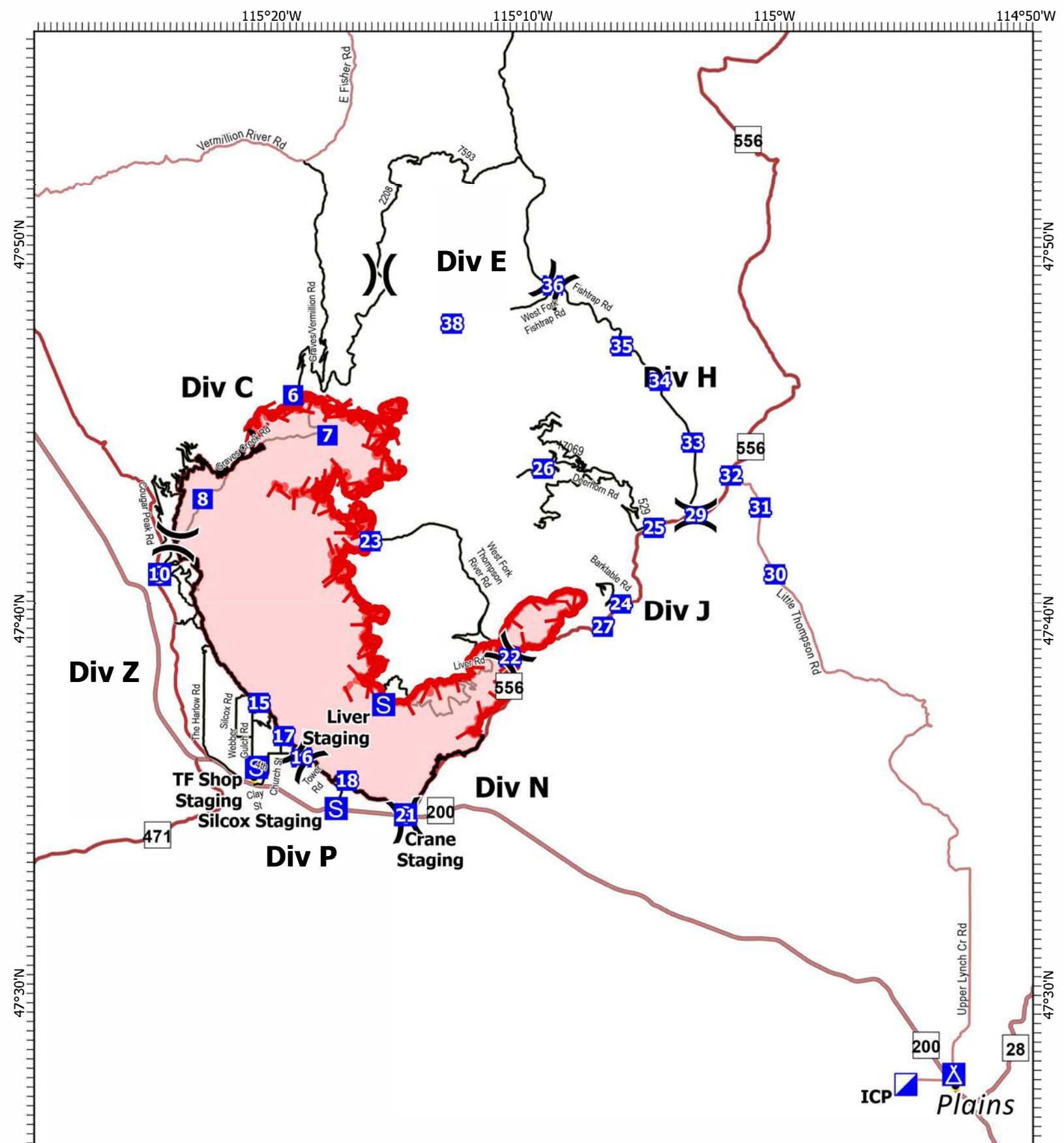
Jocelyn Howell- DOCL(t)

[jocelyn\\_howell@firenet.gov](mailto:jocelyn_howell@firenet.gov) or 214-934-0138



- Yurts**
- 1) Information
  - 2) Finance/Demob
  - 3) Planning/Check In/IT
  - 4) Medical
  - 5) IC/Liaisons
  - 6) Meeting
  - 7) Safety/Operations
  - 8) Situation Unit
  - 9) Logistics/Ordering
  - 10) Communication
  - 11) Ground Support
  - 12) Drivers
  - 13) Supplies

Weed Wash



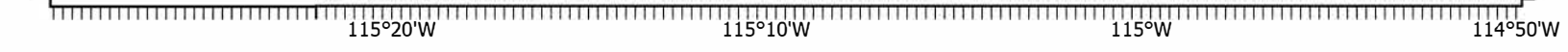
### IAP Map

West Lolo Complex  
 MT-LNF-000893  
 8/21/2021 Day

- ▭ Wildfire Daily Fire Perimeter
- ▬ Fire Edge
- Contained Line

38688 acres at 8/17/21 @ 1600

8/20/2021 1530  
 North American 1983 Datum. Lat/Long Grid



Gold Team Phone List

COMMAND			Chief	Thomas Barrett - v	478-550-6372
Incident Commander	Debbie Beard	850-524-9966	Chief (t)	Kelly Russell	850-294-8400
Deputy Incident Commander	Marty Bentley	423-584-1682	Resource Unit Leader	Aerin Land	305-432-6695
Liaison Officer	Michael Wright	970-819-2890	Resource Unit Leader (t)	Jocelyn Howell	214-934-0138
Liaison Officer (t)	Robert Claybrook	859-490-0653	Status Check-In Recorder (t)	Paula Hensley	606-275-2140
Liaison Officer (t)	Jeffrey Gardner	706-260-6296	Status Check-In Recorder (t)	Kenneth Parker	770-468-5459
Covid Coordinator (t)	Bradley Cooper	318-451-5074	Situation Unit Leader	Terry Bowerman	423-552-3323
Public Information Officer	Michelle Burnett	803-920-6167	Situation Unit Leader (t)	Laila Lienesch	541-760-1484
Public Information Officer	Andrew Gray - v	850-797-4824	Incident Technology Supt Splst	Kevin Curry - v	732-684-2999
Public Information Officer (t)	Cathryn Dowd -v	828-412-1521	Incident Technology Supt Splst (t)	Joshua Skidmore	662-891-3533
Public Information Officer (t)	Emily Cleaver -v	931-436-0080	GIS Specialist	Ethan Robertson	912-512-3496
Public Information Officer (t)	Brook Smith	865-603-5217	GIS Specialist (t)	Clayton Cooley	601-270-8562
Public Information Officer (t)	Tricia Boles	606-627-5398	Fire Behavior Analyst	Kelly Cagle	336-302-0343
Public Information Officer (t)	Ray Butler	865-250-8980	Demobilization Unit Leader	Jeff DeMatteis	720-441-8211
Public Information Officer (t)	Kari Hines	512-375-0354	Training Specialist	Robbie Hollingsworth -v	601-300-1396
Public Information Officer (t)	Ginelle Heller	404-782-9894	<b>LOGISTICS</b>		
Safety Officer	Paul Churchill	843-259-9884	Chief	Cameron Crisp	304-635-2035
Safety Officer	Richard Kelley	850-447-1344	Chief	Thomas Philipps	936-404-8451
Safety Officer	Shawn Dugger	850-508-7736	Chief (t)	Carl Bauer	719-431-2905
Safety Officer (t)	Jeffery Henderson	479-518-3162	Chief (t)	Mark Eaton	850-570-9091
Safety Officer (t)	Steve Gray	770-655-8002	Supply Unit Leader	Lemuel Cooksey	850-508-9097
<b>OPERATIONS</b>			Communications Unit Leader	George Rosenthal	936-707-1832
Chief	Jeffrey Schardt	706 280-5498	Communications Unit Leader (t)	Shannon Herring	470-201-9582
Chief	Shawn Nagle	662-231-4024	Ordering Manager	Sherri Kite	850-209-2150
Chief	Loy Elam	336-467-7254	Ordering Manager	Leigh Ostin	352-445-1366
Chief Field	Josh Graham	501-545-3088	Ground Support Unit Leader	Todd Waller	501-337-6308
Chief	C Bertram Plante	252-475-4662	Ground Support Unit Leader	Willard Stanley	850-635-1035
Chief (t)	Kevin Grodi	321-408-2728	Equipment Manager	Lanton Chumley	936-635-3720
Chief (t) Field	Matthew Johnson	870-415-0185	Equipment Manager (t)	Brian Truss	936-5464338
DIVS	Greg Salansky	865-414-6461	Medical Unit Leader	Jeff Cummings	317-730-6653
DIVS	Jason Klawinsky	936-520-8827	Medical Unit Leader	Jeff Hatch	435-414-3521
DIVS	Heath Thomas	479-667-2191	Medical Unit Leader (t)	Sherri McDougal	715-783-0075
DIVS	Jeff Muenster	406-291-8539	Facilities Unit Leader (t)	John Dunlap	850-545-8573
DIVS	Jared Nobles	352-625-2520	Receiving/Distribution Manager	Vince Mullins	850-694-8680
DIVS	Daniel Gore	478-456-8516	Receiving/Distribution Manager (t)	Randall Hamilton	606-864-4163
DIVS (t)	Matthew Moe	928-220-0043	Security Manager	Joshua Hindman	509-366-8975
DIVS (t)	Brenton Holt	870-715-0402	<b>FINANCE</b>		
DIVS (t)	Matt Hundt	775-340-2991	Chief	Jason Gillis	912-314-9233
<b>AIR OPERATIONS</b>			Chief (t)	Laura Wilson	765-427-7564
Air Operations Branch Dir	Larry Trapp	307-320-6566	Cost Unit Leader	Tom Steele	770-363-3583
<b>PLANNING</b>			Cost Unit Leader (t)	Stacey Eaton	850-375-9464
Chief	Jessica Hollingsworth	601-966-0331	Comps/Claims	Terri McDonald -v	352-454-5385
Chief	Carol O'Bryan	903-263-8704	Time	Donna Bentley	706-474-3216





# MEDICAL PLAN (ICS 206 WF)

Controlled Unclassified Information//Basic

## Medical Incident Report

**FOR A NON-EMERGENCY INCIDENT, WORK THROUGH CHAIN OF COMMAND TO REPORT AND TRANSPORT INJURED PERSONNEL AS NECESSARY.**

**FOR A MEDICAL EMERGENCY: IDENTIFY ON SCENE INCIDENT COMMANDER BY NAME AND POSITION AND ANNOUNCE "MEDICAL EMERGENCY" TO INITIATE RESPONSE FROM IMT COMMUNICATIONS/DISPATCH.**

Use the following items to communicate situation to communications/dispatch.

1. CONTACT COMMUNICATIONS / DISPATCH (**Verify correct frequency prior to starting report**)

*Ex: "Communications, Div. Alpha. Stand-by for Emergency Traffic."*

2. INCIDENT STATUS: *Provide incident summary (including number of patients) and command structure.*

*Ex: "Communications, I have a Red priority patient, unconscious, struck by a falling tree. Requesting air ambulance to Forest Road 1 at (Lat./Long.) This will be the Trout Meadow Medical, IC is TFLD Jones. EMT Smith is providing medical care."*

Severity of Emergency / Transport Priority	<input type="checkbox"/> RED / PRIORITY 1 Life or limb threatening injury or illness. Evacuation need is IMMEDIATE <i>Ex: Unconscious, difficulty breathing, bleeding severely, 2° – 3° burns more than 4 palm sizes, heat stroke, disoriented.</i> <input type="checkbox"/> YELLOW / PRIORITY 2 Serious Injury or illness. Evacuation may be DELAYED if necessary. <i>Ex: Significant trauma, unable to walk, 2° – 3° burns not more than 1-3 palm sizes.</i> <input type="checkbox"/> GREEN / PRIORITY 3 Minor Injury or illness. Non-Emergency transport <i>Ex: Sprains, strains, minor heat-related illness.</i>	
Nature of Injury or Illness & Mechanism of Injury		<i>Brief Summary of Injury or Illness (Ex: Unconscious, Struck by Falling Tree)</i>
Transport Request		<i>Air Ambulance / Short Haul/Hoist Ground Ambulance / Other</i>
Patient Location		<i>Descriptive Location &amp; Lat. / Long. (WGS84)</i>
Incident Name		<i>Geographic Name + "Medical" (Ex: Trout Meadow Medical)</i>
On-Scene Incident Commander		<i>Name of on-scene IC of Incident within an Incident (Ex: TFLD Jones)</i>
Patient Care		<i>Name of Care Provider (Ex: EMT Smith)</i>

3. INITIAL PATIENT ASSESSMENT: *Complete this section for each patient as applicable (start with the most severe patient)*

Patient Assessment: See IRPG page 106

Treatment:

4. TRANSPORT PLAN:

Evacuation Location (if different): *(Descriptive Location (drop point, intersection, etc.) or Lat. / Long.)* Patient's ETA to Evacuation Location:

Helispot / Extraction Site Size and Hazards:

5. ADDITIONAL RESOURCES / EQUIPMENT NEEDS:

*Example: Paramedic/EMT, Crews, Immobilization Devices, AED, Oxygen, Trauma Bag, IV/Fluid(s), Splints, Rope rescue, Wheeled litter, HAZMAT, Extrication*

6. COMMUNICATIONS: Identify State Air/Ground EMS Frequencies and Hospital Contacts as applicable

Function	Channel Name/Number	Receive (RX)	Tone/NAC *	Transmit (TX)	Tone/NAC *
COMMAND					
AIR-TO-GRND					
TACTICAL					

7. CONTINGENCY: **Considerations:** *If primary options fail, what actions can be implemented in conjunction with primary evacuation method? Be thinking ahead.*

8. ADDITIONAL INFORMATION: *Updates/Changes, etc.*

**REMEMBER:** Confirm ETA's of resources ordered. Act according to your level of training. Be Alert. Keep Calm. Think Clearly. Act Decisively.