

Incident Action Plan



Operational Period
Tuesday 08/24/2021 0600 - 2100

West Lolo Complex
MT-LNF-000893
P1N5AN (0116)

2021.westlolo.finance@firenet.gov

Incident Information



INCIDENT OBJECTIVES	1. Incident Name West Lolo Complex	2. Date Prepared 8/23/2021	3. Time Prepared 1500
	4. Operational Period Tuesday August 24, 2021 0600 - Tuesday August 24, 2021 2100		
5. Leader's Intent			
<ul style="list-style-type: none"> Protect the identified values at risk utilizing full suppression strategies identified by Agency Administrators in alignment with their prioritization of specific values. Risk management tools will be used to evaluate tactics in order to provide for firefighter and public safety while implementing actions that have a high probability of success. The highest priority on this incident is to protect the safety of fire personnel and to protect human life followed by the protection of structures. Ensure LCES is known and understood by everyone, and contingencies and trigger points for disengagement are developed and followed. Maintain a positive and inclusive workplace where all employees are valued and treated with respect. 			
6. Incident Objectives			
<ul style="list-style-type: none"> Address the safety of firefighters, aviation and public through clear communication. Ensure an understanding of strategies and tactics, including a clearly defined and obtainable end state, in order to facilitate sound risk mitigation decision making. Natural and Cultural Resource Values at Risk: Weigh potential suppression actions in consideration of heritage resources, waterways and riparian areas, and bull trout and anadromous fish habitat in order to minimize fire effects and undesirable suppression related effects to these values. Continue to develop and implement the long-term plan for fires in the complex that incorporate management actions in alignment with the protection of identified values, based on current and expected weather and fire behavior. The long-term plan will incorporate primary, alternate, contingency, and emergency plans identifying opportunities for both direct and indirect suppression actions. Maintain and strengthen relationships with the Lolo and Kootenai National Forests; MT DNRC; Sanders County Sheriff, Emergency Managers, and VFD's; community leaders; cooperators; local government and agencies; and private landowners utilizing the most effective platforms available. Provide timely, accurate, and consistent incident information through the press, community meetings, trap lines, briefings and social media. Incident information shall be coordinated between the team and Forest Service Line Officers, MT DNRC Unit Manager, and the Sanders, Missoula, and Clearwater Sheriff Offices. Continue to monitor costs and implement cost effective methods for accomplishing operational objectives. Ensure adherence to current guidance regarding COVID-19 to provide for the health and safety of all incident personnel by implementing the module-of-one concept, social distancing, and masking up as appropriate. 			
7. Attachments (X – if attached)			
<input checked="" type="checkbox"/> Organization List - ICS 203	<input checked="" type="checkbox"/> Medical Plan - ICS 206	<input type="checkbox"/>	_____
<input checked="" type="checkbox"/> Division Assignment Lists - ICS 204	<input checked="" type="checkbox"/> Unit Log 214	<input type="checkbox"/>	_____
	<input checked="" type="checkbox"/> WF206 8 Line	<input type="checkbox"/>	_____
8. Prepared By (Planning Section Chief)		9. Approved By (Incident Commander)	
Kelly Russell, PSC2 (t) <i>Kelly Russell</i>		Debbie Beard, IC <i>Debbie Beard</i>	
ICS 202		NFES 1326	

ORGANIZATION ASSIGNMENT LIST (ICS 203)

1. Incident Name:		2. Operational Period:	
WEST LOLO COMPLEX		Date/Time From: 08/24/2021 0600 TUE	Date/Time To: 08/24/2021 2100 TUE
3. Incident Commander(s) and Command Staff:		RCDM	
IC/UC	DEBORAH BEARD, MARTY BENTLEY	VINCE MULLINS, R. HAMILTON (T)	
INFORMATION OFFICER	MICHELLE BURNETT, A. GRAY -V, R. BIBLE, C. DOWD (T) -V, E. CLEAVER (T) -V, B. SMITH (T), T. BOLES (T), R. BUTLER(T), K. HINES (T), G. HELLER (T),	FACILITIES UNIT	STEVE WEHERLEY, JOHN DUNLAP (T)
LIAISON OFFICER	MICHAEL WRIGHT, JEFFREY GARDNER (T), BRADLEY COOPER (T)	BASE CAMP MANAGER	CARTY CARSON
SAFETY OFFICER	PAUL CHURCHILL, B. KELLEY, S. DUGGAR, L. HOLSOMBACK, B. HOGGE, J. HENDERSON (T), S. GRAY (T)	GROUND SUPPORT UNIT	TODD WALLER, WILLARD STANLEY
COVID COORDINATOR	ROBERT CLAYBROOK (T)	EQUIPMENT MANAGER	LANTON CHUMLEY, KEELY BENSON(T),BRIAN TRUSS (T)
4. Agency/Organization Representative(s):		FOOD UNIT	TOM PHILIPPS, CARL BAUER (T)
Agency/Organization	Name	COMMUNICATIONS UNIT	GEORGE ROSENTHAL, SHANNON HERRING (T)
LNF AA	CAROLYN UPTON	MEDICAL UNIT	JEFF CUMMINGS, JEFF HATCH, SHERRI MCDUGAL (T)
WEST LOLO AREP	DAVE WROBLESKI, MIKE FEIGER	7. Operations Section:	
LNF COVID SUPPORT	AMY CARMICHAEL	OPS CHIEF	JEFFREY SCHARDT
READ	ANN HADLOW, M. MUELLER, M. KALINA, K. RICHARDSON, E. VANDERBEEK	FIELD OPS	JOSH GRAHAM, BERT PLANTE (T)
IBA	DEBBY WESSELIUS, ERIN LALLY (T)	PLANNING OPS	SHAWN NAGLE, MATT JOHNSON (T)
5. Planning Section:		STRUCTURE PROTECTION	KEVIN GRODI (T)
CHIEF	JESSICA HOLLINGSWORTH, CAROL O'BRYAN, THOMAS BARRETT -V, KELLY RUSSELL (T)	DIVISION/GROUP	CHARLIE/ZULU/ PAPA
SITUATION UNIT	TERRY BOWERMAN, E. ROBERTSON (T), LAILA LIENESCH (T)		GREG SALANSKY
FIRE BEHAVIOR ANALYST	KELLY CAGLE	DIVISION/GROUP	ECHO
GIS SPECIALIST	CLAY COOLEY (T)		BRIAN ELAM
DEMOBILIZATION UNIT	JEFF DEMATTEIS	DIVISION/GROUP	HOTEL
RESOURCES UNIT	M. SELLERS, A. LAND, J. HOWELL (T)		BRIAN ELAM
STATUS CHECK-IN	KEN PARKER (T), PAULA HENSLEY (T)	DIVISION/GROUP	JULIET
ITSS	KEVIN CURRY -V, JOSH SKIDMORE (T)		HEATH THOMAS, MATT HUNDT (T)
HR SPECIALIST	DEBBY HASSEL	DIVISION/GROUP	NOVEMBER
TRAINING SPECIALIST	ROBBIE HOLLINGSWORTH -V		JASON KLAWINSKY, MATTHEW MOE (T)
INCIDENT METEOROLOGIST	MIKE OTTENWELLER	DIVISION/GROUP	REPAIR
6. Logistics Section:			DANNY GORE
CHIEF	CAMERON CRISP, T. PHILIPPS, M. EATON (T), C. BAUER (T)	DIVISION/GROUP	SECURITY
ORDERING MANAGER	LEIGH OSTIN	7b. Air Operations Branch:	
SUPPLY UNIT	LEMUEL COOKSEY	AOBD	LARRY TRAPP
9. Prepared By:		AIR SUPPORT SUPERVISOR	CHARLES BARCLAY (T)
Name:	AERIN LAND	AIR SUPPORT SUPERVISOR	ALBERT FARIA
Position/Title:	RESL	8. Finance/Administration Section:	
Signature:		CHIEF	JASON GILLIS, LAURA WILSON (T)
ICS 203	IAP Page	TIME UNIT	COLLEEN GADD -V, D. BENTLEY -V
Date/Time:	08/23/2021 0935	COMPENSATION UNIT	TERRI MCDONALD -V
		COST UNIT	TOM STEELE, STACEY EATON (T)
		EQ TIME	KELLEY REEVES-V



Fire Weather Forecast

FORECAST NO: 45
PREDICTION FOR: Tuesday Day Shift
SHIFT DATE: August 24, 2021
FORECAST ISSUED: 1800 August 23, 2021

NAME OF FIRE: West Lolo Complex
UNIT: MT-LNF / Srn. Area Gold Team
Phone Number: (616) 450-5002
Incident Meteorologist: Mike Ottenweller

WEATHER DISCUSSION: Another cold start to the morning will see mostly sunny skies by afternoon. This will allow for temperatures to warm a few more degrees than Monday and humidities to drop slightly during the afternoon. Weak high pressure will make for lighter winds that will be mostly terrain driven. Wednesday is on track to be the warmest and driest day of the week with temperatures pushing towards 80 and minimum RH dropping into the teens. Winds will be mostly light again on Wednesday.

WEATHER FORECAST FOR TODAY (TUESDAY):

SKY/WEATHER: Partly cloudy becoming sunny.

Max Temperature: 73-78 in valleys. 63 to 68 higher elevations.

Min RH: Lower elevations 19-24%. Ridges 29-36%.

WINDS:

-20 ft Level-WINDS

Lower Valleys/Lower Slopes: Variable/terrain driven winds 3-6 mph.

Upper Ridges: NW 5-10 mph early shift to E through the day.

-TRANSPORT WINDS: E 10 mph. **Mixing Height:** 10,000 ft.

Haines: 3 **LAL:** 1 **CWR:** 0

TONIGHT:

SKY/WEATHER: Mostly clear with haze returning.

Min Temperature: Lower elevations 41 to 46. Ridges 47 to 52.

Max RH: Lower elevations: 70-80%. Ridges: 45-55%.

WINDS:

-20 ft Level-

Valleys/Lower Slopes: Light/terrain driven 3-6 mph.

Upper Ridges: E 5-10 mph.

WEDNESDAY:

SKY/WEATHER: Hazy and becoming partly cloudy. Slight chance of showers in the afternoon.

Max Temperature: 75-80 in valleys. 67 to 72 higher elevations.

Min RH: Lower elevations 18-23%. Ridges 28-34%.

WINDS:

-20 ft Level-WINDS

Lower Valleys/Lower Slopes: Light becoming upslope/upvalley 4-8 mph.

Upper Ridges: SE 5-10 mph becoming W late in the afternoon.

-TRANSPORT WINDS: E 10 mph. **Mixing Height:** 12,000 ft.

Haines: 4 **LAL:** 1 **CWR:** 10%.

Outlook Thursday through Saturday: The end of the week will bring a slight down turn towards cooler weather with higher humidities. Winds will be predominantly out of the west, but nothing much more than 15 mph is anticipated. The next chance for wetting rains comes late Friday into Saturday.

FIRE BEHAVIOR FORECAST

FORECAST NUMBER: #39	TYPE OF FIRE: Wildland
FIRE NAME: West Lolo Complex	OPERATIONAL PERIOD: 8/24/2021 Day Shift
DATE ISSUED: 08/23/2021	TIME ISSUED: 2000
UNIT: Lolo National Forest	WRITTEN: <i>Kelly Cagle</i> - FBAN

FUEL ASSUMPTIONS: The major fuel type found on the West Lolo Complex is fuel model 10 (mixed conifer with heavy dead/down). There are also areas of TU 5 – which is timber with a shrub component underneath. Fuel arrangement may be a blend of these 2 conditions. There are areas of fuel model 2 (grass with timber overstory) in the lowest elevations.

WEATHER SUMMARY: Reference fire weather forecast for specifics: Another cold start to the morning will see mostly sunny skies by afternoon. This will allow for temperatures to warm a few more degrees from Monday and humidities to drop slightly during the afternoon. Winds will be mostly light again on Wednesday.

General Fire Behavior Forecast: Expect minimal fire behavior today in timber, as those fuels remain damp from recent precipitation and will not carry fire very well. Isolated smokes are possible around the fire area today – especially during the afternoon as things begin to dry out. Heavy fuels will likely continue to smolder. An isolated torching tree is possible. RH's today could allow grass fuels on a sunny slope to carry fire and could spread at moderate rates during the afternoon.

Critical fire behavior thresholds:

RH below 25% Winds greater than 10 1000 hr FM less than 12% Haines 5 or 6

Specific:

Division November – Expect minimal fire behavior. Most fuels remain damp and will not carry fire very well. Some heavies are still consuming and may produce light smoke. RH's today are low enough to allow grass fuels to carry fire on a sunny slope late in the day. A torching tree might be possible.

Division Echo/Hotel/Juliet– Expect minimal fire behavior. Timber fuels will be too damp to carry fire. Grass fuels on a sunny slope could carry fire late shift. Heavies will continue to produce isolated smokes. A torching tree might be possible.

Divisions **Charlie/Papa/Zulu** – Expect minimal fire behavior. Timber fuels remain damp. Grass fuels on a sunny slope might carry fire late shift. Heavies will continue to produce a minor amount of smoke. An isolated torching tree could be possible.

Initial Attack – Low potential for IA activity today. If IA occurs, expect minimal fire behavior in timber. Grass fuels could have moderate spread rates today in an open and sunny environment.

Fine fuel moisture today is -	7-8%	Rates of Spread in Timber- Creeping
Probability of Ignition today -	45%	Rates of Spread in Grass- 4-10 chains/hour
Max Spotting Distance Today-	300 feet	Flame Lengths- 2 to 4 feet as an average

AIR OPERATIONS : Light inversion that should break early in the day. Clear skies should prevail by mid morning.

FIRE BEHAVIOR SAFETY: Firefighting Order #1 – Keep informed on fire weather conditions and forecasts.

Division/Group Assignment List (ICS 204 WF)
Controlled Unclassified Information//Basic

1. Incident Name:			3.			
WEST LOLO COMPLEX			Branch:		Division/Group	
2. Operational Period:			THORNE		C/Z/P	
Date/Time From: 08/24/2021 0600 TUE	Date/Time To: 08/24/2021 2100 TUE					
4. Operations Personnel						
OPERATIONS CHIEF		JEFF SCHARDT		BRANCH DIRECTOR		
DIVISION/GROUP SUPERVISOR		GREG SALANSKY		AIR ATTACK SUPERVISOR		
5. Resources Assigned this Period						
Strike Team / Task Force / Resource Designator	LWD	Leader	Number Persons	Drop Off PT./Time	Pick Up PT./Time	
UNSTAFFED						
6. Control Operations/Work Assignments:						
<p><u>TASK:</u> Monitor fire activity and spread. Maintain coordination and public relations with private landowners in fire impacted area. Assess suppression repair. Backhaul trash and unneeded equipment .</p> <p><u>PURPOSE:</u> To have control features in place that have the highest probability of success for incident resources. Maintain positive relationships with private landowners and cooperators during suppression operations.</p> <p><u>END STATE:</u> The fire is contained at the established control features with minimal impacts to private property, natural resources and values at risk. Local relationships are strengthened through timely communications, cooperation and coordination.</p>						
7. Special Instructions:						
<p>Bert Plante (Day-Field Operations Section Chief Trainee) will be compiling and coordinating all Suppression Repair Plan taskings. Please contact Bert at 252-475-4662.</p> <ul style="list-style-type: none"> • SEE COMM PLAN 						
8. Division/Group Communication Summary						
Function	Channel	RX Frequency N/W	RX Tone/NAC	TX Frequency N/W	TX Tone/NAC	Mode
COMMAND						
TACTICAL						
AIR TO GROUND						
9. Prepared By (Resource Unit Leader)			Approved By (Planning Section Chief)		Date	Time
JOCELYN HOWELL RESL (T)			KELLY RUSSELL - PSC2(T)		08/23/2021	0935

Division/Group Assignment List (ICS 204 WF)
Controlled Unclassified Information//Basic

1. Incident Name:			3.			
WEST LOLO COMPLEX			Branch:		Division/Group	
2. Operational Period:			THORNE		E	
Date/Time From: 08/24/2021 0600 TUE	Date/Time To: 08/24/2021 2100 TUE					
4. Operations Personnel						
OPERATIONS CHIEF		JEFF SCHARDT		BRANCH DIRECTOR		
DIVISION/GROUP SUPERVISOR		BRIAN ELAM		AIR ATTACK SUPERVISOR		
5. Resources Assigned this Period						
Strike Team / Task Force / Resource Designator	LWD	Leader	Number Persons	Drop Off PT./Time	Pick Up PT./Time	
UNSTAFFED						
6. Control Operations/Work Assignments:						
<p>TASK: Monitor fire behavior and movement. Assess suppression repair needs.</p> <p>PURPOSE: Have continuous fuel break from Thompson River Road to Fishtrap to slow eastward progression of fire onto state and private lands. To establish indirect control features, with minimum impact to natural resources, that will be used to stop fire progression.</p> <p>END STATE: Fire spread is limited and does not impact state/private lands. Values at risk are not impacted by fire.</p>						
7. Special Instructions:						
<p>Bert Plante (Day-Field Operations Section Chief Trainee) will be compiling and coordinating all Suppression Repair Plan taskings. Please contact Bert at 252-475-4662.</p> <ul style="list-style-type: none"> • SEE COMM PLAN 						
8. Division/Group Communication Summary						
Function	Channel	RX Frequency N/W	RX Tone/NAC	TX Frequency N/W	TX Tone/NAC	Mode
COMMAND						
TACTICAL						
AIR TO GROUND						
9. Prepared By (Resource Unit Leader)			Approved By (Planning Section Chief)		Date	Time
JOCELYN HOWELL RESL (T)			KELLY RUSSELL - PSC2(T)		08/23/2021	0935

Division/Group Assignment List (ICS 204 WF)
Controlled Unclassified Information//Basic

1. Incident Name:			3.			
WEST LOLO COMPLEX			Branch:		Division/Group	
2. Operational Period:			THORNE		H	
Date/Time From: 08/24/2021 0600 TUE	Date/Time To: 08/24/2021 2100 TUE					
4. Operations Personnel						
OPERATIONS CHIEF		JEFF SCHARDT		BRANCH DIRECTOR		
DIVISION/GROUP SUPERVISOR		BRIAN ELAM		AIR ATTACK SUPERVISOR		
5. Resources Assigned this Period						
Strike Team / Task Force / Resource Designator	LWD	Leader	Number Persons	Drop Off PT./Time	Pick Up PT./Time	
UNSTAFFED						
6. Control Operations/Work Assignments:						
<p>TASK: Monitor fire behavior and movement. Assess suppression repair needs.</p> <p>PURPOSE: Have continuous fuel break from Thompson River Road to Fishtrap to slow eastward progression of fire onto state and private lands. To establish indirect control features, with minimum impact to natural resources, that will be used to stop fire progression.</p> <p>END STATE: Fire spread is limited and does not impact state/private lands. Values at risk are not impacted by fire.</p>						
7. Special Instructions:						
<p>Bert Plante (Day-Field Operations Section Chief Trainee) will be compiling and coordinating all Suppression Repair Plan taskings. Please contact Bert at 252-475-4662.</p> <p>.*SEE COMM PLAN</p>						
8. Division/Group Communication Summary						
Function	Channel	RX Frequency N/W	RX Tone/NAC	TX Frequency N/W	TX Tone/NAC	Mode
COMMAND						
TACTICAL						
AIR TO GROUND						
9. Prepared By (Resource Unit Leader)			Approved By (Planning Section Chief)		Date	Time
JOCELYN HOWELL RESL (T)			KELLY RUSSELL-PSC2(T)		08/23/2021	0935

Division/Group Assignment List (ICS 204 WF)
Controlled Unclassified Information//Basic

1. Incident Name:				3.		
WEST LOLO COMPLEX				Branch: THORNE	Division/Group J	
2. Operational Period:						
Date/Time From: 08/24/2021 0600 TUE		Date/Time To: 08/24/2021 2100 TUE				
4. Operations Personnel						
OPERATIONS CHIEF		JEFF SCHARDT		BRANCH DIRECTOR		
DIVISION/GROUP SUPERVISOR		HEATH THOMAS MATT HUNDT (T)		AIR ATTACK SUPERVISOR		
5. Resources Assigned this Period						
Strike Team / Task Force / Resource Designator		LWD	Leader	Number Persons	Drop Off PT./Time	Pick Up PT./Time
HC1 MT TAYLOR * IA		09/01	VERNON JACKSON	14	ICP/0600	ICP/2100
PTF MOD * IA			BRITNEY ALLESTAD	11	ICP/0600	ICP/2100
O-508 SOF2		08/25	BARRY HOGGE	1	ICP/0600	ICP/2100
O-63 REMS1		08/26	MATT FOX	4	ICP/0600	ICP/2100
E-34 AMBO#1 ALS		08/29	KARI TOMLINSON	2	ICP/0600	ICP/2100
EMPF UTV2		09/03	SMITH/AUGUSTIN	2	ICP/0600	ICP/2100
6. Control Operations/Work Assignments:						
<p>TASK: Continue to mop up slop over on mechanical line. Monitor fire behavior and movement. Assess any suppression repair needs..</p> <p>PURPOSE: Have continuous fuel break from Thompson River Road to Fishtrap to slow eastward progression of fire onto state and private lands. To establish indirect control features, with minimum impact to natural resources, that will be used to stop fire progression.</p> <p>END STATE: Fire spread is limited and does not impact state/private lands. Values at risk are not impacted by fire.</p>						
7. Special Instructions:						
<p>Bert Plante (Day-Field Operations Section Chief Trainee) will be compiling and coordinating all Suppression Repair Plan taskings. Please contact Bert at 252-475-4662.</p> <ul style="list-style-type: none"> • INDICATES IA RESOURCE • SEE COMM PLAN 						
8. Division/Group Communication Summary						
Function	Channel	RX Frequency N/W	RX Tone/NAC	TX Frequency N/W	TX Tone/NAC	Mode
COMMAND						
TACTICAL						
AIR TO GROUND						
9. Prepared By (Resource Unit Leader)			Approved By (Planning Section Chief)		Date	Time
JOCELYN HOWELL RESL (T)			KELLY RUSSELL - PSC2(T)		08/23/2021	0935

Division/Group Assignment List (ICS 204 WF)
Controlled Unclassified Information//Basic

1. Incident Name:			3.			
WEST LOLO COMPLEX			Branch:		Division/Group	
2. Operational Period:			THORNE		N	
Date/Time From: 08/24/2021 0600 TUE	Date/Time To: 08/24/2021 2100 TUE					
4. Operations Personnel						
OPERATIONS CHIEF		JEFF SCHARDT		BRANCH DIRECTOR		
DIVISION/GROUP SUPERVISOR		JASON KLAWINSKY MATT MOE (T)		AIR ATTACK SUPERVISOR		
5. Resources Assigned this Period						
Strike Team / Task Force / Resource Designator		LWD	Leader	Number Persons	Drop Off PT./Time	Pick Up PT./Time
TFLD (T)			CASEY CRAFT	1	ICP /0600	ICP/2100
TFLD		08/31	CODY JERMYN	1	ICP/0600	ICP/2100
E-9004 ENG6 MISSISSIPPI 643 *IA		09/02	JASON LEASER	3	ICP /0600	ICP/2100
E-227 ENG6 MT-KNF-E673 *IA		08/28	MURRAY	6	ICP/0600	ICP/2100
ENG6 AZ-COF E382 *IA				3	ICP/0600	ICP/2100
E-177 ENG6 GILA 621 *IA		08/28	DUSTIN ROGER	6	ICP/0600	ICP/2100
O-475 SOF2		09/27	LARRY HOLSOMBACK	1	ICP /0600	ICP/2100
E-214 AMBO #3 ALS		08/31	JENNEL SMITH	2	ICP/0600	ICP/2100
EMPF		09/03	WALLACE	1	ICP/0600	ICP/2100
EMTF		09/03	GARCIA	1	ICP/0600	ICP/2100
6. Control Operations/Work Assignments:						
<p><u>TASK:</u> Secure, cool and mop up fires edge at containment lines. Monitor fire behavior and movement. Back haul excess water handling equipment. Maintain coordination and public relations with private landowners and cooperators.</p> <p><u>PURPOSE:</u> To have control features in place that have the highest probability of success for incident resources. Maintain positive relationships with private landowners and cooperators during suppression operations.</p> <p><u>END STATE:</u> The fire is contained at the established control features with minimal impacts to private property, natural resources and values at risk. Local relationships are strengthened through timely communication, cooperation and coordination.</p>						
7. Special Instructions:						
<p>Bert Plante (Day-Field Operations Section Chief Trainee) will be compiling and coordinating all Suppression Repair Plan taskings. Please contact Bert at 252-475-4662.</p> <ul style="list-style-type: none"> • INDICATES IA RESOURCES • SEE COMM PLAN 						
8. Division/Group Communication Summary						
Function	Channel	RX Frequency N/W	RX Tone/NAC	TX Frequency N/W	TX Tone/NAC	Mode
COMMAND						
TACTICAL						
AIR TO GROUND						
9. Prepared By (Resource Unit Leader)			Approved By (Planning Section Chief)		Date	Time
JOCELYN HOWELL RESL (T)			KELLY RUSSELL - PSC2(T)		08/23/2021	0935

Division/Group Assignment List (ICS 204 WF)
Controlled Unclassified Information//Basic

1. Incident Name:			3.			
WEST LOLO COMPLEX			Branch:		Division/Group	
2. Operational Period:			THORNE		REPAIR GROUP	
Date/Time From: 08/24/2021 0600	TUE	Date/Time To: 08/24/2021 2100				
4. Operations Personnel						
OPERATIONS CHIEF				BRANCH DIRECTOR		
DIVISION/GROUP SUPERVISOR		DANNY GORE		AIR ATTACK SUPERVISOR		
5. Resources Assigned this Period						
Strike Team / Task Force / Resource Designator	LWD	Leader	Number Persons	Drop Off PT./Time	Pick Up PT./Time	
O-465 TFLD	08/25	THEO JOHNSON	1	ICP/0600	ICP/2100	
O-520 HEQB	09/01	DAN CASTILLO	1	ICP/0600	ICP/2100	
HEQB		DUSTIN WAGONER	1	ICP/0600	ICP/2100	
E-226 DZ3 SORLIE	09/02	RICK SORLIE	2	ICP/0600	ICP/2100	
E-55 DOZ3 TRAVERS DOZER	08/31	BEN TRAVER	1	ICP/0600	ICP/2100	
E-223 EXCA2 TAYLOR SERVICES	09/03	JEFF MILLER	2	ICP/0600	ICP/2100	
E-229 EXCA3 TRAVERS	09/06		2	ICP/0600	ICP/2100	
O-469.54 SOF2 (T)	08/25	JEFF HENDERSON	1	ICP/0600	ICP/2100	
O-490 EMTF	08/31	JONAH MEYER	1	ICP/0600	ICP/2100	
E-196 AMBO #4 ALS	09/03	KEVIN MCMAHON	2	ICP/0600	ICP/2100	
O-488 EMPF UTV1	09/02	BELCHER	1	ICP/0600	ICP/2100	
6. Control Operations/Work Assignments:						
Task:Conduct: Repair operations on Federal and State lands to the standards set forth in the Repair delegation and follow the guidance provided across private lands.						
Purpose: To repair damage caused by fire suppression activities during the response to the wildfire.						
End State: As far as possible, return the landscape, to the state it was in, prior to the wildfire occurrence.						
7. Special Instructions:						
Bert Plante (Day-Field Operations Section Chief Trainee) will be compiling and coordinating all Suppression Repair Plan taskings. Please contact Bert at 252-475-4662.						
<ul style="list-style-type: none"> • SEE COMM PLAN 						
8. Division/Group Communication Summary						
Function	Channel	RX Frequency N/W	RX Tone/NAC	TX Frequency N/W	TX Tone/NAC	Mode
COMMAND						
COMMAND						
COMMAND						
COMMAND						
TACTICAL						
AIR TO GROUND						
9. Prepared By (Resource Unit Leader)		Approved By (Planning Section Chief)		Date		Time
AERIN LAND - RESL		KELLY RUSSELL - PSC2(T)		08/23/2021		0935

Division/Group Assignment List (ICS 204 WF)
Controlled Unclassified Information//Basic

1. Incident Name:			3.			
WEST LOLO COMPLEX			Branch:		Division/Group	
2. Operational Period:			THORNE		SECURITY	
Date/Time From: 08/24/2021 0600 TUE	Date/Time To: 08/24/2021 2100 TUE					
4. Operations Personnel						
OPERATIONS CHIEF			BRANCH DIRECTOR			
DIVISION/GROUP SUPERVISOR JOSHUA HINDMAN			AIR ATTACK SUPERVISOR			
5. Resources Assigned this Period						
Strike Team / Task Force / Resource Designator	LWD	Leader	Number Persons	Drop Off PT./Time	Pick Up PT./Time	
O-472 SEC 1 DAY	09/06	JERALD FLOYD	1	ICP/0530	ICP/2200	
SEC1 - NIGHT	09/03	DARRIN SPEEGLE	1	ICP/0530	ICP/2200	
24-HOUR ROTATION						
O-367 NATIONAL GUARD		LT. WIDHALM	1			
O-367 NATIONAL GUARD NIGHT LEAD		SGT 1ST CLASS COFFMAN	1			
6. Control Operations/Work Assignments:						
<p>TASK: Staff stationary control points and conduct law enforcement patrol of operational areas.</p> <p>PURPOSE: To control ingress and egress points to operational area and provide federal law enforcement patrol of operational area to enforce closures and respond to law enforcement incidents.</p> <p>END STATE: Maintain public and firefighter safety and security of assets assigned to the fire.</p>						
7. Special Instructions:						
<ul style="list-style-type: none"> Graves Roadblock - Soft closure Weber Roadblock - Soft closure Silcox- Soft closure West Fork Staging Rd-Soft closure Airport - Staffed 1900 - 0700 Fishtrap & 556 Rd-Staffed 24HR with National Guard 556 Rd at ACM RD staff 24 HR with National Guard <p>For further information regarding road closures please contact the local Sheriff.</p>						
8. Division/Group Communication Summary						
Function	Channel	RX Frequency N/W	RX Tone/NAC	TX Frequency N/W	TX Tone/NAC	Mode
COMMAND						
TACTICAL						
LOGISTICS						
AIR TO GROUND						
9. Prepared By (Resource Unit Leader)		Approved By (Planning Section Chief)		Date	Time	
AERIN LAND - RESL		KELLY RUSSELL - PSC2(T)		08/23/2021	0935	

10. TASK/ MISSION/ ASSIGNMENT (Type/ function includes: Air Tactical, Retardant, Recon, Personnel Transport, Bucket Operations, SAR, etc.)					
TYPE/FUNCTION	PRIORITY	NAME OF PERSONNEL OR CARGO (If applicable) or instructions for tactical aircraft	MISSION START	FLY FROM	FLY TO
Buckets	1		As requested	Helibase	Fire
Recon/PSD/IR	2		As requested	Helibase	Fire
Slings	3		As requested	Helibase	Fire

Fires	Helibase, Dip Sites, Pick Up Sites, etc.
Thorne: N 47° 42.137' X W 115° 18.384'	Plains Helibase(S34): N 47° 28.51' X W 114° 53.96' Elevation: 2470'
	For a complete list see Ops Map:

Other Assigned Support Equipment

<p><u>REMINDER!!</u> A flight risk assessment (GAR) needs to be completed prior to daily missions</p> <p>Region 1 CWN Helicopter GAR</p>		Helibase Trailer Plains	E-81	
		Hotsy	S-27	
		Water Tender	E-122	
		LUA Plains	S-66	

Wind Restrictions

Flights above ground level	Flight Permitted in Winds Less than / Maximum Gust Spread		
	Type 1 Helicopters	Type 2 Helicopters	Type 3 Helicopters
More than 500' AGL	<50kts / Gusts: N/A	<50kts / Gusts: N/A	<50kts / Gusts: N/A
Less than 500' AGL	<40kts / Max Gust Spread: 15kts	<40 kts / Max Gust Spread: 15kts	<30kts / Max Gust Spread: 15kts



HEALTH AND SAFETY MESSAGE



INCIDENT: West Lolo Complex	DATE: Tuesday, August 24, 2021
Major Hazards & Risks: <i>Driving</i>	
<p><u>Heading Home</u></p> <p>Your assignment doesn't stop when you walk away from demob. Your final assignment is to arrive safely at home. The 2-to-1 work-rest policy applies.</p> <ul style="list-style-type: none">➤ Drive defensively. Human nature ensures we are less patient when driving home; don't let impatience cause unsafe behavior.➤ No driver will drive more than 10 hours within any duty-day.➤ Multiple drivers in a single vehicle may drive up to 16 hours limitation provided no driver exceeds the individual driving time of 10 hours.➤ Do not drive past 2200 hours. Do not eat and drive at the same time.➤ Don't use cell phones while driving, pull off the road or call during your stretch breaks.	

Thank you for your time and consideration

West Lolo Complex Safety Officers: Paul Churchill, Buddy Kelley, Shawn Duggar, Larry Holsomback, Barry Hogge, Steve Gray (T), and Jeff Henderson (T)

INCIDENT SAFETY ANALYSIS 215a

West Lolo Complex - Tuesday, August 24, 2021

8. Location	9. Hazard	6. Control or Abatement Action (Engineering, Administrative, PPE, Avoidance, Education, etc)
Incident	Air Operations	<ul style="list-style-type: none"> ~ Avoid transfer of risk from ground to aviation resources. ~ Utilize safe and effective strategy and tactics. Involve pilot in mission planning. Conduct thorough risk assessment prior to mission. ~As of 8/15/21 flight time will be limited to Civil Twilight per Forest and Regional policy. ~ Ensure All aviation operations are integrated and coordinated into incident aviation operations ~ Build in contingencies to aircraft limitations. Extended medivac times etc. ~ Ensure positive communication with all air resources.
Fireline	Hazard Trees	<ul style="list-style-type: none"> ~ Through daily briefings remind resources about established "Hazard Tree Safety" guidelines. ~ Inform resources on shallow rooted trees in fire area. Weakened root systems from drought and fire strain are more receptive to wind fall. ~ Establish trigger points for disengagement during high wind events. ~ Limit firefighter exposure in areas with potential weakened trees. ~ Utilize heavy equipment to remove / reduce hazard tree exposure.
Fireline	Steep Terrain & Rolling Debris	<ul style="list-style-type: none"> ~ Maintain 8'-10' spacing when working & walking. ~ Avoid working above personnel when rolling material may impact those below. ~ Be on the lookout for rolling rocks, debris, or burning material. ~ Evaluate necessity to send personnel in areas with limited access. ~ Post lookouts IRPG Pg 7
Incident	Chain Saw Operations	<ul style="list-style-type: none"> ~ Follow "Hazard Tree Safety" guidelines, IRPG Pg 22 ~ Follow "Procedural Felling Operations" IRPG Pg 85. ~ Look up, Look down, Look around for hazard tree indicators. ~ Only fell and buck trees within your expertise, and training. ~ Do not fall trees during high wind events. ~ Ensure proper use of all required PPE.
Incident	Driving & Traffic	<ul style="list-style-type: none"> ~ Schedule shifts that promote travel during daylight hours to reduce driver fatigue and provide for increased reaction time. ~ Prepare drivers for fog/smokey/wet road conditions, wildlife and other unexpected hazards. ~ Establish incident tempo that reduces urgent operations and operational rush. Promote "Slow and Steady" pace. ~ Ensure drivers are with familiar vehicle operations (rental vehicles).
Fireline	Heavy Equipment Operations	<ul style="list-style-type: none"> ~ Provide daily safety briefings to remind about heavy equipment hazards. Always maintain working space. ~ Establish traffic control along roadways. Ensure communications are established with operators. ~ Identify and communicate hazards in the working area (traffic, power lines, culverts, etc) ~ Maintain awareness of specific roadway hazards for heavy equipment.
Incident	Fatigue & Over Exertion	<ul style="list-style-type: none"> ~ Drink 1 quart of water each hour during and after work. ~ Rotate crews out of smoky areas. ~ Set a reasonable work pace and allow adequate rest breaks while on the project. ~ Stagger work crews start time to limit fatigue. ~ Use buddy system to monitor personnel of heat related and fatigue issues. ~ Follow work / rest guidelines.

INCIDENT SAFETY ANALYSIS 215a

Incident	Personal Hygiene / Covid 19	<ul style="list-style-type: none"> ~ Adhere to local, agency and IMT policy and direction to prevent spread of virus. Educate incident personnel in policy and practices. ~ Ensure self assessments, social distancing, face coverings and personal hygiene. ~ Encourage anyone with potential symptoms notifies supervisor immediately. ~ Don't share personal items such as water bottles communication devices and utensils. ~ Wash hands before meals, and after use of rest room facilities. Follow with hand sanitizer.
Incident	Incident Camp	<ul style="list-style-type: none"> ~ Be aware of camp medical and evacuation plans ~ Wear closed toe footwear with acceptable support. Be aware of potential for uneven footing and loose rocks. ~ Wear PPE as required for assigned ~ Loading and carrying: lift with legs, not back. ~ Drive slowly. Max 5 MPH. Watch for pedestrian traffic. ~ When Backing: Use a Spotter. ~ DO NOT drive or park in sleeping areas. ~ Personal Hygiene: Wear Masks, Distance, Wash hands after toilet use and prior to eating. ~ Stay active, stretch and walk around often. ~ Be Aware there may be Snakes, Insects and other live hazards in camp. ~ Alcohol and / or Illegal drugs are prohibited in camp.
Incident	Wildlife & Livestock	<ul style="list-style-type: none"> ~ Provide training on wildlife hazards to all fireline personnel (Moose / Bear/ Buffalo). ~ Provide daily reminders of wildlife hazards to all personnel to maintain awareness. ~ Ensure personnel are comfortable with use of bear spray (if available) and other deterrents ~ Provide guards and other precautions as conditions warrant.
Incident	Bees, Ticks, Mosquitoes	<ul style="list-style-type: none"> ~ Identify personnel with known allergic reactions to stings. ~ Provide repellants and nets to prevent stings ~ Ensure crew members have medication / EPI pens if needed and others on crew are aware of storage location(s) and how to use. ~ Establish inter-crew Incident within Incident process to expedite medical response to allergic fireline personnel.
Incident	Foot Travel	<ul style="list-style-type: none"> ~ Take short steps in potentially slick or slippery areas. ~ Use caution on uneven surfaces. While traversing steep terrain on fireline move across slope when possible to travel up or down. ~ Place your full attention on walking. Focusing on cell phone while walking is unsafe. ~ If you do fall protect your head and back. Brace yourself if possible.
Fireline	ATV/UTV use	<ul style="list-style-type: none"> ~ Ensure equipment is inspected and safe to use. ~ Restrict UTV's to max width of 50" on ATV trails due to width and severe out sloped conditions. ~ Ensure operator is trained and certified to operate. ~ Ensure operator has proper PPE according to the Redbook and/or RMA. ~ Question if it is mission critical.

COVID Mitigations and Screening Tool



Maintain Situational Awareness of The Fire Environment: 10 & 18, LCES

- Monitor each other, watch for symptoms (Firefighter Health Screening Tool).
- Never share PPE, UTV & flight helmets, radios, or other equipment
- Implement daily decontamination procedures of apparatus and equipment
- Adjust operational periods to allow for additional COVID-19 logistics.
- Plan for overnight lodging/camping/feeding scenarios that maintain separation from other fire personnel and community

WILDLAND FIRE COVID-19 SCREENING TOOL

Today or in the past 24 hours, have you had any of the following symptoms¹?

Symptom
Cough more than expected?
Shortness of breath or difficulty breathing?
Fever? Chills?
Muscle pain, outside your normal for firefighting?
Sore throat?
New loss of taste or smell?
Fatigue, outside your normal for firefighting?
Headache, outside your normal for firefighting?
Congestion or runny nose, outside your normal for firefighting?
Nausea or vomiting
Diarrhea
<i>* Take temperature with no-touch thermometer, if available *</i>

MEDICAL PLAN (ICS 206)

1. Incident Name: West Lolo Complex	2. Operational Period: Date: 08-24-21 Time: 0630-2130
--	--

3. Medical Aid Stations:					
Name	LWD	Location	Contact Number/Frequency	Paramedics on Site?	
Jeff Cummings (EMTB/MEDL)	8/25	ICP	317-730-6653	<input type="checkbox"/> Yes	<input checked="" type="checkbox"/> No
Jeff Hatch (EMTF/MEDL)	9/2	ICP	602-300-2156	<input checked="" type="checkbox"/> Yes	<input type="checkbox"/> No
Sherri McDougal (AEMF/MEDL) (t)	8/25	ICP	715-783-0075	<input type="checkbox"/> Yes	<input checked="" type="checkbox"/> No
Joanah Meyer (EMTF)	8/31	Repair Group	413-695-5224	<input type="checkbox"/> Yes	<input checked="" type="checkbox"/> No
Ambo 2 (BLS)	8/31	ICP	406-890-9967	<input type="checkbox"/> Yes	<input checked="" type="checkbox"/> No
REMS-1 EMS Team	8/26	J	503-803-8107	<input checked="" type="checkbox"/> Yes	<input type="checkbox"/> No
Ambo 1 (ALS)	8/29	J	503-515-8530	<input checked="" type="checkbox"/> Yes	<input type="checkbox"/> No
Ambo 3 (ALS)	8/31	N	541-844-9033	<input checked="" type="checkbox"/> Yes	<input type="checkbox"/> No
Ambo 4 (ALS)	9/3	Repair Group	623-326-4635	<input checked="" type="checkbox"/> Yes	<input type="checkbox"/> No
UTV 1	9/3	Repair Group	570-241-7757	<input checked="" type="checkbox"/> Yes	<input type="checkbox"/> No
UTV 2	9/4	J	541-285-8890	<input checked="" type="checkbox"/> Yes	<input type="checkbox"/> No
Tracia Garcia (EMTF)	9/4	N	602-819-1334	<input type="checkbox"/> Yes	<input checked="" type="checkbox"/> No
Rebecca Wallace (EMPF)	9/4	N	406-239-1811	<input checked="" type="checkbox"/> Yes	<input type="checkbox"/> No

4. Transportation: (indicate air or ground):

In-Area Ambulance Services				
Ground Ambulance Service	Location	Number/Frequency	EMS Level	
Plains Ambulance	Plains, MT	911 (office 406-826-3670)	<input checked="" type="checkbox"/> ALS	<input checked="" type="checkbox"/> BLS
Thompson Falls Ambulance	Thompson Falls, MT	911 or through the MIDC	<input type="checkbox"/> ALS	<input checked="" type="checkbox"/> BLS
Air Ambulance Service	Location	Number/Frequency	EMS Level	
Two Bears Air (45 min response time)	Flathead, MT	406-758-5610	<input checked="" type="checkbox"/> ALS	<input type="checkbox"/> BLS
Life Flight Network (32 min response time)	Missoula, MT	911 or through the MIDC	<input checked="" type="checkbox"/> ALS	<input type="checkbox"/> BLS

5. Hospitals:

Hospital Name	Address	Contact Number	Travel Time		Trauma Center	Burn Center	Helipad
			Air	Ground			
Clark Fork Valley	10 Kruger Rd, Plains MT 59859	406-826-4875	N/A	5 min	<input checked="" type="checkbox"/> Yes Level: 4	<input type="checkbox"/> Yes <input checked="" type="checkbox"/> No	<input checked="" type="checkbox"/> Yes <input type="checkbox"/> No
St. Patrick's Hospital	500 W Broadway, Missoula, MT 59859	406-543-7271	25 min	90 min	<input checked="" type="checkbox"/> Yes Level: 2	<input type="checkbox"/> Yes <input checked="" type="checkbox"/> No	<input checked="" type="checkbox"/> Yes <input type="checkbox"/> No
Sacred Heart Hospital	101 W 5 th , Spokane, WA, 99204	509-474-3344	50 min	150 min	<input checked="" type="checkbox"/> Yes Level: 1	<input type="checkbox"/> Yes <input checked="" type="checkbox"/> No	<input checked="" type="checkbox"/> Yes <input type="checkbox"/> No
Harborview Medical Ct.	325 Ave., Seattle, WA 98104	206-744-3074	90 min	390 min	<input checked="" type="checkbox"/> Yes Level: 1	<input checked="" type="checkbox"/> Yes <input type="checkbox"/> No	<input checked="" type="checkbox"/> Yes <input type="checkbox"/> No

- 6. Special Medical Emergency Procedures:**
- Identify on scene IWI commander by name and position. Announce "Medical Emergency".
 - Patient or nearest responder notifies Group Supervisor who will respond to the scene and become the "incident within an incident" (IWI) commander.
 - Group Supervisor will notify nearest medical responder and ICP-Communications of the incident
 - **Use the "8 Line" report attached to the back of this IAP or page 118 of the IRPG.**
 - Urgent Care is for non-Life-threatening medical care.

7. Prepared by (MEDL): Sherri McDougal, MEDL(t) Signature: *Sherri McDougal* Jeff Cummings, MEDL Signature: *Jeff Cummings*

8. Approved by (SOF2): Paul Churchill Signature: */s/ Paul Churchill*

ICS 206	IAP Page _____	Date/Time: 8/21/21 @ 1600
---------	----------------	---------------------------

Aviation Response Plan

1. Evaluate patient for Code Green-Yellow-Red per Medical Incident Report 8 Line
2. Contact Two Bears Air for hoist capable mission
3. Move patient to extraction point for extraction
4. If necessary, ground-transport patient off fire-line to airport in Plains Mt for intercept with LifeFlight

Helicopter Landing Zones

Landing Zone:	Coordinates:	Landing Zone:	Coordinates:
H-5/DP16 Zulu	Lat 47°36.338' Long 155°18.675'		
Plains Airport	Lat 47°47.4742' Long 114° 90.859'		

INCIDENT RADIO COMMUNICATIONS PLAN			Incident Name WEST LOLO COMPLEX			Date/Time Prepared 8/23/21			Operational Period Date/Time 8/24/21 0600 - 8/24/21 2000		
Ch #	Function	Channel Name/Trunked Radio System Talkgroup	Assignment	RX Freq	N or W	RX Tone/NAC	TX Freq	N or W	Tx Tone/NAC	Mode A, D or M	Remarks
1	TACTICAL CHNL	WEST DIR		172.3875		\$F7E	172.3875		\$4F9	D	UNASSIGNED
2	REPEATER	COUGAR		172.3875		\$F7E	164.1750		\$430	D	UNASSIGNED
3	REPEATER	CAMELS		172.3875		\$F7E	164.1750		\$455	D	UNASSIGNED
4	REPEATER	EDDY MT		172.3875		\$F7E	164.1750		\$526	D	UNASSIGNED
5	REPEATER	KEYSTONE		172.3875		\$F7E	164.1750		\$555	D	UNASSIGNED
6	REPEATER	LOOKOUT		172.3875		\$F7E	164.1750		\$5B6	D	UNASSIGNED
7	REPEATER	RICHARDS		172.3875		\$F7E	164.1750		\$68F	D	UNASSIGNED
8	REPEATER	STARK		170.6875		\$F7E	164.1000		\$40B	D	UNASSIGNED
9	REPEATER	PORTABLE		172.3875		\$F7E	164.1750		\$5EA	D	UNASSIGNED
10	TACTICAL CHNL	COMMON 1		163.7125			163.7125			A	UNASSIGNED
11	TACTICAL CHNL	COMMON 2		168.6125			168.6125			A	UNASSIGNED
12	TACTICAL CHNL	GYPPO LOGGER		151.9250			151.9250			A	UNASSIGNED
13	TACTICAL CHNL	MLA LOGGER		151.5050			151.5050		94.8	A	UNASSIGNED
14	RED	RED		154.0700			154.0700		156.7	A	MUTUAL AID
15	TAN	TAN		155.3400			155.3400		156.7	A	MED A/G PRI
16	AIR GUARD	AIR GUARD		168.6250			168.6250		110.9	A	AIR GUARD
Prepared by (Communications Unit) W LOLO COMMS 720-428-0546 / COML-T HERRING 505-328-3896						Incident Location LOLO NF, CONTROLLED UNCLASSIFIED INFORMATION//BASIC County State MT Latitude N Longitude W					

The convention calls for frequency lists to show four digits after the decimal place, followed by either an "N" or a "W", depending on whether the frequency is narrow or wide band. Mode refers to either "A" or "D" indicating analog or digital (e.g. Project 25) or "M" indicating mixed mode. All channels are shown as if programmed in a control station, mobile or portable radio. Repeater and base stations must be programmed with the Rx and Tx reversed.

Logistics Schedule

Food

- Coffee – (0500-0900)
- Breakfast – (0600-0900)
- Lunch – Sack available
- Dinner – (1800-2100)

Shower Schedule

- 0500-1200 and 1400-2100

Quiet Time Schedule

- 2100 – 0500 (8 hour work rest timeframe)



West Lolo Finance Procedure

Finance Email: 2021.westlolo.finance@firenet.gov

Directions for emailing Documents:

<p>Contract Resources Send To: 2021.westlolo.finance@firenet.gov SUBJECT: Include Key Word: Equipment</p>	<p>Overhead, Crews, and Cooperator Resources Send To: 2021.westlolo.finance@firenet.gov SUBJECT: Include Key Word: Time</p>
--	---

DOCUMENTS TO EMAIL TO FINANCE

	<p>Overhead, Crews, and Cooperator Resources</p>	<p>Regular Government Personnel & ADs / Cooperator attachments: Check-In: Crew Manifests, MOUs, or Cooperative Agreement (if applies), AD Single Hire Sheet/RO Daily: Crew Time Report (CTR), Shift Ticket (<i>when applies</i>), receipts (fuel issues, TV receipts, etc.) @Demob: Signed OF288, Final Equipment Use Invoice (Cooperator), Demob Sheet</p>
	<p>Contract Resources</p>	<p>Private: Contractor Attachments: @Check-In: Resource Oder, Full Contract/Agreement, Certifications (<i>if required</i>), Pre-Inspection Daily: <u>SHIFT Tickets</u>, receipts (fuel issues, claims, etc.) @Demob: Contractor Evaluations, Final Shift Tickets and receipt for Addition/Deductions, Post-Inspection, Final Signed Invoices, Demob Checkout Sheet (<i>ICS 221</i>)</p>

FINANCE DEMOB PROCEDURES

All Resource will be sent their **DRAFT OF-288/OF-286's** via the Finance email. 12 hours will be provided to allow the resource to review their document and reply back to Finance with the statement "No Corrections Necessary" or a description of any issues. After Finance receives the email, any discrepancies will be resolved. Next, the resource is sent the **FINAL DOCUMENT** for signature. They will then email the signed document back to Finance, if able. If you are unable to sign, respond to that effect and we will digitally sign on your behalf. Finance will then sign the **FINAL DOCUMENT** and email it back to the resource. This completes the process.



HUMAN RESOURCE MESSAGE

There is zero tolerance for drugs and alcohol on this fire incident.

You are always responsible for how you act and what you say...
no matter how you feel.

Incident Personnel Responsibilities:

Incident personnel have the responsibility to conduct themselves in a manner that supports a discrimination and harassment-free work environment.

Incident Personnel Rights:

Incident personnel have the right to work in a harassment-free environment where they are treated with dignity and respect.

It is the responsibility of all incident personnel to practice mutual respect for other personnel.

Debby Hassel, HRSP

(979) 255-5513

hrrspfire@gmail.com



Training Message

Check In – If you have a position task book (PTB), scan the Master QR code to get to the training QR code. There you initiate the check in process with the Incident Training Specialist. Don't forget to email a copy of your qualification card and position task book cover to Robbie Hollingsworth at 2021.westlolo.plans@firenet.gov

Trainee Demob - In order to receive credit for your assignment, you must close out with the Incident Training Specialist prior to departure.

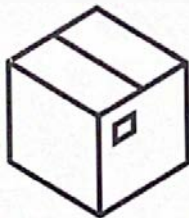
Close out requirements include:

1. Ensure your trainer(s)/evaluator(s) has/have initialed completed tasks in your PTB.
2. Obtain an Incident Performance Rating (please sign in the appropriate block at the bottom of the form)
3. Obtain an Evaluation record
4. If evaluator initialed #1 on your Evaluation Record, ensure he/she signs as final evaluator (located on the backside of your PTB cover page)
5. Close out with TNSP and email all documentation (including item #4, When appropriate) to 2021.westlolo.plans@firenet.gov



Southern Area Incident Management Gold Team Fire Information

Need something shipped to firecamp? Use the following address only:



Attention: West Lolo Complex Fire Camp
[Your Name]
83 Helterline Road
Plains, Montana 59859

Lost and Found: Turn in lost items and claim items lost at the Information Officer tent!



Photos can be texted to Public Information Officer Brook Smith at: 865-603-5217

<https://inciweb.nwcg.gov/incident/7620>

<https://www.facebook.com/WestLoloComplex/>

OR [scan the QR code with your phone's camera!]

OR [scan the QR code with your phone's camera!]



Steps in the Demob process

- **Note of your demob time listed in the Demob List**
- If you are overhead, try to close out virtually by following the process on the Finance Page.
- Return all accountable property to the Supply Unit, and/or Communications.
- Have equipment inspected at Ground Support and go through Weed Wash.
- Submit CTRs/Shift Tickets and FINALIZE your OF-288/OF-286, read Finance Procedure page for more instructions.
- Scan the QR code below to provide demob info if Driving. **We need you to provide your ETD/ETA, and RON city, if taking more than one day to drive home.**

Demob Contact: Jeff DeMatteis, 720-441-8211

Email: 2021.westlolo.demob@firenet.gov

QR Code for Driving



West Lolo Complex Documentation Process

1. Name files in accordance with the standardized NWCG naming conventions:
{DocType}_{Version}_{Date}_{IncidentNumber}

EXAMPLE: UNIT DAILY LOGS – ICS 214

214_HowellJocelyn_20210814_000893

2. File your docs in the "eDoc Box". Pick 1 of the following methods:

A. Drop them daily into the 'eDoc Box' in the General Channel under 'INBOX for Documentation'.

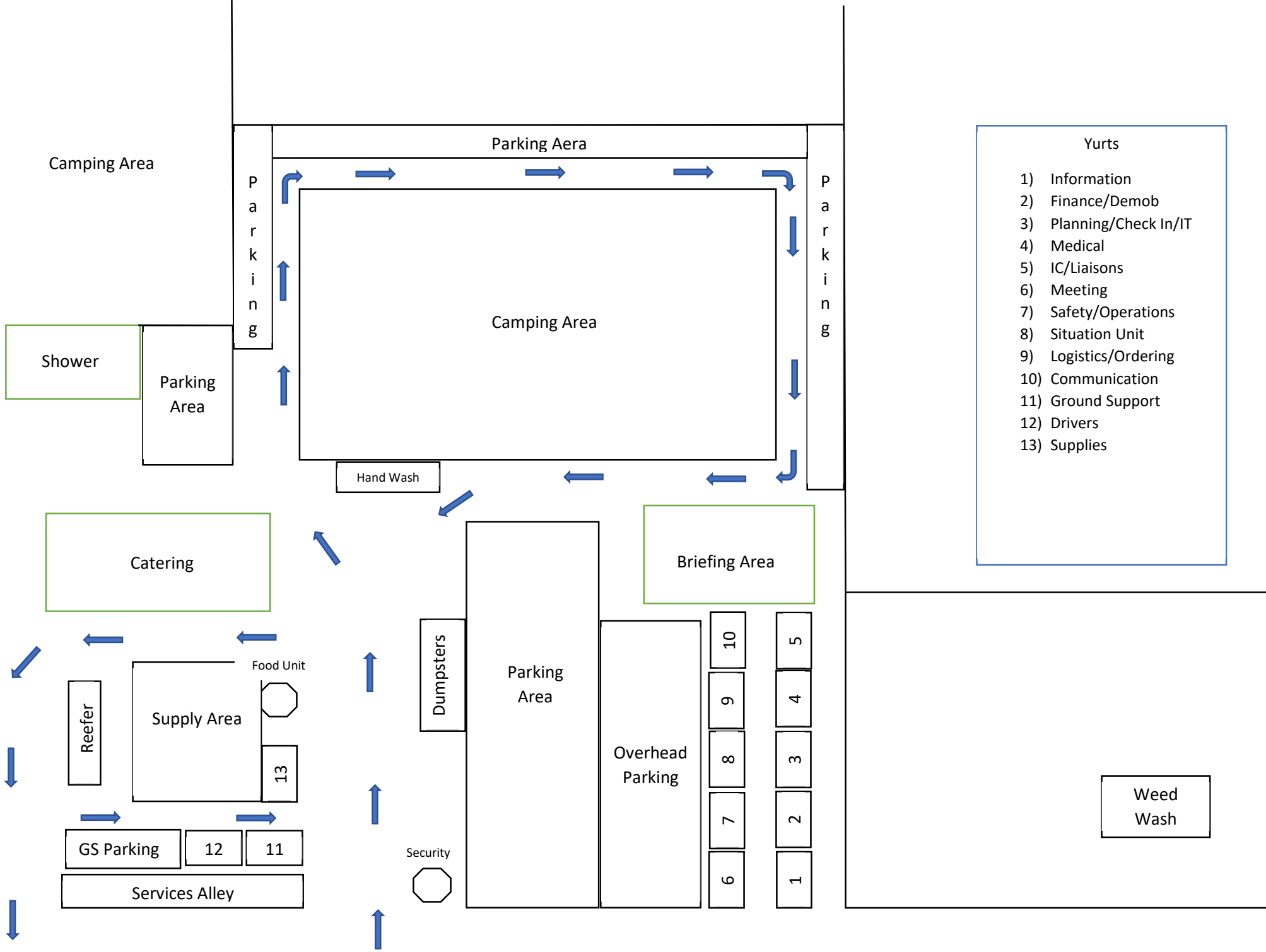
B. Email them daily to jocelyn_howell@firenet.gov

All documentation will be filed electronically in TEAMS for the West Lolo Complex. There are no paper copies or paper doc boxes. If you need to scan files, there is one available in the Plans room at ICP. If you have questions about what to file or how, please reach out!

Questions about the process? Need help?

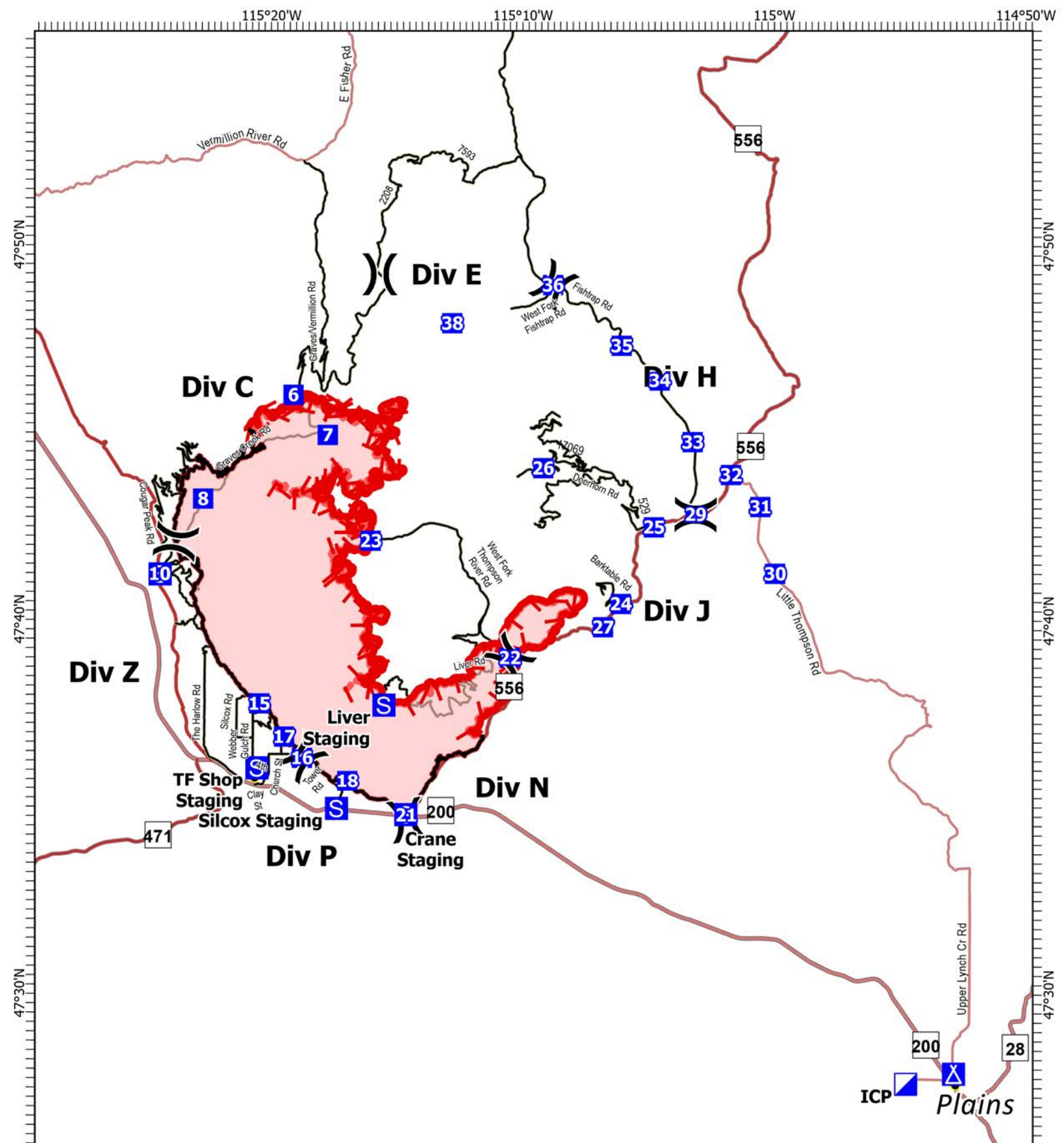
Jocelyn Howell- DOCL(t)

jocelyn_howell@firenet.gov or 214-934-0138



- Yurts**
- 1) Information
 - 2) Finance/Demob
 - 3) Planning/Check In/IT
 - 4) Medical
 - 5) IC/Liaisons
 - 6) Meeting
 - 7) Safety/Operations
 - 8) Situation Unit
 - 9) Logistics/Ordering
 - 10) Communication
 - 11) Ground Support
 - 12) Drivers
 - 13) Supplies

Weed Wash



Created by: SA Gold Team
 8/23/2021 1651
 North American 1983 Datum. LatLong Grid

IAP Map

West Lolo Complex
 MT-LNF-000893
 8/24/2021 Day

38688 acres at 8/17/21 @ 1600

- ▭ Wildfire Daily Fire Perimeter
- ▬ Fire Edge
- Contained Line

ICP ▬ X Plains

Gold Team Phone List

COMMAND			Chief	Thomas Barrett - v	478-550-6372
Incident Commander	Debbie Beard	850-524-9966	Chief (t)	Kelly Russell	850-294-8400
Deputy Incident Commander	Marty Bentley	423-584-1682	Resource Unit Leader	Aerin Land	305-432-6695
Liaison Officer	Michael Wright	970-819-2890	Resource Unit Leader (t)	Jocelyn Howell	214-934-0138
Liaison Officer (t)	Robert Claybrook	859-490-0653	Status Check-In Recorder (t)	Paula Hensley	606-275-2140
Liaison Officer (t)	Jeffrey Gardner	706-260-6296	Status Check-In Recorder (t)	Kenneth Parker	770-468-5459
Covid Coordinator (t)	Bradley Cooper	318-451-5074	Situation Unit Leader	Terry Bowerman	423-552-3323
Public Information Officer	Michelle Burnett	803-920-6167	Situation Unit Leader (t)	Laila Lienesch	541-760-1484
Public Information Officer	Andrew Gray - v	850-797-4824	Incident Technology Supt Splst	Kevin Curry - v	732-684-2999
Public Information Officer (t)	Cathryn Dowd -v	828-412-1521	Incident Technology Supt Splst (t)	Joshua Skidmore	662-891-3533
Public Information Officer (t)	Emily Cleaver -v	931-436-0080	GIS Specialist	Ethan Robertson	912-512-3496
Public Information Officer (t)	Brook Smith	865-603-5217	GIS Specialist (t)	Clayton Cooley	601-270-8562
Public Information Officer (t)	Tricia Boles	606-627-5398	Fire Behavior Analyst	Kelly Cagle	336-302-0343
Public Information Officer (t)	Ray Butler	865-250-8980	Demobilization Unit Leader	Jeff DeMatteis	720-441-8211
Public Information Officer (t)	Kari Hines	512-375-0354	Training Specialist	Robbie Hollingsworth -v	601-300-1396
Public Information Officer (t)	Ginelle Heller	404-782-9894	LOGISTICS		
Safety Officer	Paul Churchill	843-259-9884	Chief	Cameron Crisp	304-635-2035
Safety Officer	Richard Kelley	850-447-1344	Chief	Thomas Philipps	936-404-8451
Safety Officer	Shawn Dugger	850-508-7736	Chief (t)	Carl Bauer	719-431-2905
Safety Officer (t)	Jeffery Henderson	479-518-3162	Chief (t)	Mark Eaton	850-570-9091
Safety Officer (t)	Steve Gray	770-655-8002	Supply Unit Leader	Lemuel Cooksey	850-508-9097
OPERATIONS			Communications Unit Leader	George Rosenthal	936-707-1832
Chief	Jeffrey Schardt	706 280-5498	Communications Unit Leader (t)	Shannon Herring	470-201-9582
Chief	Shawn Nagle	662-231-4024	Ordering Manager	Leigh Ostin	352-445-1366
Chief	Loy Elam	336-467-7254	Ground Support Unit Leader	Todd Waller	501-337-6308
Chief Field	Josh Graham	501-545-3088	Ground Support Unit Leader	Willard Stanley	850-635-1035
Chief	C Bertram Plante	252-475-4662	Equipment Manager	Lanton Chumley	936-635-3720
Chief (t)	Kevin Grodi	321-408-2728	Equipment Manager (t)	Brian Truss	936-5464338
Chief (t) Field	Matthew Johnson	870-415-0185	Medical Unit Leader	Jeff Cummings	317-730-6653
DIVS	Greg Salansky	865-414-6461	Medical Unit Leader	Jeff Hatch	435-414-3521
DIVS	Jason Klawinsky	936-520-8827	Medical Unit Leader (t)	Sherri McDougal	715-783-0075
DIVS	Heath Thomas	479-667-2191	Facilities Unit Leader (t)	John Dunlap	850-545-8573
DIVS	Jared Nobles	352-625-2520	Receiving/Distribution Manager	Vince Mullins	850-694-8680
DIVS	Daniel Gore	478-456-8516	Receiving/Distribution Manager (t)	Randall Hamilton	606-864-4163
DIVS (t)	Matthew Moe	928-220-0043	Security Manager	Joshua Hindman	509-366-8975
DIVS (t)	Brenton Holt	870-715-0402	FINANCE		
DIVS (t)	Matt Hundt	775-340-2991	Chief	Jason Gillis	912-314-9233
AIR OPERATIONS			Chief (t)	Laura Wilson	765-427-7564
Air Operations Branch Dir	Larry Trapp	307-320-6566	Cost Unit Leader	Tom Steele	770-363-3583
PLANNING			Cost Unit Leader (t)	Stacey Eaton	850-375-9464
Chief	Jessica Hollingsworth	601-966-0331	Comps/Claims	Terri McDonald -v	352-454-5385
Chief	Carol O'Bryan	903-263-8704	Time	Donna Bentley	706-474-3216

MEDICAL PLAN (ICS 206 WF)

Controlled Unclassified Information//Basic

Medical Incident Report

FOR A NON-EMERGENCY INCIDENT, WORK THROUGH CHAIN OF COMMAND TO REPORT AND TRANSPORT INJURED PERSONNEL AS NECESSARY.

FOR A MEDICAL EMERGENCY: IDENTIFY ON SCENE INCIDENT COMMANDER BY NAME AND POSITION AND ANNOUNCE "MEDICAL EMERGENCY" TO INITIATE RESPONSE FROM IMT COMMUNICATIONS/DISPATCH.

Use the following items to communicate situation to communications/dispatch.

1. CONTACT COMMUNICATIONS / DISPATCH (**Verify correct frequency prior to starting report**)

Ex: "Communications, Div. Alpha. Stand-by for Emergency Traffic."

2. INCIDENT STATUS: *Provide incident summary (including number of patients) and command structure.*

Ex: "Communications, I have a Red priority patient, unconscious, struck by a falling tree. Requesting air ambulance to Forest Road 1 at (Lat./Long.) This will be the Trout Meadow Medical, IC is TFLD Jones. EMT Smith is providing medical care."

Severity of Emergency / Transport Priority	<input type="checkbox"/> RED / PRIORITY 1 Life or limb threatening injury or illness. Evacuation need is IMMEDIATE <i>Ex: Unconscious, difficulty breathing, bleeding severely, 2° – 3° burns more than 4 palm sizes, heat stroke, disoriented.</i> <input type="checkbox"/> YELLOW / PRIORITY 2 Serious Injury or illness. Evacuation may be DELAYED if necessary. <i>Ex: Significant trauma, unable to walk, 2° – 3° burns not more than 1-3 palm sizes.</i> <input type="checkbox"/> GREEN / PRIORITY 3 Minor Injury or illness. Non-Emergency transport <i>Ex: Sprains, strains, minor heat-related illness.</i>	
Nature of Injury or Illness & Mechanism of Injury		<i>Brief Summary of Injury or Illness (Ex: Unconscious, Struck by Falling Tree)</i>
Transport Request		<i>Air Ambulance / Short Haul/Hoist Ground Ambulance / Other</i>
Patient Location		<i>Descriptive Location & Lat. / Long. (WGS84)</i>
Incident Name		<i>Geographic Name + "Medical" (Ex: Trout Meadow Medical)</i>
On-Scene Incident Commander		<i>Name of on-scene IC of Incident within an Incident (Ex: TFLD Jones)</i>
Patient Care		<i>Name of Care Provider (Ex: EMT Smith)</i>

3. INITIAL PATIENT ASSESSMENT: *Complete this section for each patient as applicable (start with the most severe patient)*

Patient Assessment: See IRPG page 106

Treatment:

4. TRANSPORT PLAN:

Evacuation Location (if different): *(Descriptive Location (drop point, intersection, etc.) or Lat. / Long.)* Patient's ETA to Evacuation Location:

Helispot / Extraction Site Size and Hazards:

5. ADDITIONAL RESOURCES / EQUIPMENT NEEDS:

Example: Paramedic/EMT, Crews, Immobilization Devices, AED, Oxygen, Trauma Bag, IV/Fluid(s), Splints, Rope rescue, Wheeled litter, HAZMAT, Extrication

6. COMMUNICATIONS: Identify State Air/Ground EMS Frequencies and Hospital Contacts as applicable

Function	Channel Name/Number	Receive (RX)	Tone/NAC *	Transmit (TX)	Tone/NAC *
COMMAND					
AIR-TO-GRND					
TACTICAL					

7. CONTINGENCY: **Considerations:** *If primary options fail, what actions can be implemented in conjunction with primary evacuation method? Be thinking ahead.*

8. ADDITIONAL INFORMATION: *Updates/Changes, etc.*

REMEMBER: Confirm ETA's of resources ordered. Act according to your level of training. Be Alert. Keep Calm. Think Clearly. Act Decisively.