

# Incident Action Plan



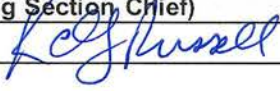
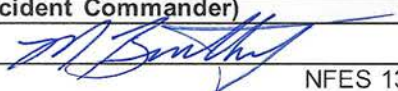
Operational Period  
Wednesday 08/25/2021 0600 - 2100

West Lolo Complex  
MT-LNF-000893  
P1N5AN (0116)

[2021.westlolo.finance@firenet.gov](mailto:2021.westlolo.finance@firenet.gov)

Incident Information



<b>INCIDENT OBJECTIVES</b>	1. Incident Name <b>West Lolo Complex</b>	2. Date Prepared 8/24/2021	3. Time Prepared 1500
	<b>4. Operational Period</b> Wednesday August 25, 2021 0600 - Wednesday August 25, 2021 2100		
<b>5. Leader's Intent</b>			
<ul style="list-style-type: none"> <li>Protect the identified values at risk utilizing full suppression strategies identified by Agency Administrators in alignment with their prioritization of specific values. Risk management tools will be used to evaluate tactics in order to provide for firefighter and public safety while implementing actions that have a high probability of success.</li> <li>The highest priority on this incident is to protect the safety of fire personnel and to protect human life followed by the protection of structures. Ensure LCES is known and understood by everyone, and contingencies and trigger points for disengagement are developed and followed.</li> <li>Maintain a positive and inclusive workplace where all employees are valued and treated with respect.</li> </ul>			
<b>6. Incident Objectives</b>			
<ul style="list-style-type: none"> <li>Address the safety of firefighters, aviation and public through clear communication. Ensure an understanding of strategies and tactics, including a clearly defined and obtainable end state, in order to facilitate sound risk mitigation decision making.</li> <li>Natural and Cultural Resource Values at Risk: Weigh potential suppression actions in consideration of heritage resources, waterways and riparian areas, and bull trout and anadromous fish habitat in order to minimize fire effects and undesirable suppression related effects to these values.</li> <li>Continue to develop and implement the long-term plan for fires in the complex that incorporate management actions in alignment with the protection of identified values, based on current and expected weather and fire behavior. The long-term plan will incorporate primary, alternate, contingency, and emergency plans identifying opportunities for both direct and indirect suppression actions.</li> <li>Maintain and strengthen relationships with the Lolo and Kootenai National Forests; MT DNRC; Sanders County Sheriff, Emergency Managers, and VFD's; community leaders; cooperators; local government and agencies; and private landowners utilizing the most effective platforms available.</li> <li>Provide timely, accurate, and consistent incident information through the press, community meetings, trap lines, briefings and social media. Incident information shall be coordinated between the team and Forest Service Line Officers, MT DNRC Unit Manager, and the Sanders, Missoula, and Clearwater Sheriff Offices.</li> <li>Continue to monitor costs and implement cost effective methods for accomplishing operational objectives.</li> <li>Ensure adherence to current guidance regarding COVID-19 to provide for the health and safety of all incident personnel by implementing the module-of-one concept, social distancing, and masking up as appropriate.</li> </ul>			
<b>7. Attachments</b> (X – if attached)			
<input checked="" type="checkbox"/> Organization List - ICS 203	<input checked="" type="checkbox"/> Medical Plan - ICS 206	<input type="checkbox"/>	_____
<input checked="" type="checkbox"/> Division Assignment Lists - ICS 204	<input checked="" type="checkbox"/> Unit Log 214	<input type="checkbox"/>	_____
	<input checked="" type="checkbox"/> WF206 8 Line	<input type="checkbox"/>	_____
<b>8. Prepared By (Planning Section Chief)</b>		<b>9. Approved By (Incident Commander)</b>	
Kelly Russell, PSC2 (t) 		Marty Bentley, IC 	
ICS 202		NFES 1326	

## ORGANIZATION ASSIGNMENT LIST (ICS 203)

<b>1. Incident Name:</b>		<b>2. Operational Period:</b>	
WEST LOLO COMPLEX		Date/Time From: 08/25/2021 0600      WED	Date/Time To: 08/25/2021 2100      WED
<b>3. Incident Commander(s) and Command Staff:</b>		BASE CAMP MANAGER	CARTY CARSON
IC/UC	MARTY BENTLEY	GROUND SUPPORT UNIT	TODD WALLER, WILLARD STANLEY
INFORMATION OFFICER	MICHELLE BURNETT, A. GRAY -V, R. BIBLE, C. DOWD (T) -V, E. CLEAVER (T) -V, B. SMITH (T), T. BOLES (T), R. BUTLER(T), K. HINES (T), G. HELLER (T),	EQUIPMENT MANAGER	LANTON CHUMLEY, KEELY BENSON(T),BRIAN TRUSS (T)
LIAISON OFFICER	MICHAEL WRIGHT, JEFFREY GARDNER (T), BRADLEY COOPER (T)	FOOD UNIT	TOM PHILIPPS, CARL BAUER (T)
SAFETY OFFICER	PAUL CHURCHILL, S. DUGGAR, L. HOLSOMBACK,J. HENDERSON (T)	COMMUNICATIONS UNIT	GEORGE ROSENTHAL, SHANNON HERRING (T)
COVID COORDINATOR	ROBERT CLAYBROOK (T)	MEDICAL UNIT	JEFF CUMMINGS, JEFF HATCH, SHERRI MCDUGAL (T)
<b>4. Agency/Organization Representative(s):</b>		<b>7. Operations Section:</b>	
<b>Agency/Organization</b>	<b>Name</b>	OPS CHIEF	JEFFREY SCHARDT
LNF AA	CAROLYN UPTON	FIELD OPS	JOSH GRAHAM, BERT PLANTE (T)
WEST LOLO AREP	DAVE WROBLESKI, MIKE FEIGER	PLANNING OPS	SHAWN NAGLE, MATT JOHNSON (T)
LNF COVID SUPPORT	AMY CARMICHAEL	STRUCTURE PROTECTION	KEVIN GRODI (T)
READ	ANN HADLOW, M. MUELLER, M. KALINA, K. RICHARDSON, E. VANDERBEEK		
IBA	DEBBY WESSELIUS, ERIN LALLY (T)	DIVISION/GROUP	CHARLIE/ZULU/PAPA      GREG SALANSKY
<b>5. Planning Section:</b>		DIVISION/GROUP	ECHO      BRIAN ELAM
CHIEF	JESSICA HOLLINGSWORTH, CAROL O'BRYAN, THOMAS BARRETT -V, KELLY RUSSELL (T)	DIVISION/GROUP	HOTEL      BRIAN ELAM
SITUATION UNIT	TERRY BOWERMAN, E. ROBERTSON (T), LAILA LIENESCH (T)	DIVISION/GROUP	JULIET      HEATH THOMAS, MATT HUNDT (T)
FIRE BEHAVIOR ANALYST	KELLY CAGLE	DIVISION/GROUP	NOVEMBER      JASON KLAWINSKY, MATTHEW MOE (T)
GIS SPECIALIST	CLAY COOLEY (T)	DIVISION/GROUP	REPAIR      DANNY GORE
DEMOBILIZATION UNIT	JEFF DEMATTEIS	DIVISION/GROUP	SECURITY      JOSHUA HINDMAN
RESOURCES UNIT	M. SELLERS, A. LAND, J. HOWELL (T)	<b>7b. Air Operations Branch:</b>	
STATUS CHECK-IN	KEN PARKER (T), PAULA HENSLEY (T)	AOBD	LARRY TRAPP
ITSS	KEVIN CURRY -V, JOSH SKIDMORE (T)	AIR SUPPORT SUPERVISOR	CHARLES BARCLAY (T)
HR SPECIALIST	DEBBY HASSEL		
TRAINING SPECIALIST	ROBBIE HOLLINGSWORTH -V	<b>8. Finance/Administration Section:</b>	
INCIDENT METEOROLOGIST	MIKE OTTENWELLER	CHIEF	JASON GILLIS, LAURA WILSON (T)
<b>6. Logistics Section:</b>		TIME UNIT	COLLEEN GADD -V, D. BENTLEY -V
CHIEF	CAMERON CRISP, T. PHILIPPS, M. EATON (T), C. BAUER (T)	COMPENSATION UNIT	TERRI MCDONALD -V
ORDERING MANAGER	LEIGH OSTIN	COST UNIT	TOM STEELE, STACEY EATON (T)
SUPPLY UNIT	LEMUEL COOKSEY	EQ TIME	KELLEY REEVES-V
RCDM	VINCE MULLINS, R. HAMILTON (T)		
FACILITIES UNIT	STEVE WEHERLEY, JOHN DUNLAP (T)		
<b>9. Prepared By:</b>	<b>Name:</b> AERIN LAND	<b>Position/Title:</b> RESL	<b>Signature:</b>
ICS 203	IAP Page	<b>Date/Time:</b> 08/24/2021 0920	



## Fire Weather Forecast

FORECAST NO: 46  
PREDICTION FOR: Wednesday Day Shift  
SHIFT DATE: August 25, 2021  
FORECAST ISSUED: 1800 August 24, 2021

NAME OF FIRE: West Lolo Complex  
UNIT: MT-LNF / Srn. Area Gold Team  
Phone Number: (616) 450-5002  
Incident Meteorologist: Mike Ottenweller

---

**WEATHER DISCUSSION:** Today will be the warmest and driest day of the week. A chilly start will be quickly overwhelmed by abundant sunshine. Temperatures should be able to reach into the low 80s for lower elevations. Minimum RH values will drop into the upper teens. Winds will remain light and mostly terrain-driven. There will be a slight chance for some showers in the afternoon, but very little in the way of rainfall. Some haze/smoke will start to drift over the area from regional fires. Winds will become SW late in the evening along the ridges. This will usher in a slightly cooler and moister airmass for Thursday and the remainder of the week.

### **WEATHER FORECAST FOR TODAY (WEDNESDAY):**

**SKY/WEATHER:** Hazy and becoming partly cloudy. Slight chance of showers in the afternoon.

**Max Temperature:** 75-80 in valleys. 67 to 72 higher elevations.

**Min RH:** Lower elevations 17-22%. Ridges 25-35%.

#### **WINDS:**

##### **-20 ft Level-WINDS**

**Lower Valleys/Lower Slopes:** Light becoming upslope/upvalley 4-8 mph.

**Upper Ridges:** SE 5-10 mph becoming W late in the afternoon.

**-TRANSPORT WINDS:** E 10 mph. **Mixing Height:** 12,000 ft.

**Haines:** 4    **LAL:** 1    **CWR:** 10%.

### **TONIGHT:**

**SKY/WEATHER:** Hazy skies and mostly clear. Slight chance of showers.

**Min Temperature:** 45-50.

**Max RH:** Lower elevations: 70-80%. Ridges: 50-60%.

#### **WINDS:**

##### **-20 ft Level-**

**Valleys/Lower Slopes:** Light/terrain driven 3-6 mph.

**Upper Ridges:** W 5-10 mph.

### **THURSDAY:**

**SKY/WEATHER:** Hazy and becoming partly cloudy. Slight chance of showers.

**Max Temperature:** 75-80 in valleys. 60 to 65 higher elevations.

**Min RH:** Lower elevations 21-26%. Ridges 32-37%.

#### **WINDS:**

##### **-20 ft Level-WINDS**

**Lower Valleys/Lower Slopes:** Light becoming upslope/upvalley 5-10 mph.

**Upper Ridges:** SW 10-15 mph with gusts to 20 mph in the afternoon.

**-TRANSPORT WINDS:** W 12 mph. **Mixing Height:** 6,000 ft.

**Haines:** 3    **LAL:** 1    **CWR:** 10%.

**Outlook Friday through Sunday:** Friday now looks like the best chance for some light rain. Amounts are still too far out to nail down, but around 0.10" or less looks the most likely. It will be cloudy and cooler with breezy SW winds. Winds will shift to NW on Saturday and bring clearing skies and drier conditions for the late weekend.

**FIRE BEHAVIOR FORECAST**

<b>FORECAST NUMBER:</b> #40	<b>TYPE OF FIRE:</b> Wildland
<b>FIRE NAME:</b> West Lolo Complex	<b>OPERATIONAL PERIOD:</b> 8/25/2021 Day Shift
<b>DATE ISSUED:</b> 08/24/2021	<b>TIME ISSUED:</b> 2000
<b>UNT:</b> Lolo National Forest	<b>WRITTEN:</b> Kelly Cagle - FBAN

**FUEL ASSUMPTIONS:** The major fuel type found on the West Lolo Complex is fuel model 10 (mixed conifer with heavy dead/down). There are also areas of TU 5 – which is timber with a shrub component underneath. Fuel arrangement may be a blend of these 2 conditions. There are areas of fuel model 2 (grass with timber overstory) in the lowest elevations.

**WEATHER SUMMARY: Reference fire weather forecast for specifics:** Today will be the warmest and driest day of the week. A chilly start will be quickly overwhelmed by abundant sunshine. Temperatures should be able to reach into the low 80s for lower elevations. Minimum RH values will drop into the upper teens.

**General Fire Behavior Forecast:** RH's today will be the lowest we have seen on this fire in several days. Fine fuel moistures will be low enough for grass fuels to carry fire easily and for timber fuels to possibly creep around just a little, as those fuels remain damp from recent precipitation and are not carrying fire very well. Isolated smokes are probable around the fire area today – especially during the afternoon as things begin to dry out. An isolated torching tree is possible.

**Critical fire behavior thresholds:**

**RH below 25%      Winds greater than 10      1000 hr FM less than 12%      Haines 5 or 6**

**Specific:**

**Division November** – Expect minimal fire behavior. Most fuels remain damp and will not carry fire very well. Some heavies are still consuming and may produce light smoke. RH's today are low enough to allow grass fuels to carry fire and for timber fuels to creep on a sunny slope late in the day. A torching tree might be possible.

**Division Echo/Hotel/Juliet**– Expect minimal fire behavior. Grass fuels could easily carry fire today. Timber fuels could creep around a bit. Heavies will continue to produce isolated smokes. A torching tree might be possible.

Divisions **Charlie/Papa/Zulu** – Expect minimal fire behavior. Timber fuels could creep around a bit today. Grass fuels could easily carry fire. Heavies will continue to produce a minor amount of smoke. An isolated torching tree could be possible.

**Initial Attack** – Low potential for IA activity today. If IA occurs, expect low fire behavior in timber. Grass fuels could have moderate spread rates today in an open and sunny environment.

\*\*\*\*\*

Fine fuel moisture today is -	5-6%	Rates of Spread in Timber- Creeping
Probability of Ignition today -	54%	Rates of Spread in Grass- 4-15 chains/hour
Max Spotting Distance Today-	500 feet	Flame Lengths- 2 to 5 feet as an average

**AIR OPERATIONS** : Inversion likely in the am hours, but skies will quickly clear and be suitable for aviation activities by mid morning.

**FIRE BEHAVIOR SAFETY:** One of the 4 common denominators on tragedy fires is “Engaging fire in light fuels such as grass”. Don’t underestimate spread rates in grass today.

**Division/Group Assignment List (ICS 204 WF)**  
**Controlled Unclassified Information//Basic**

<b>1. Incident Name:</b>				<b>3.</b>		
WEST LOLO COMPLEX				<b>Branch:</b>  <b>THORNE</b>	<b>Division/Group</b>  <b>C/Z/P</b>	
<b>2. Operational Period:</b>						
Date/Time From: 08/25/2021 0600      WED		Date/Time To: 08/25/2021 2100      WED				
<b>4. Operations Personnel</b>						
<b>OPERATIONS CHIEF</b>		JEFF SCHARDT		<b>BRANCH DIRECTOR</b>		
<b>DIVISION/GROUP SUPERVISOR</b>		GREG SALANSKY		<b>AIR ATTACK SUPERVISOR</b>		
<b>5. Resources Assigned this Period</b>						
Strike Team / Task Force / Resource Designator		LWD	Leader	Number Persons	Drop Off PT./Time	Pick Up PT./Time
UNSTAFFED						
<b>6. Control Operations/Work Assignments:</b>						
<p><u>TASK:</u> Monitor fire activity and spread. Maintain coordination and public relations with private landowners in fire impacted area. Assess suppression repair. Backhaul trash and unneeded equipment .</p> <p><u>PURPOSE:</u> To have control features in place that have the highest probability of success for incident resources. Maintain positive relationships with private landowners and cooperators during suppression operations.</p> <p><u>END STATE:</u> The fire is contained at the established control features with minimal impacts to private property, natural resources and values at risk. Local relationships are strengthened through timely communications, cooperation and coordination.</p>						
<b>7. Special Instructions:</b>						
<p>Bert Plante (Day-Field Operations Section Chief Trainee) will be compiling and coordinating all Suppression Repair Plan taskings. Please contact Bert at 252-475-4662.</p> <ul style="list-style-type: none"> <li>• SEE COMM PLAN</li> </ul>						
<b>8. Division/Group Communication Summary</b>						
Function	Channel	RX Frequency N/W	RX Tone/NAC	TX Frequency N/W	TX Tone/NAC	Mode
COMMAND						
TACTICAL						
AIR TO GROUND						
<b>9. Prepared By (Resource Unit Leader)</b>			<b>Approved By (Planning Section Chief)</b>		<b>Date</b>	<b>Time</b>
JOCELYN HOWELL RESL (T)			KELLY RUSSELL - PSC2(T)		08/24/2021	0920

**Division/Group Assignment List (ICS 204 WF)**  
Controlled Unclassified Information//Basic

<b>1. Incident Name:</b>			<b>3.</b>			
WEST LOLO COMPLEX			<b>Branch:</b>		<b>Division/Group</b>	
<b>2. Operational Period:</b>			<b>THORNE</b>		<b>E</b>	
Date/Time From: 08/25/2021 0600      WED	Date/Time To: 08/25/2021 2100      WED					
<b>4. Operations Personnel</b>						
<b>OPERATIONS CHIEF</b> JEFF SCHARDT		<b>BRANCH DIRECTOR</b>				
<b>DIVISION/GROUP SUPERVISOR</b> BRIAN ELAM		<b>AIR ATTACK SUPERVISOR</b>				
<b>5. Resources Assigned this Period</b>						
Strike Team / Task Force / Resource Designator	LWD	Leader	Number Persons	Drop Off PT./Time	Pick Up PT./Time	
UNSTAFFED						
<b>6. Control Operations/Work Assignments:</b>						
<p><b>TASK:</b> Monitor fire behavior and movement. Assess suppression repair needs.</p> <p><b>PURPOSE:</b> Have continuous fuel break from Thompson River Road to Fishtrap to slow eastward progression of fire onto state and private lands. To establish indirect control features, with minimum impact to natural resources, that will be used to stop fire progression.</p> <p><b>END STATE:</b> Fire spread is limited and does not impact state/private lands. Values at risk are not impacted by fire.</p>						
<b>7. Special Instructions:</b>						
<p>Bert Plante (Day-Field Operations Section Chief Trainee) will be compiling and coordinating all Suppression Repair Plan taskings. Please contact Bert at 252-475-4662.</p> <ul style="list-style-type: none"> <li>• SEE COMM PLAN</li> </ul>						
<b>8. Division/Group Communication Summary</b>						
Function	Channel	RX Frequency N/W	RX Tone/NAC	TX Frequency N/W	TX Tone/NAC	Mode
COMMAND						
TACTICAL						
AIR TO GROUND						
<b>9. Prepared By (Resource Unit Leader)</b>		<b>Approved By (Planning Section Chief)</b>		<b>Date</b>	<b>Time</b>	
JOCELYN HOWELL RESL (T)		KELLY RUSSELL - PSC2(T)		08/24/2021	0920	

**Division/Group Assignment List (ICS 204 WF)**  
**Controlled Unclassified Information//Basic**

<b>1. Incident Name:</b>			<b>3.</b>			
WEST LOLO COMPLEX			<b>Branch:</b>		<b>Division/Group</b>	
<b>2. Operational Period:</b>			<b>THORNE</b>		<b>H</b>	
Date/Time From: 08/25/2021 0600	WED	Date/Time To: 08/25/2021 2100				
<b>4. Operations Personnel</b>						
<b>OPERATIONS CHIEF</b>		JEFF SCHARDT		<b>BRANCH DIRECTOR</b>		
<b>DIVISION/GROUP SUPERVISOR</b>		BRIAN ELAM		<b>AIR ATTACK SUPERVISOR</b>		
<b>5. Resources Assigned this Period</b>						
Strike Team / Task Force / Resource Designator		LWD	Leader	Number Persons	Drop Off PT./Time	Pick Up PT./Time
UNSTAFFED						
<b>6. Control Operations/Work Assignments:</b>						
<p><b>TASK:</b> Monitor fire behavior and movement. Assess suppression repair needs.</p> <p><b>PURPOSE:</b> Have continuous fuel break from Thompson River Road to Fishtrap to slow eastward progression of fire onto state and private lands. To establish indirect control features, with minimum impact to natural resources, that will be used to stop fire progression.</p> <p><b>END STATE:</b> Fire spread is limited and does not impact state/private lands. Values at risk are not impacted by fire.</p>						
<b>7. Special Instructions:</b>						
<p>Bert Plante (Day-Field Operations Section Chief Trainee) will be compiling and coordinating all Suppression Repair Plan taskings. Please contact Bert at 252-475-4662.</p> <p>.*SEE COMM PLAN</p>						
<b>8. Division/Group Communication Summary</b>						
Function	Channel	RX Frequency N/W	RX Tone/NAC	TX Frequency N/W	TX Tone/NAC	Mode
COMMAND						
TACTICAL						
AIR TO GROUND						
<b>9. Prepared By (Resource Unit Leader)</b>			<b>Approved By (Planning Section Chief)</b>		<b>Date</b>	<b>Time</b>
JOCELYN HOWELL RESL (T)			KELLY RUSSELL-PSC2(T)		08/24/2021	0920



**Division/Group Assignment List (ICS 204 WF)**  
**Controlled Unclassified Information//Basic**

<b>1. Incident Name:</b>			<b>3.</b>			
WEST LOLO COMPLEX			<b>Branch:</b>		<b>Division/Group</b>	
<b>2. Operational Period:</b>			<b>THORNE</b>		<b>J</b>	
Date/Time From: 08/25/2021 0600      WED	Date/Time To: 08/25/2021 2100      WED					
<b>4. Operations Personnel</b>						
<b>OPERATIONS CHIEF</b>		JEFF SCHARDT		<b>BRANCH DIRECTOR</b>		
<b>DIVISION/GROUP SUPERVISOR</b>		HEATH THOMAS MATT HUNDT (T)		<b>AIR ATTACK SUPERVISOR</b>		
<b>5. Resources Assigned this Period</b>						
Strike Team / Task Force / Resource Designator	LWD	Leader	Number Persons	Drop Off PT./Time	Pick Up PT./Time	
UNSTAFFED			1	ICP/0600	ICP/2100	
<b>6. Control Operations/Work Assignments:</b>						
<p><u>TASK:</u> Monitor slop over on mechanical line. Monitor fire behavior and movement. Assess any suppression repair needs..</p> <p><u>PURPOSE:</u> Have continuous fuel break from Thompson River Road to Fishtrap to slow eastward progression of fire onto state and private lands. To establish indirect control features, with minimum impact to natural resources, that will be used to stop fire progression.</p> <p><u>END STATE:</u> Fire spread is limited and does not impact state/private lands. Values at risk are not impacted by fire.</p>						
<b>7. Special Instructions:</b>						
<p>Bert Plante (Day-Field Operations Section Chief Trainee) will be compiling and coordinating all Suppression Repair Plan taskings. Please contact Bert at 252-475-4662.</p> <ul style="list-style-type: none"> <li>• INDICATES IA RESOURCE</li> <li>• SEE COMM PLAN</li> </ul>						
<b>8. Division/Group Communication Summary</b>						
Function	Channel	RX Frequency N/W	RX Tone/NAC	TX Frequency N/W	TX Tone/NAC	Mode
COMMAND						
TACTICAL						
AIR TO GROUND						
<b>9. Prepared By (Resource Unit Leader)</b>			<b>Approved By (Planning Section Chief)</b>		<b>Date</b>	<b>Time</b>
JOCELYN HOWELL RESL (T)			KELLY RUSSELL - PSC2(T)		08/24/2021	0920

**Division/Group Assignment List (ICS 204 WF)**  
**Controlled Unclassified Information//Basic**

<b>1. Incident Name:</b>			<b>3.</b>			
WEST LOLO COMPLEX			<b>Branch:</b>		<b>Division/Group</b>	
<b>2. Operational Period:</b>			<b>THORNE</b>		<b>N</b>	
Date/Time From: 08/25/2021 0600	WED	Date/Time To: 08/25/2021 2100				
<b>4. Operations Personnel</b>						
<b>OPERATIONS CHIEF</b>		JEFF SCHARDT		<b>BRANCH DIRECTOR</b>		
<b>DIVISION/GROUP SUPERVISOR</b>		JASON KLAWINSKY MATT MOE (T)		<b>AIR ATTACK SUPERVISOR</b>		
<b>5. Resources Assigned this Period</b>						
Strike Team / Task Force / Resource Designator		LWD	Leader	Number Persons	Drop Off PT./Time	Pick Up PT./Time
E-9004 ENG6 MISSISSIPPI 643 *IA		09/02	JASON LEASER	3	ICP /0600	ICP/2100
E-227 ENG6 MT-KNF-E673 *IA		08/28	MURRAY	6	ICP/0600	ICP/2100
ENG6 AZ-COF E382 *IA				3	ICP/0600	ICP/2100
E-177 ENG6 GILA 621 *IA		08/28	DUSTIN ROGER	6	ICP/0600	ICP/2100
O-475 SOF2		09/27	LARRY HOLSOMBACK	1	ICP /0600	ICP/2100
E-214 AMBO #3 ALS		08/31	JENNEL SMITH	2	ICP/0600	ICP/2100
EMPF		09/03	WALLACE	1	ICP/0600	ICP/2100
EMTF		09/03	GARCIA	1	ICP/0600	ICP/2100
EMPF/UTV 2		09/03	SMITH/AUGUSTIN	2	ICP/0600	ICP/2100
<b>6. Control Operations/Work Assignments:</b>						
<p><b>TASK:</b>Secure, cool and mop up fires edge at containment lines. Monitor fire behavior and movement. Back haul excess water handling equipment. Maintain coordination and public relations with private landowners and cooperators.</p> <p><b>PURPOSE:</b> To have control features in place that have the highest probability of success for incident resources. Maintain positive relationships with private landowners and cooperators during suppression operations.</p> <p><b>END STATE:</b> The fire is contained at the established control features with minimal impacts to private property, natural resources and values at risk. Local relationships are strengthened through timely communication, cooperation and coordination.</p>						
<b>7. Special Instructions:</b>						
<p>Bert Plante (Day-Field Operations Section Chief Trainee) will be compiling and coordinating all Suppression Repair Plan taskings. Please contact Bert at 252-475-4662.</p> <ul style="list-style-type: none"> <li>• INDICATES IA RESOURCES</li> <li>• SEE COMM PLAN</li> </ul>						
<b>8. Division/Group Communication Summary</b>						
Function	Channel	RX Frequency N/W	RX Tone/NAC	TX Frequency N/W	TX Tone/NAC	Mode
COMMAND						
TACTICAL						
AIR TO GROUND						
<b>9. Prepared By (Resource Unit Leader)</b>		<b>Approved By (Planning Section Chief)</b>		<b>Date</b>	<b>Time</b>	
JOCELYN HOWELL RESL (T)		KELLY RUSSELL - PSC2(T)		08/24/2021	0920	

**Division/Group Assignment List (ICS 204 WF)**  
**Controlled Unclassified Information//Basic**

<b>1. Incident Name:</b>			<b>3.</b>			
WEST LOLO COMPLEX			<b>Branch:</b>		<b>Division/Group</b>	
<b>2. Operational Period:</b>			<b>THORNE</b>		<b>REPAIR GROUP</b>	
Date/Time From: 08/25/2021 0600	WED	Date/Time To: 08/25/2021 2100				WED
<b>4. Operations Personnel</b>						
<b>OPERATIONS CHIEF</b>				<b>BRANCH DIRECTOR</b>		
<b>DIVISION/GROUP SUPERVISOR</b>		DANNY GORE		<b>AIR ATTACK SUPERVISOR</b>		
<b>5. Resources Assigned this Period</b>						
Strike Team / Task Force / Resource Designator	LWD	Leader	Number Persons	Drop Off PT./Time	Pick Up PT./Time	
TFLD	08/31	CODY JERMYN	1	ICP/0600	ICP/2100	
O-465 TFLD	08/25	THEO JOHNSON	1	ICP/0600	ICP/2100	
TFLD (T)		CASEY CRAFT	1	ICP/0600	ICP/2100	
O-520 HEQB	09/01	DAN CASTILLO	1	ICP/0600	ICP/2100	
HEQB		DUSTIN WAGONER	1	ICP/0600	ICP/2100	
HC1 MT TAYLOR *IA		VERNON JACKSON	14	ICP/0600	ICP/2100	
PTF MOD *IA		COLE BENSON	10	ICP/0600	ICP/2100	
E-226 DZ3 SORLIE	09/02	RICK SORLIE	2	ICP/0600	ICP/2100	
E-55 DZ3 TRAVERS DOZER	08/31	BEN TRAVER	1	ICP/0600	ICP/2100	
E-223 EXCA2 TAYLOR SERVICES	09/03	JEFF MILLER	2	ICP/0600	ICP/2100	
E-229 EXCA3 TRAVERS	09/06		2	ICP/0600	ICP/2100	
O-469.54 SOF2 (T)	08/25	JEFF HENDERSON	1	ICP/0600	ICP/2100	
REMS 1	08/26	MATT FOX	4	ICP/0600	ICP/2100	
E-34 AMBO#1 ALS	08/29	KARI TOMLINSON	2	ICP/0600	ICP/2100	
E-196 AMBO #4 ALS	09/03	KEVIN MCMAHON	2	ICP/0600	ICP/2100	
O-488 EMPF UTV1	09/02	BELCHER	1	ICP/0600	ICP/2100	
O-490 EMTF	08/31	JONAH MEYER	1	ICP/0600	ICP/2100	
<b>6. Control Operations/Work Assignments:</b>						
<b>8. Division/Group Communication Summary</b>						
Function	Channel	RX Frequency N/W	RX Tone/NAC	TX Frequency N/W	TX Tone/NAC	Mode
COMMAND						
COMMAND						
COMMAND						
COMMAND						
TACTICAL						
AIR TO GROUND						
<b>9. Prepared By (Resource Unit Leader)</b>		<b>Approved By (Planning Section Chief)</b>		<b>Date</b>	<b>Time</b>	
AERIN LAND - RESL		KELLY RUSSELL - PSC2(T)		08/24/2021	0920	

**Division/Group Assignment List (ICS 204 WF)**  
 Controlled Unclassified Information//Basic

<b>1. Incident Name:</b>			<b>3.</b>			
WEST LOLO COMPLEX			<b>Branch:</b>		<b>Division/Group</b>	
<b>2. Operational Period:</b>			<b>THORNE</b>		<b>REPAIR GROUP</b>	
Date/Time From: 08/25/2021 0600	WED	Date/Time To: 08/25/2021 2100				
<b>4. Operations Personnel</b>						
<b>OPERATIONS CHIEF</b>				<b>BRANCH DIRECTOR</b>		
<b>DIVISION/GROUP SUPERVISOR</b>		DANNY GORE		<b>AIR ATTACK SUPERVISOR</b>		
<b>6. Control Operations/Work Assignments:</b>						
Task:Conduct: Repair operations on Federal and State lands to the standards set forth in the Repair delegation and follow the guidance provided across private lands. Purpose: To repair damage caused by fire suppression activities during the response to the wildfire. End State: As far as possible, return the landscape, to the state it was in, prior to the wildfire occurrence.						
<b>7. Special Instructions:</b>						
Bert Plante (Day-Field Operations Section Chief Trainee) will be compiling and coordinating all Suppression Repair Plan taskings. Please contact Bert at 252-475-4662.						
<ul style="list-style-type: none"> <li>• SEE COMM PLAN</li> </ul>						
<b>8. Division/Group Communication Summary</b>						
<b>Function</b>	<b>Channel</b>	<b>RX Frequency N/W</b>	<b>RX Tone/NAC</b>	<b>TX Frequency N/W</b>	<b>TX Tone/NAC</b>	<b>Mode</b>
COMMAND						
COMMAND						
COMMAND						
COMMAND						
TACTICAL						
AIR TO GROUND						
<b>9. Prepared By (Resource Unit Leader)</b>			<b>Approved By (Planning Section Chief)</b>		<b>Date</b>	<b>Time</b>
AERIN LAND - RESL			KELLY RUSSELL - PSC2(T)		08/24/2021	0920

**Division/Group Assignment List (ICS 204 WF)**  
**Controlled Unclassified Information//Basic**

<b>1. Incident Name:</b>			<b>3.</b>			
WEST LOLO COMPLEX			<b>Branch:</b>		<b>Division/Group</b>	
<b>2. Operational Period:</b>			<b>THORNE</b>		<b>SECURITY</b>	
Date/Time From: 08/25/2021 0600      WED	Date/Time To: 08/25/2021 2100      WED					
<b>4. Operations Personnel</b>						
<b>OPERATIONS CHIEF</b>				<b>BRANCH DIRECTOR</b>		
<b>DIVISION/GROUP SUPERVISOR</b>		JOSHUA HINDMAN		<b>AIR ATTACK SUPERVISOR</b>		
<b>5. Resources Assigned this Period</b>						
Strike Team / Task Force / Resource Designator		LWD	Leader	Number Persons	Drop Off PT./Time	Pick Up PT./Time
O-472 SEC 1 DAY		08/26	JERALD FLOYD	1	ICP/0530	ICP/2200
SEC1 - NIGHT		08/26	DARRIN SPEEGLE	1	ICP/0530	ICP/2200
<b>6. Control Operations/Work Assignments:</b>						
<p><u>TASK:</u> Staff stationary control points and conduct law enforcement patrol of operational areas.  <u>PURPOSE:</u> To control ingress and egress points to operational area and provide federal law enforcement patrol of operational area to enforce closures and respond to law enforcement incidents.  <u>END STATE:</u> Maintain public and firefighter safety and security of assets assigned to the fire.</p>						
<b>7. Special Instructions:</b>						
<ul style="list-style-type: none"> <li>• Graves Roadblock - Soft closure</li> <li>• Weber Roadblock - Soft closure</li> <li>• Silcox- Soft closure</li> <li>• West Fork Staging Rd-Soft closure</li> <li>• Airport - Staffed 1900 - 0700</li> <li>• Fishtrap &amp; 556 Rd-Soft Closure</li> <li>• 556 Rd at ACM RD-Soft Closure</li> </ul> <p>For further information regarding road closures please contact the local Sheriff.</p>						
<b>8. Division/Group Communication Summary</b>						
Function	Channel	RX Frequency N/W	RX Tone/NAC	TX Frequency N/W	TX Tone/NAC	Mode
COMMAND						
TACTICAL						
LOGISTICS						
AIR TO GROUND						
<b>9. Prepared By (Resource Unit Leader)</b>			<b>Approved By (Planning Section Chief)</b>		<b>Date</b>	<b>Time</b>
AERIN LAND - RESL			KELLY RUSSELL - PSC2(T)		08/24/2021	0920



10. TASK/ MISSION/ ASSIGNMENT (Type/ function includes: Air Tactical, Retardant, Recon, Personnel Transport, Bucket Operations, SAR, etc.)					
TYPE/FUNCTION	PRIORITY	NAME OF PERSONNEL OR CARGO (If applicable) or instructions for tactical aircraft	MISSION START	FLY FROM	FLY TO
Buckets	1		As requested	Helibase	Fire
Recon/PSD/IR	2		As requested	Helibase	Fire
Slings	3		As requested	Helibase	Fire

Fires	Helibase, Dip Sites, Pick Up Sites, etc.
Thorne: N 47° 42.137' X W 115° 18.384'	Plains Helibase(S34): N 47° 28.51' X W 114° 53.96' Elevation: 2470'
	For a complete list see Ops Map:

**Other Assigned Support Equipment**

<p><b><u>REMINDER!!</u></b> A flight risk assessment (GAR) needs to be completed prior to daily missions</p> <p><b>Region 1 CWN Helicopter GAR</b></p>		Helibase Trailer Plains	E-81	
		Hotsy	S-27	
		Water Tender	E-122	
		LUA Plains	S-66	

**Wind Restrictions**

Flights above ground level	Flight Permitted in Winds Less than / Maximum Gust Spread		
	Type 1 Helicopters	Type 2 Helicopters	Type 3 Helicopters
More than 500' AGL	<50kts / Gusts: N/A	<50kts / Gusts: N/A	<50kts / Gusts: N/A
Less than 500' AGL	<40kts / Max Gust Spread: 15kts	<40 kts / Max Gust Spread: 15kts	<30kts / Max Gust Spread: 15kts



## HEALTH AND SAFETY MESSAGE

**INCIDENT:** West Lolo Complex

**DATE:** Wednesday, August 25, 2021

**Major Hazards & Risks:** *Driving, Fatigue*



### Symptoms of Driver Fatigue

Watching for these warning signs can help you recognize that you're fatigued:

- Difficulty focusing and inattentiveness
- Repeated yawning, head bobbing and inability to keep eyes open
- Feeling restless, irritable, or impatient
- Disconnected or wandering thoughts
- Brief lapses in memory or "zoning out"
- Drifting to the shoulder or the adjacent lane
- Shallow breathing, burning eyes, and back tension
- Abnormal driving behavior, such as inappropriate speed, tailgating, or ignoring traffic signs

### Driving Tips to Prevent Fatigue-Related Crashes

You can lower your risk of a crash that puts your life in peril by getting plenty of rest and keeping up a regular sleep schedule. Try to avoid driving alone and traveling late at night. If you start to see any signs of fatigue, pull off the road in a safe, well-lit area and take a nap. On long [road trips](#), take a break every two hours and keep the temperature down inside the car.

Knowing the symptoms of driver fatigue can help prevent fatigue related crashes.

*West Lolo Complex Safety Officers: Paul Churchill, Buddy Kelley, Shawn Duggar, Larry Holsomback, Barry Hogge, Steve Gray (T), and Jeff Henderson (T)*



## INCIDENT SAFETY ANALYSIS 215a

West Lolo Complex - Wednesday, August 25,

8. Location	2021 9. Hazard	6. Control or Abatement Action (Engineering, Administrative, PPE, Avoidance, Education, etc)
Incident	Air Operations	<ul style="list-style-type: none"> <li>~ Avoid transfer of risk from ground to aviation resources.</li> <li>~ Utilize safe and effective strategy and tactics. Involve pilot in mission planning. Conduct thorough risk assessment prior to mission.</li> <li>~As of 8/15/21 flight time will be limited to Civil Twilight per Forest and Regional policy.</li> <li>~ Ensure All aviation operations are integrated and coordinated into incident aviation operations</li> <li>~ Build in contingencies to aircraft limitations. Extended medivac times etc.</li> <li>~ Ensure positive communication with all air resources.</li> </ul>
Fireline	Hazard Trees	<ul style="list-style-type: none"> <li>~ Through daily briefings remind resources about established "Hazard Tree Safety" guidelines.</li> <li>~ Inform resources on shallow rooted trees in fire area. Weakened root systems from drought and fire strain are more receptive to wind fall.</li> <li>~ Establish trigger points for disengagement during high wind events.</li> <li>~ Limit firefighter exposure in areas with potential weakened trees.</li> <li>~ Utilize heavy equipment to remove / reduce hazard tree exposure.</li> </ul>
Fireline	Steep Terrain & Rolling Debris	<ul style="list-style-type: none"> <li>~ Maintain 8'-10' spacing when working &amp; walking.</li> <li>~ Avoid working above personnel when rolling material may impact those below.</li> <li>~ Be on the lookout for rolling rocks, debris, or burning material.</li> <li>~ Evaluate necessity to send personnel in areas with limited access.</li> <li>~ Post lookouts IRPG Pg 7</li> </ul>
Incident	Chain Saw Operations	<ul style="list-style-type: none"> <li>~ Follow "Hazard Tree Safety" guidelines, IRPG Pg 22</li> <li>~ Follow "Procedural Felling Operations" IRPG Pg 85.</li> <li>~ Look up, Look down, Look around for hazard tree indicators.</li> <li>~ Only fell and buck trees within your expertise, and training.</li> <li>~ Do not fall trees during high wind events.</li> <li>~ Ensure proper use of all required PPE.</li> </ul>
Incident	Driving & Traffic	<ul style="list-style-type: none"> <li>~ Schedule shifts that promote travel during daylight hours to reduce driver fatigue and provide for increased reaction time.</li> <li>~ Prepare drivers for fog/smokey/wet road conditions, wildlife and other unexpected hazards.</li> <li>~ Establish incident tempo that reduces urgent operations and operational rush. Promote "Slow and Steady" pace.</li> <li>~ Ensure drivers are with familiar vehicle operations (rental vehicles).</li> </ul>
Fireline	Heavy Equipment Operations	<ul style="list-style-type: none"> <li>~ Provide daily safety briefings to remind about heavy equipment hazards. Always maintain working space.</li> <li>~ Establish traffic control along roadways. Ensure communications are established with operators.</li> <li>~ Identify and communicate hazards in the working area (traffic, power lines, culverts, etc)</li> <li>~ Maintain awareness of specific roadway hazards for heavy equipment.</li> </ul>
Incident	Fatigue & Over Exertion	<ul style="list-style-type: none"> <li>~ Drink 1 quart of water each hour during and after work.</li> <li>~ Rotate crews out of smoky areas.</li> <li>~ Set a reasonable work pace and allow adequate rest breaks while on the project.</li> <li>~ Stagger work crews start time to limit fatigue.</li> <li>~ Use buddy system to monitor personnel of heat related and fatigue issues.</li> <li>~ Follow work / rest guidelines.</li> </ul>

## INCIDENT SAFETY ANALYSIS 215a

Incident	Personal Hygiene / Covid 19	<ul style="list-style-type: none"> <li>~ Adhere to local, agency and IMT policy and direction to prevent spread of virus. Educate incident personnel in policy and practices.</li> <li>~ Ensure self assessments, social distancing, face coverings and personal hygiene.</li> <li>~ Encourage anyone with potential symptoms notifies supervisor immediately.</li> <li>~ Don't share personal items such as water bottles communication devices and utensils.</li> <li>~ Wash hands before meals, and after use of rest room facilities. Follow with hand sanitizer.</li> </ul>
Incident	Incident Camp	<ul style="list-style-type: none"> <li>~ Be aware of camp medical and evacuation plans</li> <li>~ Wear closed toe footwear with acceptable support. Be aware of potential for uneven footing and loose rocks.</li> <li>~ Wear PPE as required for assigned</li> <li>~ Loading and carrying: lift with legs, not back.</li> <li>~ Drive slowly. Max 5 MPH. Watch for pedestrian traffic.</li> <li>~ When Backing: Use a Spotter.</li> <li>~ DO NOT drive or park in sleeping areas.</li> <li>~ Personal Hygiene: Wear Masks, Distance, Wash hands after toilet use and prior to eating.</li> <li>~ Stay active, stretch and walk around often.</li> <li>~ Be Aware there may be Snakes, Insects and other live hazards in camp.</li> <li>~ Alcohol and / or Illegal drugs are prohibited in camp.</li> </ul>
Incident	Wildlife & Livestock	<ul style="list-style-type: none"> <li>~ Provide training on wildlife hazards to all fireline personnel (Moose / Bear/ Buffalo).</li> <li>~ Provide daily reminders of wildlife hazards to all personnel to maintain awareness.</li> <li>~ Ensure personnel are comfortable with use of bear spray (if available) and other deterrents</li> <li>~ Provide guards and other precautions as conditions warrant.</li> </ul>
Incident	Bees, Ticks, Mosquitoes	<ul style="list-style-type: none"> <li>~ Identify personnel with known allergic reactions to stings.</li> <li>~ Provide repellants and nets to prevent stings</li> <li>~ Ensure crew members have medication / EPI pens if needed and others on crew are aware of storage location(s) and how to use.</li> <li>~ Establish inter-crew Incident within Incident process to expedite medical response to allergic fireline personnel.</li> </ul>
Incident	Foot Travel	<ul style="list-style-type: none"> <li>~ Take short steps in potentially slick or slippery areas.</li> <li>~ Use caution on uneven surfaces. While traversing steep terrain on fireline move across slope when possible to travel up or down.</li> <li>~ Place your full attention on walking. Focusing on cell phone while walking is unsafe.</li> <li>~ If you do fall protect your head and back. Brace yourself if possible.</li> </ul>
Fireline	ATV/UTV use	<ul style="list-style-type: none"> <li>~ Ensure equipment is inspected and safe to use.</li> <li>~ Restrict UTV's to max width of 50" on ATV trails due to width and severe out sloped conditions.</li> <li>~ Ensure operator is trained and certified to operate.</li> <li>~ Ensure operator has proper PPE according to the Redbook and/or RMA.</li> <li>~ Question if it is mission critical.</li> </ul>

# COVID Mitigations and Screening Tool



## **Maintain Situational Awareness of The Fire Environment: 10 & 18, LCES**

- Monitor each other, watch for symptoms (Firefighter Health Screening Tool).
- Never share PPE, UTV & flight helmets, radios, or other equipment
- Implement daily decontamination procedures of apparatus and equipment
- Adjust operational periods to allow for additional COVID-19 logistics.
- Plan for overnight lodging/camping/feeding scenarios that maintain separation from other fire personnel and community

## **WILDLAND FIRE COVID-19 SCREENING TOOL**

Today or in the past 24 hours, have you had any of the following symptoms<sup>1</sup>?

Symptom
Cough more than expected?
Shortness of breath or difficulty breathing?
Fever? Chills?
Muscle pain, outside your normal for firefighting?
Sore throat?
New loss of taste or smell?
Fatigue, outside your normal for firefighting?
Headache, outside your normal for firefighting?
Congestion or runny nose, outside your normal for firefighting?
Nausea or vomiting
Diarrhea
<i>* Take temperature with no-touch thermometer, if available *</i>

**MEDICAL PLAN (ICS 206)**

<b>1. Incident Name:</b> West Lolo Complex	<b>2. Operational Period:</b> Date: 08-25-21 Time: 0630-2130
--	--

3. Medical Aid Stations:					
Name	LWD	Location	Contact Number/Frequency	Paramedics on Site?	
Jeff Cummings (EMTB/MEDL)	8/25	ICP	317-730-6653	<input type="checkbox"/> Yes	<input checked="" type="checkbox"/> No
Jeff Hatch (EMTF/MEDL)	9/2	ICP	602-300-2156	<input checked="" type="checkbox"/> Yes	<input type="checkbox"/> No
Sherri McDougal (AEMF/MEDL) (t)	8/25	ICP	715-783-0075	<input type="checkbox"/> Yes	<input checked="" type="checkbox"/> No
Jonah Meyer (EMTF)	8/31	Repair Group	413-695-5224	<input type="checkbox"/> Yes	<input checked="" type="checkbox"/> No
Ambo 2 (BLS)	8/31	ICP	406-890-9967	<input type="checkbox"/> Yes	<input checked="" type="checkbox"/> No
REMS-1 EMS Team	8/26	Repair Group	503-803-8107	<input checked="" type="checkbox"/> Yes	<input type="checkbox"/> No
Ambo 1 (ALS)	8/29	Repair Group	503-515-8530	<input checked="" type="checkbox"/> Yes	<input type="checkbox"/> No
Ambo 3 (ALS)	8/31	N	541-844-9033	<input checked="" type="checkbox"/> Yes	<input type="checkbox"/> No
Ambo 4 (ALS)	9/3	Repair Group	623-326-4635	<input checked="" type="checkbox"/> Yes	<input type="checkbox"/> No
UTV 1	9/3	Repair Group	570-241-7757	<input checked="" type="checkbox"/> Yes	<input type="checkbox"/> No
UTV 2	9/4	N	541-285-8890	<input checked="" type="checkbox"/> Yes	<input type="checkbox"/> No
Tracia Garcia (EMTF)	9/4	N	602-819-1334	<input type="checkbox"/> Yes	<input checked="" type="checkbox"/> No
Rebecca Wallace (EMPF)	9/4	N	406-239-1811	<input checked="" type="checkbox"/> Yes	<input type="checkbox"/> No

**4. Transportation:** (indicate air or ground):

In-Area Ambulance Services				
Ground Ambulance Service	Location	Number/Frequency	EMS Level	
Plains Ambulance	Plains, MT	911 (office 406-826-3670)	<input checked="" type="checkbox"/> ALS	<input checked="" type="checkbox"/> BLS
Thompson Falls Ambulance	Thompson Falls, MT	911 or through the MIDC	<input type="checkbox"/> ALS	<input checked="" type="checkbox"/> BLS
Air Ambulance Service	Location	Number/Frequency	EMS Level	
Two Bears Air (45 min response time)	Flathead, MT	406-758-5610	<input checked="" type="checkbox"/> ALS	<input type="checkbox"/> BLS
Life Flight Network (32 min response time)	Missoula, MT	911 or through the MIDC	<input checked="" type="checkbox"/> ALS	<input type="checkbox"/> BLS

**5. Hospitals:**

Hospital Name	Address	Contact Number	Travel Time		Trauma Center	Burn Center	Helipad
			Air	Ground			
Clark Fork Valley	10 Kruger Rd, Plains MT 59859	406-826-4875	N/A	5 min	<input checked="" type="checkbox"/> Yes Level: 4	<input type="checkbox"/> Yes <input checked="" type="checkbox"/> No	<input checked="" type="checkbox"/> Yes <input type="checkbox"/> No
St. Patrick's Hospital	500 W Broadway, Missoula, MT 59859	406-543-7271	25 min	90 min	<input checked="" type="checkbox"/> Yes Level: 2	<input type="checkbox"/> Yes <input checked="" type="checkbox"/> No	<input checked="" type="checkbox"/> Yes <input type="checkbox"/> No
Sacred Heart Hospital	101 W 5 <sup>th</sup> , Spokane, WA, 99204	509-474-3344	50 min	150 min	<input checked="" type="checkbox"/> Yes Level: 1	<input type="checkbox"/> Yes <input checked="" type="checkbox"/> No	<input checked="" type="checkbox"/> Yes <input type="checkbox"/> No
Harborview Medical Ct.	325 Ave., Seattle, WA 98104	206-744-3074	90 min	390 min	<input checked="" type="checkbox"/> Yes Level: 1	<input checked="" type="checkbox"/> Yes <input type="checkbox"/> No	<input checked="" type="checkbox"/> Yes <input type="checkbox"/> No

**6. Special Medical Emergency Procedures:**

- Identify on scene IWI commander by name and position. Announce "Medical Emergency".
- Patient or nearest responder notifies Group Supervisor who will respond to the scene and become the "incident within an incident" (IWI) commander.
- Group Supervisor will notify nearest medical responder and ICP-Communications of the incident
- **Use the "8 Line" report attached to the back of this IAP or page 118 of the IRPG.**
- Urgent Care is for non-Life-threatening medical care.

**7. Prepared by (MEDL):** Sherri McDougal, MEDL(t) Signature: *Sherri McDougal* Jeff Cummings, MEDL Signature: *Jeff Cummings*

**8. Approved by (SOF2):** Paul Churchill Signature: */s/ Paul Churchill*

ICS 206	IAP Page ____	Date/Time: 8/24/21 @ 1600
---------	---------------	---------------------------

**Aviation Response Plan**

1. Evaluate patient for Code Green-Yellow-Red per Medical Incident Report 8 Line
2. Contact Two Bears Air for hoist capable mission
3. Move patient to extraction point for extraction
4. If necessary, ground-transport patient off fire-line to airport in Plains Mt for intercept with LifeFlight

**Helicopter Landing Zones**

Landing Zone:	Coordinates:	Landing Zone:	Coordinates:
H-5/DP16 Zulu	Lat 47°36.338' Long 155°18.675'		
Plains Airport	Lat 47°47.4742' Long 114° 90.859'		

INCIDENT RADIO COMMUNICATIONS PLAN			Incident Name WEST LOLO COMPLEX			Date/Time Prepared 8/23/21			Operational Period Date/Time 8/25/21 0600 - 8/25/21 2000		
Ch #	Function	Channel Name/Trunked Radio System Talkgroup	Assignment	RX Freq	N or W	RX Tone/NAC	TX Freq	N or W	Tx Tone/NAC	Mode A, D or M	Remarks
1	TACTICAL CHNL	WEST DIR		172.3875		\$F7E	172.3875		\$4F9	D	UNASSIGNED
2	REPEATER	COUGAR		172.3875		\$F7E	164.1750		\$430	D	UNASSIGNED
3	REPEATER	CAMELS		172.3875		\$F7E	164.1750		\$455	D	UNASSIGNED
4	REPEATER	EDDY MT		172.3875		\$F7E	164.1750		\$526	D	UNASSIGNED
5	REPEATER	KEYSTONE		172.3875		\$F7E	164.1750		\$555	D	UNASSIGNED
6	REPEATER	LOOKOUT		172.3875		\$F7E	164.1750		\$5B6	D	UNASSIGNED
7	REPEATER	RICHARDS		172.3875		\$F7E	164.1750		\$68F	D	UNASSIGNED
8	REPEATER	STARK		170.6875		\$F7E	164.1000		\$40B	D	UNASSIGNED
9	REPEATER	PORTABLE		172.3875		\$F7E	164.1750		\$5EA	D	UNASSIGNED
10	TACTICAL CHNL	COMMON 1		163.7125			163.7125			A	UNASSIGNED
11	TACTICAL CHNL	COMMON 2		168.6125			168.6125			A	UNASSIGNED
12	TACTICAL CHNL	GYPPO LOGGER		151.9250			151.9250			A	UNASSIGNED
13	TACTICAL CHNL	MLA LOGGER		151.5050			151.5050		94.8	A	UNASSIGNED
14	RED	RED		154.0700			154.0700		156.7	A	MUTUAL AID
15	TAN	TAN		155.3400			155.3400		156.7	A	MED A/G PRI
16	AIR GUARD	AIR GUARD		168.6250			168.6250		110.9	A	AIR GUARD
Prepared by (Communications Unit) W LOLO COMMS 720-428-0546 / COML-T HERRING 505-328-3896						Incident Location LOLO NF, CONTROLLED UNCLASSIFIED INFORMATION//BASIC County State MT Latitude N Longitude W					

The convention calls for frequency lists to show four digits after the decimal place, followed by either an "N" or a "W", depending on whether the frequency is narrow or wide band. Mode refers to either "A" or "D" indicating analog or digital (e.g. Project 25) or "M" indicating mixed mode. All channels are shown as if programmed in a control station, mobile or portable radio. Repeater and base stations must be programmed with the Rx and Tx reversed.

## Finance Message

CTRs/Shift Ticket – Please send Shift tickets, CTRs, and General Messages for finance to the finance email below. You can take a photo of a signed hard copy shift ticket or CTR. Make sure your photos are legible and the supervisor signature is visible. Include your phone number in the comments in case we have questions.

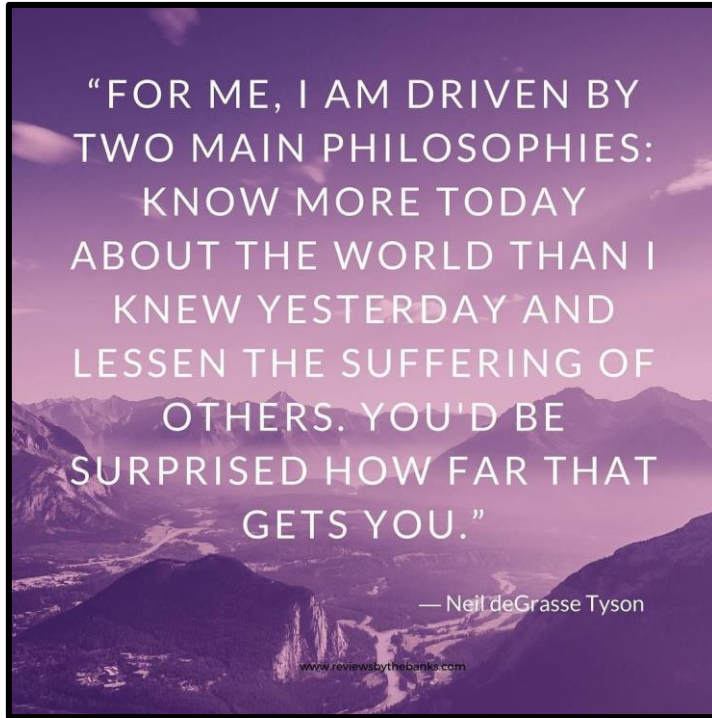
Please label all finance emails with your resource number.

[2021.westlolo.finance@firenet.gov](mailto:2021.westlolo.finance@firenet.gov)



# HUMAN RESOURCE MESSAGE

*There is zero tolerance for drugs or alcohol on this fire incident.*



Improving yourself and caring about others is good for your mental health and lifts your soul.

Be a positive example for others.

***It's not that hard!***

\*\*\*\*\*

Debby Hassel, HRSP (979) 255-5513

[hrspfire@gmail.com](mailto:hrspfire@gmail.com)

## Steps in the Demob process

- **If you are working virtually, FINALIZE your OF-288 and we will close you out in iSuite and report your release to Expanded.**
- If you are onsite overhead, try to close out virtually by following the process on the Finance Page.
- Return all accountable property to the Supply Unit, and/or Communications.
- Have equipment inspected at Ground Support and go through Weed Wash.
- Submit CTRs/Shift Tickets and FINALIZE your OF-288/OF-286, read Finance Procedure page for more instructions.
- Scan the QR code below to provide demob info if Driving. **We need you to provide your ETD/ETA, and RON city, if taking more than one day to drive home.**

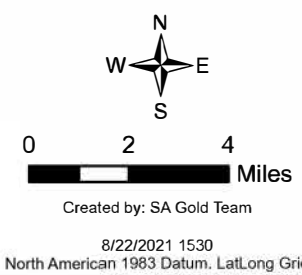
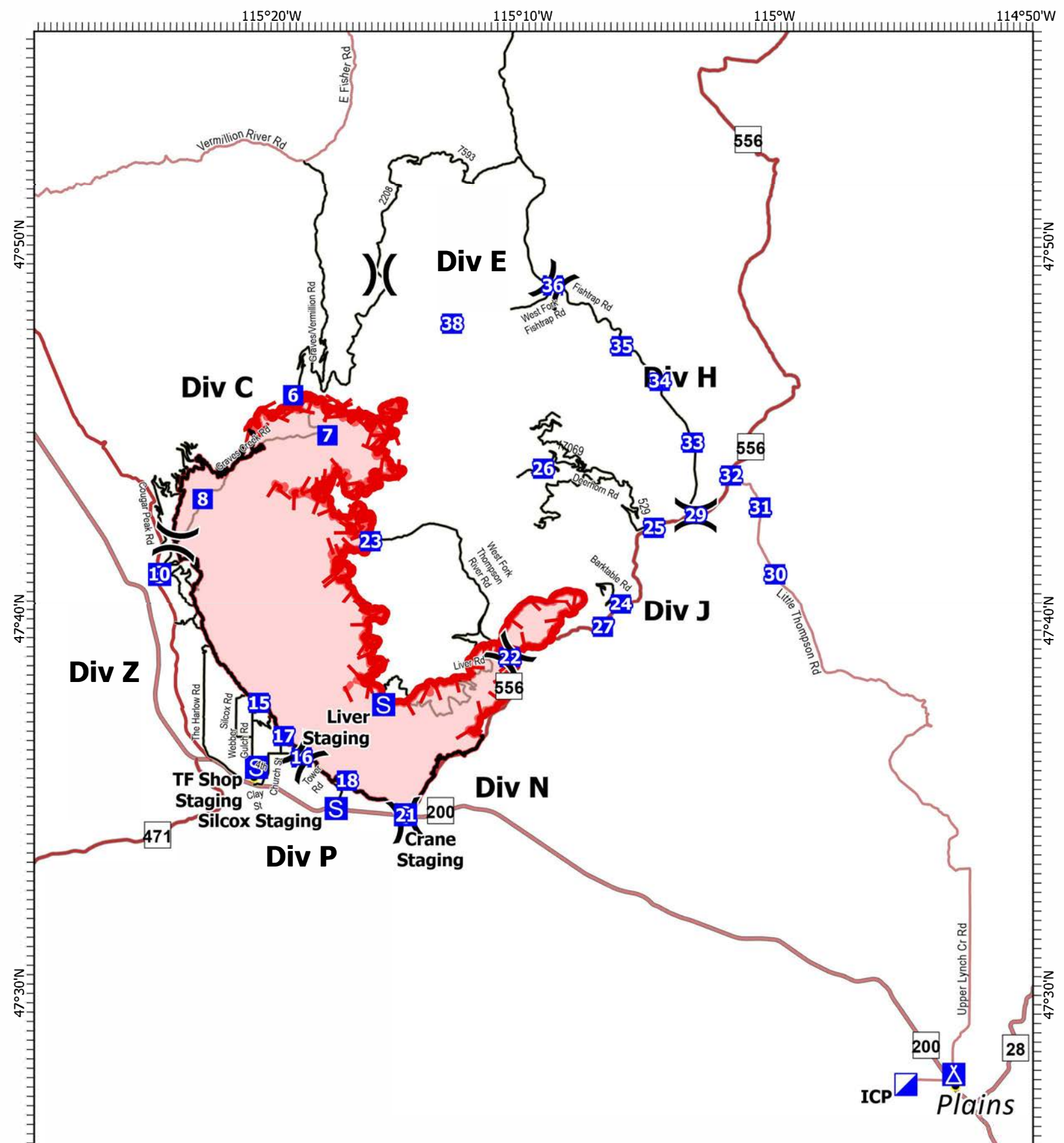
**Demob Contact:** Jeff DeMatteis, 720-441-8211

Email: [2021.westlolo.demob@firenet.gov](mailto:2021.westlolo.demob@firenet.gov)

QR Code for Driving







### IAP Map

West Lolo Complex  
MT-LNF-000893  
8/25/2021 Day

38688 acres at 8/17/21 @ 1600

- ▭ Wildfire Daily Fire Perimeter
- ▬ Fire Edge
- Contained Line

ICP ▬ ▬ Plains

### Gold Team Phone List

COMMAND			Chief	Thomas Barrett - v	478-550-6372
Deputy Incident Commander	Marty Bentley	423-584-1682	Chief (t)	Kelly Russell	850-294-8400
Liaison Officer	Michael Wright	970-819-2890	Resource Unit Leader	Aerin Land	305-432-6695
Liaison Officer (t)	Robert Claybrook	859-490-0653	Resource Unit Leader (t)	Jocelyn Howell	214-934-0138
Liaison Officer (t)	Jeffrey Gardner	706-260-6296	Status Check-In Recorder (t)	Paula Hensley	606-275-2140
Covid Coordinator (t)	Bradley Cooper	318-451-5074	Status Check-In Recorder (t)	Kenneth Parker	770-468-5459
Public Information Officer	Michelle Burnett	803-920-6167	Situation Unit Leader	Terry Bowerman	423-552-3323
Public Information Officer	Andrew Gray - v	850-797-4824	Situation Unit Leader (t)	Laila Lienesch	541-760-1484
Public Information Officer (t)	Cathryn Dowd -v	828-412-1521	Incident Technology Supt Splst	Kevin Curry - v	732-684-2999
Public Information Officer (t)	Emily Cleaver -v	931-436-0080	Incident Technology Supt Splst (t)	Joshua Skidmore	662-891-3533
Public Information Officer (t)	Brook Smith	865-603-5217	GIS Specialist	Ethan Robertson	912-512-3496
Public Information Officer (t)	Tricia Boles	606-627-5398	GIS Specialist (t)	Clayton Cooley	601-270-8562
Public Information Officer (t)	Ray Butler	865-250-8980	Fire Behavior Analyst	Kelly Cagle	336-302-0343
Public Information Officer (t)	Kari Hines	512-375-0354	Demobilization Unit Leader	Jeff DeMatteis	720-441-8211
Public Information Officer (t)	Ginelle Heller	404-782-9894	Training Specialist	Robbie Hollingsworth -v	601-300-1396
Safety Officer	Paul Churchill	843-259-9884	<b>LOGISTICS</b>		
Safety Officer	Shawn Dugger	850-508-7736	Chief	Cameron Crisp	304-635-2035
Safety Officer	Larry Holsomback	706-280-4716	Chief	Thomas Philipps	936-404-8451
Safety Officer (t)	Jeffery Henderson	479-518-3162	Chief (t)	Carl Bauer	719-431-2905
<b>OPERATIONS</b>			Chief (t)	Mark Eaton	850-570-9091
Chief	Jeffrey Schardt	706 280-5498	Supply Unit Leader	Lemuel Cooksey	850-508-9097
Chief	Shawn Nagle	662-231-4024	Communications Unit Leader	George Rosenthal	936-707-1832
Chief	Loy Elam	336-467-7254	Communications Unit Leader (t)	Shannon Herring	470-201-9582
Chief Field	Josh Graham	501-545-3088	Ordering Manager	Leigh Ostin	352-445-1366
Chief	C Bertram Plante	252-475-4662	Ground Support Unit Leader	Todd Waller	501-337-6308
Chief (t)	Kevin Grodi	321-408-2728	Ground Support Unit Leader	Willard Stanley	850-635-1035
Chief (t) Field	Matthew Johnson	870-415-0185	Equipment Manager	Lanton Chumley	936-635-3720
DIVS	Greg Salansky	865-414-6461	Equipment Manager (t)	Brian Truss	936-5464338
DIVS	Jason Klawinsky	936-520-8827	Medical Unit Leader	Jeff Cummings	317-730-6653
DIVS	Heath Thomas	479-667-2191	Medical Unit Leader	Jeff Hatch	435-414-3521
DIVS	Jared Nobles	352-625-2520	Medical Unit Leader (t)	Sherri McDougal	715-783-0075
DIVS	Daniel Gore	478-456-8516	Facilities Unit Leader (t)	John Dunlap	850-545-8573
DIVS (t)	Matthew Moe	928-220-0043	Receiving/Distribution Manager	Vince Mullins	850-694-8680
DIVS (t)	Brenton Holt	870-715-0402	Receiving/Distribution Manager (t)	Randall Hamilton	606-864-4163
DIVS (t)	Matt Hundt	775-340-2991	Security Manager	Joshua Hindman	509-366-8975
<b>AIR OPERATIONS</b>			<b>FINANCE</b>		
Air Operations Branch Dir	Larry Trapp	307-320-6566	Chief	Jason Gillis	912-314-9233
<b>PLANNING</b>			Chief (t)	Laura Wilson	765-427-7564
Chief	Jessica Hollingsworth	601-966-0331	Cost Unit Leader	Tom Steele	770-363-3583
Chief	Carol O'Bryan	903-263-8704	Cost Unit Leader (t)	Stacey Eaton	850-375-9464
			Comps/Claims	Terri McDonald -v	352-454-5385
			Time	Donna Bentley	706-474-3216



# MEDICAL PLAN (ICS 206 WF)

Controlled Unclassified Information//Basic

## Medical Incident Report

**FOR A NON-EMERGENCY INCIDENT, WORK THROUGH CHAIN OF COMMAND TO REPORT AND TRANSPORT INJURED PERSONNEL AS NECESSARY.**

**FOR A MEDICAL EMERGENCY: IDENTIFY ON SCENE INCIDENT COMMANDER BY NAME AND POSITION AND ANNOUNCE "MEDICAL EMERGENCY" TO INITIATE RESPONSE FROM IMT COMMUNICATIONS/DISPATCH.**

Use the following items to communicate situation to communications/dispatch.

1. CONTACT COMMUNICATIONS / DISPATCH (**Verify correct frequency prior to starting report**)

*Ex: "Communications, Div. Alpha. Stand-by for Emergency Traffic."*

2. INCIDENT STATUS: *Provide incident summary (including number of patients) and command structure.*

*Ex: "Communications, I have a Red priority patient, unconscious, struck by a falling tree. Requesting air ambulance to Forest Road 1 at (Lat./Long.) This will be the Trout Meadow Medical, IC is TFLD Jones. EMT Smith is providing medical care."*

Severity of Emergency / Transport Priority	<input type="checkbox"/> RED / PRIORITY 1 Life or limb threatening injury or illness. Evacuation need is IMMEDIATE <i>Ex: Unconscious, difficulty breathing, bleeding severely, 2° – 3° burns more than 4 palm sizes, heat stroke, disoriented.</i> <input type="checkbox"/> YELLOW / PRIORITY 2 Serious Injury or illness. Evacuation may be DELAYED if necessary. <i>Ex: Significant trauma, unable to walk, 2° – 3° burns not more than 1-3 palm sizes.</i> <input type="checkbox"/> GREEN / PRIORITY 3 Minor Injury or illness. Non-Emergency transport <i>Ex: Sprains, strains, minor heat-related illness.</i>	
Nature of Injury or Illness & Mechanism of Injury		<i>Brief Summary of Injury or Illness (Ex: Unconscious, Struck by Falling Tree)</i>
Transport Request		<i>Air Ambulance / Short Haul/Hoist Ground Ambulance / Other</i>
Patient Location		<i>Descriptive Location &amp; Lat. / Long. (WGS84)</i>
Incident Name		<i>Geographic Name + "Medical" (Ex: Trout Meadow Medical)</i>
On-Scene Incident Commander		<i>Name of on-scene IC of Incident within an Incident (Ex: TFLD Jones)</i>
Patient Care		<i>Name of Care Provider (Ex: EMT Smith)</i>

3. INITIAL PATIENT ASSESSMENT: *Complete this section for each patient as applicable (start with the most severe patient)*

Patient Assessment: See IRPG page 106

Treatment:

4. TRANSPORT PLAN:

Evacuation Location (if different): *(Descriptive Location (drop point, intersection, etc.) or Lat. / Long.)* Patient's ETA to Evacuation Location:

Helispot / Extraction Site Size and Hazards:

5. ADDITIONAL RESOURCES / EQUIPMENT NEEDS:

*Example: Paramedic/EMT, Crews, Immobilization Devices, AED, Oxygen, Trauma Bag, IV/Fluid(s), Splints, Rope rescue, Wheeled litter, HAZMAT, Extrication*

6. COMMUNICATIONS: Identify State Air/Ground EMS Frequencies and Hospital Contacts as applicable

Function	Channel Name/Number	Receive (RX)	Tone/NAC *	Transmit (TX)	Tone/NAC *
COMMAND					
AIR-TO-GRND					
TACTICAL					

7. CONTINGENCY: **Considerations:** *If primary options fail, what actions can be implemented in conjunction with primary evacuation method? Be thinking ahead.*

8. ADDITIONAL INFORMATION: *Updates/Changes, etc.*

**REMEMBER:** Confirm ETA's of resources ordered. Act according to your level of training. Be Alert. Keep Calm. Think Clearly. Act Decisively.