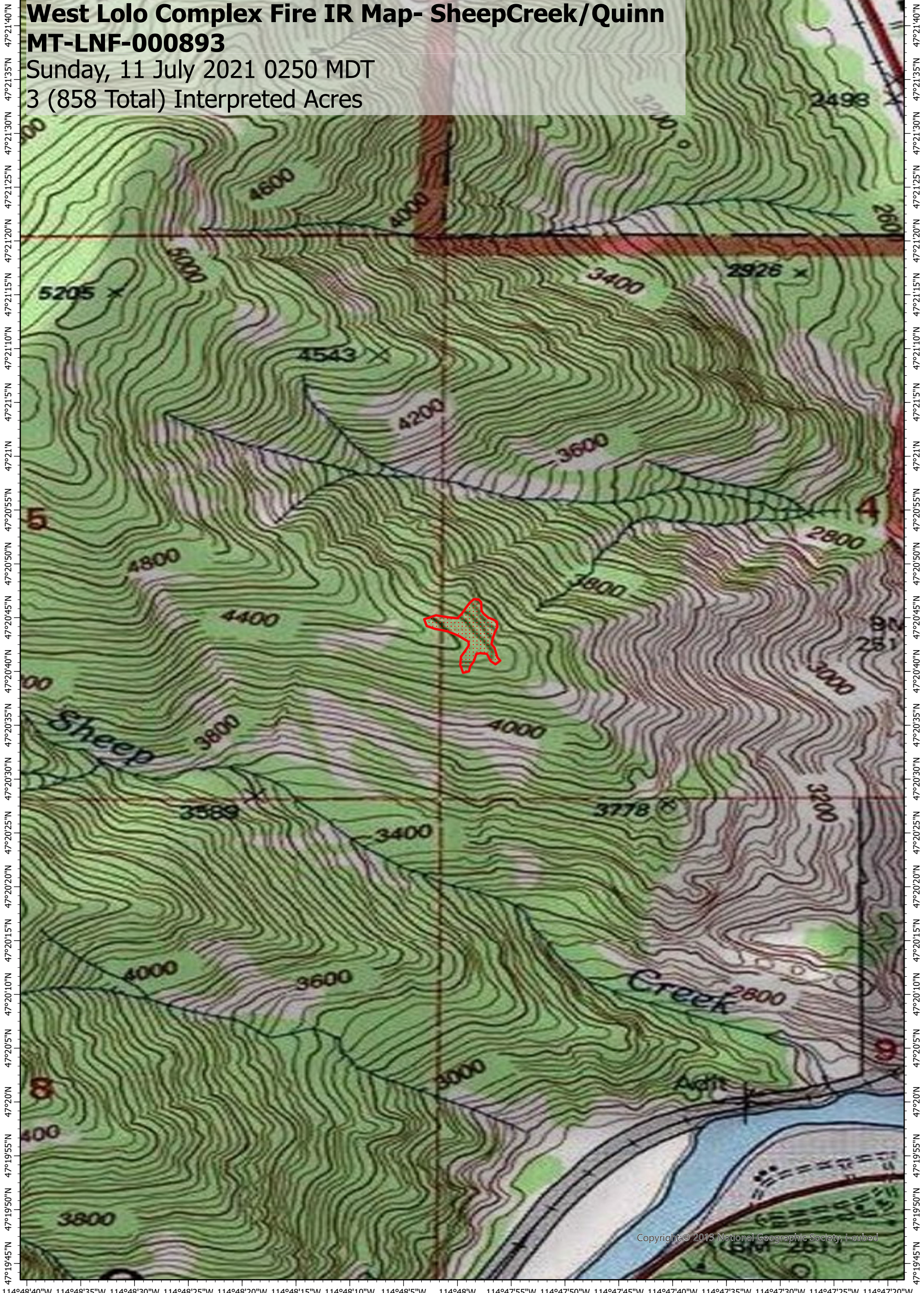




114°48'40"W 114°48'35"W 114°48'30"W 114°48'25"W 114°48'20"W 114°48'15"W 114°48'10"W 114°48'5"W 114°48'W 114°47'55"W 114°47'50"W 114°47'45"W 114°47'40"W 114°47'35"W 114°47'30"W 114°47'25"W 114°47'20"W



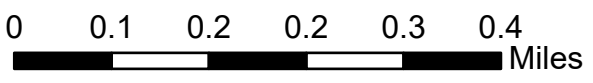
**West Lolo Complex Fire IR Map- SheepCreek/Quinn**  
**MT-LNF-000893**  
 Sunday, 11 July 2021 0250 MDT  
 3 (858 Total) Interpreted Acres

114°48'40"W 114°48'35"W 114°48'30"W 114°48'25"W 114°48'20"W 114°48'15"W 114°48'10"W 114°48'5"W 114°48'W 114°47'55"W 114°47'50"W 114°47'45"W 114°47'40"W 114°47'35"W 114°47'30"W 114°47'25"W 114°47'20"W

**Legend**

-  Scattered Heat
-  Burn Perimeter

Scale: 1:10,000  
 Projection: WGS 1984  
 Produced by: Owyhee Air Research, LLC  
 IR Interpreter: D. Merriman  
 Contact: fire@owyheear.com (208) 442-5405



Copyright © 2013 National Geographic Society, Inc.