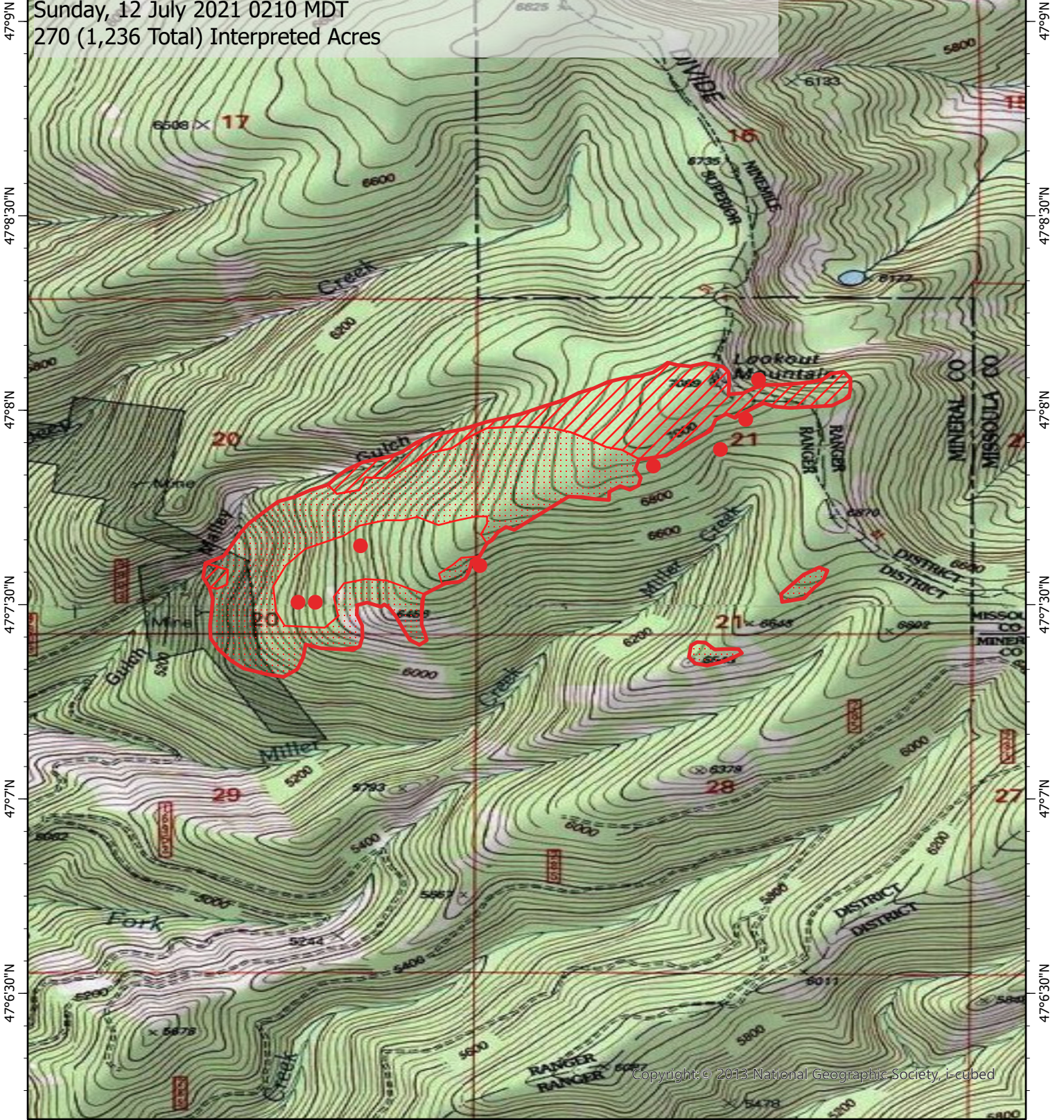


114°40'W 114°39'30"W 114°39'W 114°38'30"W 114°38'W

# West Lolo Complex Fire IR Map- Deep Mountain Lookout MT-LNF-000893

Sunday, 12 July 2021 0210 MDT  
270 (1,236 Total) Interpreted Acres



Copyright © 2013 National Geographic Society, i-cubed

114°40'W 114°39'30"W 114°39'W 114°38'30"W 114°38'W

### Legend

- Isolated Heat
- Burn Perimeter
- Intense Heat
- Scattered Heat

Scale: 1:25,000  
 Projection: WGS 1984  
 Produced by: Owyhee Air Research, LLC  
 IR Interpreter: C. Merriman  
 Contact: fire@owyheear.com (208) 442-5405

