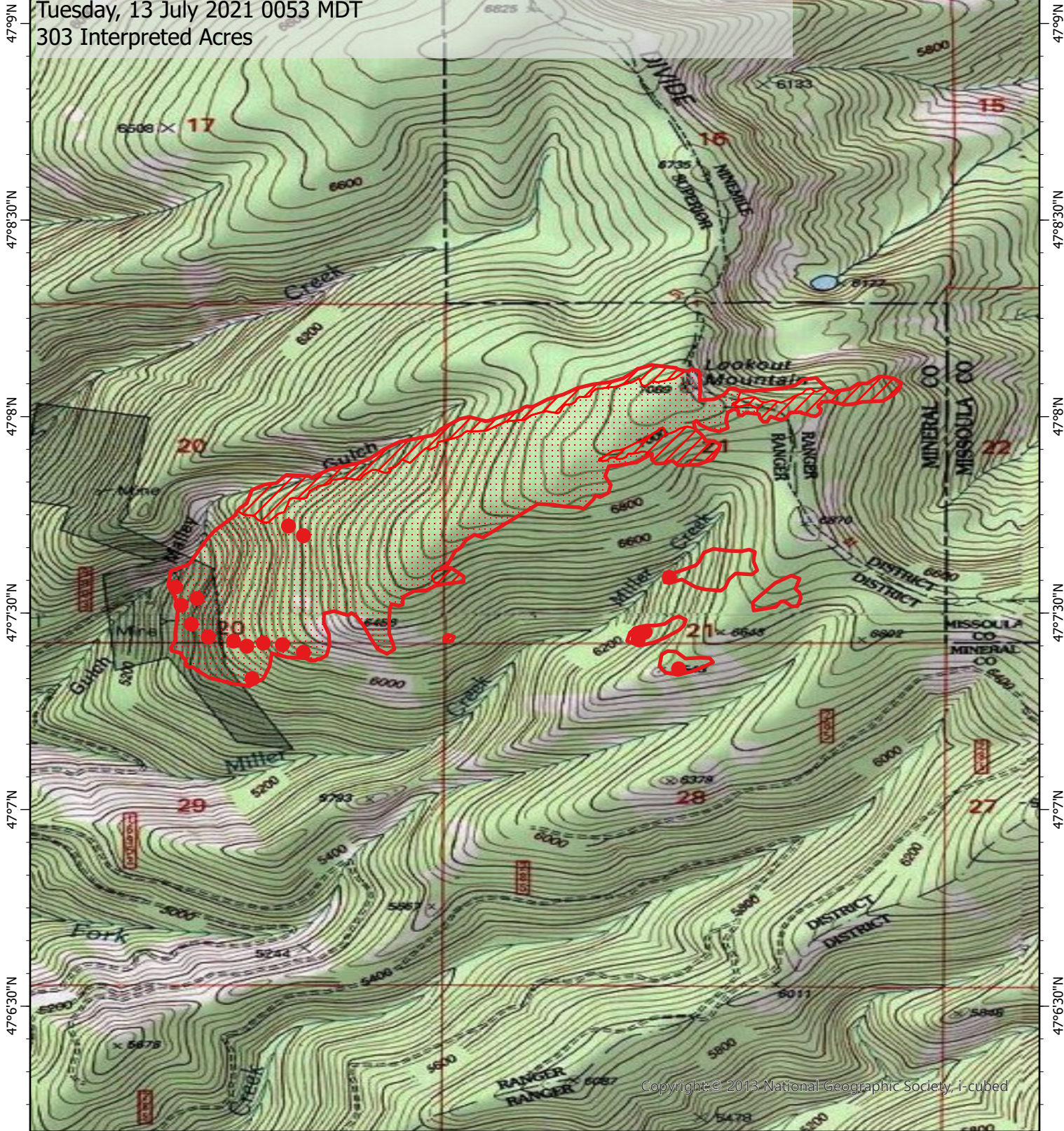


114°40'W 114°39'30"W 114°39'W 114°38'30"W 114°38'W

West Lolo Complex Fire IR Map- Deep Lookout Mountain

MT-LNF-000893

Tuesday, 13 July 2021 0053 MDT
303 Interpreted Acres



Copyright © 2013 National Geographic Society, i-cubed

114°40'W 114°39'30"W 114°39'W 114°38'30"W 114°38'W

- Legend**
- Isolated Heat
 - Burn Perimeter
 - Intense Heat
 - Scattered Heat

Scale: 1:25,000
 Projection: WGS 1984
 Produced by: Owyhee Air Research, LLC
 IR Interpreter: D. Merriman
 Contact: fire@owyheear.com (208) 442-5405

