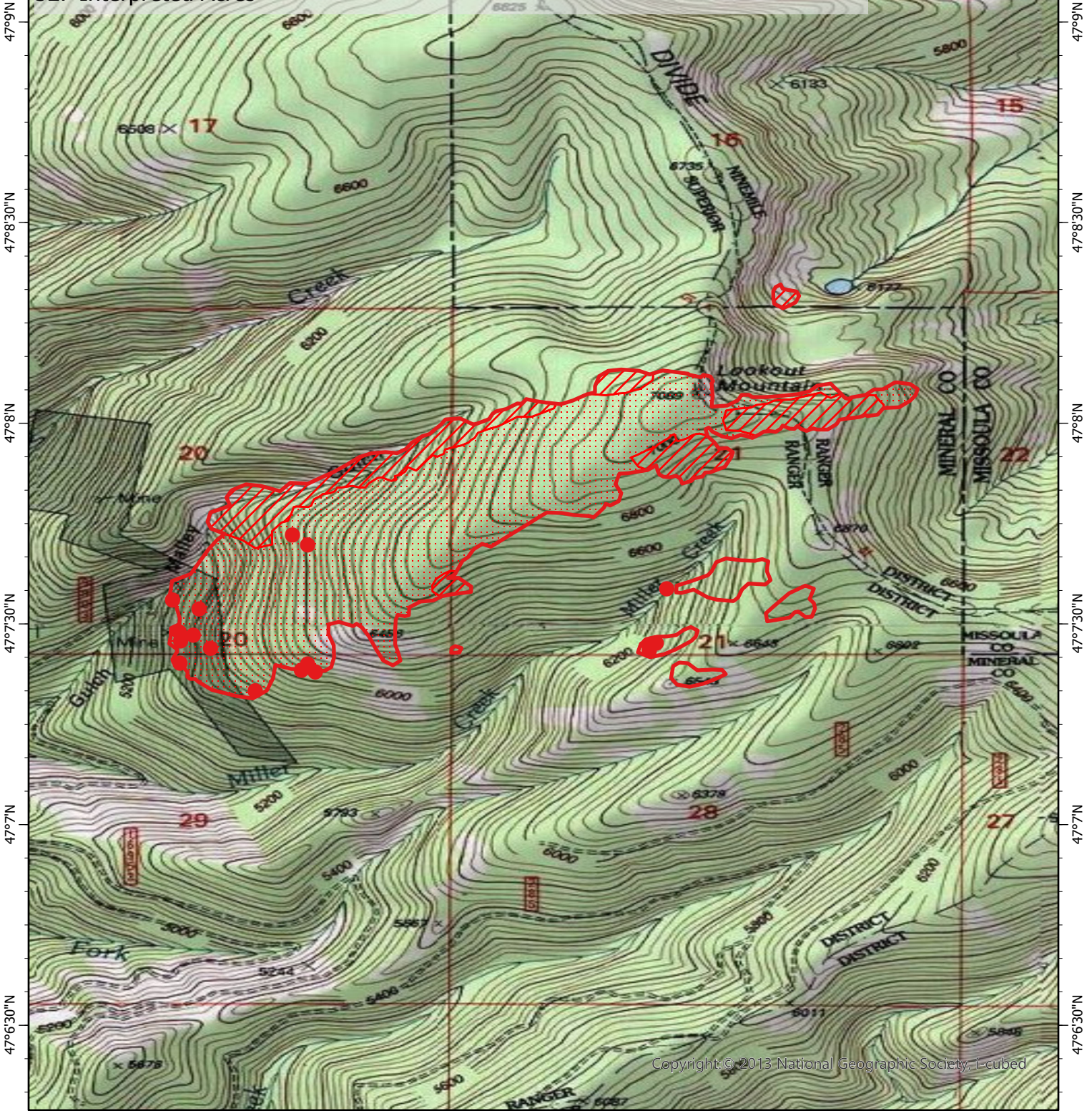


114°40'W 114°39'30"W 114°39'W 114°38'30"W 114°38'W

# West Lolo Complex Fire IR Map- Deep Lookout Mountain

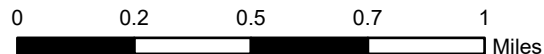
MT-LNF-000893  
Wednesday, 14 July 2021 0030 MDT  
327 Interpreted Acres



114°40'W 114°39'30"W 114°39'W 114°38'30"W 114°38'W

- Legend**
- Isolated Heat
  - Burn Perimeter
  - Intense Heat
  - Scattered Heat

Scale: 1:25,000  
 Projection: WGS 1984  
 Produced by: Owyhee Air Research, LLC  
 IR Interpreter: D. Merriman  
 Contact: fire@owyheear.com (208) 442-5405



Copyright © 2013 National Geographic Society, I-cubed