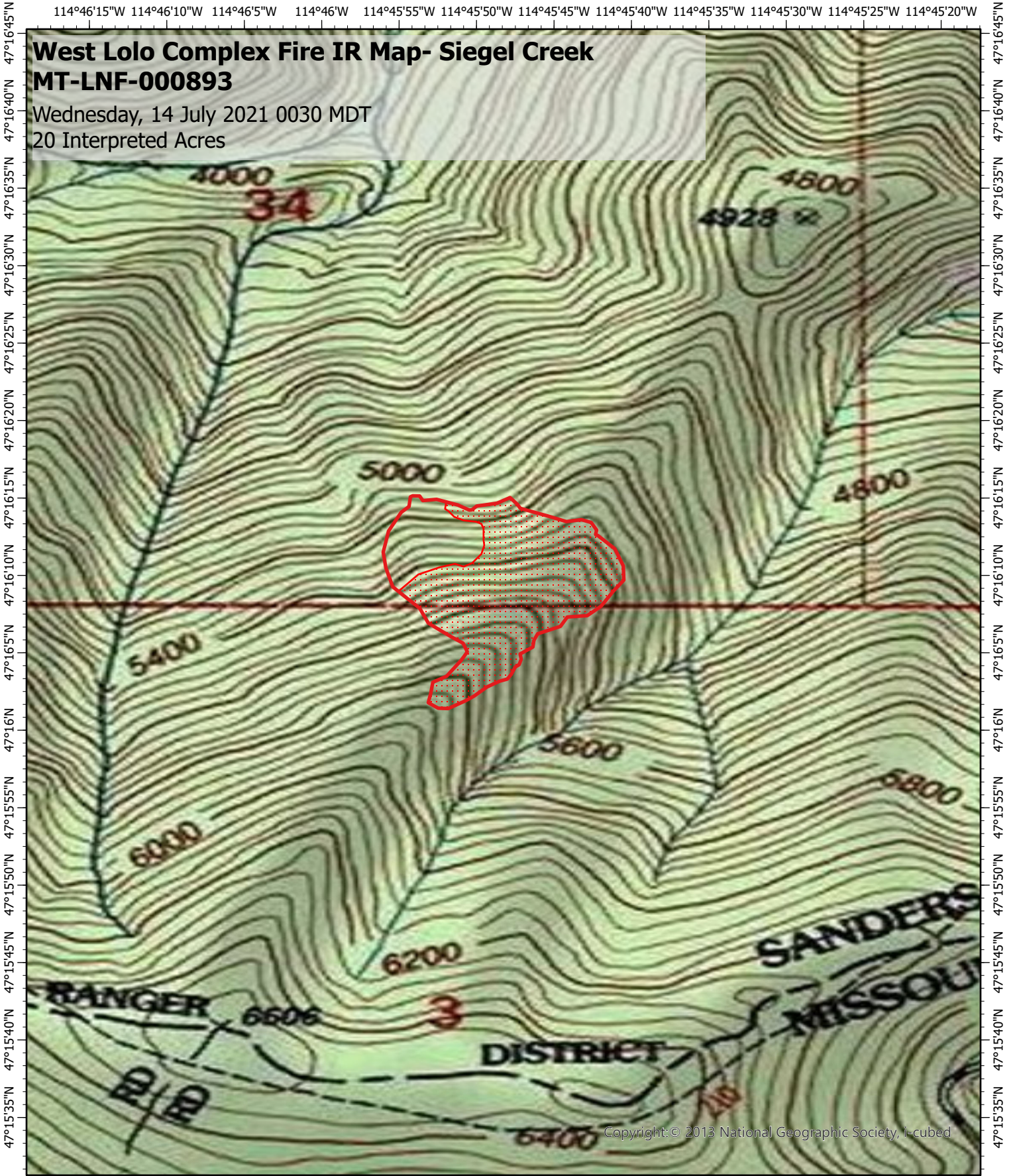


114°46'15"W 114°46'10"W 114°46'5"W 114°46"W 114°45'55"W 114°45'50"W 114°45'45"W 114°45'40"W 114°45'35"W 114°45'30"W 114°45'25"W 114°45'20"W

# West Lolo Complex Fire IR Map- Siegel Creek MT-LNF-000893

Wednesday, 14 July 2021 0030 MDT  
20 Interpreted Acres





47°16'45"N  
47°16'40"N  
47°16'35"N  
47°16'30"N  
47°16'25"N  
47°16'20"N  
47°16'15"N  
47°16'10"N  
47°16'05"N  
47°16'00"N  
47°15'55"N  
47°15'50"N  
47°15'45"N  
47°15'40"N  
47°15'35"N

47°16'45"N  
47°16'40"N  
47°16'35"N  
47°16'30"N  
47°16'25"N  
47°16'20"N  
47°16'15"N  
47°16'10"N  
47°16'05"N  
47°16'00"N  
47°15'55"N  
47°15'50"N  
47°15'45"N  
47°15'40"N  
47°15'35"N

Copyright: © 2013 National Geographic Society, i-cubed

114°46'15"W 114°46'10"W 114°46'5"W 114°46"W 114°45'55"W 114°45'50"W 114°45'45"W 114°45'40"W 114°45'35"W 114°45'30"W 114°45'25"W 114°45'20"W

- Legend**
-  Burn Perimeter
  -  Scattered Heat

Scale: 1:10,000  
 Projection: WGS 1984  
 Produced by: Owyhee Air Research, LLC  
 IR Interpreter: D. Merriman  
 Contact: fire@owyheear.com (208) 442-5405

