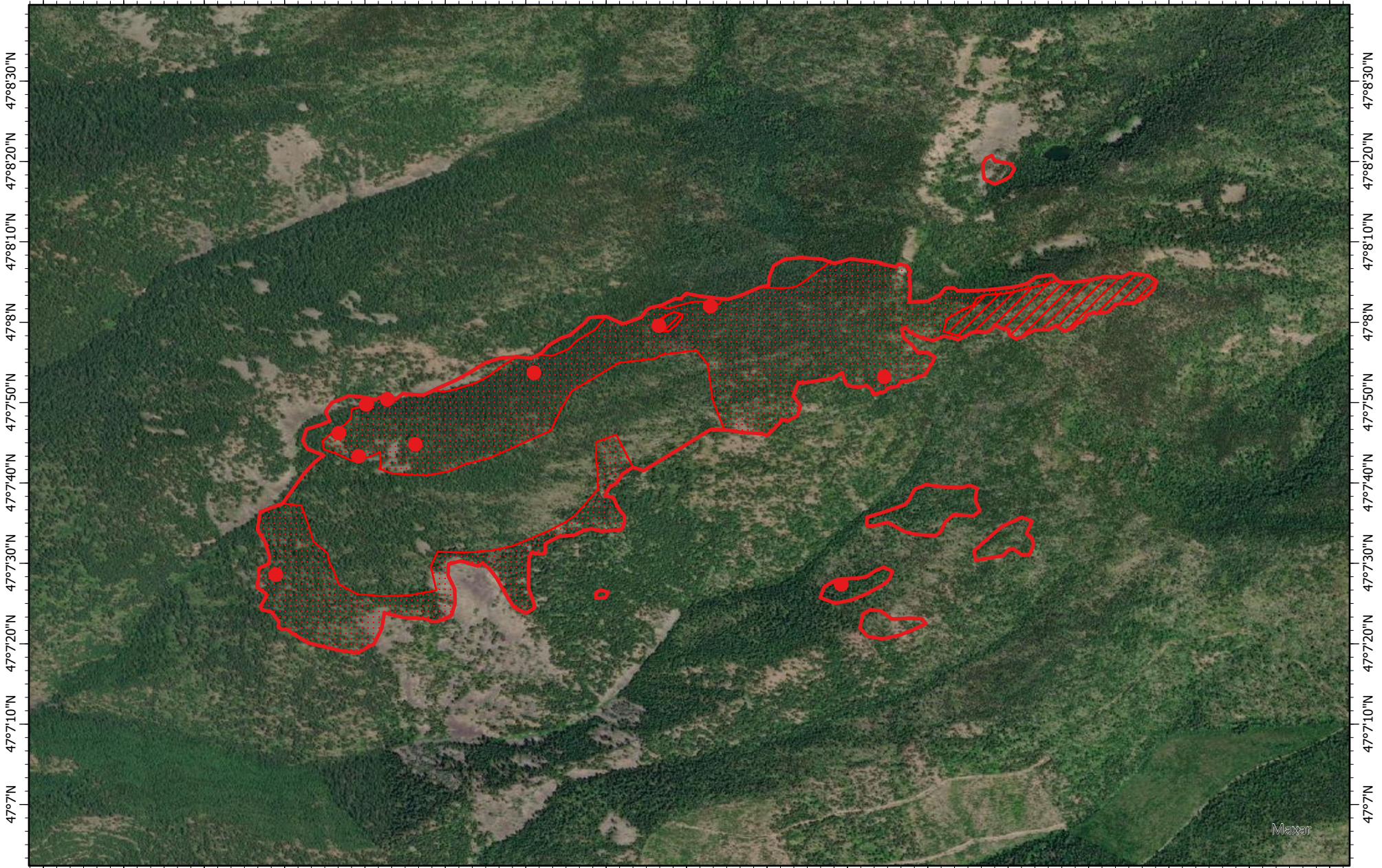


114°40'10"W 114°40'W 114°39'50"W 114°39'40"W 114°39'30"W 114°39'20"W 114°39'10"W 114°39'W 114°38'50"W 114°38'40"W 114°38'30"W 114°38'20"W 114°38'10"W 114°38'W 114°37'50"W 114°37'40"W 114°37'30"W







114°40'10"W 114°40'W 114°39'50"W 114°39'40"W 114°39'30"W 114°39'20"W 114°39'10"W 114°39'W 114°38'50"W 114°38'40"W 114°38'30"W 114°38'20"W 114°38'10"W 114°38'W 114°37'50"W 114°37'40"W 114°37'30"W

**West Lolo Complex Fire IR Map-  
Deep Lookout Mountain  
MT-LNF-000893**

Wednesday, 14 July 2021 2210 MDT  
327 Interpreted Acres

Scale: 1:20,000  
Projection: WGS 1984  
Produced by: Owyhee Air Research, LLC  
IR Interpreter: D. Merriman  
Contact: fire@owyheeair.com (208) 442-5405

- Legend
-  Isolated Heat
  -  Burn Perimeter
  -  Intense Heat
  -  Scattered Heat

