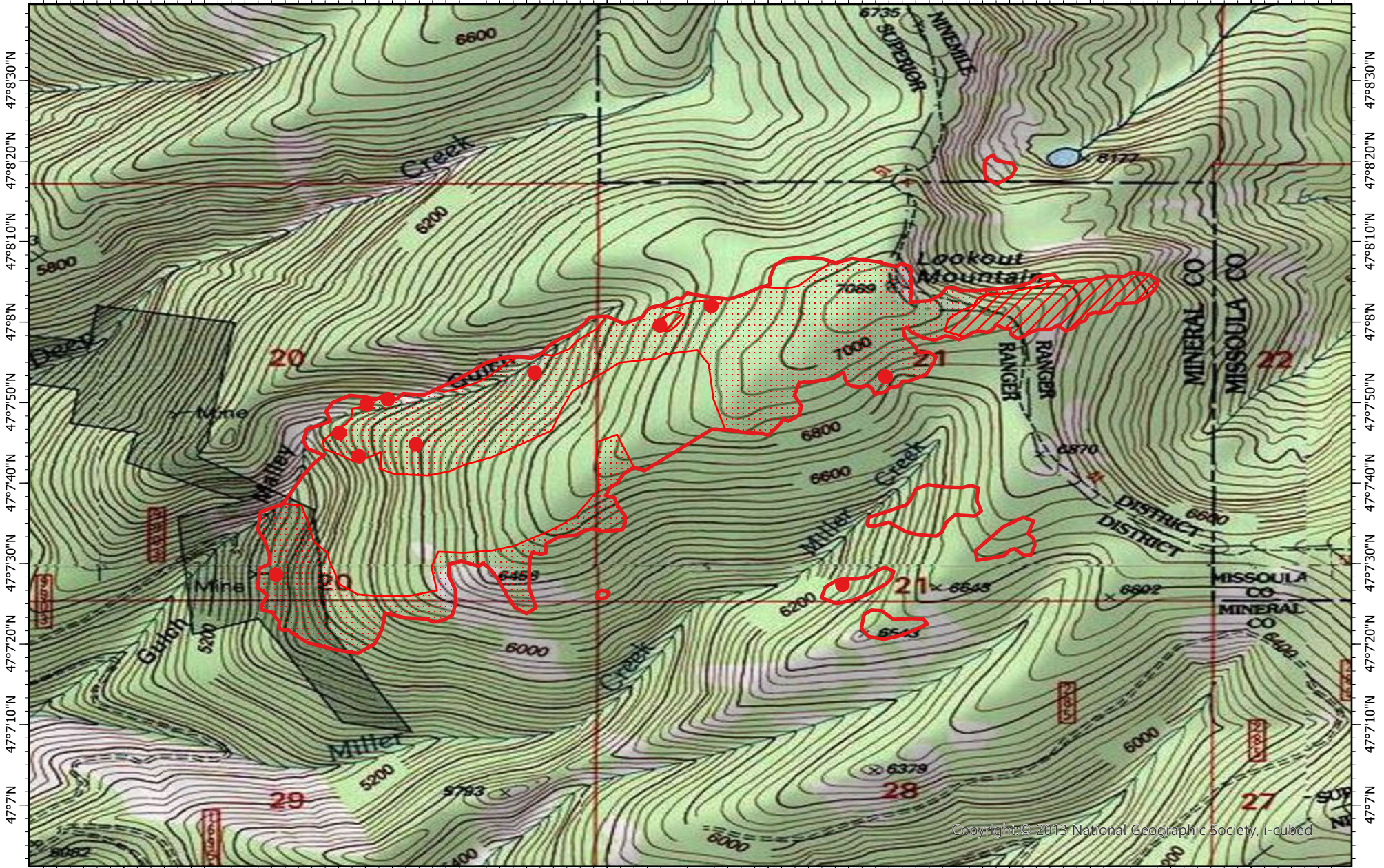


114°40'10"W 114°40'W 114°39'50"W 114°39'40"W 114°39'30"W 114°39'20"W 114°39'10"W 114°39'W 114°38'50"W 114°38'40"W 114°38'30"W 114°38'20"W 114°38'10"W 114°38'W 114°37'50"W 114°37'40"W 114°37'30"W



Copyright © 2013 National Geographic Society, i-cubed

114°40'10"W 114°40'W 114°39'50"W 114°39'40"W 114°39'30"W 114°39'20"W 114°39'10"W 114°39'W 114°38'50"W 114°38'40"W 114°38'30"W 114°38'20"W 114°38'10"W 114°38'W 114°37'50"W 114°37'40"W 114°37'30"W

**West Lolo Complex Fire IR Map-
Deep Lookout Mountain
MT-LNF-000893**

Wednesday, 14 July 2021 2210 MDT
327 Interpreted Acres

Scale: 1:20,000
Projection: WGS 1984
Produced by: Owyhee Air Research, LLC
IR Interpreter: D. Merriman
Contact: fire@owyheear.com (208) 442-5405

- Legend
- Isolated Heat
 - Burn Perimeter
 - ▨ Intense Heat
 - ▤ Scattered Heat

