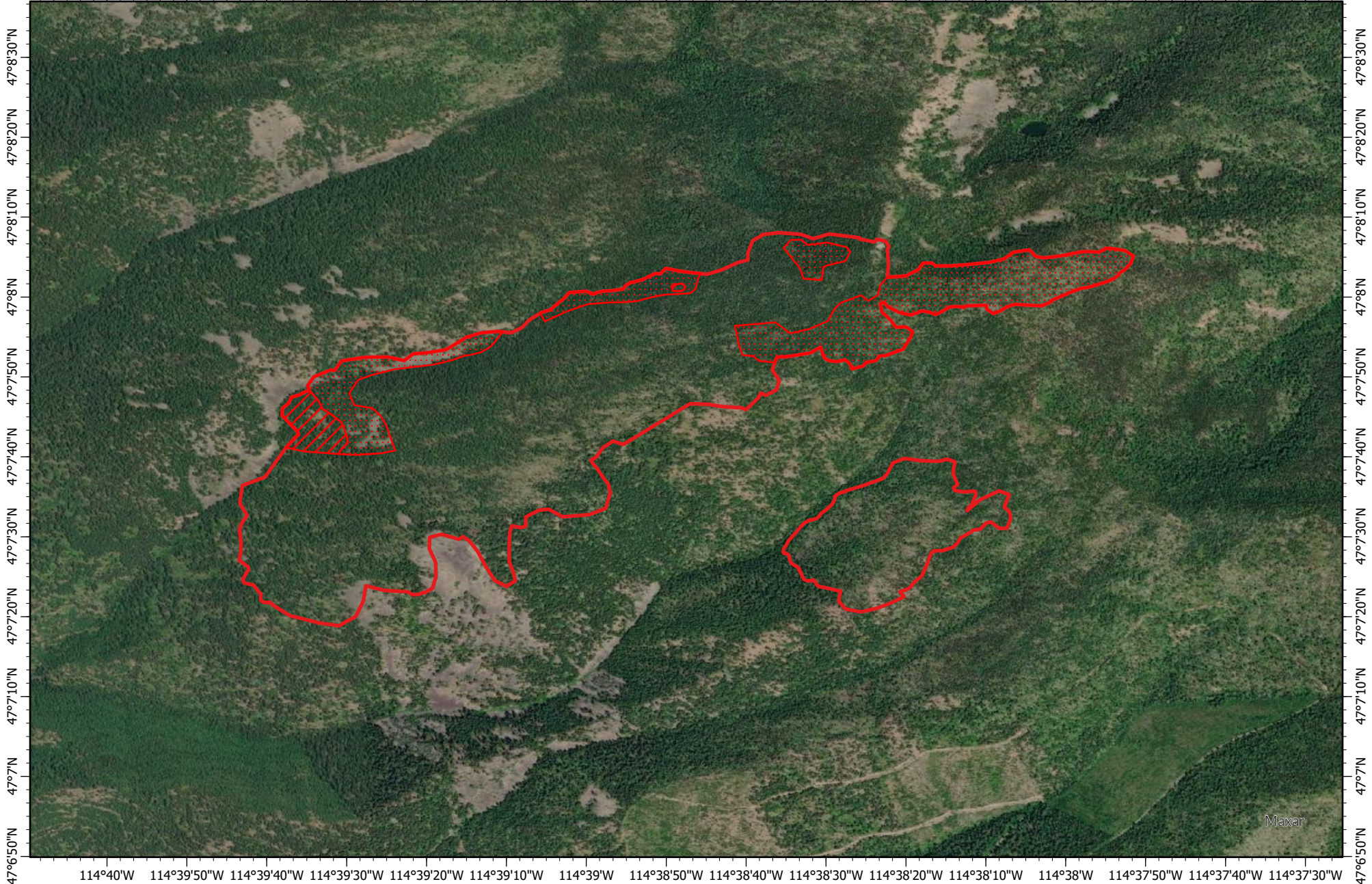


114°40'W 114°39'50"W 114°39'40"W 114°39'30"W 114°39'20"W 114°39'10"W 114°39'W 114°38'50"W 114°38'40"W 114°38'30"W 114°38'20"W 114°38'10"W 114°38'W 114°37'50"W 114°37'40"W 114°37'30"W



47°6'50"N
47°7'N
47°7'10"N
47°7'20"N
47°7'30"N
47°7'40"N
47°7'50"N
47°8'N
47°8'10"N
47°8'20"N
47°8'30"N




47°6'50"N
47°7'N
47°7'10"N
47°7'20"N
47°7'30"N
47°7'40"N
47°7'50"N
47°8'N
47°8'10"N
47°8'20"N
47°8'30"N

114°40'W 114°39'50"W 114°39'40"W 114°39'30"W 114°39'20"W 114°39'10"W 114°39'W 114°38'50"W 114°38'40"W 114°38'30"W 114°38'20"W 114°38'10"W 114°38'W 114°37'50"W 114°37'40"W 114°37'30"W

West Lolo Complex Fire IR Map-
Deep Lookout Mountain
MT-LNF-000893
 Friday, 16 July 2021 2245 MDT
 365 Interpreted Acres

Scale: 1:20,000
 Projection: WGS 1984
 Produced by: Owyhee Air Research, LLC
 IR Interpreter: E. Trout
 Contact: fire@owyheeair.com (208) 442-5405

Legend

-  Intense Heat
-  Scattered Heat
-  Burn Perimeter

