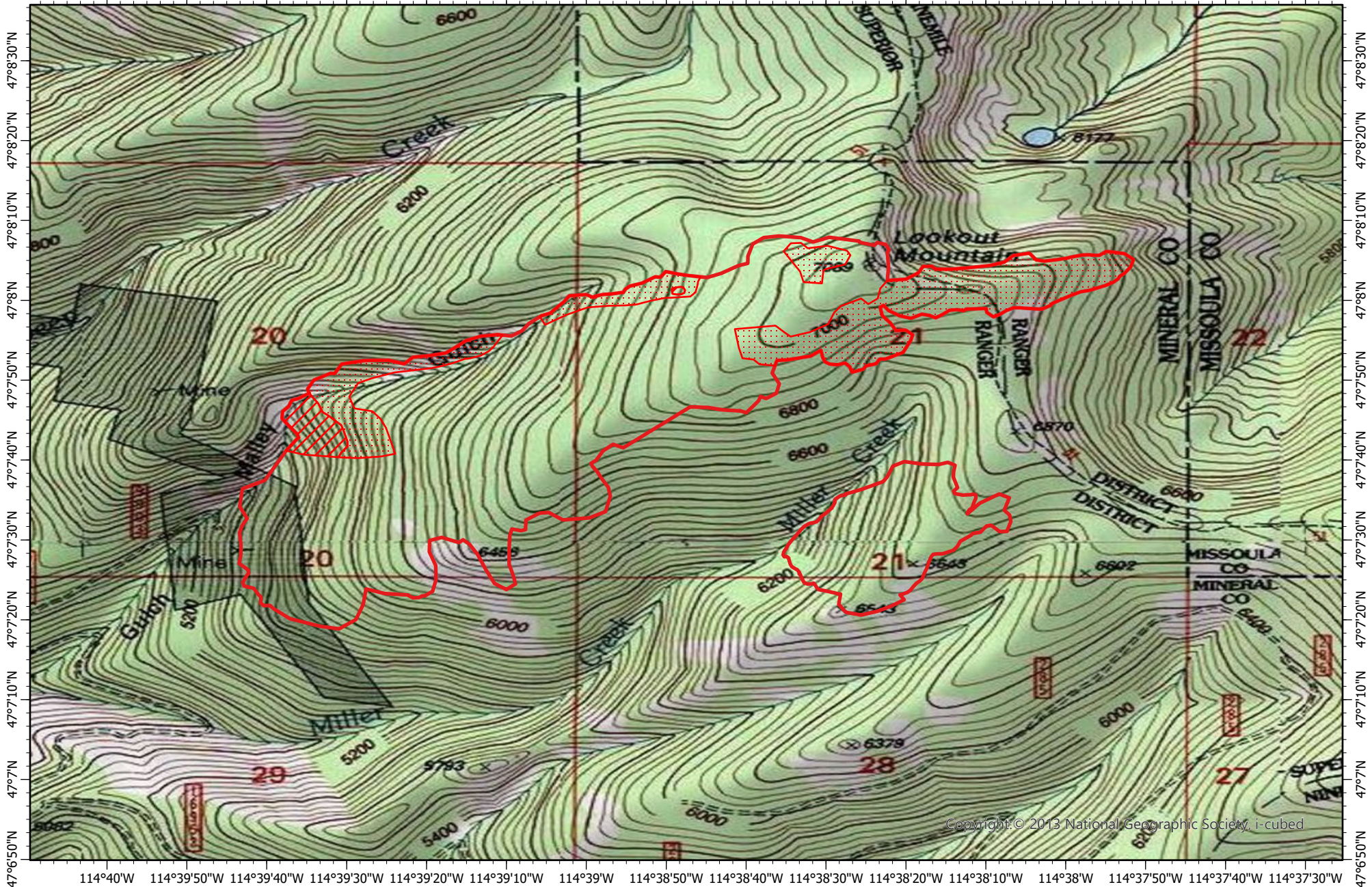


114°40'W 114°39'50"W 114°39'40"W 114°39'30"W 114°39'20"W 114°39'10"W 114°39'W 114°38'50"W 114°38'40"W 114°38'30"W 114°38'20"W 114°38'10"W 114°38'W 114°37'50"W 114°37'40"W 114°37'30"W



47°8'30"N  
47°8'20"N  
47°8'10"N  
47°8'  
47°7'50"N  
47°7'40"N  
47°7'30"N  
47°7'20"N  
47°7'10"N  
47°7'  
47°6'50"N




47°8'30"N  
47°8'20"N  
47°8'10"N  
47°8'  
47°7'50"N  
47°7'40"N  
47°7'30"N  
47°7'20"N  
47°7'10"N  
47°7'  
47°6'50"N

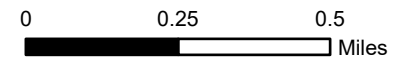
114°40'W 114°39'50"W 114°39'40"W 114°39'30"W 114°39'20"W 114°39'10"W 114°39'W 114°38'50"W 114°38'40"W 114°38'30"W 114°38'20"W 114°38'10"W 114°38'W 114°37'50"W 114°37'40"W 114°37'30"W

**West Lolo Complex Fire IR Map-**  
**Deep Lookout Mountain**  
**MT-LNF-000893**  
 Friday, 16 July 2021 2245 MDT  
 365 Interpreted Acres

Scale: 1:20,000  
 Projection: WGS 1984  
 Produced by: Owyhee Air Research, LLC  
 IR Interpreter: E. Trout  
 Contact: fire@owyheear.com (208) 442-5405

**Legend**

-  Intense Heat
-  Scattered Heat
-  Burn Perimeter



Copyright © 2013 National Geographic Society, i-cubed