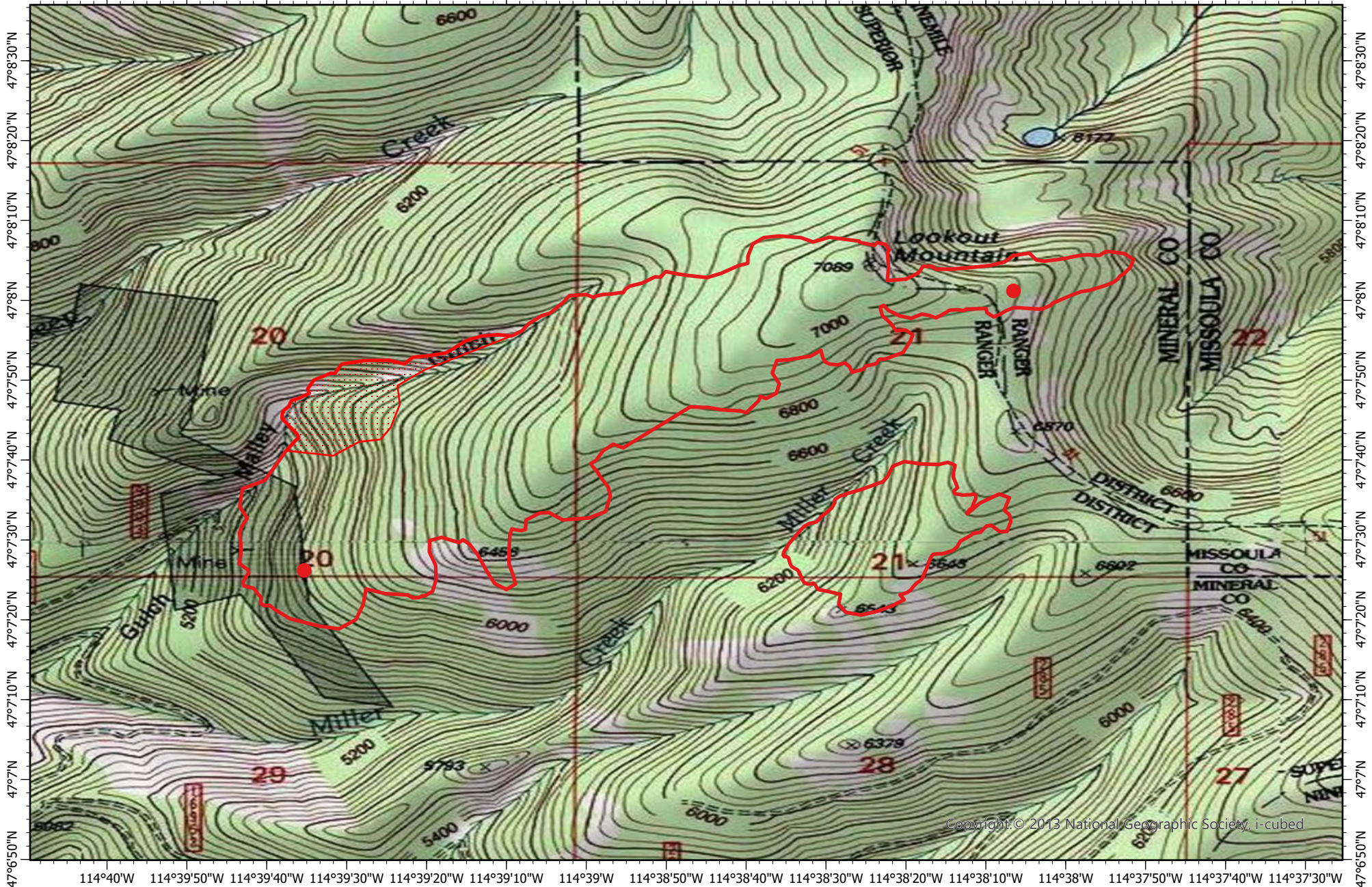


114°40'W 114°39'50"W 114°39'40"W 114°39'30"W 114°39'20"W 114°39'10"W 114°39'W 114°38'50"W 114°38'40"W 114°38'30"W 114°38'20"W 114°38'10"W 114°38'W 114°37'50"W 114°37'40"W 114°37'30"W



Copyright © 2013 National Geographic Society, i-cubed

114°40'W 114°39'50"W 114°39'40"W 114°39'30"W 114°39'20"W 114°39'10"W 114°39'W 114°38'50"W 114°38'40"W 114°38'30"W 114°38'20"W 114°38'10"W 114°38'W 114°37'50"W 114°37'40"W 114°37'30"W 114°37'20"W 114°37'10"W 114°37'W 114°36'50"W

**West Lolo Complex Fire IR Map-  
Deep Lookout Mountain**  
**MT-LNF-000893**  
 Sunday, 18 July 2021 0145 MDT  
 365 Interpreted Acres

Scale: 1:20,000  
 Projection: WGS 1984  
 Produced by: Owyhee Air Research, LLC  
 IR Interpreter: E. Trout  
 Contact: fire@owyheear.com (208) 442-5405

**Legend**

- Isolated Heat
- Scattered Heat
- Burn Perimeter

