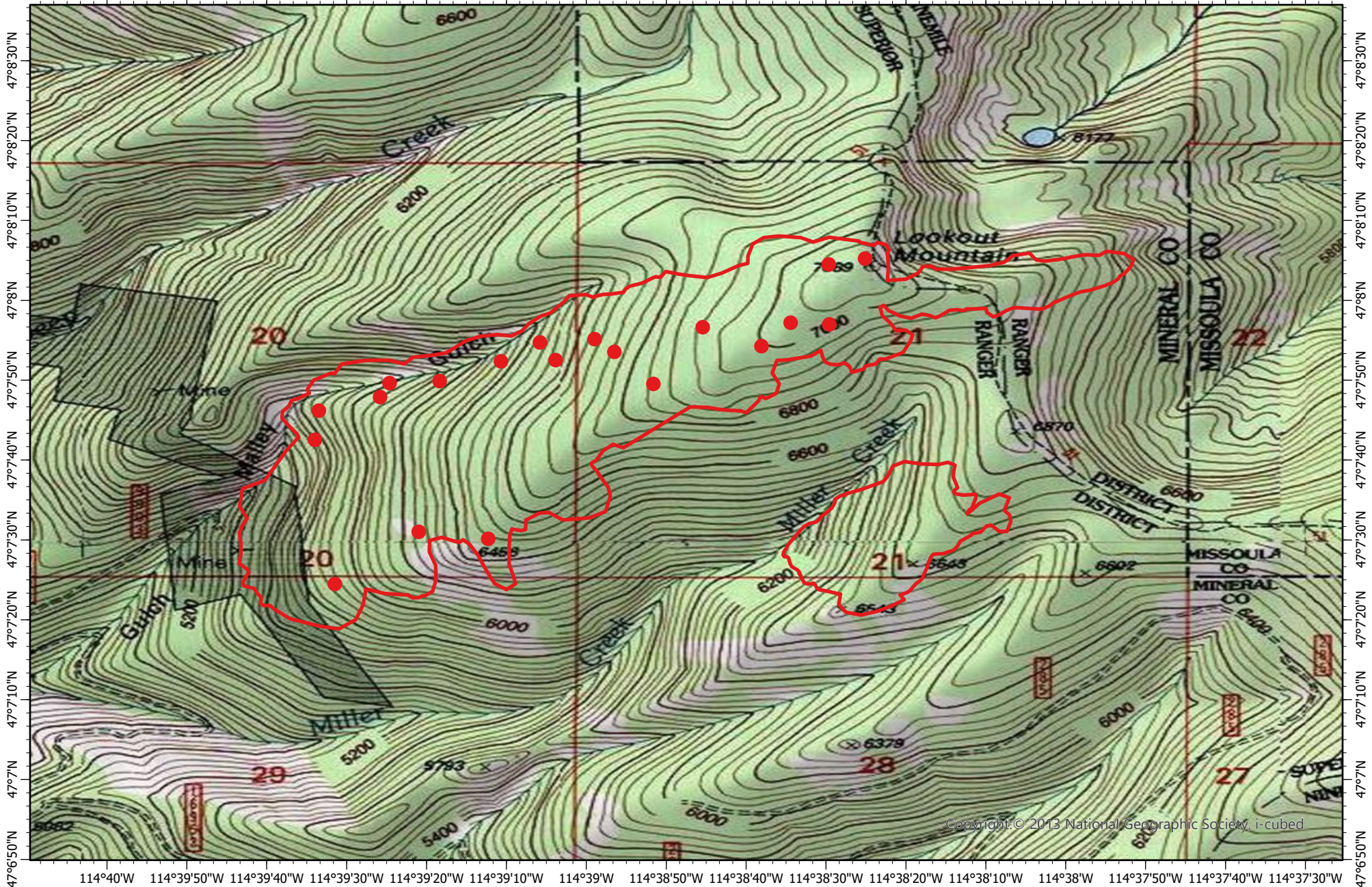


114°40'W 114°39'50"W 114°39'40"W 114°39'30"W 114°39'20"W 114°39'10"W 114°39'W 114°38'50"W 114°38'40"W 114°38'30"W 114°38'20"W 114°38'10"W 114°38'W 114°37'50"W 114°37'40"W 114°37'30"W



47°8'30"N
47°8'20"N
47°8'10"N
47°8'
47°7'50"N
47°7'40"N
47°7'30"N
47°7'20"N
47°7'10"N
47°7'
47°6'50"N

47°8'30"N
47°8'20"N
47°8'10"N
47°8'
47°7'50"N
47°7'40"N
47°7'30"N
47°7'20"N
47°7'10"N
47°7'
47°6'50"N

114°40'W 114°39'50"W 114°39'40"W 114°39'30"W 114°39'20"W 114°39'10"W 114°39'W 114°38'50"W 114°38'40"W 114°38'30"W 114°38'20"W 114°38'10"W 114°38'W 114°37'50"W 114°37'40"W 114°37'30"W

**West Lolo Complex Fire IR Map-
Deep Lookout Mountain
MT-LNF-000893**
Monday, 19 July 2021, 2330 MDT
365 Interpreted Acres

Scale: 1:20,000
Projection: WGS 1984
Produced by: Owyhee Air Research, LLC
IR Interpreter: E. Trout
Contact: fire@owyheear.com (208) 442-5405

Legend
● Isolated Heat
□ Burn Perimeter

0 0.25 0.5
Miles



Copyright © 2013 National Geographic Society, i-cubed