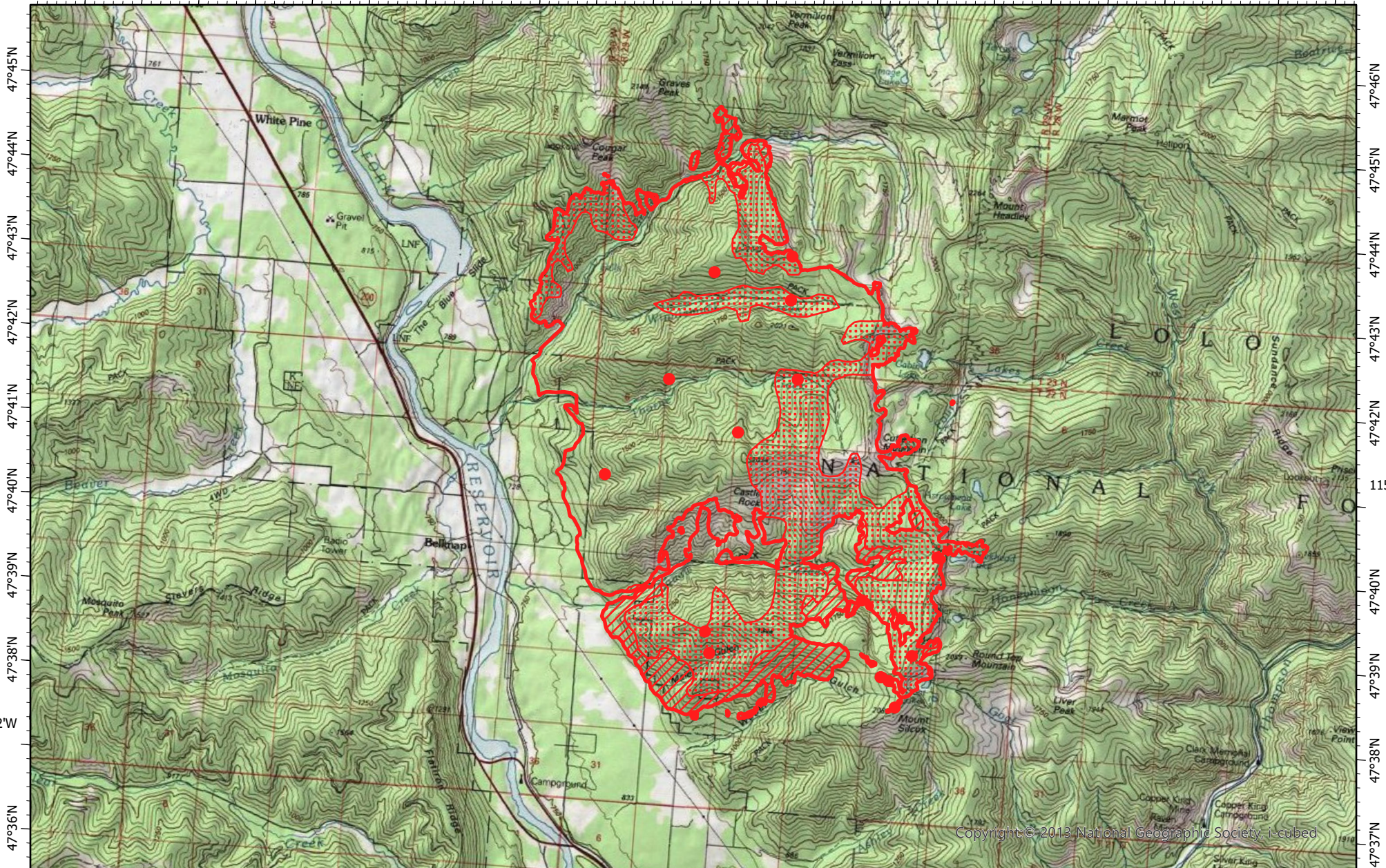


115°32'W 115°31'W 115°30'W 115°29'W 115°28'W 115°27'W 115°26'W 115°25'W 115°24'W 115°23'W 115°22'W 115°21'W 115°20'W 115°19'W 115°18'W 115°17'W 115°16'W 115°15'W 115°14'W 115°13'W 115°12'W 115°11'W 115°10'W



Copyright © 2013 National Geographic Society, i-cubed

115°31'W 115°30'W 115°29'W 115°28'W 115°27'W 115°26'W 115°25'W 115°24'W 115°23'W 115°22'W 115°21'W 115°20'W 115°19'W 115°18'W 115°17'W 115°16'W 115°15'W 115°14'W 115°13'W 115°12'W 115°11'W 115°10'W 115°9'W

**West Lolo Complex Fire IR Map**  
**Thorne and Winniemuck**  
**MT-LNF-000893**  
 Tuesday, 3 August 2021, 2206 MDT  
 17,923 Interpreted Acres

Scale: 1:115,000  
 Projection: North American 1983  
 Produced by: Owyhee Air Research, LLC  
 IR Interpreter: D. Merriman  
 Contact: fire@owyheear.com (208) 442-5405

**Legend**

- Isolated Heat
- Scattered Heat
- Intense Heat
- Burn Perimeter

0 1 2 3 4 Miles