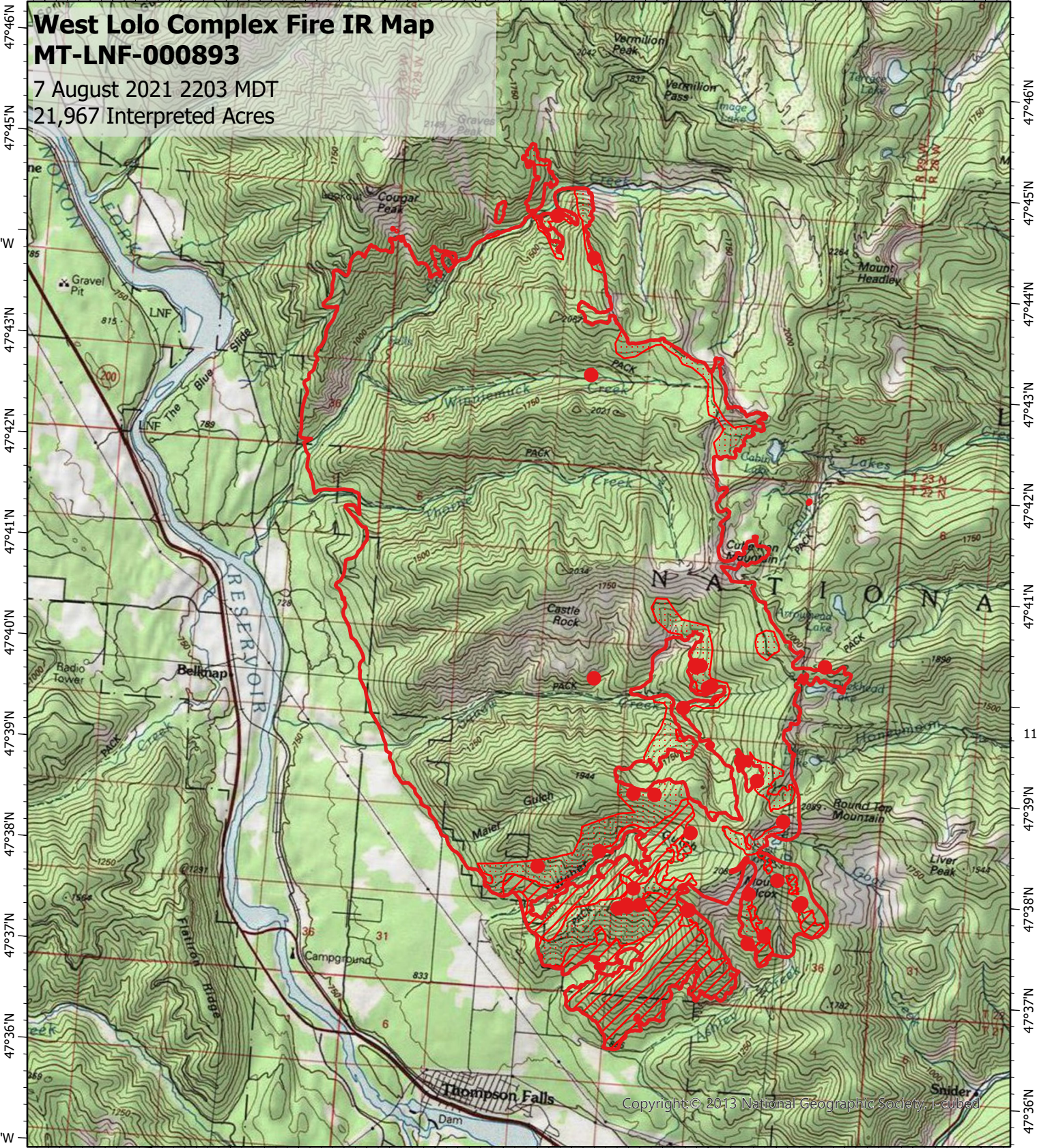


115°28'W 115°27'W 115°26'W 115°25'W 115°24'W 115°23'W 115°22'W 115°21'W 115°20'W 115°19'W 115°18'W 115°17'W 115°16'W 115°15'W 115°14'W



47°46'N
47°45'N
115°28'W
47°43'N
47°42'N
47°41'N
47°40'N
47°39'N
47°38'N
47°37'N
47°36'N
115°27'W

47°46'N
47°45'N
47°44'N
47°43'N
47°42'N
47°41'N
115°13'W
47°39'N
47°38'N
47°37'N
47°36'N

Copyright © 2013 National Geographic Society, i-cubed

115°26'W 115°25'W 115°24'W 115°23'W 115°22'W 115°21'W 115°20'W 115°19'W 115°18'W 115°17'W 115°16'W 115°15'W 115°14'W 115°13'W

- Legend**
- Isolated Heat
 - Burn Perimeter
 - Intense Heat
 - Scattered Heat

Scale: 1:95,000
 Projection: North American 1983
 Produced by: Owyhee Air Research, LLC
 IR Interpreter: D. Merriman
 Contact: fire@owyheear.com (208) 442-5405

