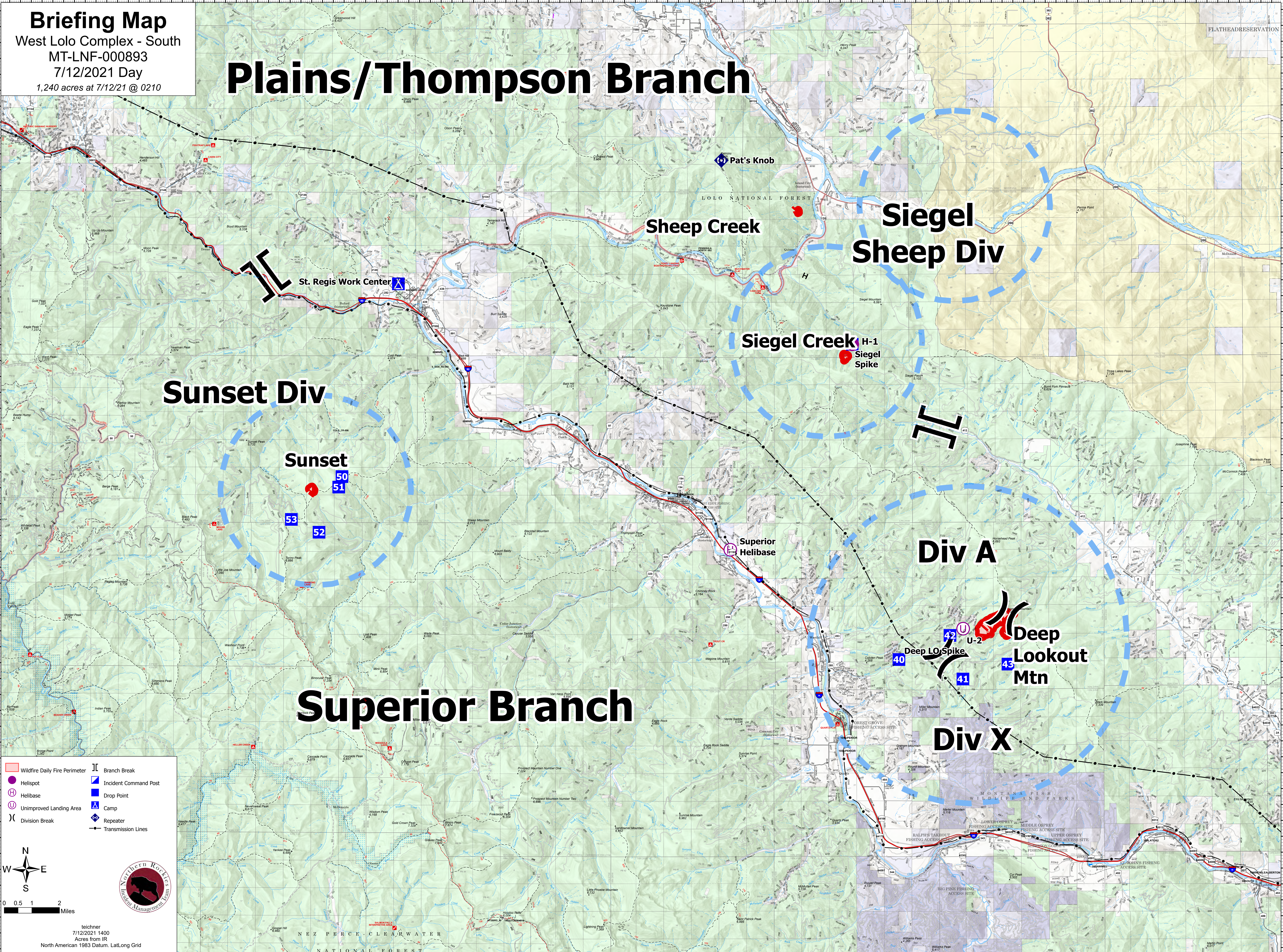


Briefing Map
 West Lolo Complex - South
 MT-LNF-000893
 7/12/2021 Day
 1,240 acres at 7/12/21 @ 0210

Plains/Thompson Branch



- Wildfire Daily Fire Perimeter
- Branch Break
- Helispot
- Incident Command Post
- Helibase
- Drop Point
- Unimproved Landing Area
- Camp
- Division Break
- Repeater
- Transmission Lines

teichner
 7/12/2021 1400
 Acres from IR
 North American 1983 Datum, LatLong Grid

115°24.5'W 115°23'W 115°21.5'W 115°20'W 115°18.5'W 115°17'W 115°15.5'W 115°14'W 115°12.5'W 115°11'W 115°9.5'W 115°8'W 115°7'W 115°6'W 115°5'W 115°4'W 115°3'W 115°2'W 115°1'W 115°W 114°59'W 114°57.5'W 114°56'W 114°54.5'W 114°53'W 114°51.5'W 114°50'W 114°48.5'W 114°47'W 114°45.5'W 114°44'W 114°42.5'W 114°41'W 114°39.5'W 114°38'W 114°36.5'W 114°35'W 114°33.5'W 114°32'W 114°30.5'W 114°29'W 114°27.5'W 114°26'W