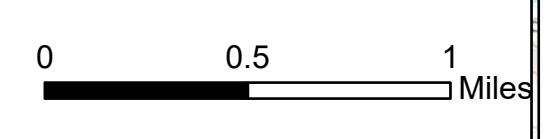
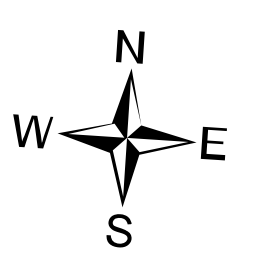
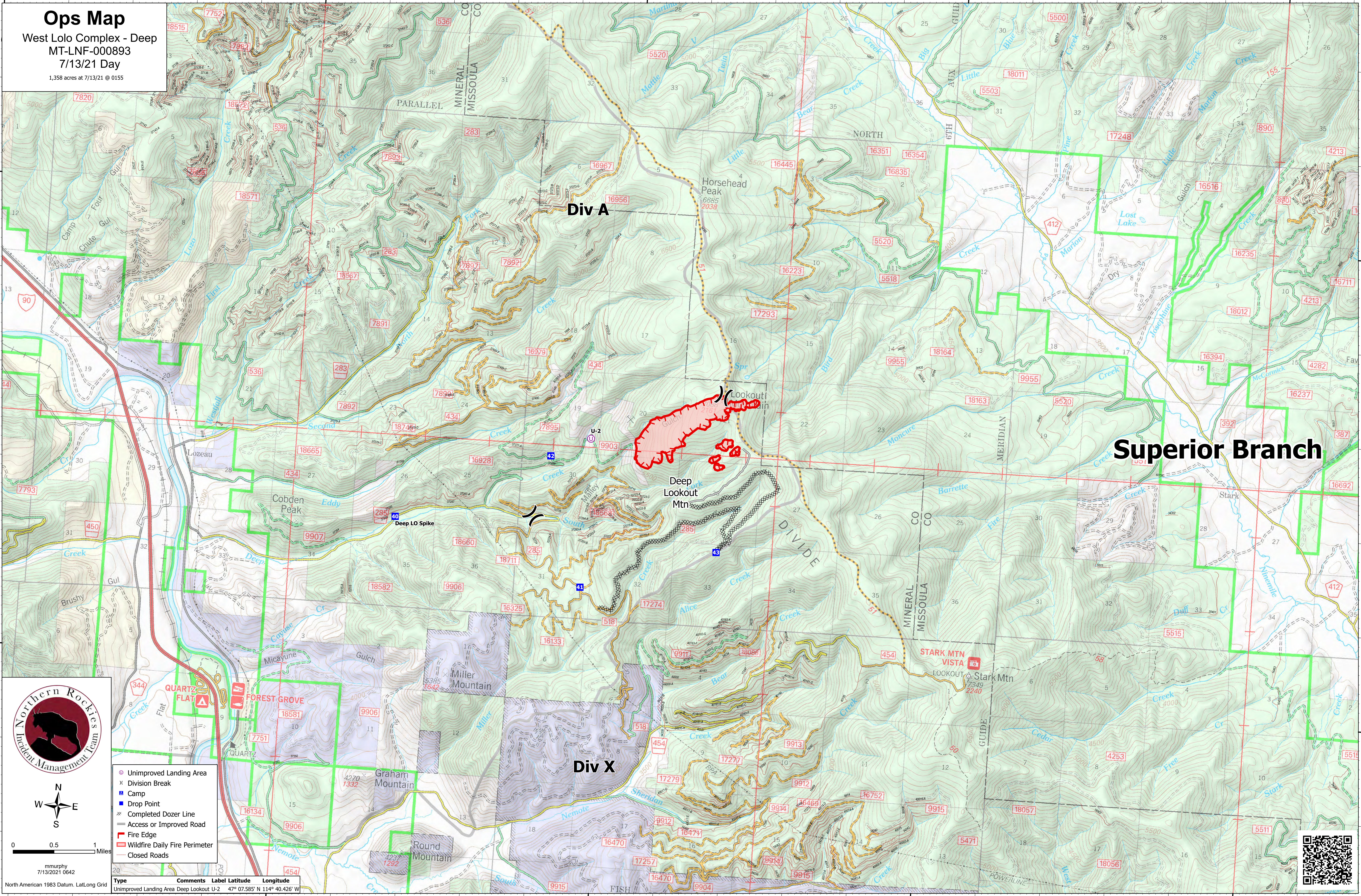


Ops Map

West Lolo Complex - Deep
MT-LNF-000893
7/13/21 Day
1,358 acres at 7/13/21 @ 0155



- ⊙ Unimproved Landing Area
- ⌘ Division Break
- Ⓜ Camp
- Ⓜ Drop Point
- ⊘ Completed Dozer Line
- Access or Improved Road
- ▬ Fire Edge
- ▬ Wildfire Daily Fire Perimeter
- Closed Roads

| Type | Comments | Label | Latitude | Longitude |
|-------------------------|------------------|-------|---------------|----------------|
| Unimproved Landing Area | Deep Lookout U-2 | | 47° 07.585' N | 114° 40.426' W |

