

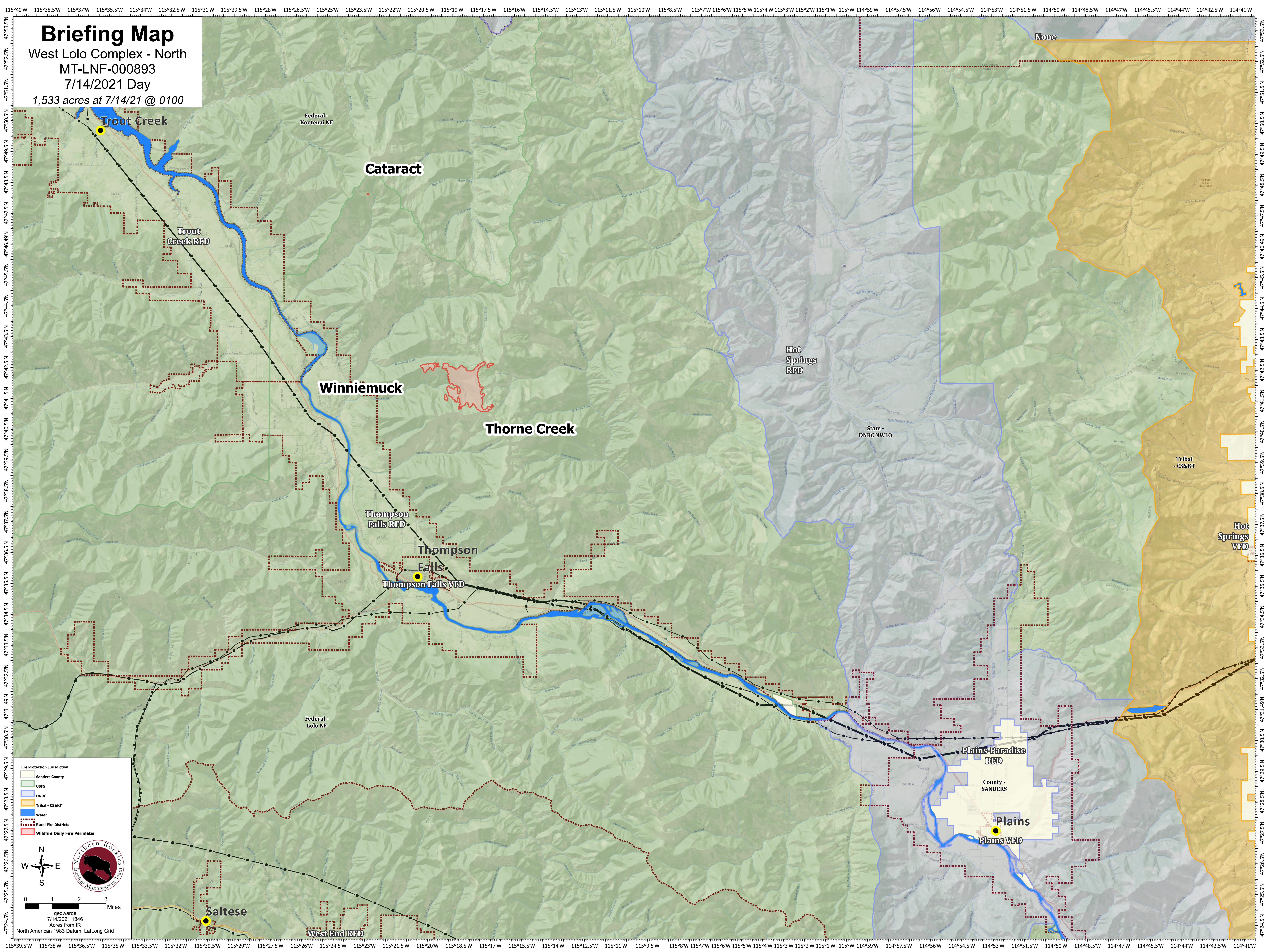
Briefing Map

West Lolo Complex - North

MT-LNF-000893

7/14/2021 Day

1,533 acres at 7/14/21 @ 0100



Fire Protection Jurisdiction

- Sanders County
- USFS
- DNRC
- Tribal - CS&KT
- Water
- Rural Fire Districts
- Wildfire Daily Fire Perimeter

Scale: 0 1 2 3 Miles

gedwards
7/14/2021 1846
Acres from IR
North American 1983 Datum, LatLong Grid