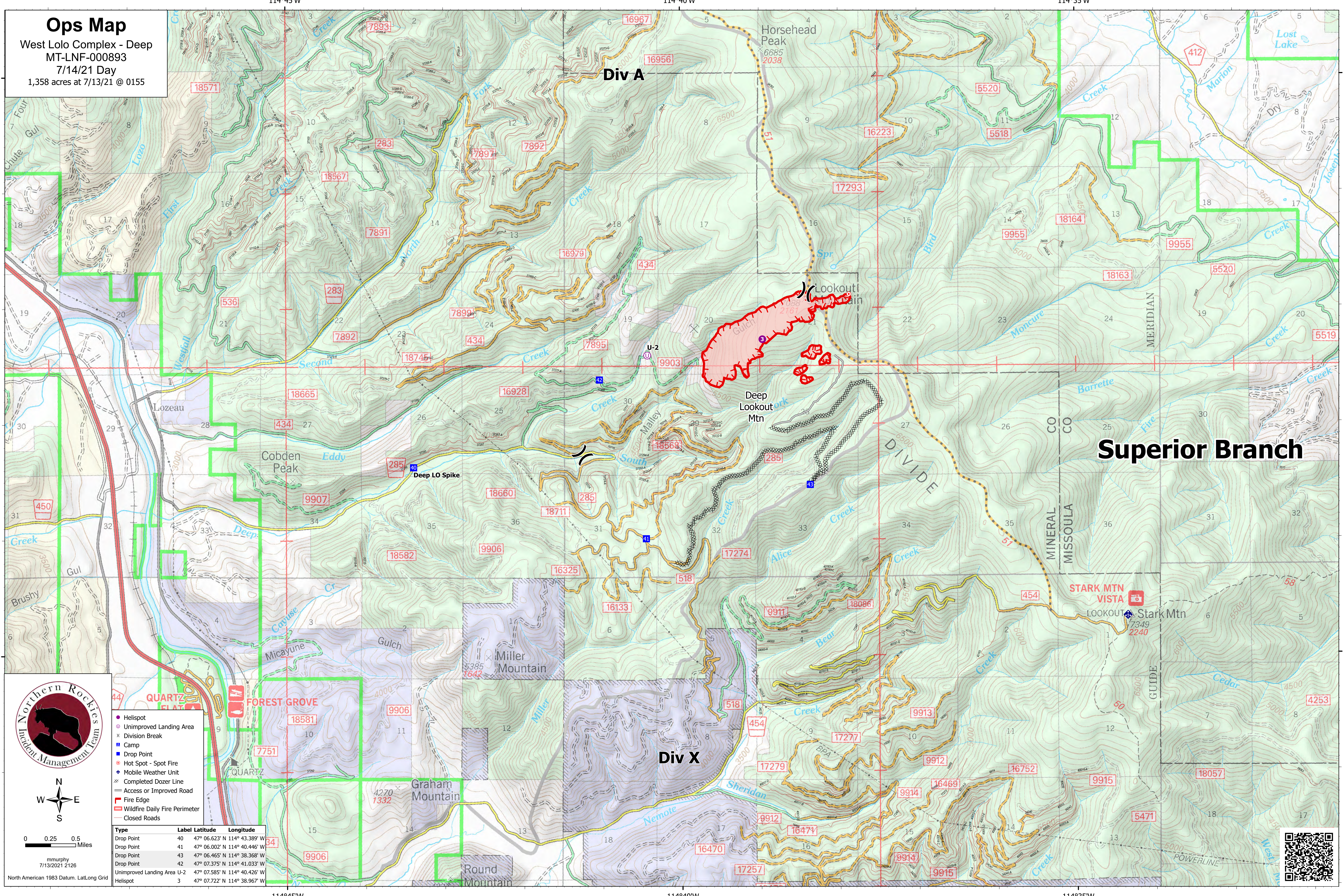


Ops Map

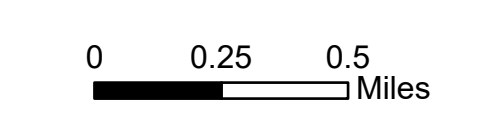
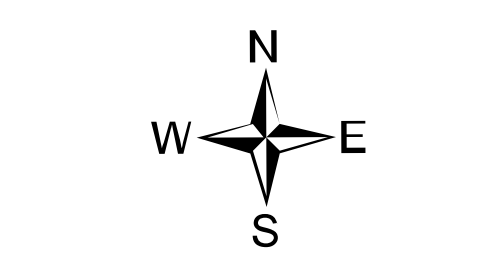
West Lolo Complex - Deep
 MT-LNF-000893
 7/14/21 Day
 1,358 acres at 7/13/21 @ 0155



Div A

Superior Branch

Div X



- Helispot
- Unimproved Landing Area
- ✕ Division Break
- Camp
- Drop Point
- Hot Spot - Spot Fire
- ◆ Mobile Weather Unit
- ⊗ Completed Dozer Line
- Access or Improved Road
- Fire Edge
- Wildfire Daily Fire Perimeter
- Closed Roads

Type	Label	Latitude	Longitude
Drop Point	40	47° 06.623' N	114° 43.389' W
Drop Point	41	47° 06.002' N	114° 40.446' W
Drop Point	43	47° 06.465' N	114° 38.368' W
Drop Point	42	47° 07.375' N	114° 41.033' W
Unimproved Landing Area U-2	47	47° 07.585' N	114° 40.426' W
Helispot	3	47° 07.722' N	114° 38.967' W



47°5'N

47°5'N

47°10'N

47°10'N

114°45'W

114°40'W

114°35'W