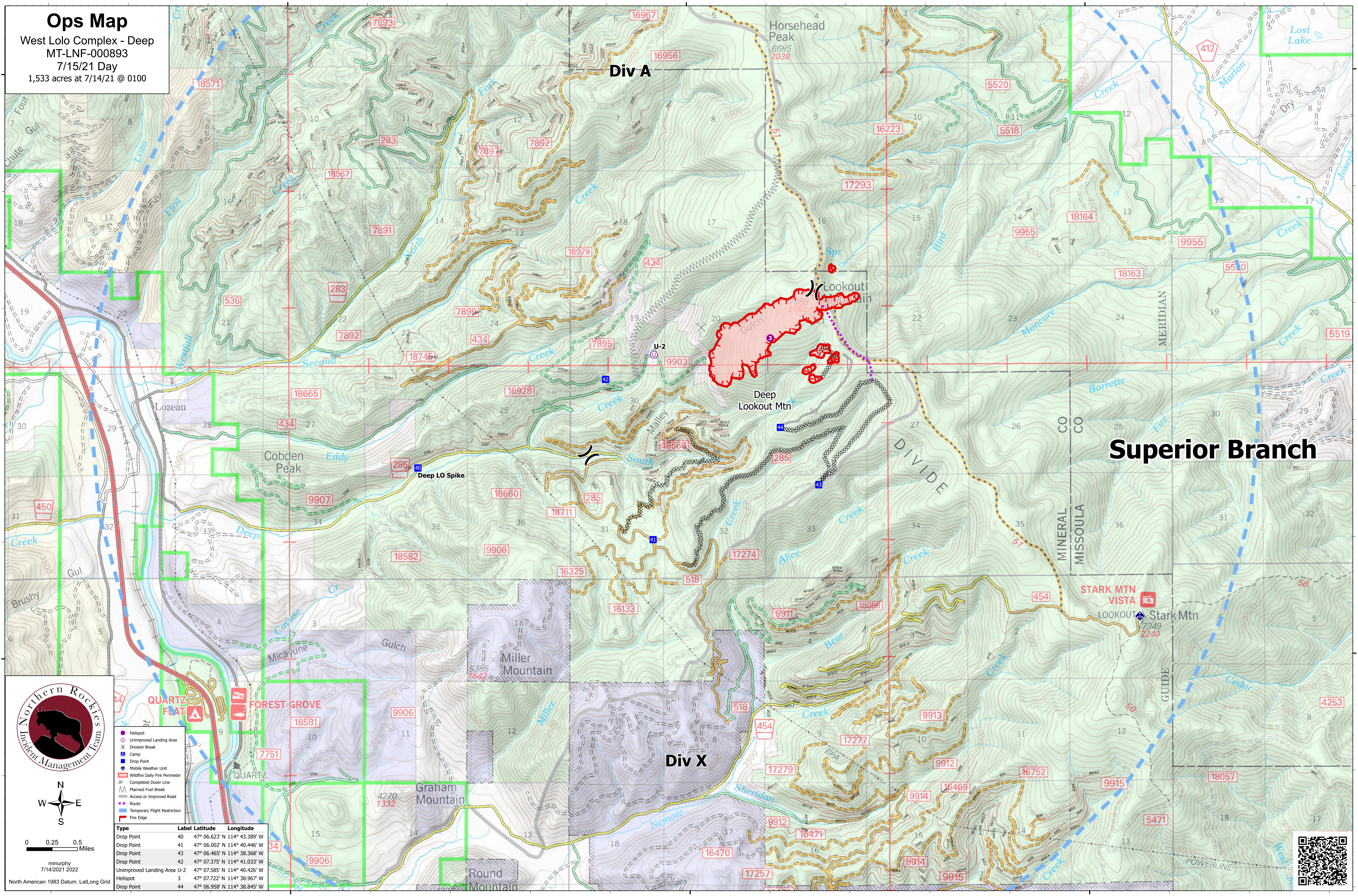


Ops Map

West Lolo Complex - Deep
MT-LNF-000893
7/15/21 Day
1,533 acres at 7/14/21 @ 0100



0 0.25 0.5 Miles

mmurphy
7/14/2021 2022
North American 1983 Datum, LatLong Grid

- Helispot
- Unimproved Landing Area
- ⌘ Division Break
- Camp
- Drop Point
- Mobile Weather Unit
- Wildfire Daily Fire Perimeter
- ⊗ Completed Dozer Line
- ⊘ Planned Fuel Break
- Access or Improved Road
- Route
- Temporary Flight Restriction
- Fire Edge

Type	Label	Latitude	Longitude
Drop Point	40	47° 06.623' N	114° 43.389' W
Drop Point	41	47° 06.002' N	114° 40.446' W
Drop Point	43	47° 06.465' N	114° 38.368' W
Drop Point	42	47° 07.375' N	114° 41.033' W
Unimproved Landing Area U-2		47° 07.585' N	114° 40.426' W
Helispot	3	47° 07.722' N	114° 38.967' W
Drop Point	44	47° 06.958' N	114° 38.845' W

