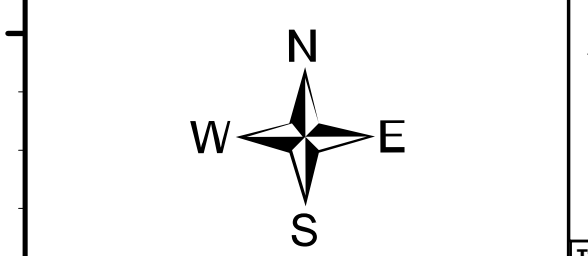
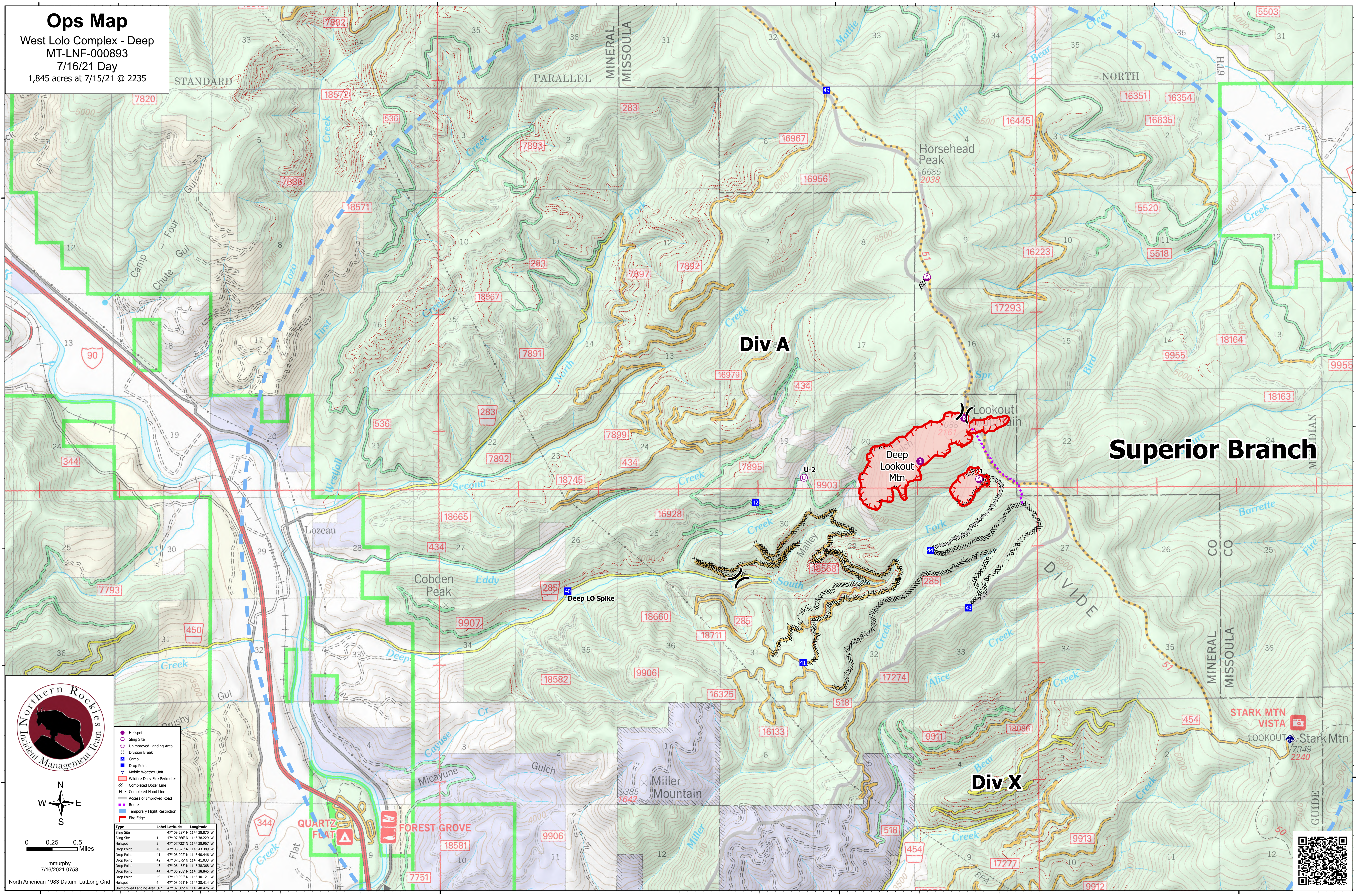


Ops Map
 West Lolo Complex - Deep
 MT-LNF-000893
 7/16/21 Day
 1,845 acres at 7/15/21 @ 2235



0 0.25 0.5 Miles
 mmurphy
 7/16/2021 0758
 North American 1983 Datum, LatLong Grid

| Type | Label | Latitude | Longitude |
|-----------------------------|-------|---------------|----------------|
| Sling Site | 1 | 47° 09.297' N | 114° 38.870' W |
| Sling Site | 2 | 47° 03.565' N | 114° 38.209' W |
| Helispot | 3 | 47° 07.722' N | 114° 38.967' W |
| Drop Point | 40 | 47° 06.622' N | 114° 43.389' W |
| Drop Point | 41 | 47° 06.002' N | 114° 40.446' W |
| Drop Point | 42 | 47° 02.375' N | 114° 41.033' W |
| Drop Point | 43 | 47° 06.462' N | 114° 38.368' W |
| Drop Point | 44 | 47° 06.958' N | 114° 38.845' W |
| Drop Point | 49 | 47° 10.902' N | 114° 40.121' W |
| Helispot | 6 | 47° 08.091' N | 114° 38.414' W |
| Unimproved Landing Area U-2 | | 47° 07.585' N | 114° 40.438' W |

