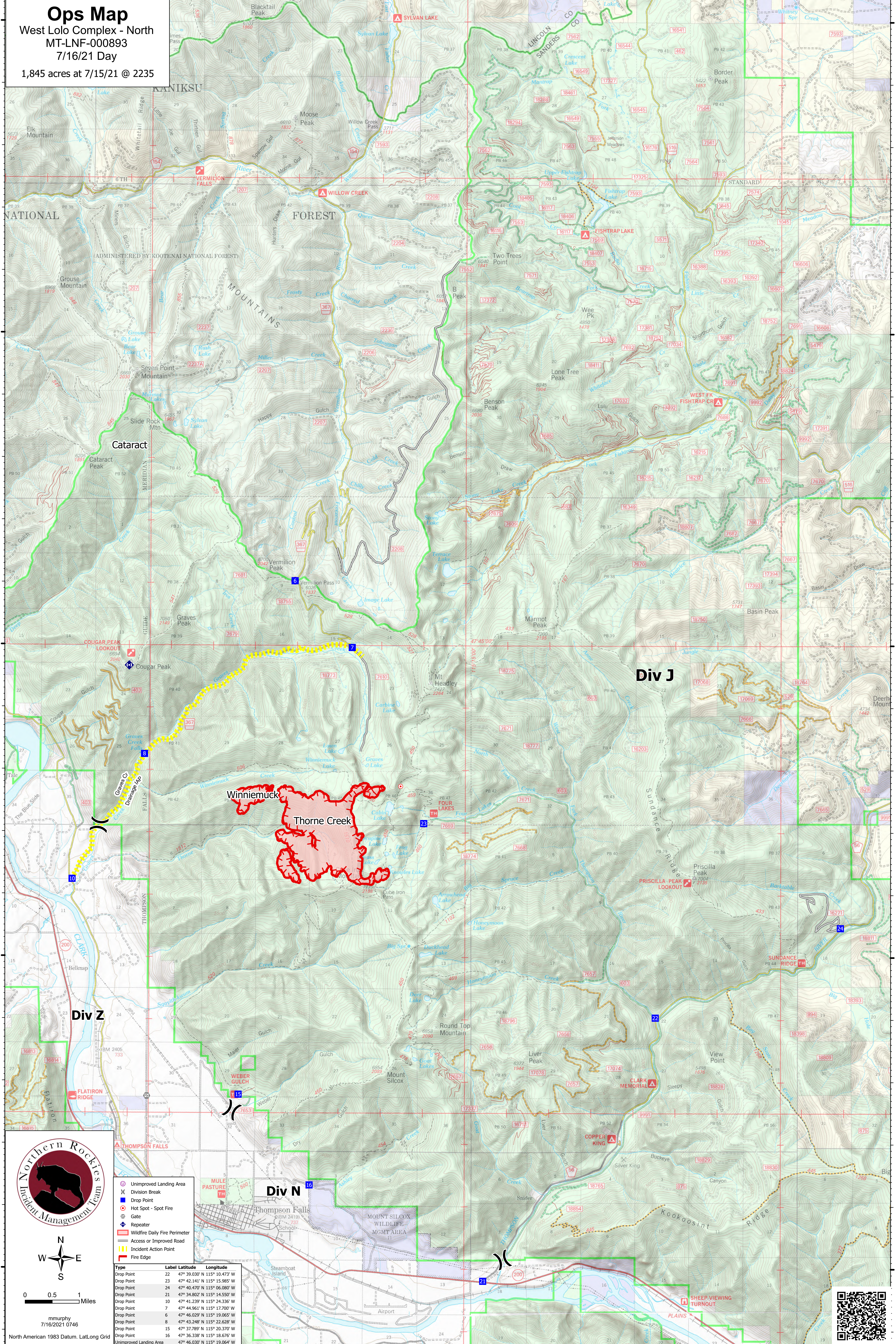


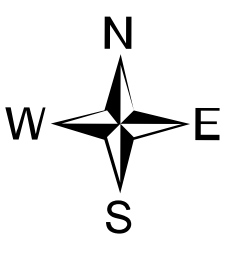
Ops Map

West Lolo Complex - North
 MT-LNF-000893
 7/16/21 Day
 1,845 acres at 7/15/21 @ 2235



- Unimproved Landing Area
- Division Break
- Drop Point
- Hot Spot - Spot Fire
- Gate
- Repeater
- Wildfire Daily Fire Perimeter
- Access or Improved Road
- Incident Action Point
- Fire Edge

Type	Label	Latitude	Longitude
Drop Point	22	47° 39.030' N	115° 10.473' W
Drop Point	23	47° 42.141' N	115° 15.985' W
Drop Point	24	47° 40.470' N	115° 06.080' W
Drop Point	21	47° 34.802' N	115° 14.550' W
Drop Point	10	47° 41.239' N	115° 24.336' W
Drop Point	7	47° 44.961' N	115° 17.700' W
Drop Point	6	47° 46.029' N	115° 19.065' W
Drop Point	8	47° 43.249' N	115° 22.628' W
Drop Point	15	47° 37.789' N	115° 20.370' W
Drop Point	16	47° 36.338' N	115° 18.676' W
Unimproved Landing Area		47° 46.030' N	115° 19.064' W



0 0.5 1 Miles

mmurphy
 7/16/2021 0746
 North American 1983 Datum. LatLong Grid

