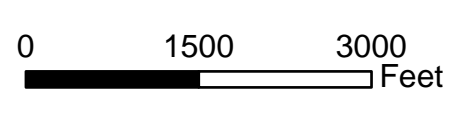
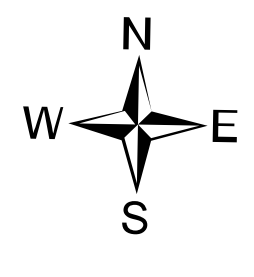
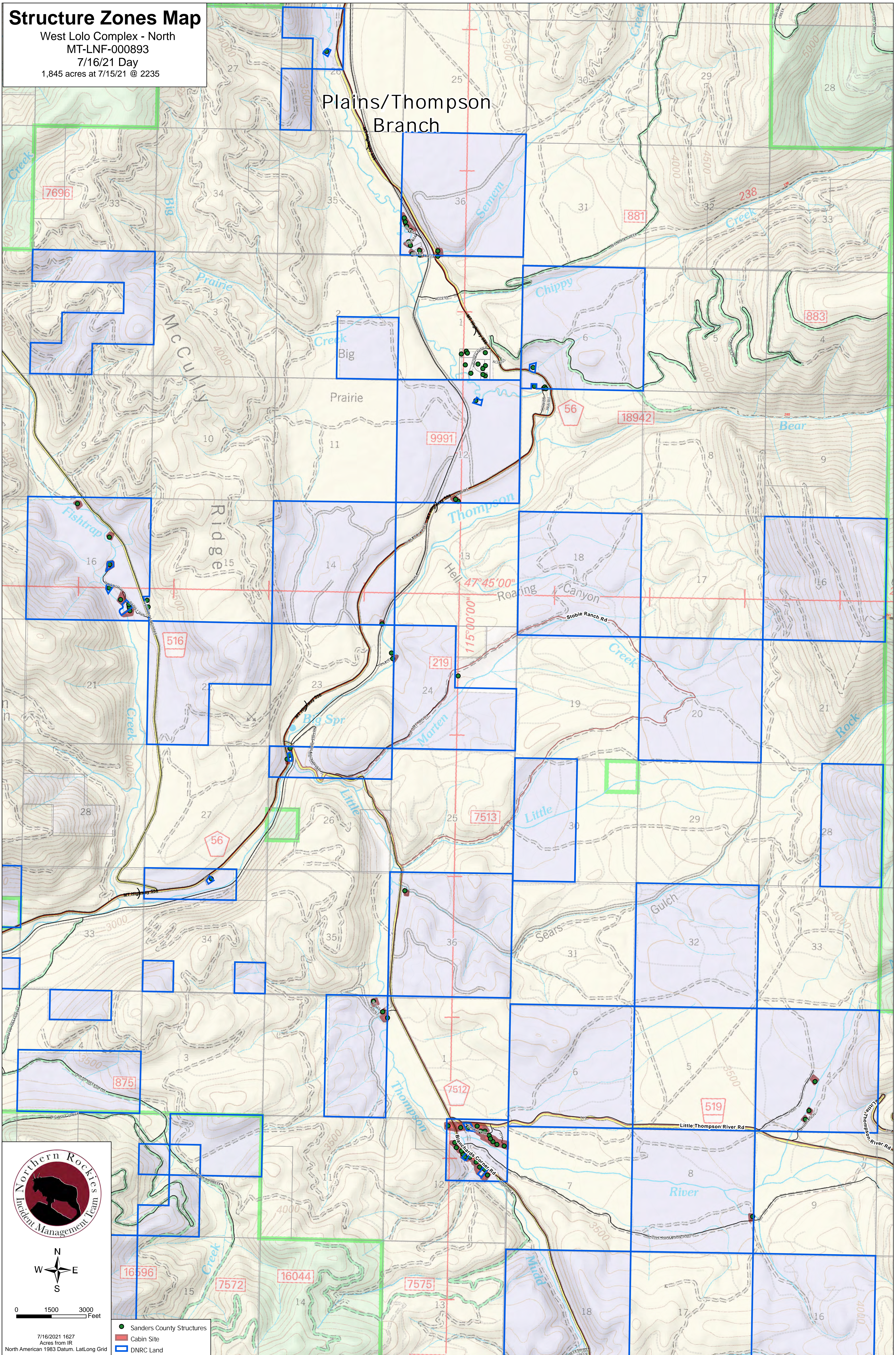


Structure Zones Map

West Lolo Complex - North
MT-LNF-000893
7/16/21 Day
1,845 acres at 7/15/21 @ 2235

Plains/Thompson Branch



- Sanders County Structures
- Cabin Site
- DNRC Land

7/16/2021 1627
Acres from IR
North American 1983 Datum, LatLong Grid