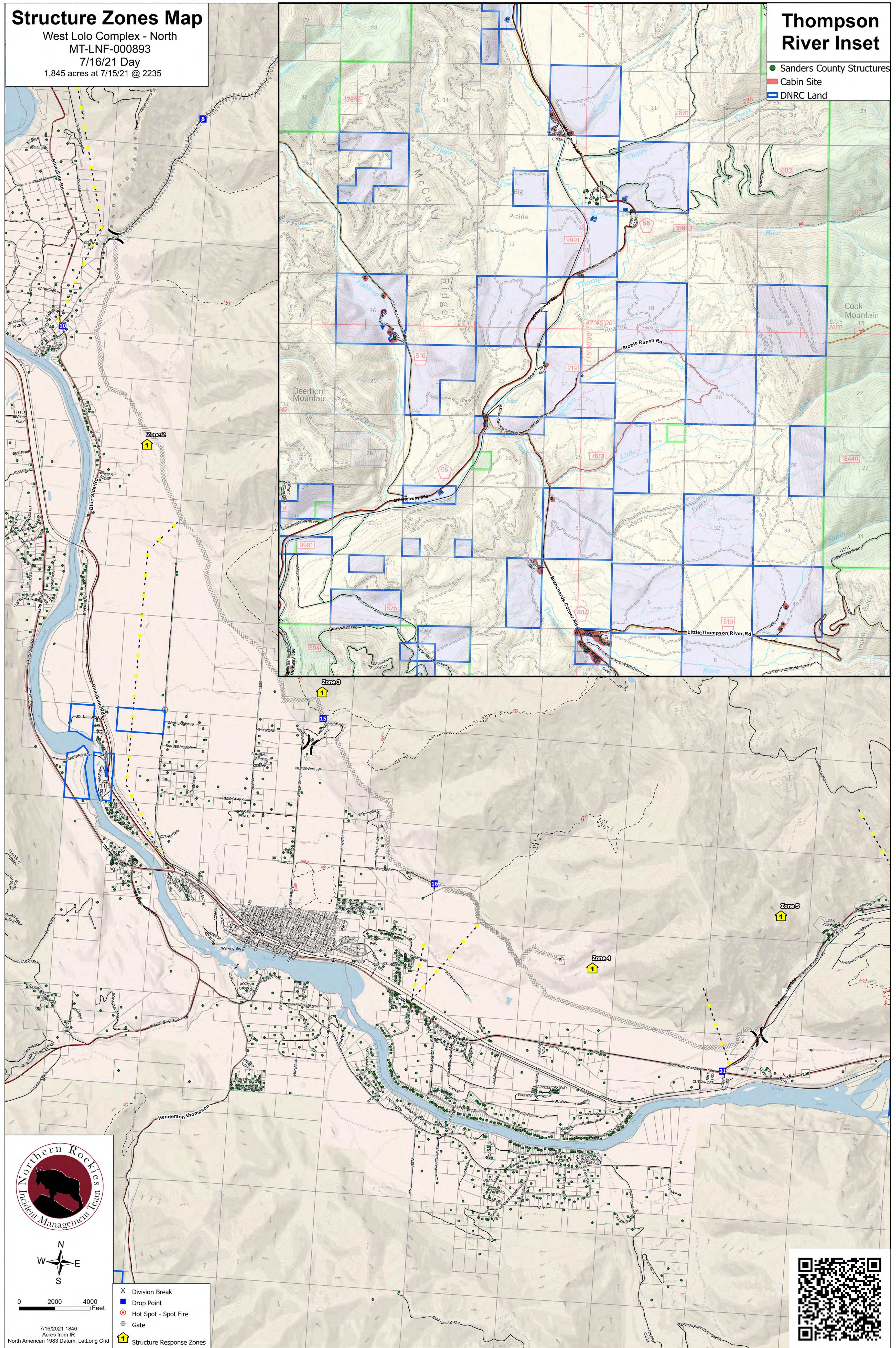


# Structure Zones Map

West Lolo Complex - North  
MT-LNF-000893  
7/16/21 Day  
1,845 acres at 7/15/21 @ 2235

# Thompson River Inset

- Sanders County Structures
- Cabin Site
- DNRC Land



0 2000 4000 Feet

- X Division Break
- Drop Point
- Hot Spot - Spot Fire
- ⊙ Gate
- 🏠 Structure Response Zones

7/16/2021 1846  
Acres from IR  
North American 1983 Datum, Lat/Long Grid

