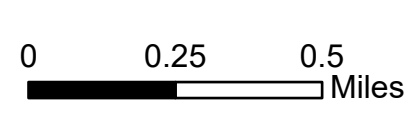
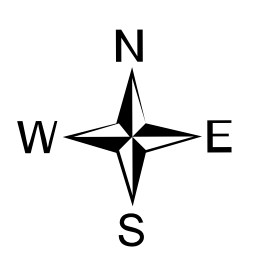
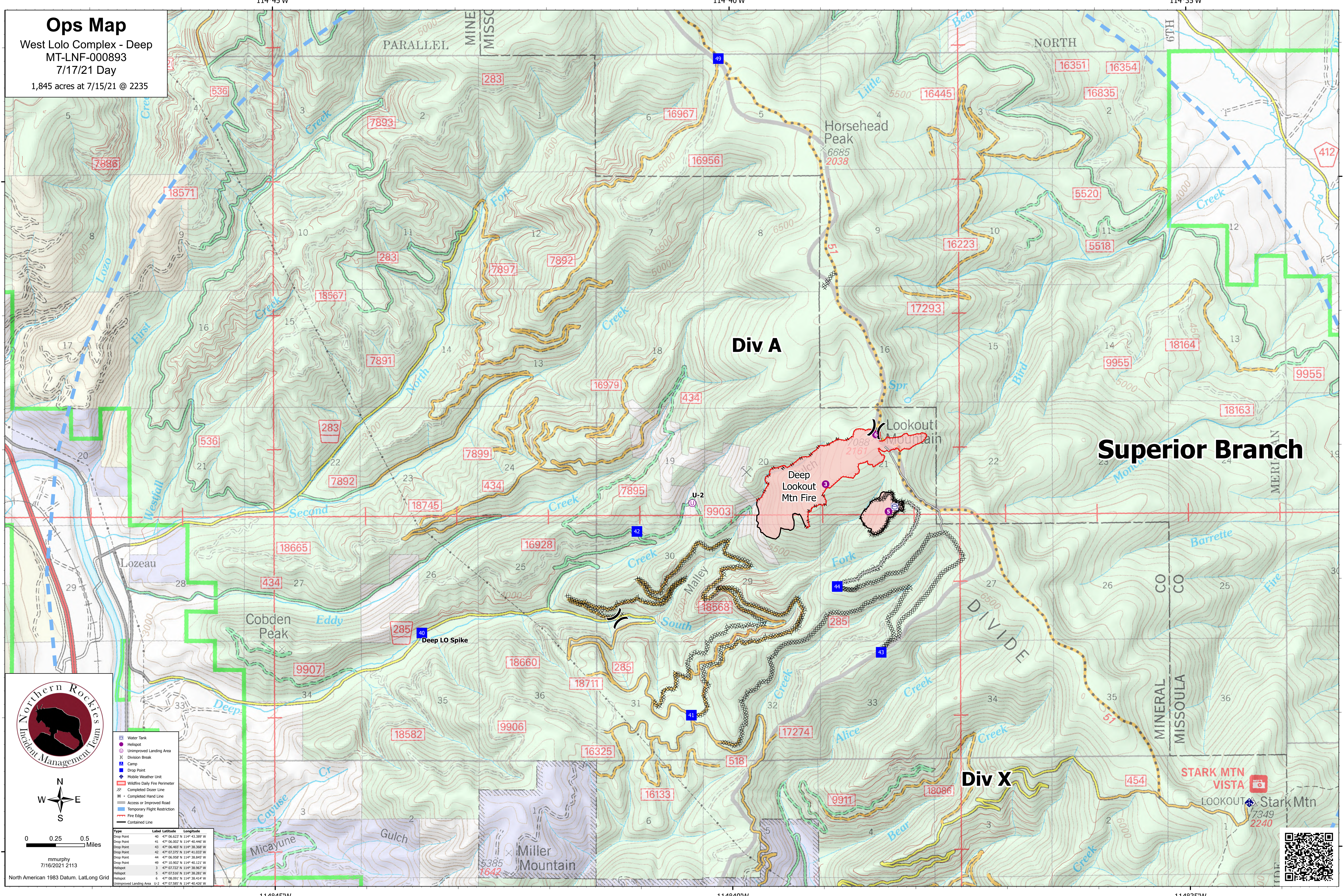


# Ops Map

West Lolo Complex - Deep  
MT-LNF-000893  
7/17/21 Day  
1,845 acres at 7/15/21 @ 2235



mmurphy  
7/16/2021 2113  
North American 1983 Datum, LatLong Grid

- Water Tank
- Hellspot
- Unimproved Landing Area
- Division Break
- Camp
- Drop Point
- Mobile Weather Unit
- Wildfire Daily Fire Perimeter
- Completed Dozer Line
- Completed Hand Line
- Access or Improved Road
- Temporary Flight Restriction
- Fire Edge
- Contained Line

Type	Label	Latitude	Longitude
Drop Point	40	47° 06.623' N	114° 43.389' W
Drop Point	41	47° 06.602' N	114° 40.446' W
Drop Point	43	47° 06.465' N	114° 38.368' W
Drop Point	42	47° 07.375' N	114° 41.033' W
Drop Point	44	47° 06.958' N	114° 38.845' W
Drop Point	49	47° 05.902' N	114° 40.121' W
Hellspot	3	47° 07.222' N	114° 38.967' W
Hellspot	5	47° 07.516' N	114° 38.281' W
Hellspot	6	47° 08.091' N	114° 38.414' W
Unimproved Landing Area	U-2	47° 07.585' N	114° 40.426' W

