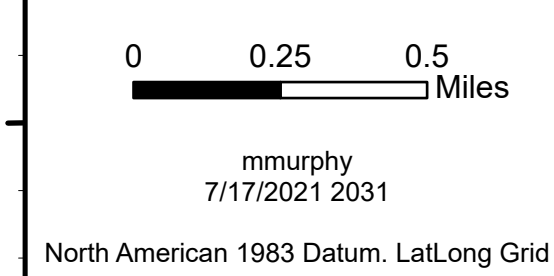
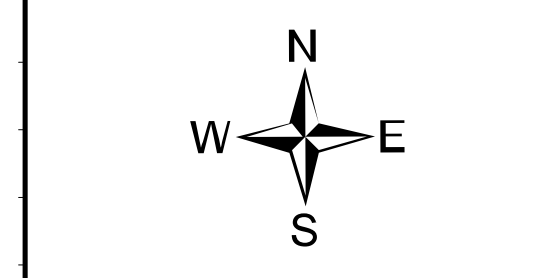
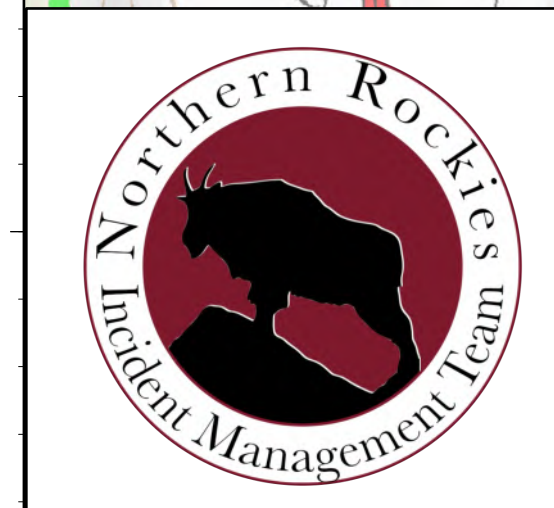
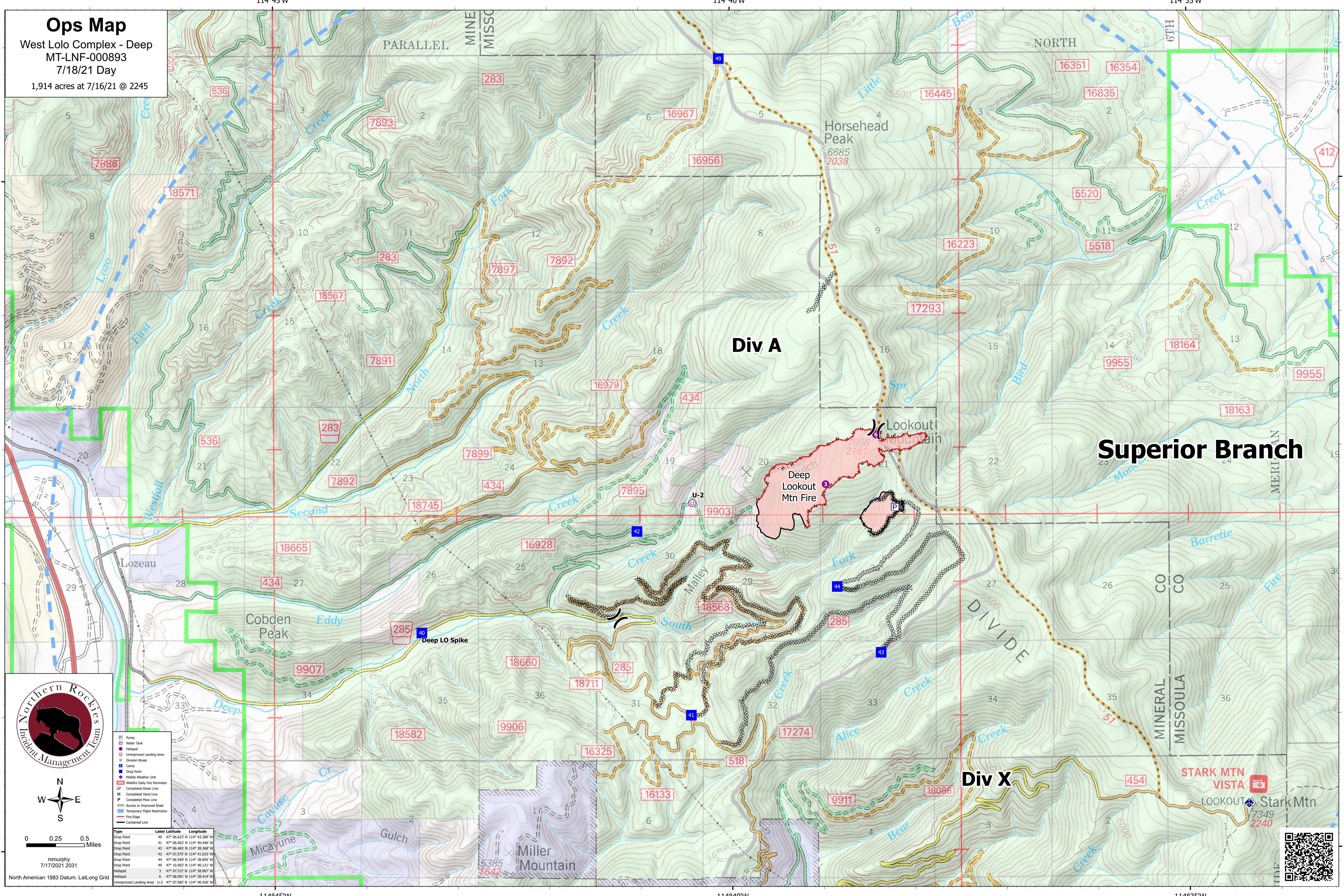


# Ops Map

West Lolo Complex - Deep  
MT-LNF-000893  
7/18/21 Day  
1,914 acres at 7/16/21 @ 2245



mmurphy  
7/17/2021 2031  
North American 1983 Datum, Lat/Long Grid

Type	Label	Latitude	Longitude
Drop Point	40	47° 06.623' N	114° 43.389' W
Drop Point	41	47° 06.002' N	114° 40.446' W
Drop Point	43	47° 06.468' N	114° 38.569' W
Drop Point	42	47° 07.375' N	114° 41.033' W
Drop Point	44	47° 06.958' N	114° 38.845' W
Drop Point	49	47° 10.902' N	114° 40.121' W
Helipod	3	47° 07.722' N	114° 38.967' W
Helipod	4	47° 06.951' N	114° 38.414' W
Unimproved Landing Area	U-2	47° 07.585' N	114° 40.426' W

