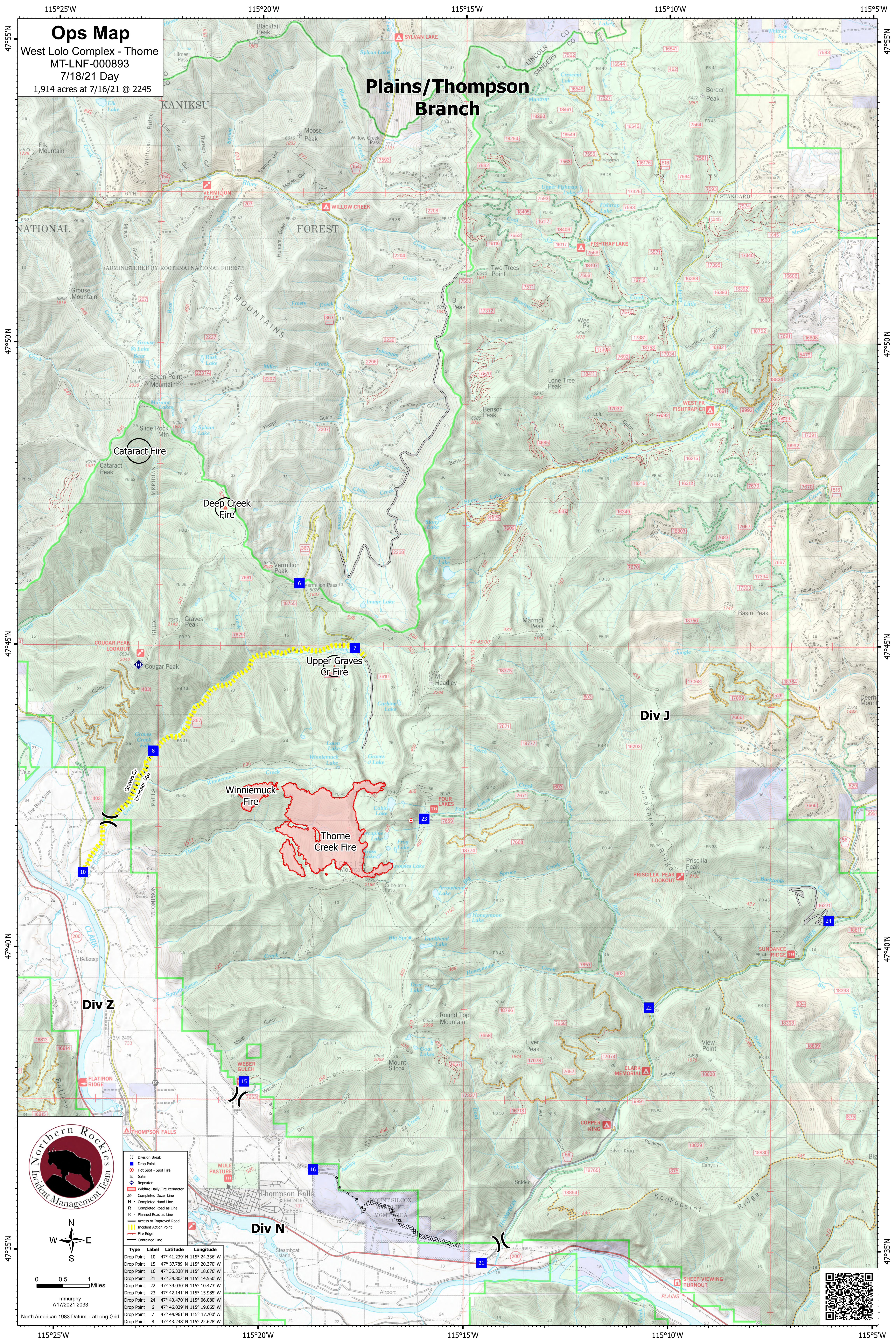


# Ops Map

West Lolo Complex - Thorne  
MT-LNF-000893  
7/18/21 Day  
1,914 acres at 7/16/21 @ 2245

## Plains/Thompson Branch



- X Division Break
- Drop Point
- Hot Spot - Spot Fire
- ◆ Repeater
- ⊕ Gate
- ▬ Wireline Daily Fire Perimeter
- ▬ Completed Doser Line
- H - Completed Hand Line
- R - Completed Road as Line
- R - Planned Road as Line
- ▬ Access or Improved Road
- ▬ Incident Action Point
- ▬ Fire Edge
- ▬ Contained Line

Type	Label	Latitude	Longitude
Drop Point	10	47° 41.239' N	115° 24.336' W
Drop Point	15	47° 37.789' N	115° 20.370' W
Drop Point	16	47° 36.338' N	115° 18.676' W
Drop Point	21	47° 34.802' N	115° 14.550' W
Drop Point	22	47° 39.030' N	115° 10.473' W
Drop Point	23	47° 42.141' N	115° 15.985' W
Drop Point	24	47° 40.470' N	115° 06.080' W
Drop Point	64	47° 46.029' N	115° 19.065' W
Drop Point	74	47° 44.961' N	115° 17.700' W
Drop Point	8	47° 43.248' N	115° 22.628' W

0 0.5 1 Miles  
mmurphy  
7/17/2021 2033  
North American 1983 Datum. Lat/Long Grid

