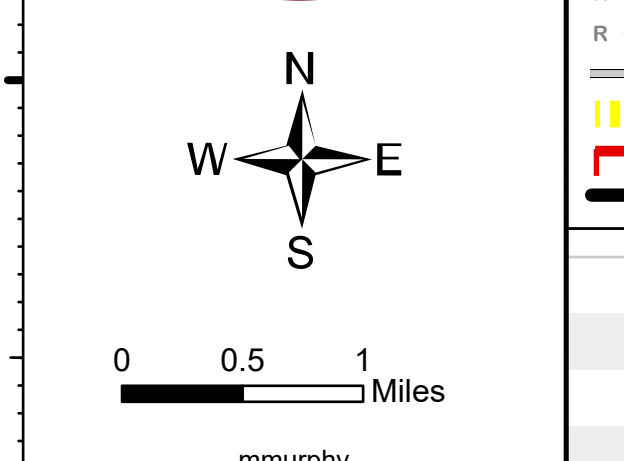
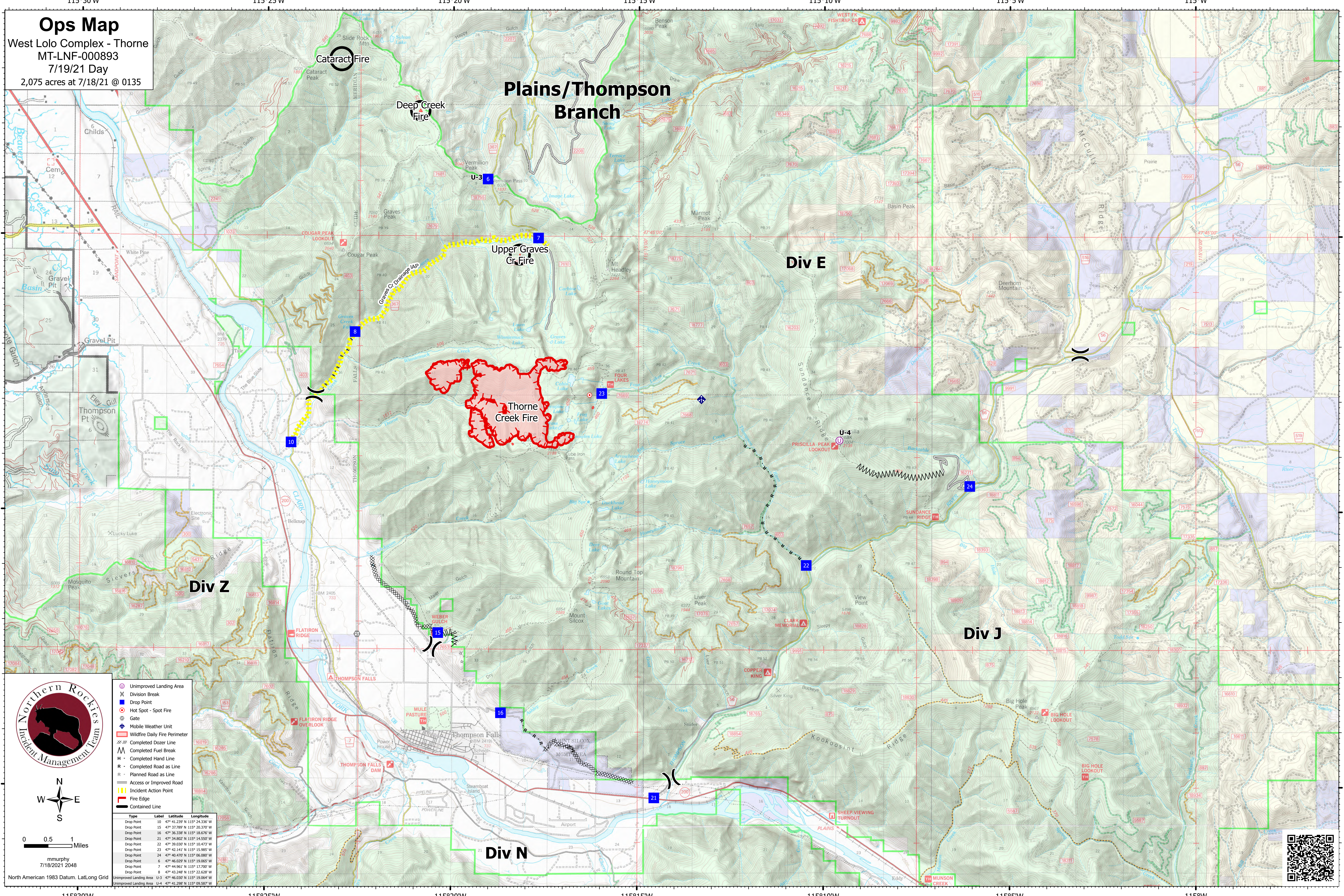


**Ops Map**  
 West Lolo Complex - Thorne  
 MT-LNF-000893  
 7/19/21 Day  
 2,075 acres at 7/18/21 @ 0135



mmurphy  
 7/18/2021 2048  
 North American 1983 Datum, Lat/Long Grid

- ⊙ Unimproved Landing Area
- ⌋ Division Break
- Drop Point
- ⊙ Hot Spot - Spot Fire
- ⊙ Gate
- ⊙ Mobile Weather Unit
- ▭ Wildfire Daily Fire Perimeter
- ⊗ Completed Dozer Line
- ⊗ Completed Fuel Break
- ⊗ Completed Hand Line
- ⊗ Completed Road as Line
- ⊗ Planned Road as Line
- ⊗ Access or Improved Road
- ⊗ Incident Action Point
- ▭ Fire Edge
- ▭ Contained Line

Type	Label	Latitude	Longitude
Drop Point	10	47° 41.239' N	115° 24.336' W
Drop Point	15	47° 33.789' N	115° 20.710' W
Drop Point	16	47° 36.338' N	115° 18.676' W
Drop Point	21	47° 34.802' N	115° 14.550' W
Drop Point	22	47° 39.030' N	115° 10.473' W
Drop Point	23	47° 42.141' N	115° 15.985' W
Drop Point	24	47° 46.470' N	115° 06.980' W
Drop Point	6	47° 46.020' N	115° 19.065' W
Drop Point	7	47° 44.962' N	115° 17.700' W
Drop Point	8	47° 43.248' N	115° 22.628' W
Unimproved Landing Area	U-3	47° 46.030' N	115° 19.064' W
Unimproved Landing Area	U-4	47° 41.297' N	115° 09.597' W

