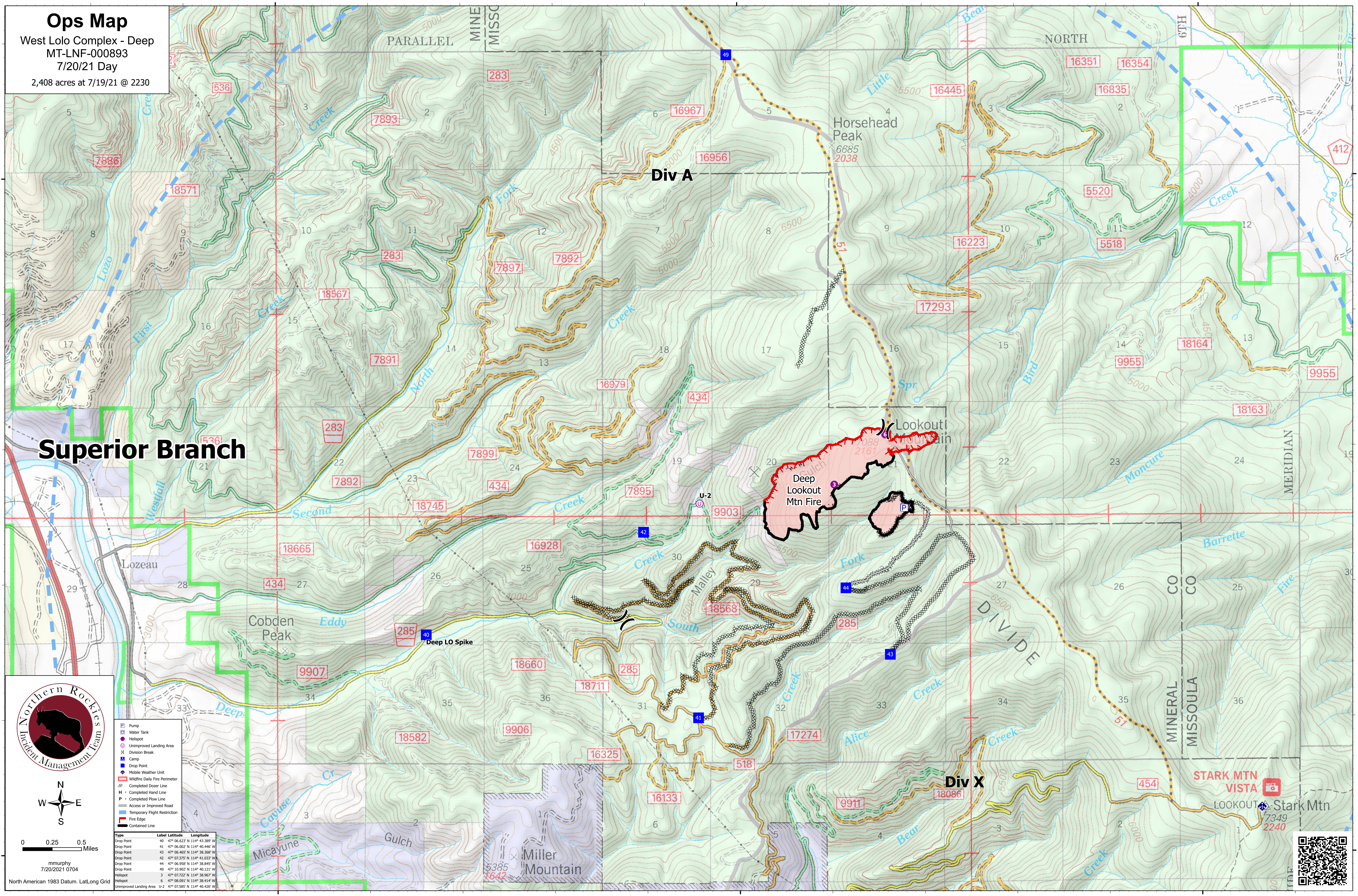
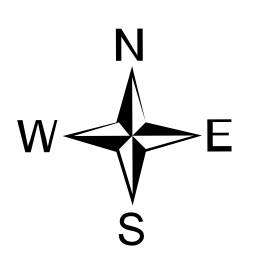


Ops Map

West Lolo Complex - Deep
MT-LNF-000893
7/20/21 Day
2,408 acres at 7/19/21 @ 2230



Superior Branch



0 0.25 0.5 Miles
mmurphy
7/20/2021 0704
North American 1983 Datum, Lat/Long Grid

- Pump
- Water Tank
- Helispot
- Unimproved Landing Area
- Division Break
- Camp
- Drop Point
- Mobile Weather Unit
- Wildfire Daily Fire Perimeter
- Completed Dozer Line
- Completed Hand Line
- Completed Plov Line
- Access or Improved Road
- Temporary Flight Restriction
- Fire Edge
- Contained Line

Type	Label	Latitude	Longitude
Drop Point	40	47° 06.623' N	114° 43.389' W
Drop Point	41	47° 06.002' N	114° 40.446' W
Drop Point	43	47° 06.468' N	114° 38.569' W
Drop Point	42	47° 07.375' N	114° 41.033' W
Drop Point	44	47° 06.958' N	114° 38.845' W
Drop Point	49	47° 10.902' N	114° 40.121' W
Helispot	3	47° 07.722' N	114° 38.967' W
Helispot	4	47° 06.991' N	114° 38.414' W
Unimproved Landing Area	U-2	47° 07.585' N	114° 40.426' W

