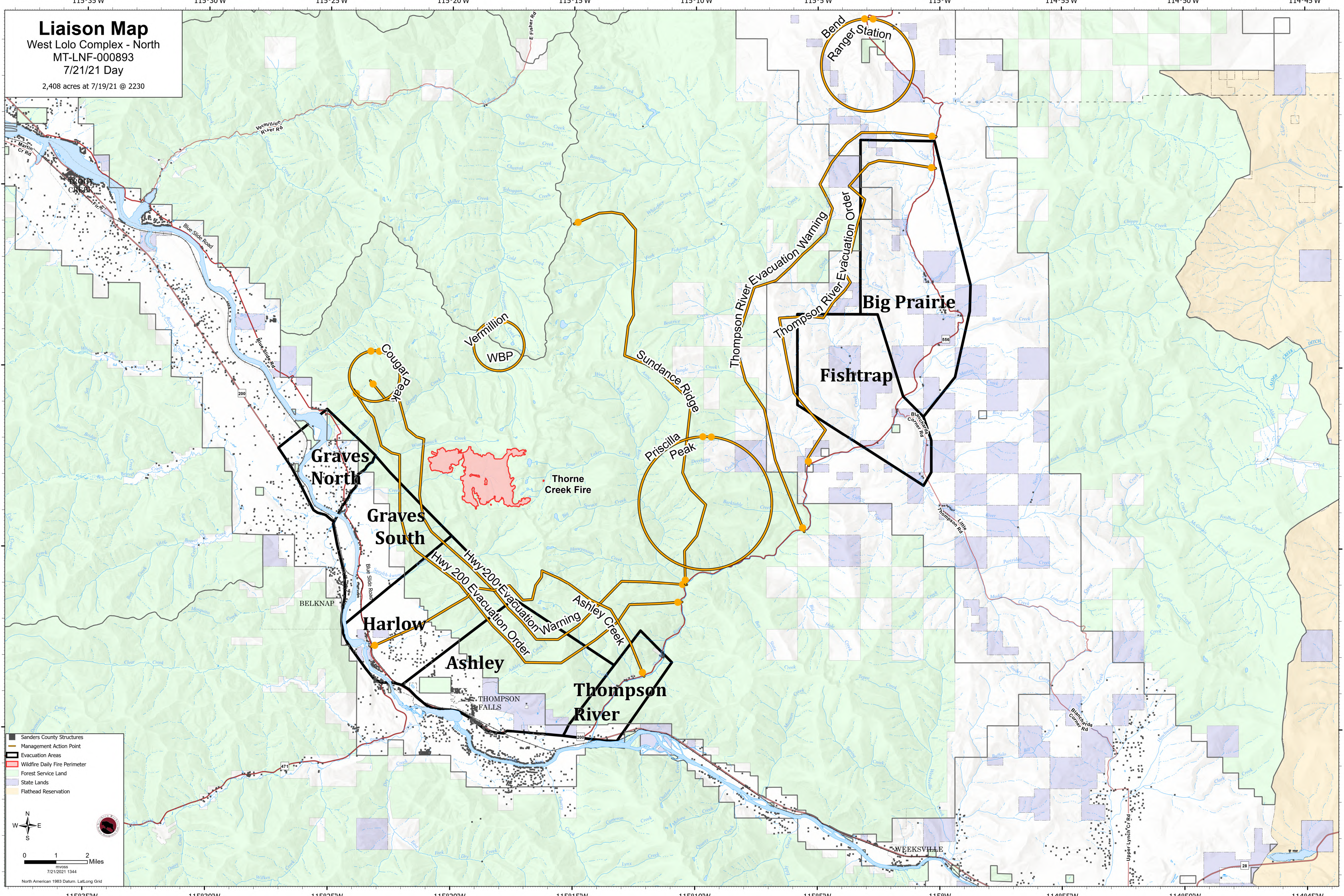


Liaison Map

West Lolo Complex - North
MT-LNF-000893
7/21/21 Day
2,408 acres at 7/19/21 @ 2230



47°50'N
47°45'N
47°40'N
47°35'N

47°50'N
47°45'N
47°40'N
47°35'N

115°35'W 115°30'W 115°25'W 115°20'W 115°15'W 115°10'W 115°5'W 115°W 114°55'W 114°50'W 114°45'W

Legend

- Sanders County Structures
- Management Action Point
- Evacuation Areas
- Wildfire Daily Fire Perimeter
- Forest Service Land
- State Lands
- Flathead Reservation

North Arrow

Scale: 0 1 2 Miles

mvoss
7/21/2021 1344

North American 1983 Datum, Lat/Long Grid