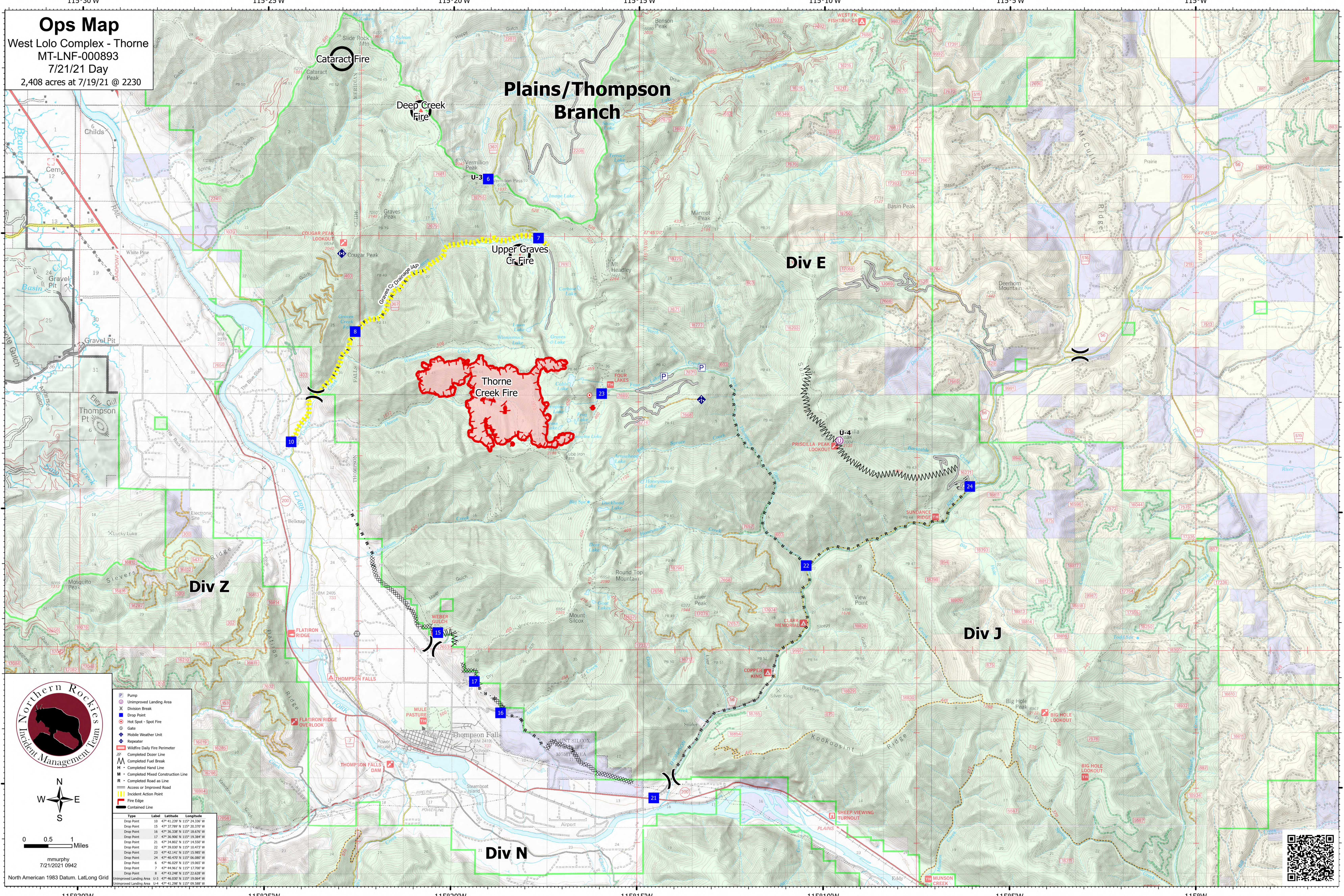


Ops Map
 West Lolo Complex - Thorne
 MT-LNF-000893
 7/21/21 Day
 2,408 acres at 7/19/21 @ 2230



Plains/Thompson Branch

Thorne Creek Fire

Upper Graves Cr. Fire

Div E

Div Z

Div J

Div N



mmurphy
 7/21/2021 0942
 North American 1983 Datum, LatLong Grid

- Pump
- Unimproved Landing Area
- Division Break
- Drop Point
- Hot Spot - Spot Fire
- Gate
- Mobile Weather Unit
- Repeater
- Wildfire Daily Fire Perimeter
- Completed Doser Line
- Completed Fuel Break
- Completed Hand Line
- Completed Mixed Construction Line
- Completed Road as Line
- Access or Improved Road
- Incident Action Point
- Fire Edge
- Contained Line

Type	Label	Latitude	Longitude
Drop Point	10	47° 41.237' N	115° 24.336' W
Drop Point	15	47° 37.706' N	115° 20.730' W
Drop Point	16	47° 36.338' N	115° 18.676' W
Drop Point	17	47° 36.906' N	115° 19.384' W
Drop Point	21	47° 34.852' N	115° 14.550' W
Drop Point	22	47° 39.802' N	115° 18.472' W
Drop Point	23	47° 42.141' N	115° 15.985' W
Drop Point	24	47° 40.470' N	115° 06.880' W
Drop Point	6	47° 46.020' N	115° 19.665' W
Drop Point	7	47° 44.961' N	115° 17.700' W
Drop Point	8	47° 43.248' N	115° 22.628' W
Unimproved Landing Area	U-3	47° 46.020' N	115° 19.664' W
Unimproved Landing Area	U-4	47° 41.236' N	115° 09.588' W

