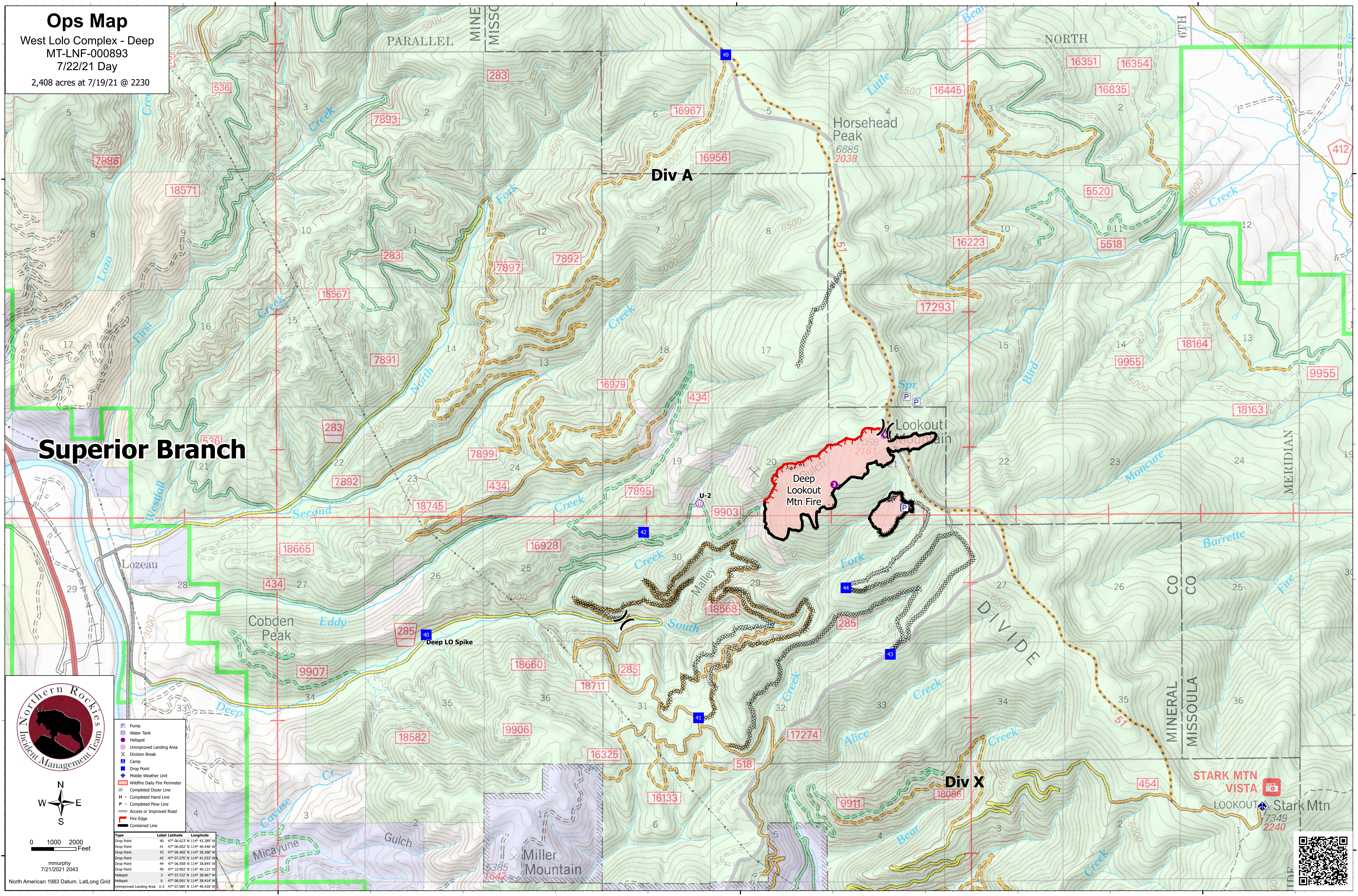


# Ops Map

West Lolo Complex - Deep  
MT-LNF-000893  
7/22/21 Day  
2,408 acres at 7/19/21 @ 2230



## Superior Branch

### Div A

### Div X

Deep Lookout Mtn Fire

STARK MTN VISTA

LOOKOUT Stark Mtn



0 1000 2000 Feet

mmurphy  
7/21/2021 2043  
North American 1983 Datum, LatLong Grid

- Pump
- Water Tank
- Helispot
- Unimproved Landing Area
- Division Break
- Camp
- Drop Point
- Mobile Weather Unit
- Wildfire Daily Fire Perimeter
- Completed Dozer Line
- Completed Hand Line
- Completed Plow Line
- Access or Improved Road
- Fire Edge
- Contained Line

Type	Label	Latitude	Longitude
Drop Point	40	47° 06.623' N	114° 43.389' W
Drop Point	41	47° 06.002' N	114° 40.446' W
Drop Point	43	47° 06.468' N	114° 38.569' W
Drop Point	42	47° 07.375' N	114° 41.033' W
Drop Point	44	47° 06.958' N	114° 38.845' W
Drop Point	49	47° 10.902' N	114° 40.121' W
Helispot	3	47° 07.722' N	114° 38.967' W
Helispot	45	47° 06.991' N	114° 38.414' W
Unimproved Landing Area	U-2	47° 07.585' N	114° 40.426' W

