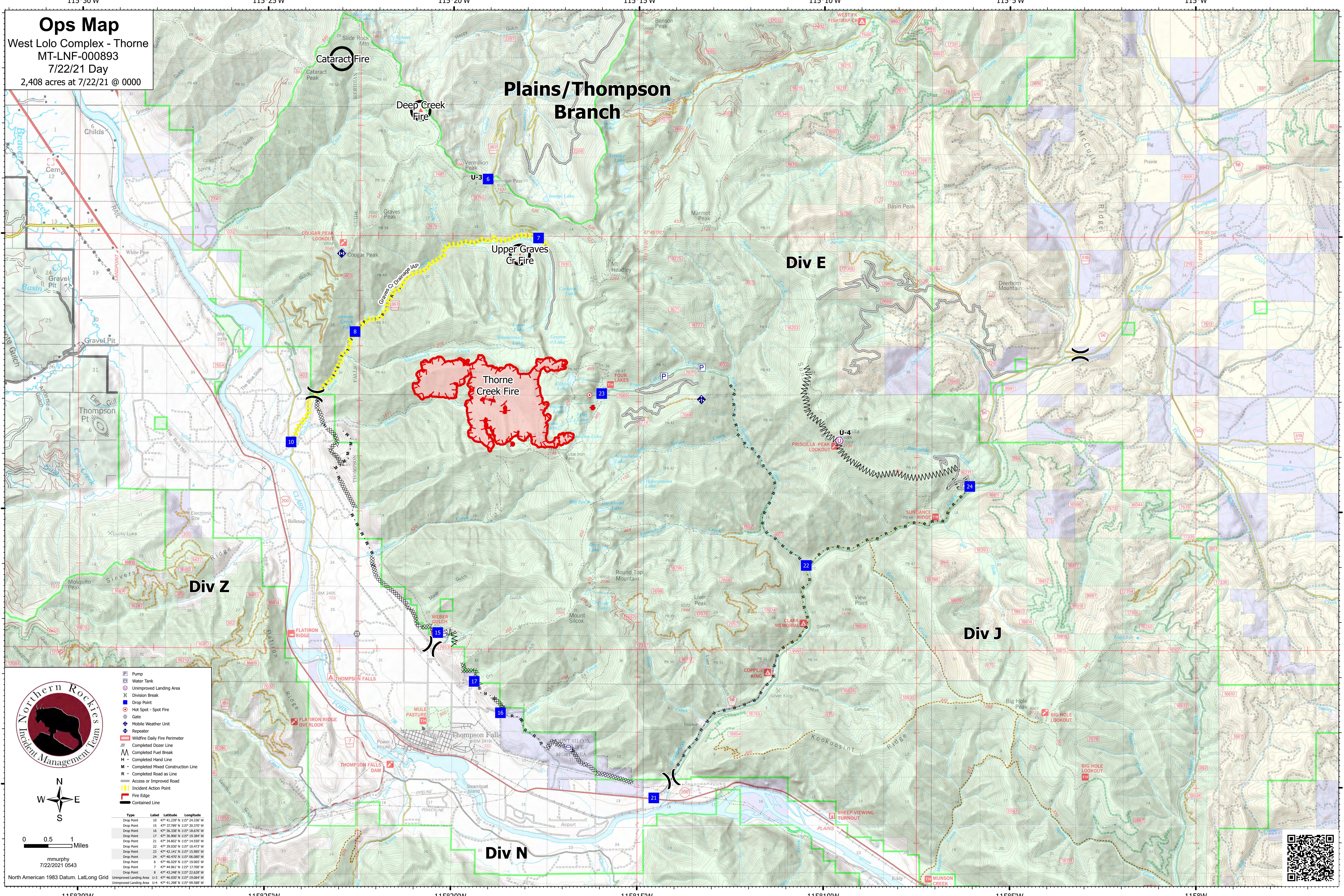


**Ops Map**  
 West Lolo Complex - Thorne  
 MT-LNF-000893  
 7/22/21 Day  
 2,408 acres at 7/22/21 @ 0000



0 0.5 1 Miles

mmurphy  
7/22/2021 0543

North American 1983 Datum, Lat/Long Grid

- Pump
- Water Tank
- Unimproved Landing Area
- Division Break
- Drop Point
- Hot Spot - Spot Fire
- Gate
- Mobile Weather Unit
- Repeater
- Wildfire Daily Fire Perimeter
- Completed Dozer Line
- Completed Fuel Break
- Completed Hand Line
- Completed Mixed Construction Line
- Completed Road as Line
- Access or Improved Road
- Incident Action Point
- Fire Edge
- Contained Line

Type	Label	Latitude	Longitude
Drop Point	15	47° 41.238' N	115° 24.338' W
Drop Point	16	47° 36.789' N	115° 20.370' W
Drop Point	17	47° 36.338' N	115° 18.676' W
Drop Point	21	47° 34.802' N	115° 14.507' W
Drop Point	22	47° 39.030' N	115° 10.473' W
Drop Point	23	47° 42.141' N	115° 15.985' W
Drop Point	24	47° 40.470' N	115° 06.080' W
Drop Point	6	47° 46.029' N	115° 19.062' W
Drop Point	7	47° 44.961' N	115° 17.700' W
Drop Point	8	47° 43.248' N	115° 22.628' W
Unimproved Landing Area	U-3	47° 46.029' N	115° 19.062' W
Unimproved Landing Area	U-4	47° 41.238' N	115° 24.338' W

