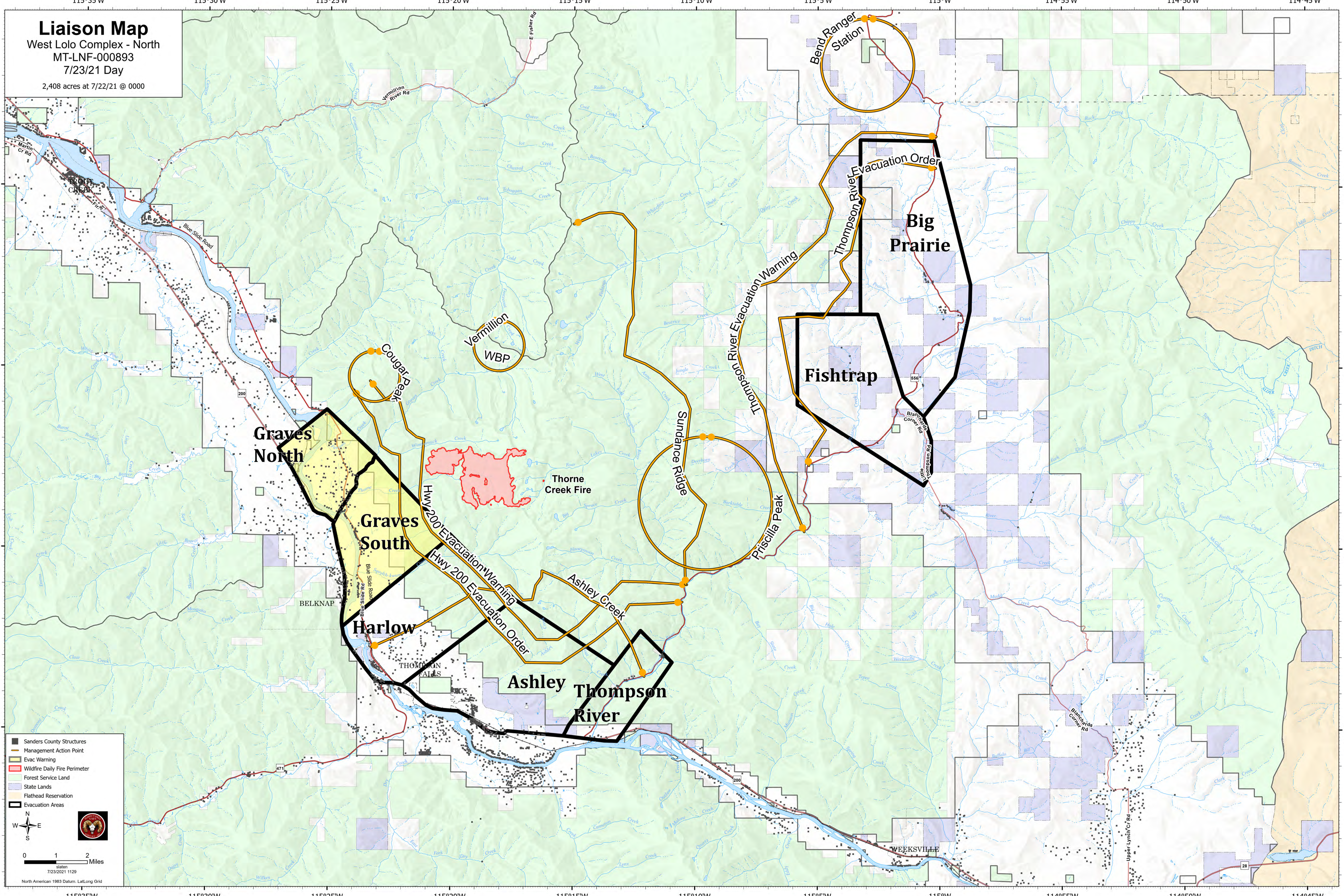


Liaison Map

West Lolo Complex - North
MT-LNF-000893
7/23/21 Day
2,408 acres at 7/22/21 @ 0000



- Sanders County Structures
- Management Action Point
- Evac Warning
- Wildfire Daily Fire Perimeter
- Forest Service Land
- State Lands
- Flathead Reservation
- Evacuation Areas

115°35'W 115°30'W 115°25'W 115°20'W 115°15'W 115°10'W 115°5'W 115°W 114°55'W 114°50'W 114°45'W

47°50'N
47°45'N
47°40'N
47°35'N

47°50'N
47°45'N
47°40'N
47°35'N