

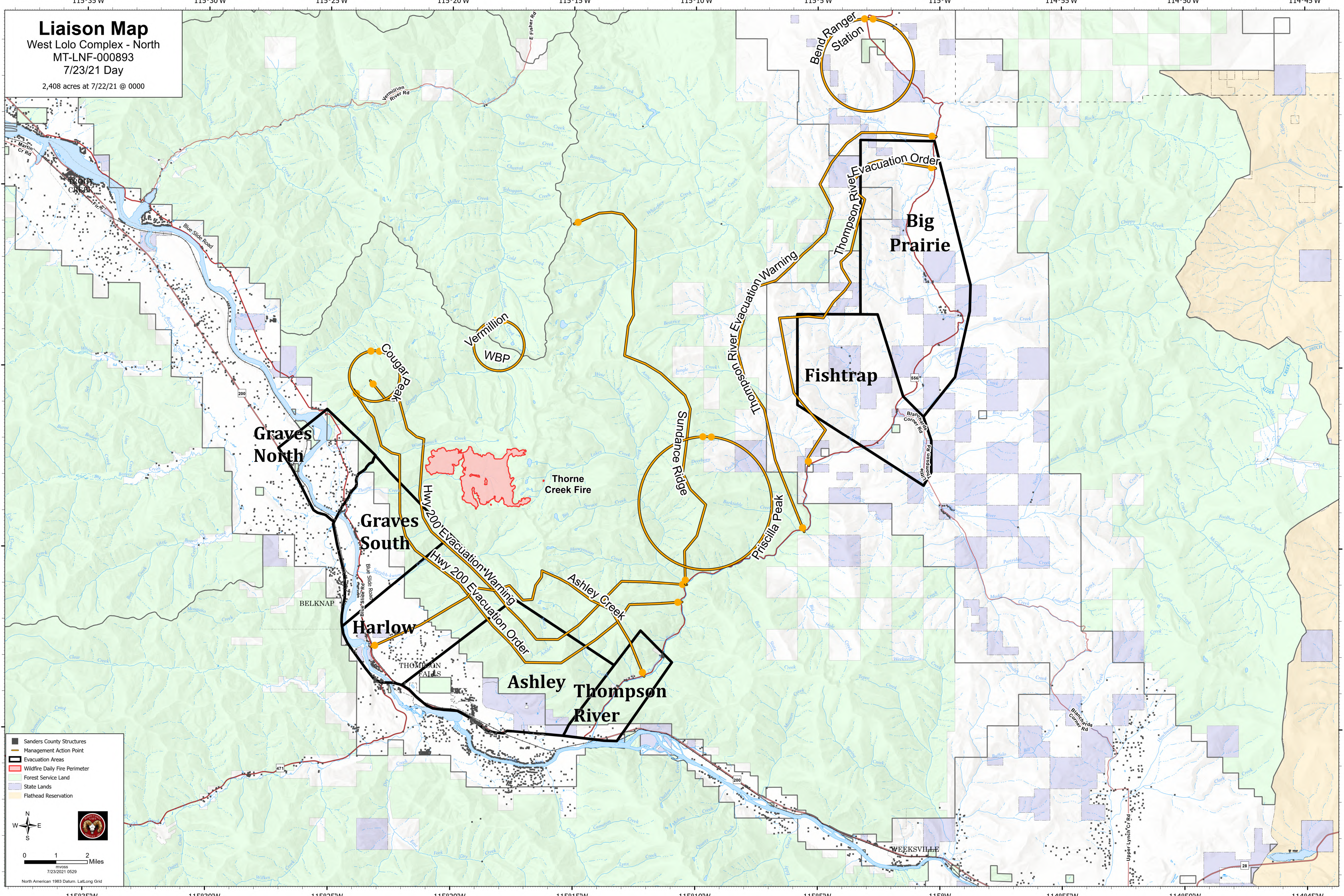
Liaison Map

West Lolo Complex - North

MT-LNF-000893

7/23/21 Day

2,408 acres at 7/22/21 @ 0000



- Sanders County Structures
- Management Action Point
- Evacuation Areas
- Wildfire Daily Fire Perimeter
- Forest Service Land
- State Lands
- Flathead Reservation

0 1 2 Miles
mvoss
7/23/2021 0529
North American 1983 Datum, Lat/Long Grid