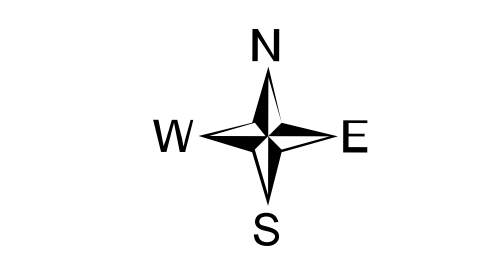
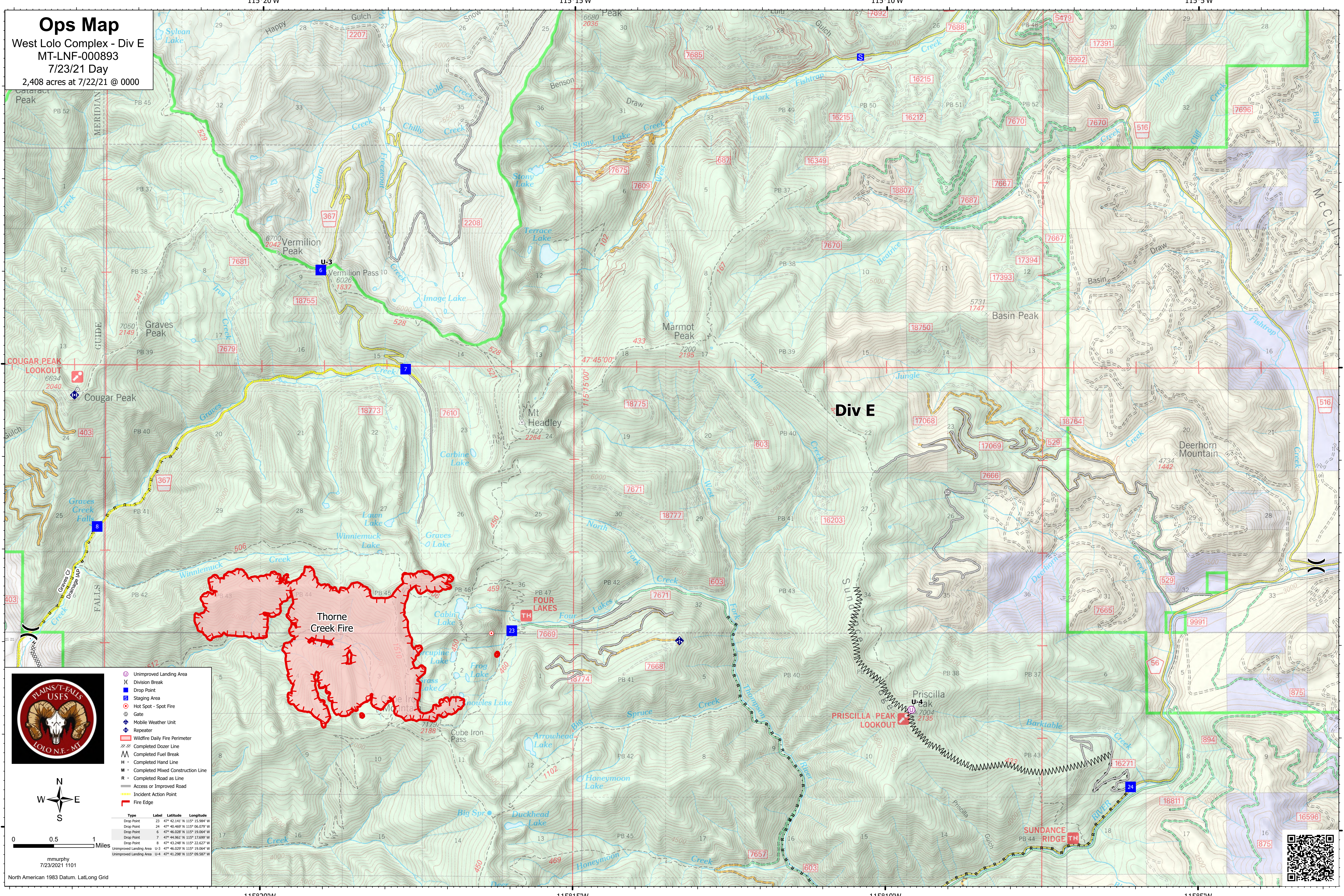


Ops Map

West Lolo Complex - Div E
MT-LNF-000893
7/23/21 Day
2,408 acres at 7/22/21 @ 0000



- Unimproved Landing Area
 -) Division Break
 - Drop Point
 - Staging Area
 - Hot Spot - Spot Fire
 - Gate
 - ◆ Mobile Weather Unit
 - ◆ Repeater
 - ▭ Wildfire Daily Fire Perimeter
 - ⊗ Completed Dozer Line
 - ⊗ Completed Fuel Break
 - ⊗ Completed Hand Line
 - ⊗ Completed Mixed Construction Line
 - ⊗ Completed Road as Line
 - Access or Improved Road
 - ⊗ Incident Action Point
 - ▭ Fire Edge
- | Type | Label | Latitude | Longitude |
|-------------------------|-------|---------------|----------------|
| Drop Point | 23 | 47° 42.141' N | 115° 15.984' W |
| Drop Point | 24 | 47° 42.469' N | 115° 16.079' W |
| Drop Point | 6 | 47° 46.028' N | 115° 19.064' W |
| Drop Point | 7 | 47° 44.961' N | 115° 17.699' W |
| Drop Point | 8 | 47° 43.288' N | 115° 22.627' W |
| Unimproved Landing Area | U-3 | 47° 46.029' N | 115° 19.064' W |
| Unimproved Landing Area | U-4 | 47° 41.298' N | 115° 09.587' W |

