
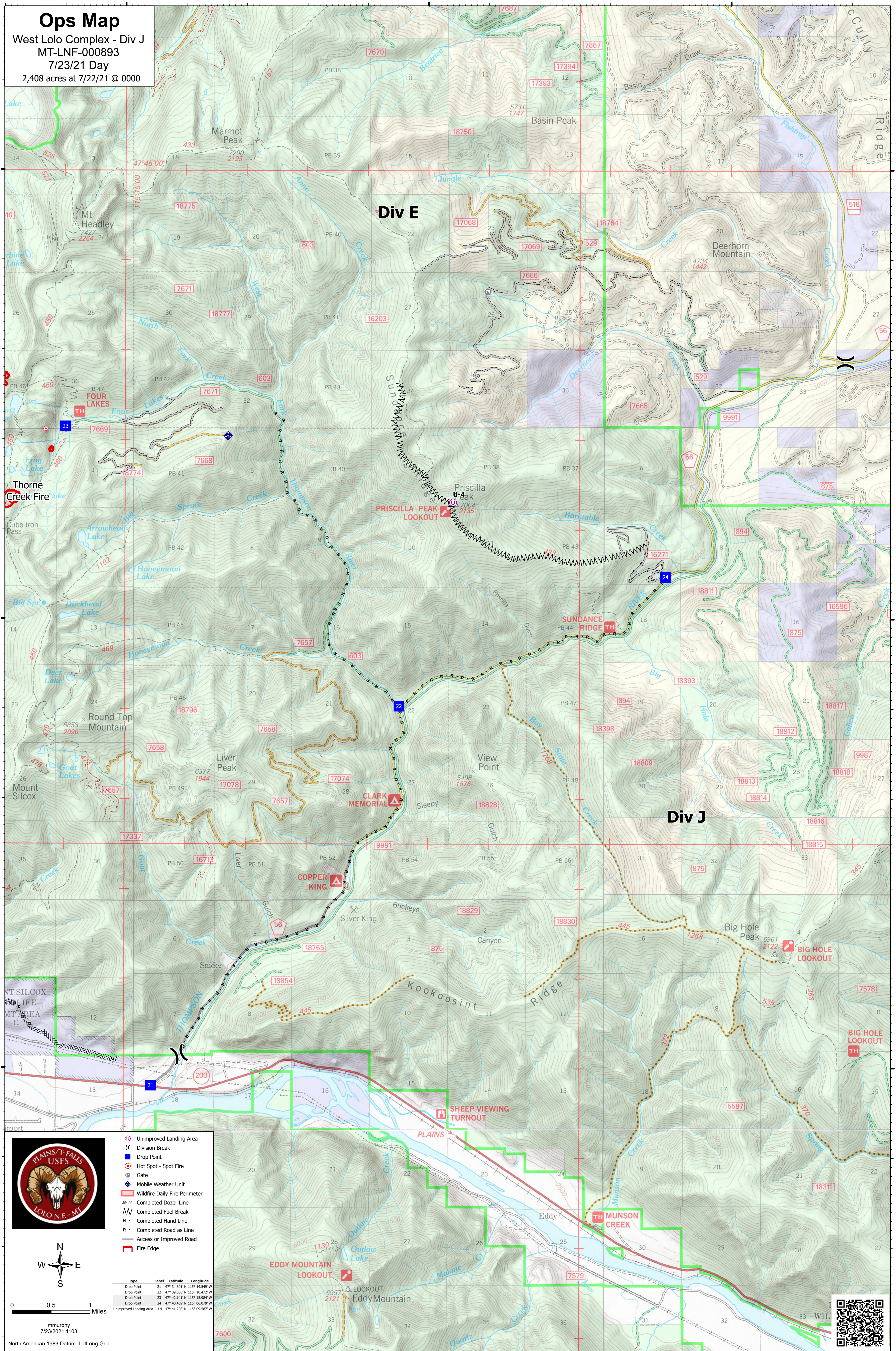


Ops Map

West Lolo Complex - Div J
MT-LNF-000893
7/23/21 Day
2,408 acres at 7/22/21 @ 0000



- Unimproved Landing Area
- Division Break
- Drop Point
- Hot Spot - Spot Fire
- Gate
- Mobile Weather Unit
- Wildfire Daily Fire Perimeter
- Completed Dozer Line
- Completed Fuel Break
- Completed Hand Line
- Completed Road as Line
- Access or Improved Road
- Fire Edge

Type	Label	Latitude	Longitude
Drop Point	21	47° 34.801' N	115° 14.549' W
Drop Point	22	47° 34.828' N	115° 14.472' W
Drop Point	23	47° 42.141' N	115° 15.984' W
Drop Point	24	47° 40.469' N	115° 06.079' W
Unimproved Landing Area	U-4	47° 41.298' N	115° 09.587' W

mmurphy
7/23/2021 1103
North American 1983 Datum, LatLong Grid

