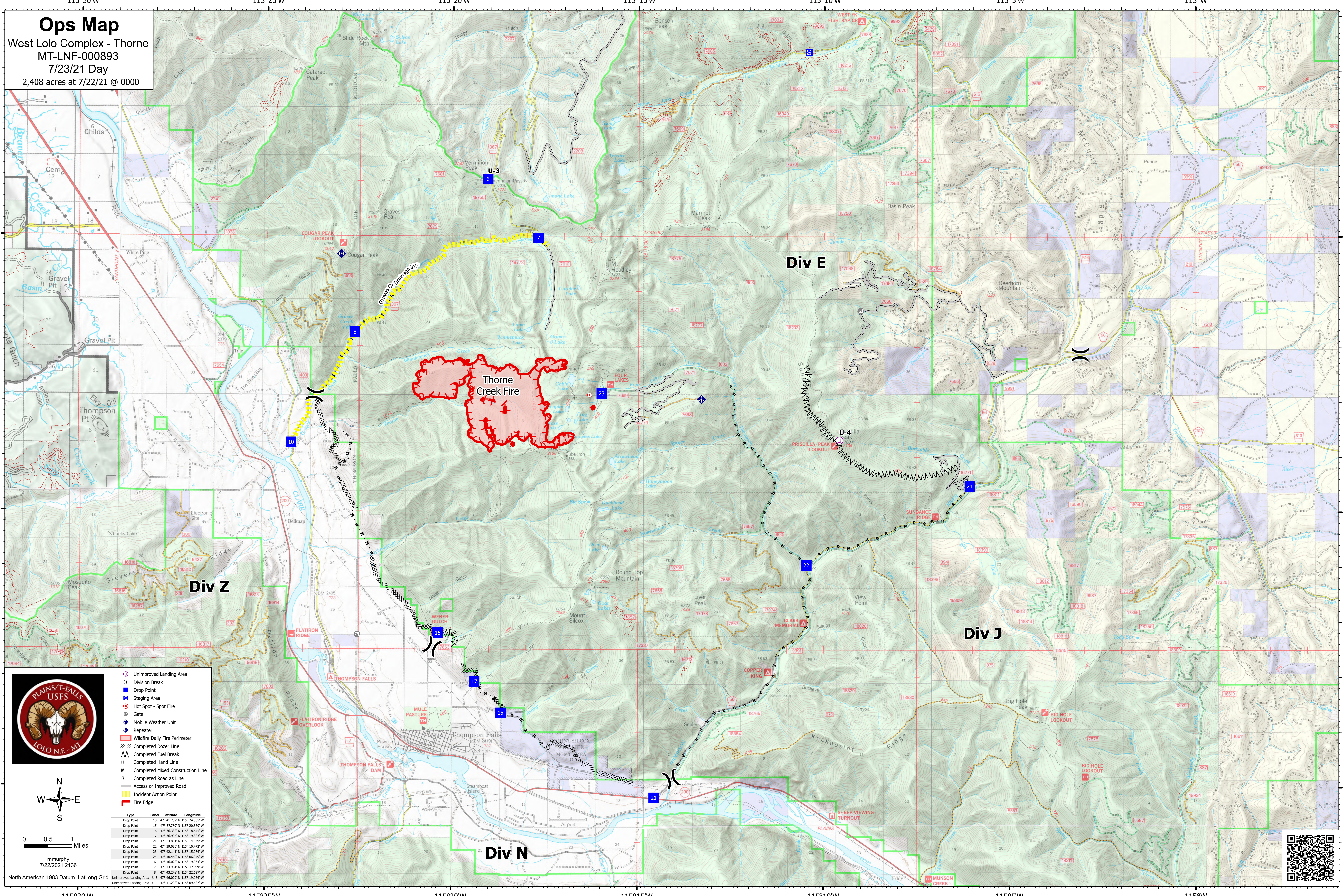



Ops Map
 West Lolo Complex - Thorne
 MT-LNF-000893
 7/23/21 Day
 2,408 acres at 7/22/21 @ 0000

(O) Unimproved Landing Area
 (X) Division Break
 (D) Drop Point
 (S) Staging Area
 (H) Hot Spot - Spot Fire
 (G) Gate
 (M) Mobile Weather Unit
 (R) Repeater
 (W) Wildfire Daily Fire Perimeter
 (C) Completed Dozer Line
 (F) Completed Fuel Break
 (H) Completed Hand Line
 (M) Completed Mixed Construction Line
 (R) Completed Road as Line
 (A) Access or Improved Road
 (I) Incident Action Point
 (E) Fire Edge

Type	Label	Latitude	Longitude
Drop Point	10	47° 41.238' N	115° 24.338' W
Drop Point	15	47° 32.789' N	115° 20.369' W
Drop Point	16	47° 36.338' N	115° 18.675' W
Drop Point	17	47° 36.900' N	115° 19.383' W
Drop Point	21	47° 34.800' N	115° 14.587' W
Drop Point	22	47° 39.030' N	115° 10.472' W
Drop Point	23	47° 42.141' N	115° 15.984' W
Drop Point	24	47° 40.469' N	115° 06.079' W
Drop Point	6	47° 46.028' N	115° 19.054' W
Drop Point	7	47° 44.961' N	115° 17.699' W
Drop Point	8	47° 43.248' N	115° 22.627' W
Unimproved Landing Area	U-3	47° 46.028' N	115° 19.054' W
Unimproved Landing Area	U-4	47° 41.258' N	115° 09.587' W

mmurphy
 7/22/2021 2136
 North American 1983 Datum, LatLong Grid

