

Liaison Map

West Lolo Complex Thorne
Creek

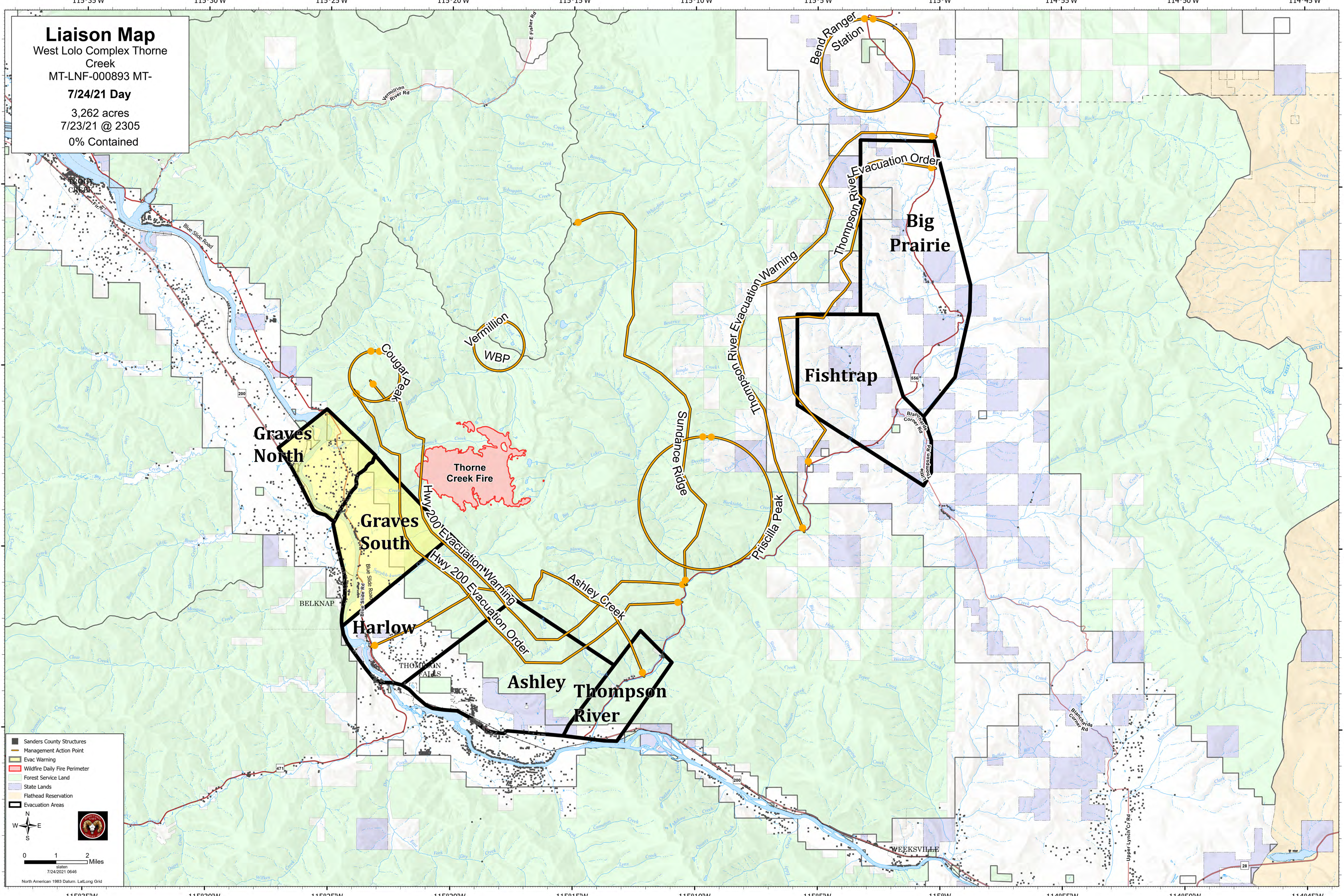
MT-LNF-000893 MT-

7/24/21 Day

3,262 acres

7/23/21 @ 2305

0% Contained



- Sanders County Structures
- Management Action Point
- Evac Warning
- Wildfire Daily Fire Perimeter
- Forest Service Land
- State Lands
- Flathead Reservation
- Evacuation Areas

0 1 2 Miles
7/24/2021 0646
North American 1983 Datum, Lat,Long Grid