

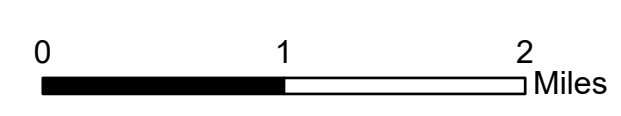
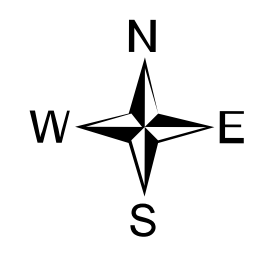
Ops Map

West Lolo Complex - Thorne
MT-LNF-000893
7/24/21 Day
3,262 acres at 7/23/21 @ 2305

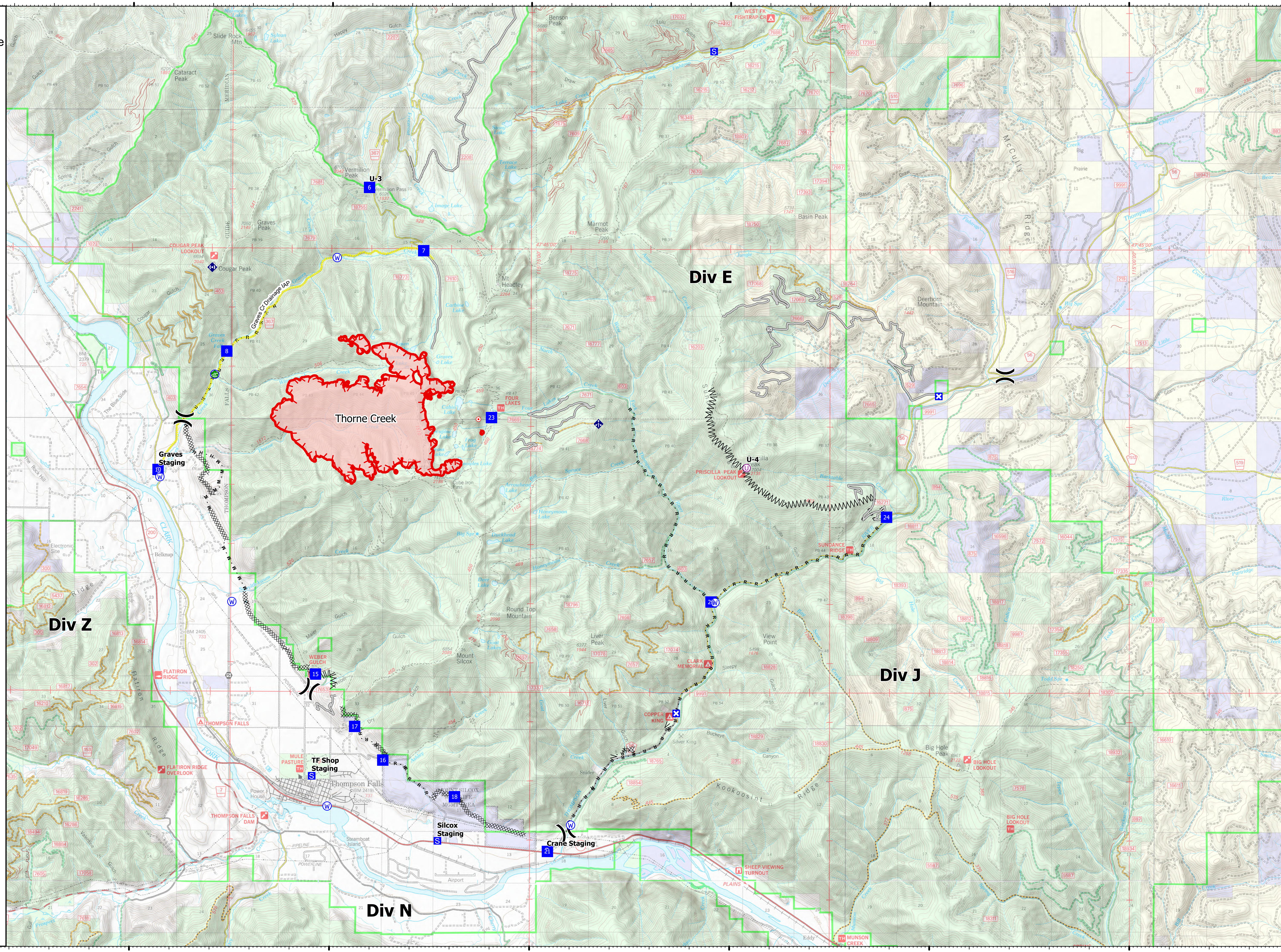


- Unimproved Landing Area
- Division Break
- Drop Point
- Closure
- Staging Area
- Hot Spot - Spot Fire
- Gate
- Water Development or Draft Site
- Mobile Weather Unit
- Repeater
- Water Source
- Wildfire Daily Fire Perimeter
- Completed Dozer Line
- Completed Fuel Break
- Completed Hand Line
- Completed Mixed Construction Line
- Completed Road as Line
- Access or Improved Road
- Incident Action Point
- Fire Edge

Type	Label	Latitude	Longitude
Water Source		47° 41.117' N 115° 24.288' W	
Water Development or Draft Site		47° 42.859' N 115° 22.925' W	
Water Source		47° 44.839' N 115° 19.867' W	
Water Source		47° 42.855' N 115° 22.925' W	
Water Source		47° 35.247' N 115° 13.972' W	
Water Source		47° 39.021' N 115° 10.373' W	
Water Source		47° 35.556' N 115° 20.064' W	
Water Source		47° 39.009' N 115° 22.471' W	
Drop Point	10	47° 41.239' N 115° 24.335' W	
Drop Point	15	47° 37.789' N 115° 20.369' W	
Drop Point	16	47° 36.338' N 115° 18.675' W	
Drop Point	17	47° 36.905' N 115° 19.383' W	
Drop Point	18	47° 35.722' N 115° 16.879' W	
Drop Point	21	47° 34.801' N 115° 14.549' W	
Drop Point	22	47° 39.030' N 115° 10.472' W	
Drop Point	23	47° 42.141' N 115° 15.984' W	
Drop Point	24	47° 40.469' N 115° 06.079' W	
Drop Point	6	47° 46.028' N 115° 19.064' W	
Drop Point	7	47° 44.961' N 115° 17.699' W	
Drop Point	8	47° 43.248' N 115° 22.627' W	
Unimproved Landing Area	U-3	47° 46.029' N 115° 19.064' W	
Unimproved Landing Area	U-4	47° 41.238' N 115° 09.587' W	



mmurphy
7/24/2021 0617
North American 1983 Datum, LatLong Grid



47°45'N

47°40'N

47°35'N

47°45'N

47°40'N

47°35'N

115°30'W

115°25'W

115°20'W

115°15'W

115°10'W

115°5'W

115°W