

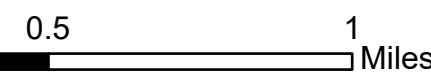
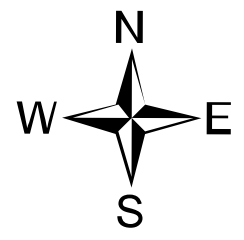
# Ops Map

West Lolo Complex - Div N  
 MT-LNF-000893  
 7/25/21 Day  
 4,560 acres at 7/24/21 @ 2000

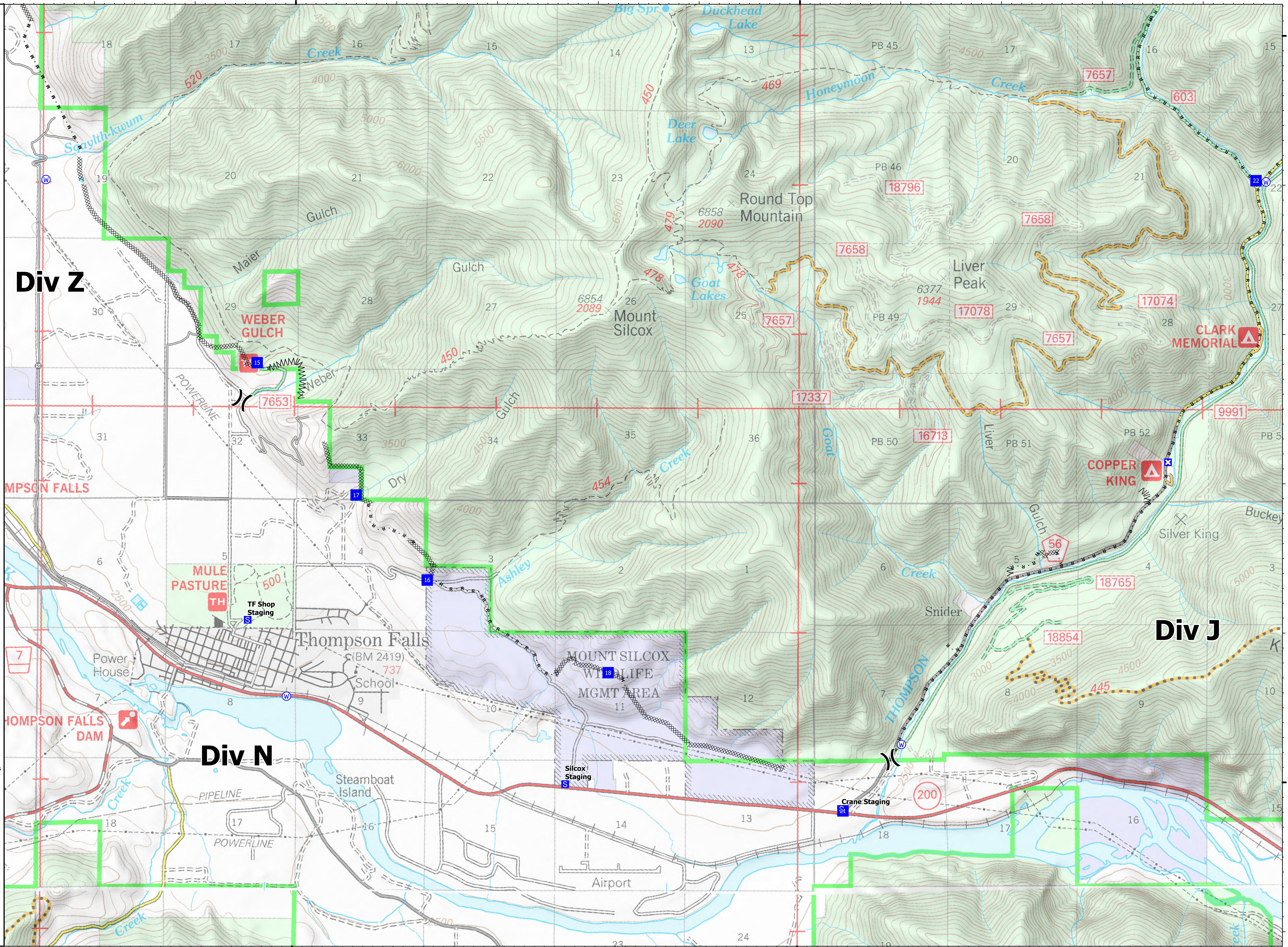


- (X) Division Break
- Drop Point
- ⊠ Closure
- ⊡ Staging Area
- ⊙ Gate
- ⊕ Water Source
- Completed Dozer Line
- - - Completed Fuel Break
- · - Completed Hand Line
- · - Completed Mixed Construction Line
- · - Completed Road as Line
- Access or Improved Road

Type	Label	Latitude	Longitude
Water Source		47° 35.247' N 115° 13.972' W	
Water Source		47° 39.021' N 115° 10.373' W	
Water Source		47° 35.556' N 115° 20.064' W	
Water Source		47° 39.009' N 115° 22.471' W	
Drop Point	15	47° 37.789' N 115° 20.369' W	
Drop Point	16	47° 36.338' N 115° 18.675' W	
Drop Point	17	47° 36.905' N 115° 19.383' W	
Drop Point	18	47° 35.722' N 115° 16.879' W	
Drop Point	21	47° 34.801' N 115° 14.549' W	
Drop Point	22	47° 39.030' N 115° 10.472' W	



mmurphy  
 7/25/2021 0805  
 North American 1983 Datum, LatLong Grid



115°20'W

115°15'W