

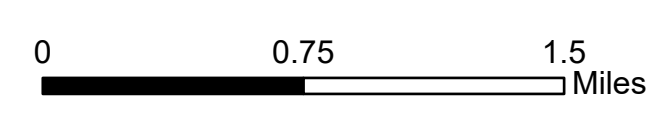
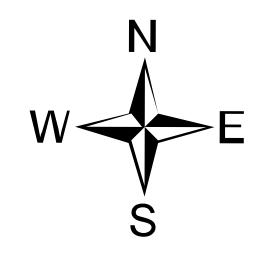
Ops Map

West Lolo Complex - Div E
 MT-LNF-000893
 7/26/21 Day
 5,627 acres at 7/26/21 @ 0700

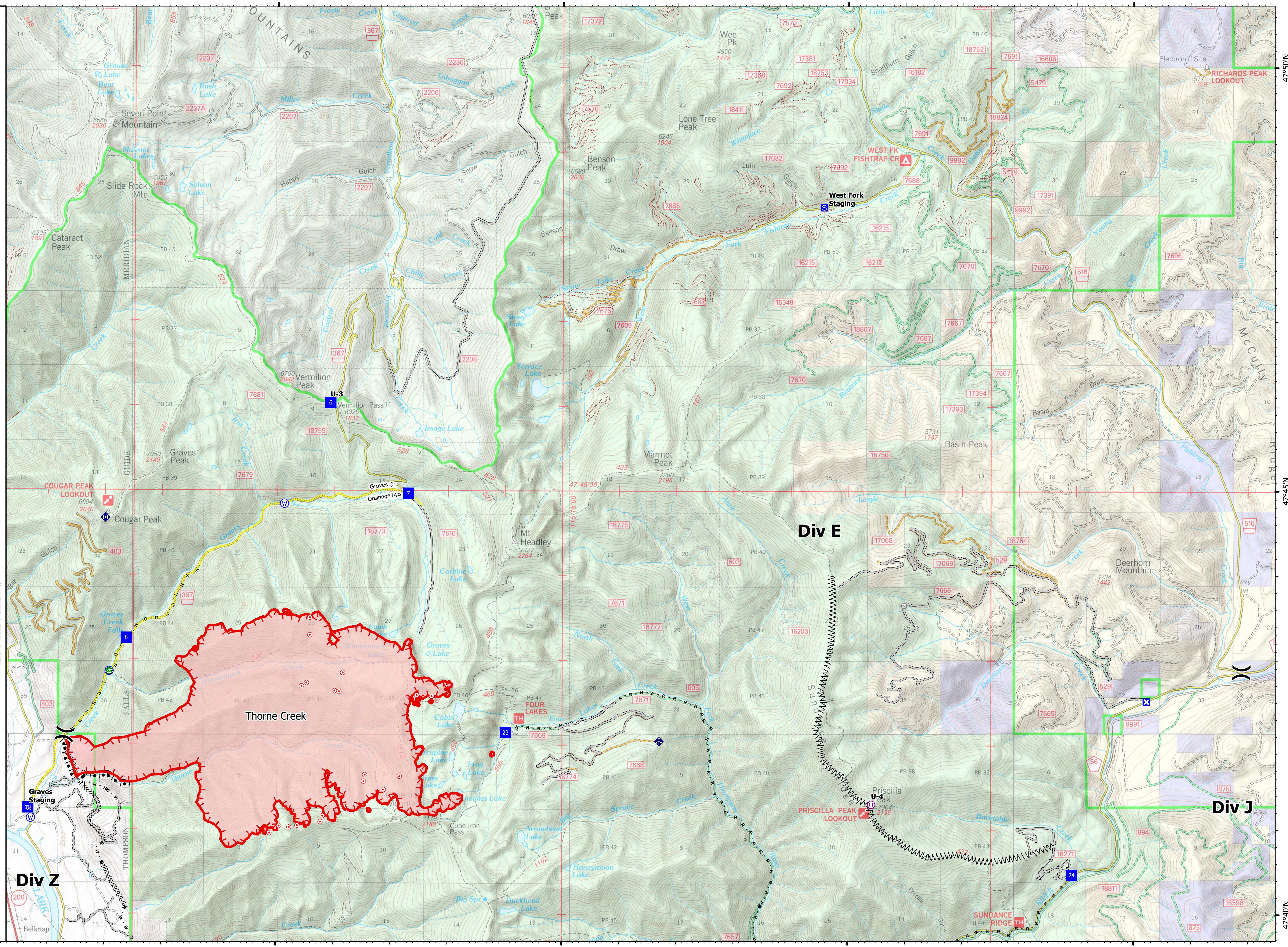


- Unimproved Landing Area
- Division Break
- Drop Point
- Closure
- Staging Area
- Hot Spot - Spot Fire
- Gate
- Water Development or Draft Site
- Mobile Weather Unit
- Repeater
- Water Source
- Completed Burnout
- Completed Dozer Line
- Completed Fuel Break
- Completed Hand Line
- Completed Mixed Construction Line
- Completed Road as Line
- Access or Improved Road
- Incident Action Point
- Fire Edge
- Wildfire Daily Fire Perimeter

Type	Label	Latitude	Longitude
Water Source		47° 41.117' N 115° 24.288' W	
Water Development or Draft Site		47° 42.859' N 115° 22.925' W	
Water Source		47° 44.839' N 115° 19.867' W	
Water Source		47° 42.855' N 115° 22.925' W	
Drop Point	10	47° 41.239' N 115° 24.335' W	
Drop Point	23	47° 42.141' N 115° 15.984' W	
Drop Point	24	47° 40.469' N 115° 06.079' W	
Drop Point	6	47° 46.028' N 115° 19.064' W	
Drop Point	7	47° 44.961' N 115° 17.699' W	
Drop Point	8	47° 43.248' N 115° 22.627' W	
Unimproved Landing Area	U-3	47° 46.029' N 115° 19.064' W	
Unimproved Landing Area	U-4	47° 41.298' N 115° 09.587' W	



mmurphy
 7/26/2021 0832
 North American 1983 Datum, Lat/Long Grid



47°50'N
 47°45'N
 47°40'N

115°25'W
 115°20'W
 115°15'W
 115°10'W
 115°5'W