

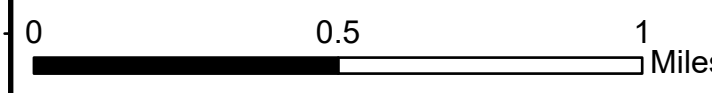
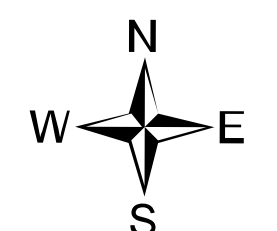
Ops Map

West Lolo Complex - Div N
 MT-LNF-000893
 7/26/21 Day
 5,627 acres at 7/26/21 @ 0700

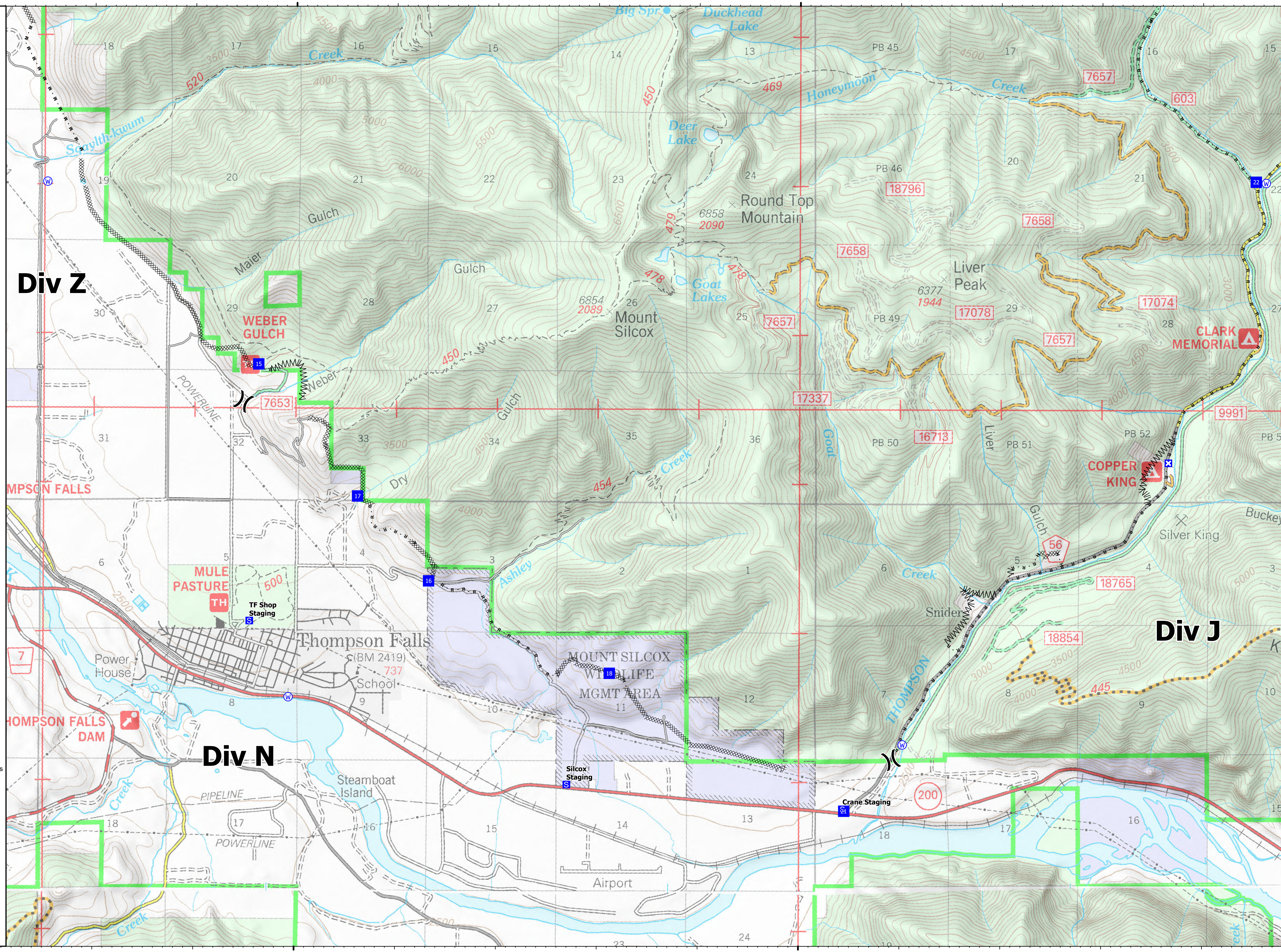


- (X) Division Break
- Drop Point
- ⊠ Closure
- ⊞ Staging Area
- ⊞ Gate
- ⊞ Water Source
- Completed Dozer Line
- Completed Fuel Break
- Completed Hand Line
- Completed Mixed Construction Line
- Completed Road as Line
- Access or Improved Road

Type	Label	Latitude	Longitude
Water Source		47° 35.247' N 115° 13.972' W	
Water Source		47° 39.021' N 115° 10.373' W	
Water Source		47° 35.556' N 115° 20.064' W	
Water Source		47° 39.009' N 115° 22.471' W	
Drop Point	15	47° 37.789' N 115° 20.369' W	
Drop Point	16	47° 36.338' N 115° 18.675' W	
Drop Point	17	47° 36.905' N 115° 19.383' W	
Drop Point	18	47° 35.722' N 115° 16.879' W	
Drop Point	21	47° 34.801' N 115° 14.549' W	
Drop Point	22	47° 39.030' N 115° 10.472' W	



mmurphy
 7/26/2021 0834
 North American 1983 Datum, LatLong Grid



Div Z

Div N

Div J

THOMPSON FALLS

THOMPSON FALLS DAM

MULE PASTURE
 TH
 TF Shop Staging
 S

Thompson Falls
 (BM 2419)
 School
 737

MOUNT SILCOX
 WILDLIFE
 MGMT AREA
 11
 Silcox Staging
 S

Airport

Crane Staging
 S

COPPER KING
 X

CLARK MEMORIAL
 A

Sawtooth-kwum
 Creek

Maier
 Gulch

WEBER
 GULCH

Weber
 Gulch

Dry
 Gulch

Ashley
 Gulch

THOMPSON
 Creek

Liver
 Gulch

Buckeye
 Creek

Round Top
 Mountain

Mount
 Silcox

Liver
 Peak

Silver King

Steamboat
 Island

115°20'W

115°15'W

47°40'N

47°40'N

47°35'N

47°35'N