

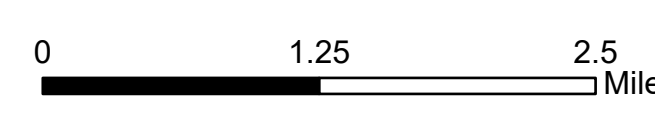
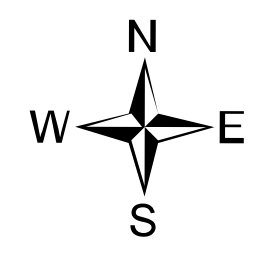
Ops Map

West Lolo Complex - Thorne
MT-LNF-000893
7/26/21 Day
7,040 acres at 7/26/21 @ 1400

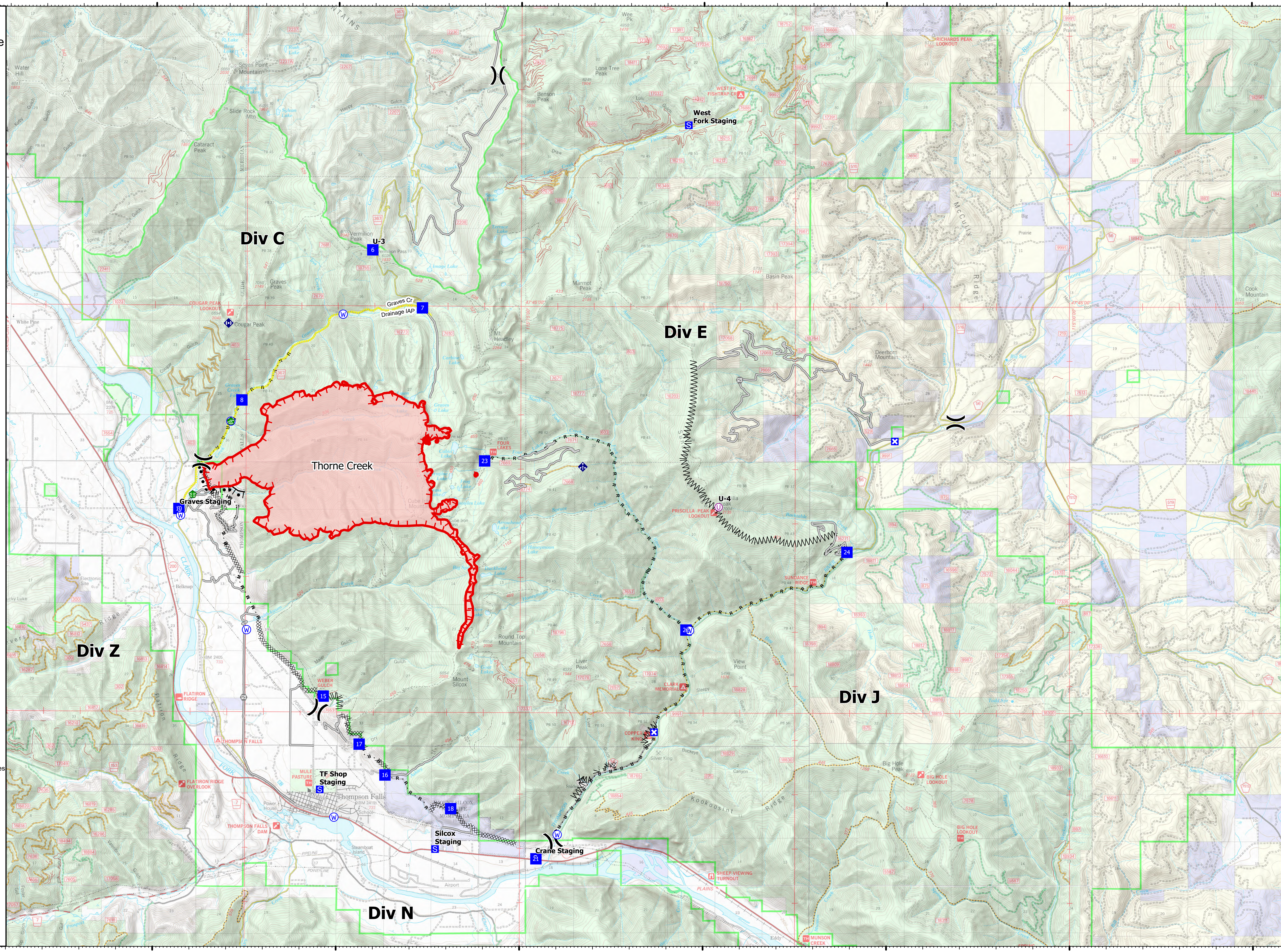


- Unimproved Landing Area
-) Division Break
- Drop Point
- ⊠ Closure
- ⊞ Staging Area
- ⊞ Gate
- ⊞ Water Development or Draft Site
- ⊞ Stream Crossing
- ⊞ Repair Point
- ⊞ Mobile Weather Unit
- ⊞ Repeater
- ⊞ Water Source
- ⊞ Completed Burnout
- ⊞ Completed Dozer Line
- ⊞ Completed Fuel Break
- ⊞ Completed Hand Line
- ⊞ Completed Mixed Construction Line
- ⊞ Completed Road as Line
- Access or Improved Road
- ⊞ Incident Action Point
- ⊞ Fire Edge
- ⊞ Wildfire Daily Fire Perimeter

Type	Label	Latitude	Longitude
Water Source	47° 41.117' N 115° 24.288' W	47° 41.117' N	115° 24.288' W
Water Development or Draft Site	47° 42.859' N 115° 22.925' W	47° 42.859' N	115° 22.925' W
Water Source	47° 44.839' N 115° 19.867' W	47° 44.839' N	115° 19.867' W
Water Source	47° 42.855' N 115° 22.925' W	47° 42.855' N	115° 22.925' W
Water Source	47° 35.247' N 115° 13.972' W	47° 35.247' N	115° 13.972' W
Water Source	47° 39.021' N 115° 10.373' W	47° 39.021' N	115° 10.373' W
Water Source	47° 35.556' N 115° 20.064' W	47° 35.556' N	115° 20.064' W
Water Source	47° 39.009' N 115° 22.471' W	47° 39.009' N	115° 22.471' W
Drop Point	10 47° 41.239' N 115° 24.335' W	47° 41.239' N	115° 24.335' W
Drop Point	15 47° 37.789' N 115° 20.369' W	47° 37.789' N	115° 20.369' W
Drop Point	16 47° 36.338' N 115° 18.675' W	47° 36.338' N	115° 18.675' W
Drop Point	17 47° 36.905' N 115° 19.383' W	47° 36.905' N	115° 19.383' W
Drop Point	18 47° 35.722' N 115° 16.879' W	47° 35.722' N	115° 16.879' W
Drop Point	21 47° 34.801' N 115° 14.549' W	47° 34.801' N	115° 14.549' W
Drop Point	22 47° 39.030' N 115° 10.472' W	47° 39.030' N	115° 10.472' W
Drop Point	23 47° 42.141' N 115° 15.984' W	47° 42.141' N	115° 15.984' W
Drop Point	24 47° 40.469' N 115° 06.079' W	47° 40.469' N	115° 06.079' W
Drop Point	6 47° 46.028' N 115° 19.064' W	47° 46.028' N	115° 19.064' W
Drop Point	7 47° 44.961' N 115° 17.699' W	47° 44.961' N	115° 17.699' W
Drop Point	8 47° 43.248' N 115° 22.627' W	47° 43.248' N	115° 22.627' W
Unimproved Landing Area	U-3 47° 46.029' N 115° 19.064' W	47° 46.029' N	115° 19.064' W
Unimproved Landing Area	U-4 47° 41.238' N 115° 09.587' W	47° 41.238' N	115° 09.587' W



mmurphy
7/26/2021 1804
North American 1983 Datum, Lat/Long Grid



47°50N

47°45N

47°40N

47°35N

47°50N

47°45N

47°40N

47°35N

115°30W

115°25W

115°20W

115°15W

115°10W

115°5W

115°W

114°55W