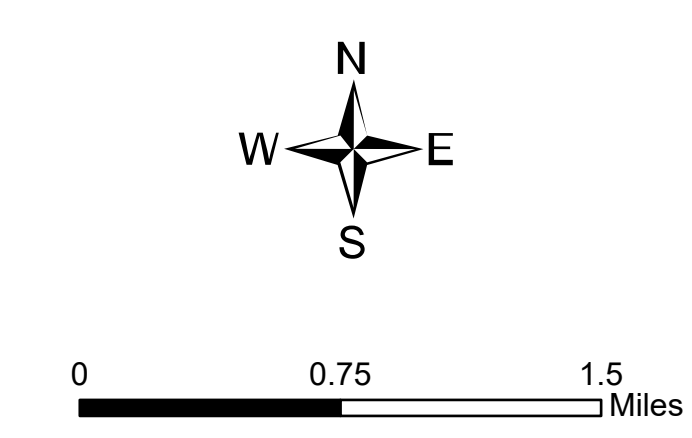


Ops Map
 West Lolo Complex - Div E
 MT-LNF-000893
 7/27/21 Day
 8,490 acres at 7/26/21 @ 2245

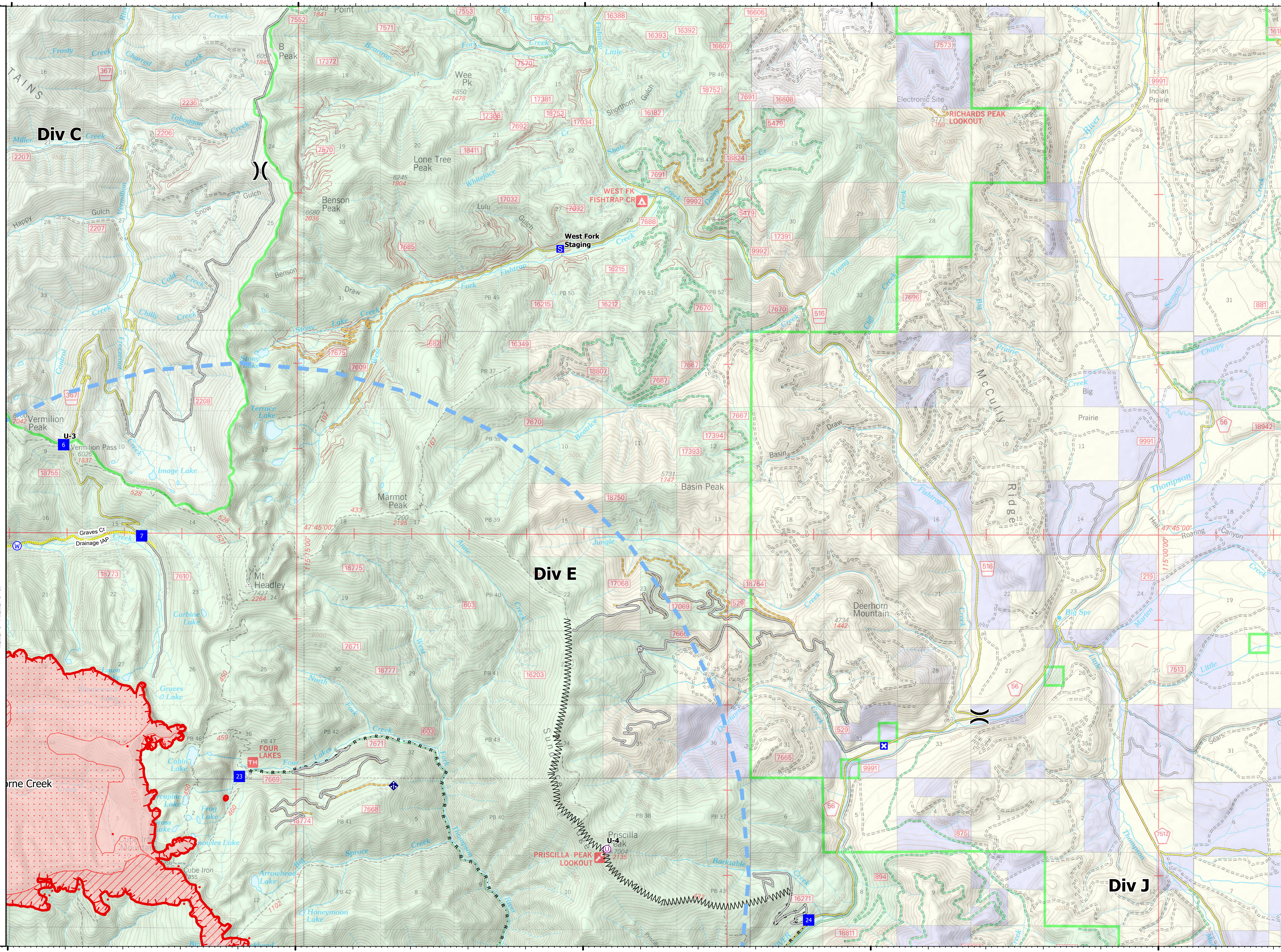


- Unimproved Landing Area
- Division Break
- Drop Point
- Closure
- Staging Area
- Gate
- Water Development or Draft Site
- Repair Point
- Mobile Weather Unit
- Water Source
- IR Isolated Heat Source
- Completed Burnout
- Completed Dozer Line
- Completed Fuel Break
- Completed Mixed Construction Line
- Completed Road as Line
- Access or Improved Road
- Incident Action Point
- Temporary Flight Restriction
- Fire Edge
- IR Heat Perimeter
- IR Intense Heat
- IR Scattered Heat
- Wildfire Daily Fire Perimeter

Type	Label	Latitude	Longitude
Water Source		47° 44.839' N	115° 19.867' W
Drop Point	23	47° 42.141' N	115° 15.984' W
Drop Point	24	47° 40.469' N	115° 06.079' W
Drop Point	6	47° 46.028' N	115° 19.064' W
Drop Point	7	47° 44.961' N	115° 17.699' W
Drop Point	8	47° 43.248' N	115° 22.627' W
Unimproved Landing Area	U-3	47° 46.029' N	115° 19.064' W
Unimproved Landing Area	U-4	47° 41.298' N	115° 09.587' W



mmurphy
 7/27/2021 0529
 North American 1983 Datum, Lat/Long Grid



115°20'W 115°15'W 115°10'W 115°5'W 115°W

47°50'N
47°45'N

47°50'N
47°45'N