

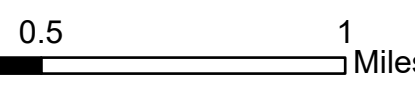
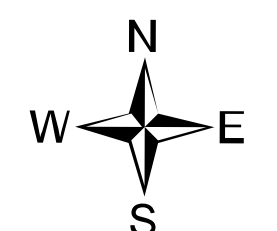
Ops Map

West Lolo Complex - Div N
 MT-LNF-000893
 7/27/21 Day
 8,490 acres at 7/26/21 @ 2245

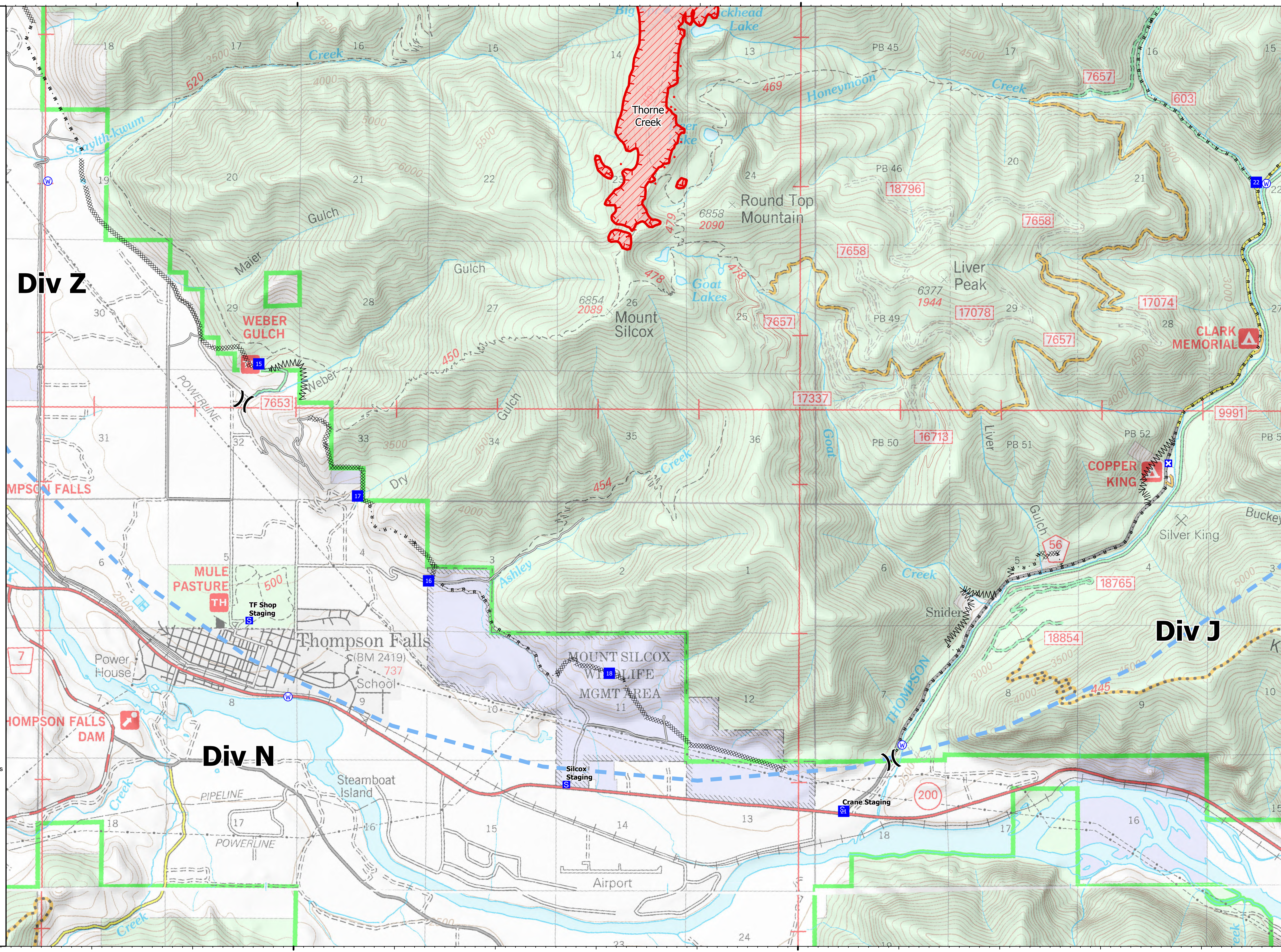


- Division Break
- Drop Point
- Closure
- Staging Area
- Gate
- Water Source
- IR Isolated Heat Source
- Completed Dozer Line
- Completed Fuel Break
- Completed Hand Line
- Completed Mixed Construction Line
- Completed Road as Line
- Access or Improved Road
- Temporary Flight Restriction
- Fire Edge
- IR Heat Perimeter
- IR Intense Heat
- Wildfire Daily Fire Perimeter

Type	Label	Latitude	Longitude
Water Source		47° 35.247' N 115° 13.972' W	
Water Source		47° 39.021' N 115° 10.373' W	
Water Source		47° 35.556' N 115° 20.064' W	
Water Source		47° 39.009' N 115° 22.471' W	
Drop Point	15	47° 37.789' N 115° 20.369' W	
Drop Point	16	47° 36.338' N 115° 18.675' W	
Drop Point	17	47° 36.905' N 115° 19.383' W	
Drop Point	18	47° 35.722' N 115° 16.879' W	
Drop Point	21	47° 34.801' N 115° 14.549' W	
Drop Point	22	47° 39.030' N 115° 10.472' W	



mmurphy
 7/27/2021 0532
 North American 1983 Datum, LatLong Grid



Div Z

WEBER GULCH

MULE PASTURE

TF Shop Staging

Thompson Falls

MOUNT SILCOX W/LIFE MGMT AREA

Div N

Div J

Thorne Creek

Round Top Mountain

Mount Silcox

Liver Peak

CLARK MEMORIAL

COPPER KING

THOMPSON FALLS

THOMPSON FALLS DAM

Steamboat Island

Airport

PIPELINE

POWERLINE

THOMPSON

Scayth-kwum Creek

Maier Gulch

Gulch

Gulch

Dry Gulch

Ashley Creek

Goat Lakes

Goat Creek

Creek

Liver Gulch

Buckey Creek

Creek

Creek

reek

115°20'W

115°15'W

47°40'N

47°40'N

47°35'N

47°35'N